

Sasha

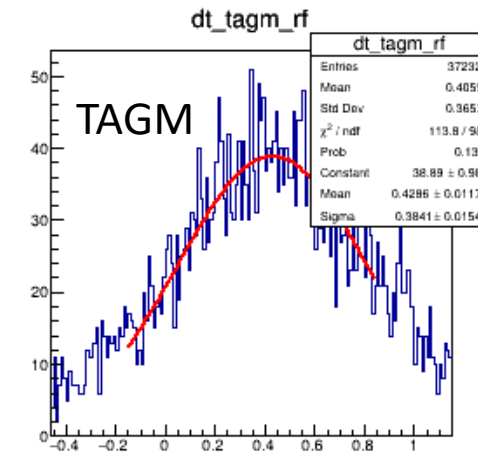
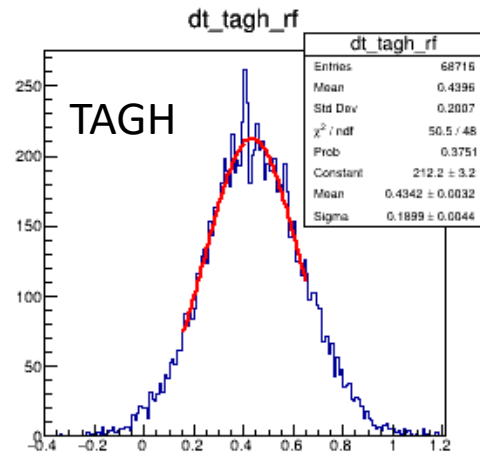
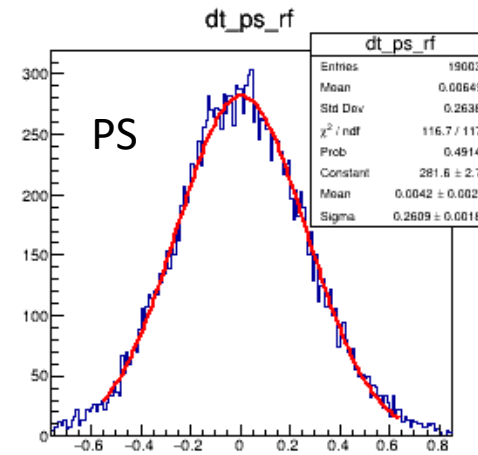
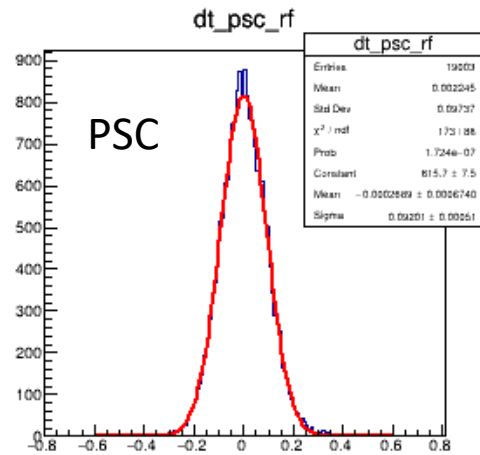
SRC meeting, 3/7/22

## Adjustment of Tagger Time

- Calibration of the RF time
- Adjustment of global TAGH timing offsets
- Time calibration of individual channels

# PS and Tagger Times

PSC FR



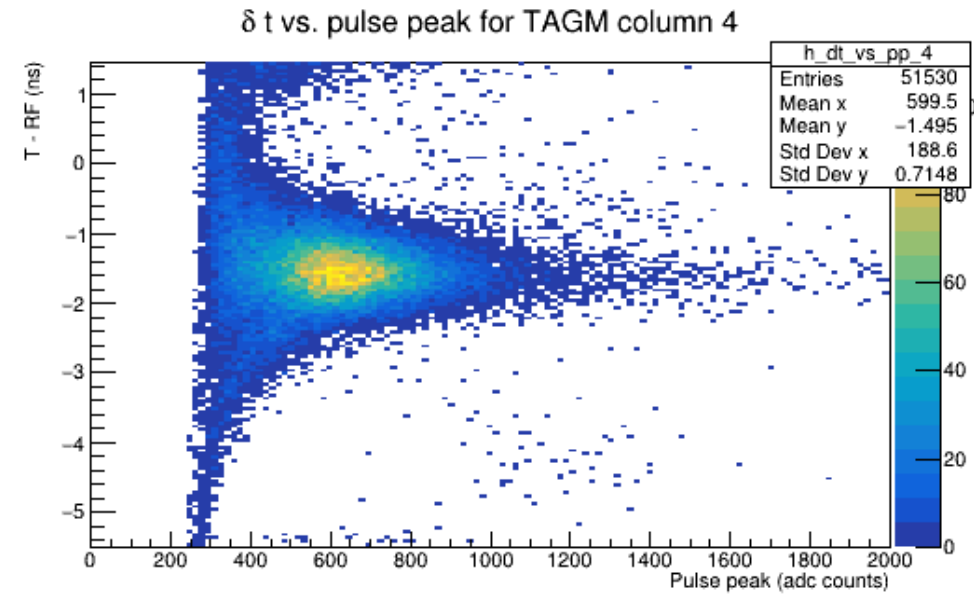
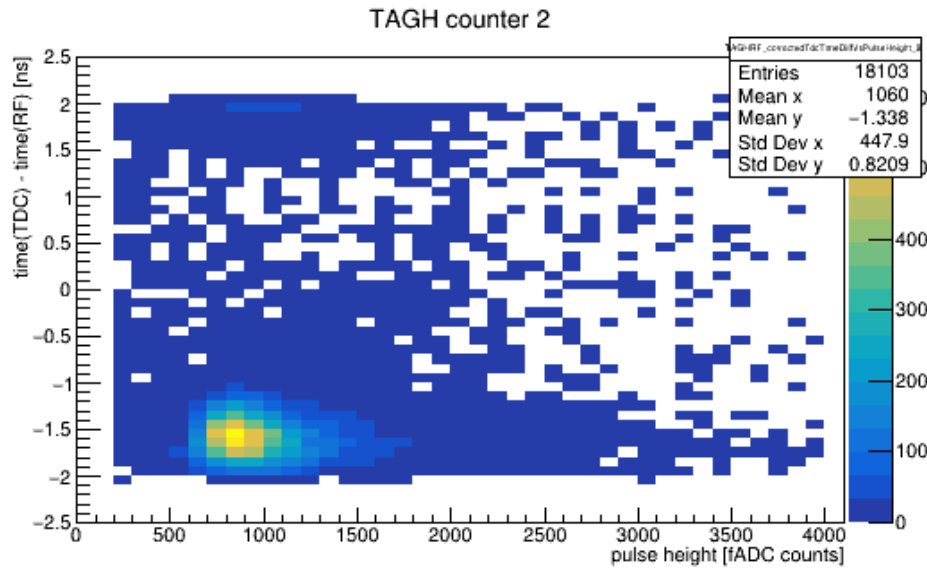
- PSC RF is used as reference
- TAGH & TAGM are shifted by 0.4 ns

TAGM after time adjustment by Bo

T (DET) - T (RF)

# Tagger Times

## TAGH FR

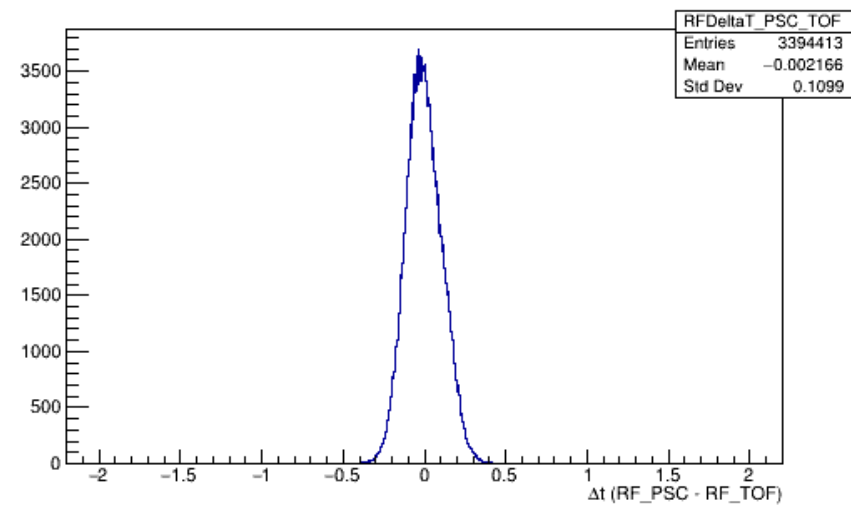
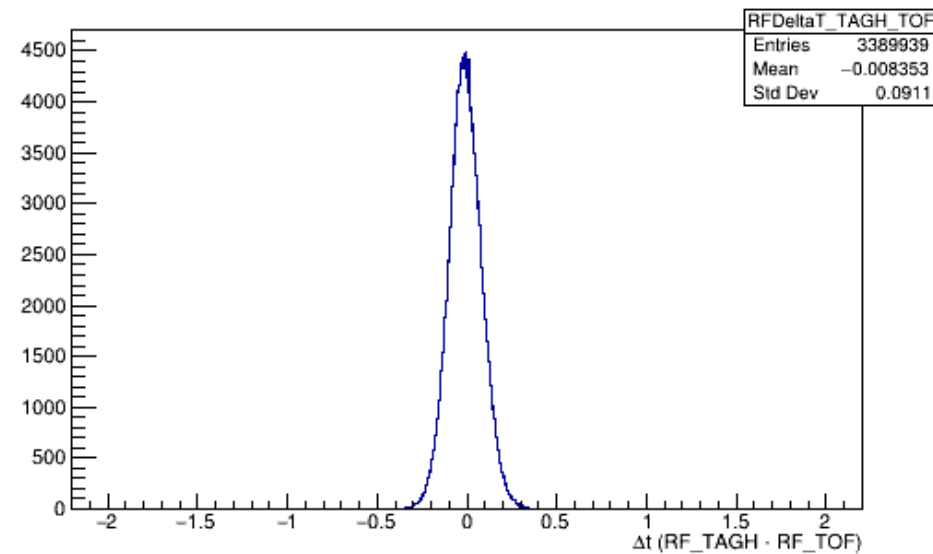
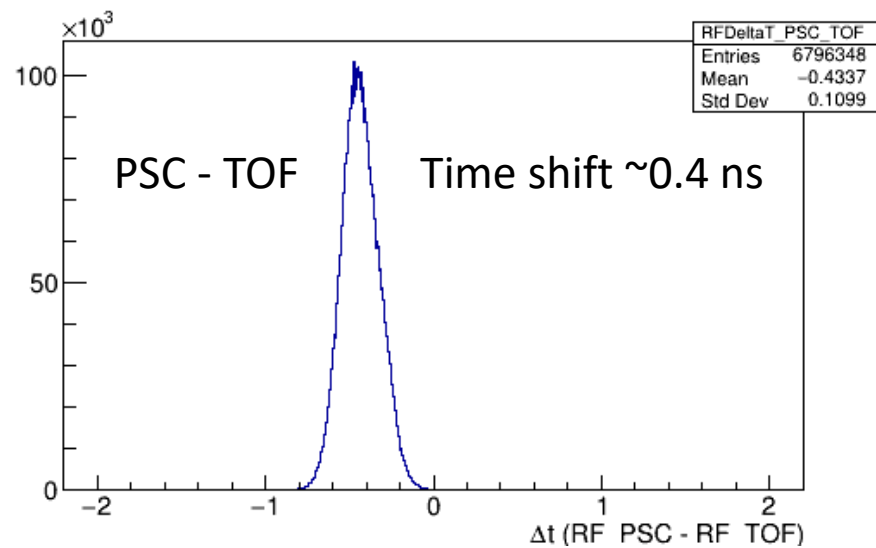
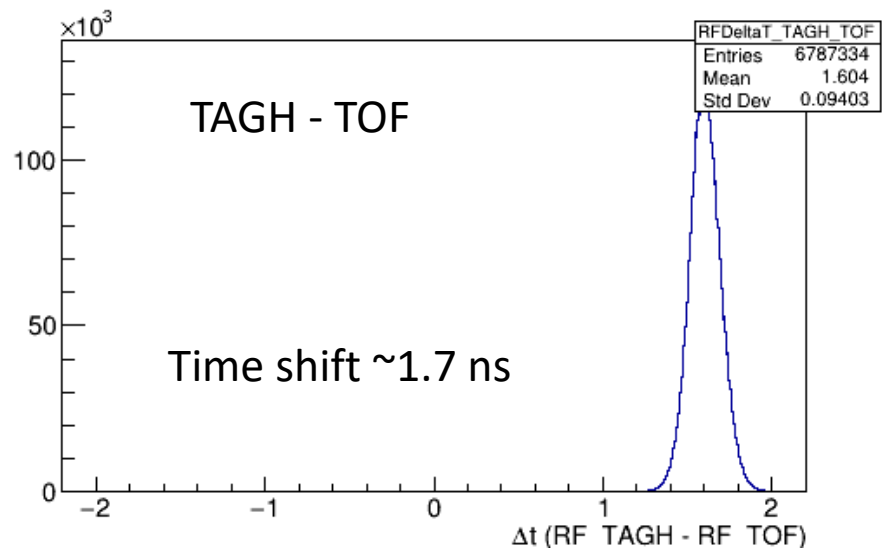


- PS RF is used as reference
- TAGH & TAGM are shifted by about 1.8 ns

## Before Calibration

## RF Times

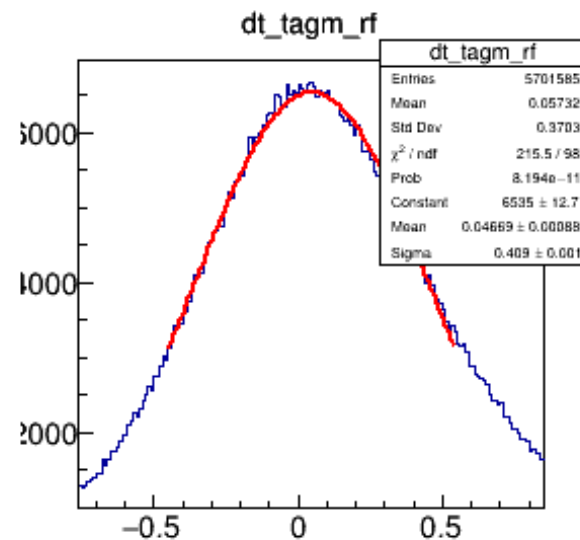
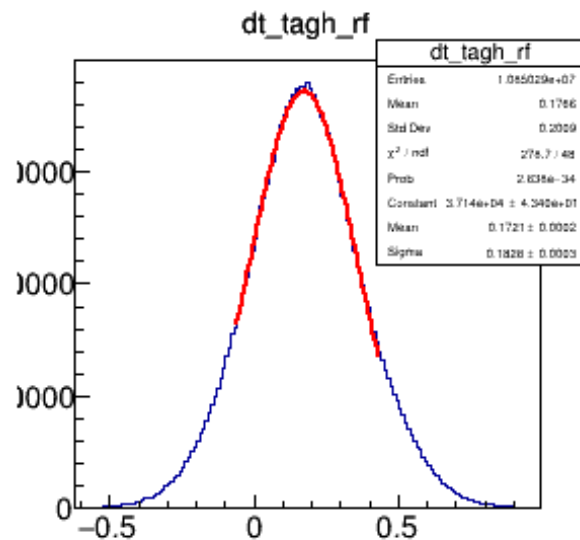
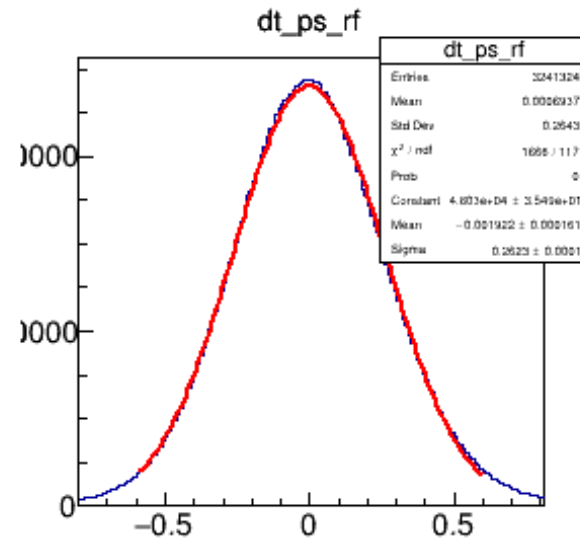
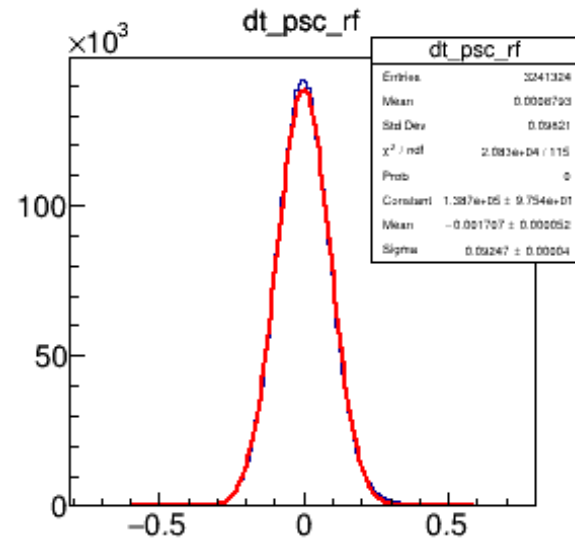
## After Calibration



# Adjustment of TAGH global time offsets

Run 90252

PSC FR



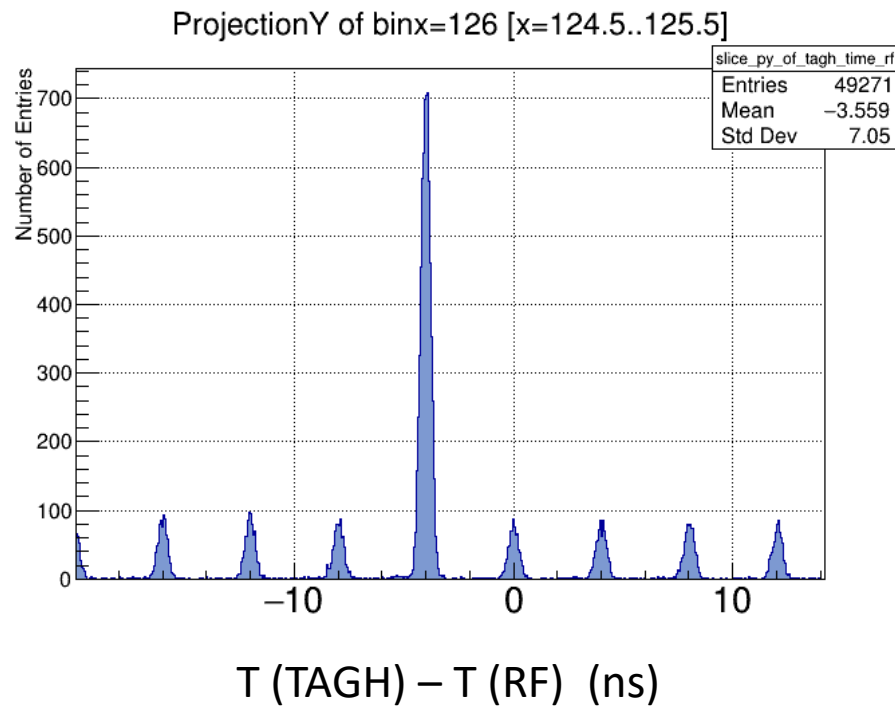
TAGH  
Shift by 0.2 ns



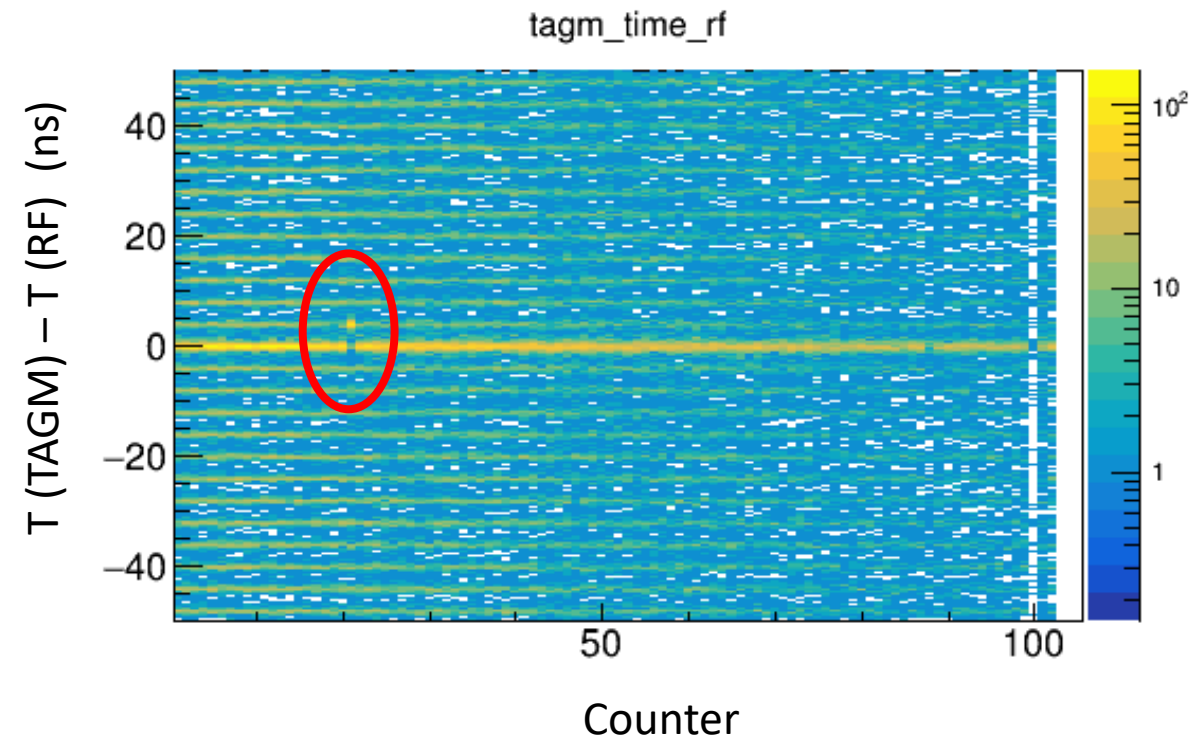
- PS, PSC, and TAGM times are well aligned
- TAGH time is shifted by 0.2 ns

## Individual Offsets

TAGH channels: 5 (8 ns), 125 (4 ns), 186 (4 ns)



TAGM channel 21 (4 ns)



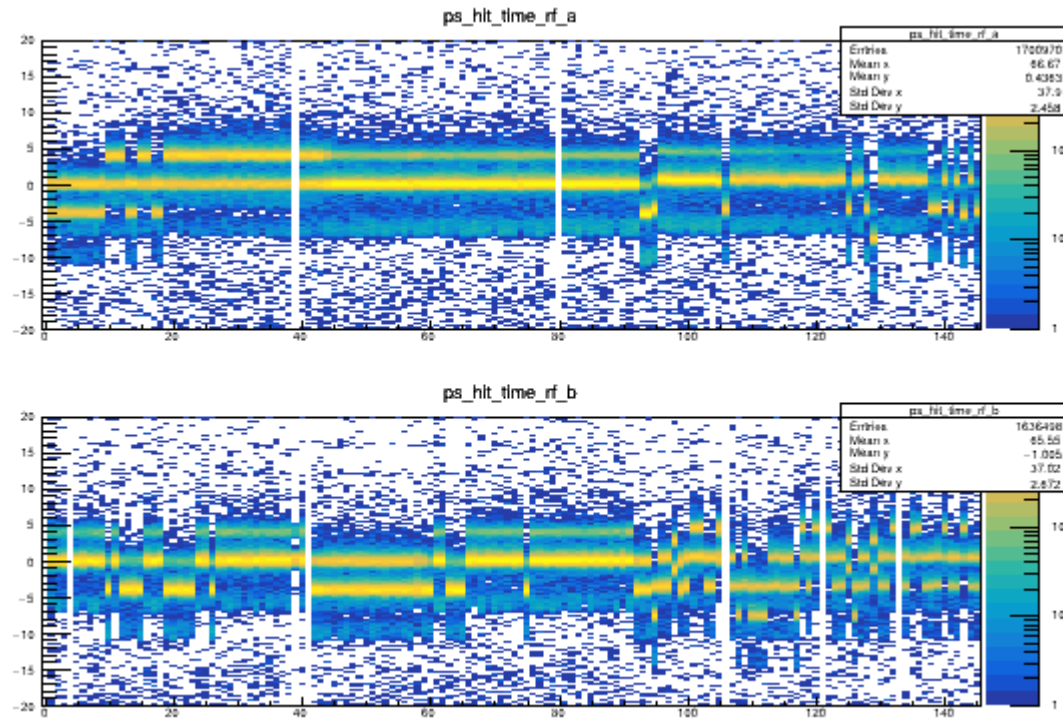
- Both ADC and TDC times are shifted
- Time shift for almost all (491) SRC runs (corrected)

# Notes on the PS Calibration

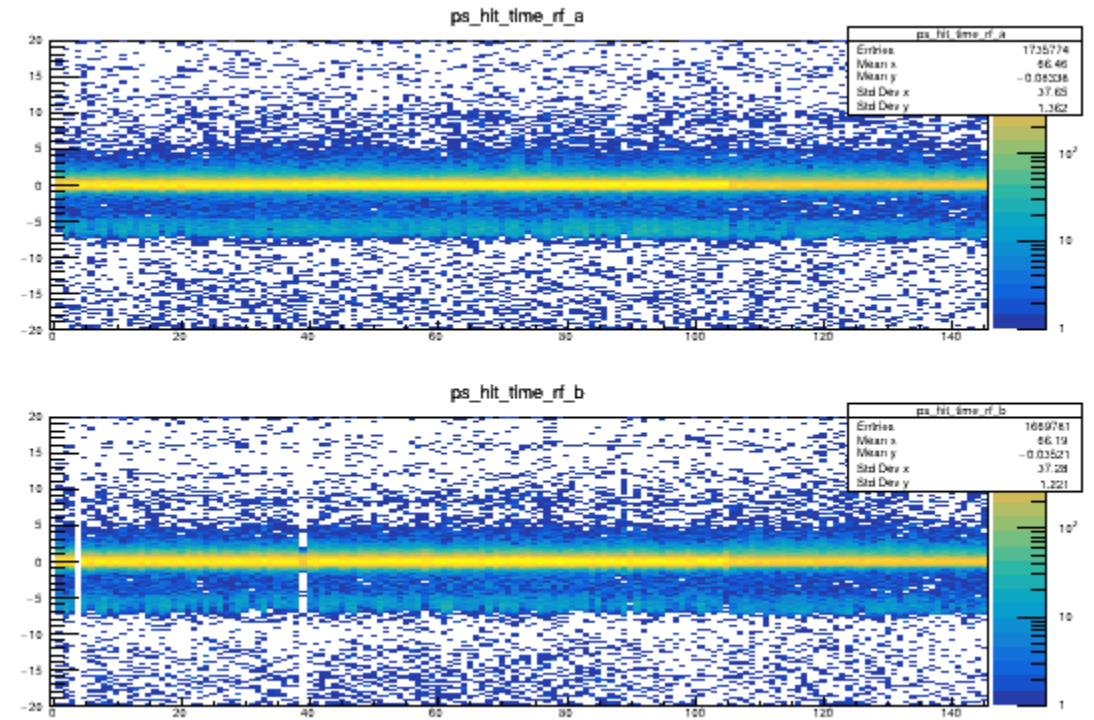
Before Calibration

After Calibration

$T(PS) - T(RF)$



PS counter



PS counter