

Status Report

Laveen

Postdoctoral fellow, UNCW

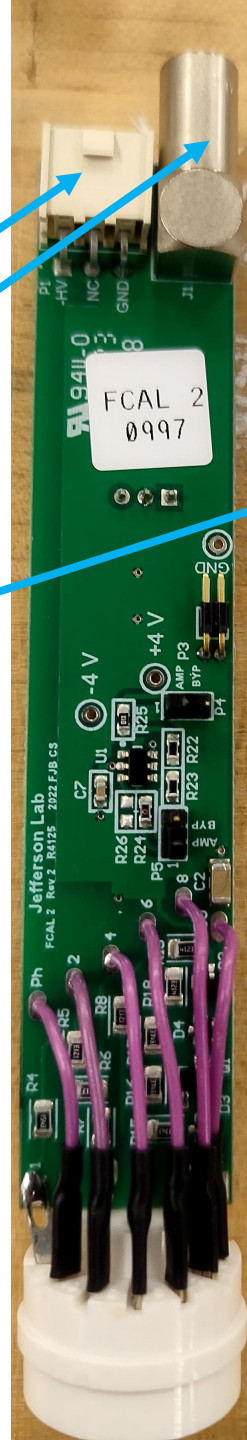
✓ **Cables Tested and Labeled so far,**

High Voltage (HV) cables = 320

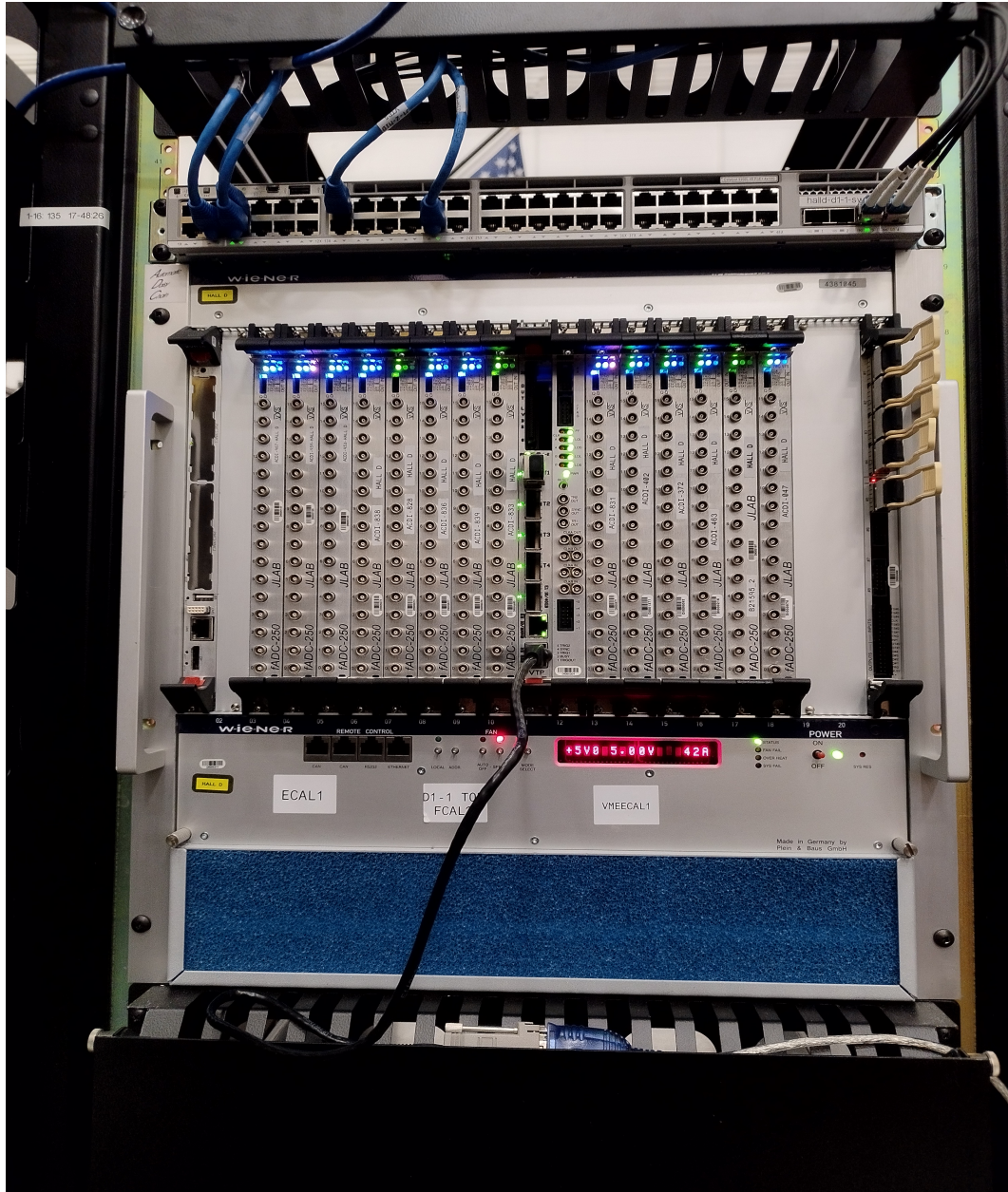
Low Voltage (LV) cables = 1320

After last meeting : 300 LV tested and labeled

- ✓ 160 more LV cables required to complete.
- ✓ Actively involved in divider installation.
- ✓ Completed 5 layers from bottom – 200 dividers



✓ Crate – Ethernet – Cable connections



Software

- ✓ Geometry : about to start
- ✓ Translation table : continuing

Translation .xlsx to ascii file using python

Slot	1	2	3	4	5	6	7	8	9	10	11	12	13	14	15	16	17
Module	CPU		fADC250	fADC250	fADC250	fADC250	fADC250	fADC250	fADC250	fADC250	CTP	SD	fADC250	fADC250	fADC250	fADC250	fADC250
S/N			ACDI-TBD	ACDI-TBD	ACDI-TBD	ACDI-TBD	ACDI-TBD	ACDI-TBD	ACDI-TBD	ACDI-TBD			ACDI-TBD	ACDI-TBD	ACDI-TBD	ACDI-TBD	ACDI-TBD
Channel																	
0			ECAL (1,2)	ECAL (1,18)	ECAL (2,15)	ECAL (3,12)	ECAL (4,10)	ECAL (5,9)	ECAL (6,9)	ECAL (7,10)			ECAL (8,12)	ECAL (9,15)	ECAL (10,19)	ECAL (12,14)	ECAL (14,13)
1			ECAL (1,3)	ECAL (1,19)	ECAL (2,16)	ECAL (3,13)	ECAL (4,11)	ECAL (5,10)	ECAL (6,10)	ECAL (7,11)			ECAL (8,13)	ECAL (9,16)	ECAL (10,20)	ECAL (12,15)	ECAL (14,14)
2			ECAL (1,4)	ECAL (1,20)	ECAL (2,17)	ECAL (3,14)	ECAL (4,12)	ECAL (5,11)	ECAL (6,11)	ECAL (7,12)			ECAL (8,14)	ECAL (9,17)	ECAL (11,10)	ECAL (12,16)	ECAL (14,15)
3			ECAL (1,5)	ECAL (2,2)	ECAL (2,18)	ECAL (3,15)	ECAL (4,13)	ECAL (5,12)	ECAL (6,12)	ECAL (7,13)			ECAL (8,15)	ECAL (9,18)	ECAL (11,11)	ECAL (12,17)	ECAL (14,16)
4			ECAL (1,6)	ECAL (2,3)	ECAL (2,19)	ECAL (3,16)	ECAL (4,14)	ECAL (5,13)	ECAL (6,13)	ECAL (7,14)			ECAL (8,16)	ECAL (9,19)	ECAL (11,12)	ECAL (12,18)	ECAL (14,17)
5			ECAL (1,7)	ECAL (2,4)	ECAL (2,20)	ECAL (3,17)	ECAL (4,15)	ECAL (5,14)	ECAL (6,14)	ECAL (7,15)			ECAL (8,17)	ECAL (9,20)	ECAL (11,13)	ECAL (12,19)	ECAL (14,18)
6			ECAL (1,8)	ECAL (2,5)	ECAL (3,2)	ECAL (3,18)	ECAL (4,16)	ECAL (5,15)	ECAL (6,15)	ECAL (7,16)			ECAL (8,18)	ECAL (10,9)	ECAL (11,14)	ECAL (12,20)	ECAL (14,19)
7			ECAL (1,9)	ECAL (2,6)	ECAL (3,3)	ECAL (3,19)	ECAL (4,17)	ECAL (5,16)	ECAL (6,16)	ECAL (7,17)			ECAL (8,19)	ECAL (10,10)	ECAL (11,15)	ECAL (13,12)	ECAL (14,20)
8			ECAL (1,10)	ECAL (2,7)	ECAL (3,4)	ECAL (3,20)	ECAL (4,18)	ECAL (5,17)	ECAL (6,17)	ECAL (7,18)			ECAL (8,20)	ECAL (10,11)	ECAL (11,16)	ECAL (13,13)	ECAL (15,14)
9			ECAL (1,11)	ECAL (2,8)	ECAL (3,5)	ECAL (4,3)	ECAL (4,19)	ECAL (5,18)	ECAL (6,18)	ECAL (7,19)			ECAL (9,8)	ECAL (10,12)	ECAL (11,17)	ECAL (13,14)	ECAL (15,15)
10			ECAL (1,12)	ECAL (2,9)	ECAL (3,6)	ECAL (4,4)	ECAL (4,20)	ECAL (5,19)	ECAL (6,19)	ECAL (7,20)			ECAL (9,9)	ECAL (10,13)	ECAL (11,18)	ECAL (13,15)	ECAL (15,16)
11			ECAL (1,13)	ECAL (2,10)	ECAL (3,7)	ECAL (4,5)	ECAL (5,4)	ECAL (5,20)	ECAL (6,20)	ECAL (8,7)			ECAL (9,10)	ECAL (10,14)	ECAL (11,19)	ECAL (13,16)	ECAL (15,17)
12			ECAL (1,14)	ECAL (2,11)	ECAL (3,8)	ECAL (4,6)	ECAL (5,5)	ECAL (6,5)	ECAL (7,6)	ECAL (8,8)			ECAL (9,11)	ECAL (10,15)	ECAL (11,20)	ECAL (13,17)	ECAL (15,18)
13			ECAL (1,15)	ECAL (2,12)	ECAL (3,9)	ECAL (4,7)	ECAL (5,6)	ECAL (6,6)	ECAL (7,7)	ECAL (8,9)			ECAL (9,12)	ECAL (10,16)	ECAL (12,11)	ECAL (13,18)	ECAL (15,19)
14			ECAL (1,16)	ECAL (2,13)	ECAL (3,10)	ECAL (4,8)	ECAL (5,7)	ECAL (6,7)	ECAL (7,8)	ECAL (8,10)			ECAL (9,13)	ECAL (10,17)	ECAL (12,12)	ECAL (13,19)	ECAL (15,20)
15			ECAL (1,17)	ECAL (2,14)	ECAL (3,11)	ECAL (4,9)	ECAL (5,8)	ECAL (6,8)	ECAL (7,9)	ECAL (8,11)			ECAL (9,14)	ECAL (10,18)	ECAL (12,13)	ECAL (13,20)	ECAL (16,15)
Cable Manager	VCM-D1-1-F-A											VCM-D1-2-F-A					

```

(temp-2) laveenpv@laveenpv-mac temp-2 % python3 C6.py
Enter crate number for D1-1-TOP: 111
Enter crate number for D1-1-MID: 112
Enter crate number for D1-1-BOT: 113
Enter crate number for D1-2-TOP: 114
Enter crate number for D1-2_MID: 115
Enter crate number for D1-2-BOT: 116
Enter crate number for D1-3-TOP: 117
  
```

Translation .xlsx to ascii file using python

Slot	1	2	3	4	5	6	7	8	9	10	
Crate	D1-1-TOP										
S/N	TBD										
Sub-System	ECAL										
Function	fADC250	2V									
Module	CPU		fADC250	fADC250	fADC250	fADC250	fADC250	fADC250	fADC250	fADC250	CTP
S/N			ACDI-TBD	ACDI-TBD	ACDI-TBD	ACDI-TBD	ACDI-TBD	ACDI-TBD	ACDI-TBD	ACDI-TBD	
Channel											
0			ECAL (1,2)	ECAL (1,18)	ECAL (2,15)	ECAL (3,12)	ECAL (4,10)	ECAL (5,9)	ECAL (6,9)	ECAL (7,10)	
1			ECAL (1,3)	ECAL (1,19)	ECAL (2,16)	ECAL (3,13)	ECAL (4,11)	ECAL (5,10)	ECAL (6,10)	ECAL (7,11)	
2			ECAL (1,4)	ECAL (1,20)	ECAL (2,17)	ECAL (3,14)	ECAL (4,12)	ECAL (5,11)	ECAL (6,11)	ECAL (7,12)	
3			ECAL (1,5)	ECAL (2,2)	ECAL (2,18)	ECAL (3,15)	ECAL (4,13)	ECAL (5,12)	ECAL (6,12)	ECAL (7,13)	
4			ECAL (1,6)	ECAL (2,3)	ECAL (2,19)	ECAL (3,16)	ECAL (4,14)	ECAL (5,13)	ECAL (6,13)	ECAL (7,14)	
5			ECAL (1,7)	ECAL (2,4)	ECAL (2,20)	ECAL (3,17)	ECAL (4,15)	ECAL (5,14)	ECAL (6,14)	ECAL (7,15)	
6			ECAL (1,8)	ECAL (2,5)	ECAL (3,2)	ECAL (3,18)	ECAL (4,16)	ECAL (5,15)	ECAL (6,15)	ECAL (7,16)	
7			ECAL (1,9)	ECAL (2,6)	ECAL (3,3)	ECAL (3,19)	ECAL (4,17)	ECAL (5,16)	ECAL (6,16)	ECAL (7,17)	
8			ECAL (1,10)	ECAL (2,7)	ECAL (3,4)	ECAL (3,20)	ECAL (4,18)	ECAL (5,17)	ECAL (6,17)	ECAL (7,18)	
9			ECAL (1,11)	ECAL (2,8)	ECAL (3,5)	ECAL (4,3)	ECAL (4,19)	ECAL (5,18)	ECAL (6,18)	ECAL (7,19)	
10			ECAL (1,12)	ECAL (2,9)	ECAL (3,6)	ECAL (4,4)	ECAL (4,20)	ECAL (5,19)	ECAL (6,19)	ECAL (7,20)	
11			ECAL (1,13)	ECAL (2,10)	ECAL (3,7)	ECAL (4,5)	ECAL (5,4)	ECAL (5,20)	ECAL (6,20)	ECAL (8,7)	
12			ECAL (1,14)	ECAL (2,11)	ECAL (3,8)	ECAL (4,6)	ECAL (5,5)	ECAL (6,5)	ECAL (7,6)	ECAL (8,8)	
13			ECAL (1,15)	ECAL (2,12)	ECAL (3,9)	ECAL (4,7)	ECAL (5,6)	ECAL (6,6)	ECAL (7,7)	ECAL (8,9)	
14			ECAL (1,16)	ECAL (2,13)	ECAL (3,10)	ECAL (4,8)	ECAL (5,7)	ECAL (6,7)	ECAL (7,8)	ECAL (8,10)	
15			ECAL (1,17)	ECAL (2,14)	ECAL (3,11)	ECAL (4,9)	ECAL (5,8)	ECAL (6,8)	ECAL (7,9)	ECAL (8,11)	
Cable Manager	VCM-D1-1-F-A										

```

115 3 0 -2 1
115 3 1 -3 1
115 3 2 -4 1
115 3 3 -5 1
115 3 4 -6 1
115 3 5 -7 1
115 3 6 -8 1
115 3 7 -9 1
115 3 8 -10 1
115 3 9 -11 1
115 3 10 -12 1
115 3 11 -13 1
115 3 12 =14 1
115 3 13 =15 1
115 3 14 -16 1
115 3 15 -17 1
115 4 0 -4 2
115 4 1 -5 2
115 4 2 -6 2
115 4 3 -7 2
115 4 4 -8 2
115 4 5 -9 2
115 4 6 -10 2
115 4 7 -11 2
115 4 8 -12 2
115 4 9 -13 2
115 4 10 -14 2
115 4 11 -15 2
115 4 12 -16 2
115 4 13 -17 2
115 4 14 -5 3
115 4 15 -6 3
115 5 0 -7 3
115 5 1 -8 3
115 5 2 -9 3
115 5 3 -10 3
115 5 4 -11 3
115 5 5 -12 3
115 5 6 -13 3
    
```

```

(temp-2) laveenpv@laveenpv-mac temp-2 % python3 C6.py
Enter crate number for D1-1-TOP: 111
Enter crate number for D1-1-MID: 112
Enter crate number for D1-1-BOT: 113
Enter crate number for D1-2-TOP: 114
Enter crate number for D1-2_MID: 115
Enter crate number for D1-2-BOT: 116
Enter crate number for D1-3-TOP: 117
    
```

Output

