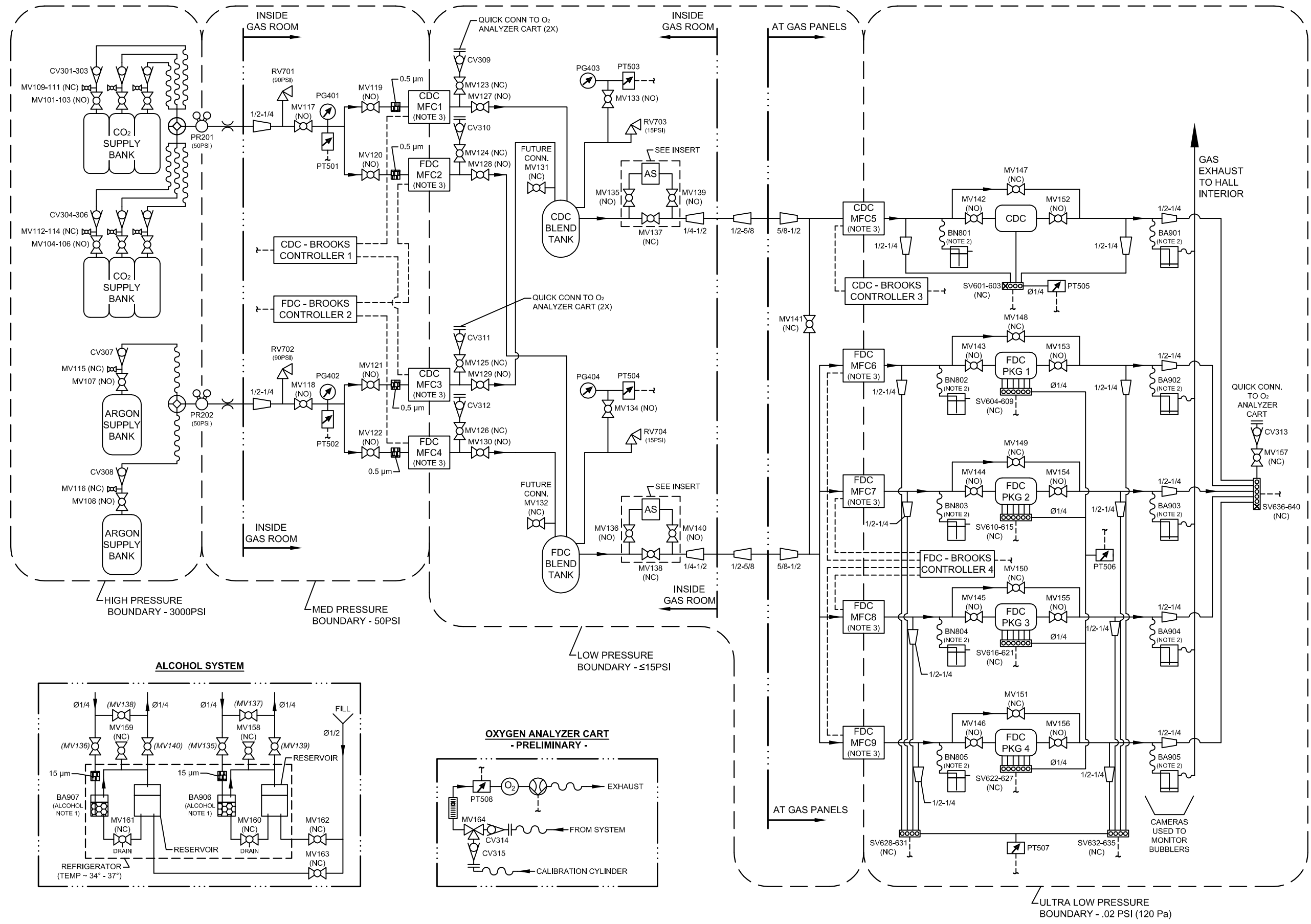


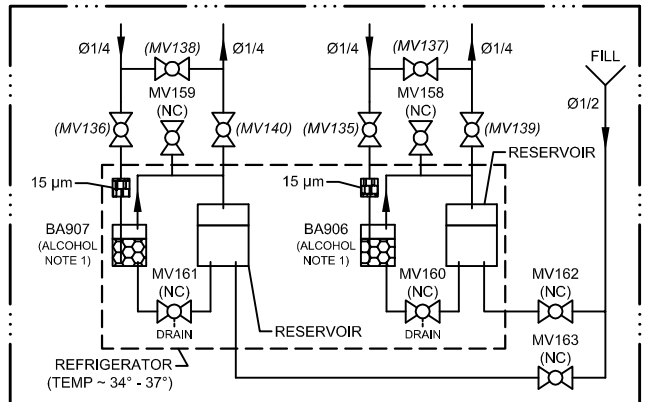
DIAGRAM OF THE GAS SYSTEM FOR THE CDC AND THE FDC



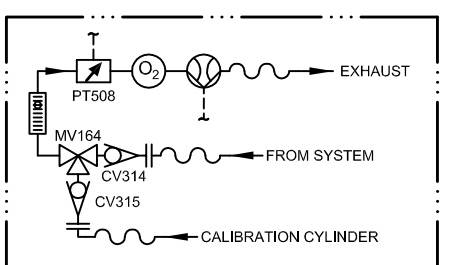
LEGEND	
	MANUAL VALVE (MV1XX)
	CHECK VALVE (CV3XX)
	RELIEF VALVE (RV7XX)
	SINTERED METAL FILTER
	3-WAY VALVE (MV1XX)
	PRESSURE REGULATOR (PR2XX)
	PRESSURE TRANSMITTER (PT5XX)
	PRESSURE GAUGE (PG4XX)
	ALCOHOL SUPPLY SYSTEM
	BUBBLER - NEVER (BN8XX)
	BUBBLER - ALWAYS (BA9XX)
	ALCOHOL BUBBLER - ALWAYS (BA9XX)
	ROTAMETER
	LINK TO/FROM PLC
	VACUUM PUMP
	OXYGEN ANALYZER
	REDUCER (SIZES LISTED)
	TUBING OR PIPING CONNECTION
	FLEX HOSE
	ELECTRICAL CONNECTION
	MANIFOLD W/SOLENOID VALVES (SV6XX)
	AUTO CHANGEOVER MANIFOLD
	INLINE FLOW RESTRICTOR (DIA TBD)
	QUICK DISCONNECT

- NOTES:**
- REFER TO OPERATORS MANUAL D00000-10-02-P001 FOR ALCOHOL SPECIFICATION AND REFILLING PROCEDURE.
 - REFER TO OPERATORS MANUAL D00000-10-02-P001 FOR OIL SPECIFICATION, FILLING VOLUMES, AND REFILLING PROCEDURE.
 - MASS FLOW CONTROLLERS WERE CALIBRATED USING NITROGEN GAS, FLOW RATES ARE AS FOLLOWS;
 - MFC1 = 4 L/M @ 50PSI
 - MFC2 & 4 = 1.4 L/M @ 50PSI
 - MFC3 = 2 L/M @ 50PSI
 - MFC5 = 6 L/M @ 15PSI
 - MFC6 - 9 = 0.5 L/M @ 15PSI
 - FOR FURTHER SYSTEM INFORMATION, REFERENCE THE FOLLOWING DRAWINGS & PROCEDURES;
 - D00000-10-02-0000 (GAS SYSTEM ASSY)
 - D00000-10-02-P002 (PRESSURE TEST SOP)
 - D00000-10-02-P001 (OPERATORS MANUAL)
 - D00000-10-02-A002 (SYSTEM ANALYSIS)

ALCOHOL SYSTEM



OXYGEN ANALYZER CART - PRELIMINARY -



ULTRA LOW PRESSURE BOUNDARY - .02 PSI (120 Pa)