

Fire pull station

Fire extinguisher

Emergency Exit button

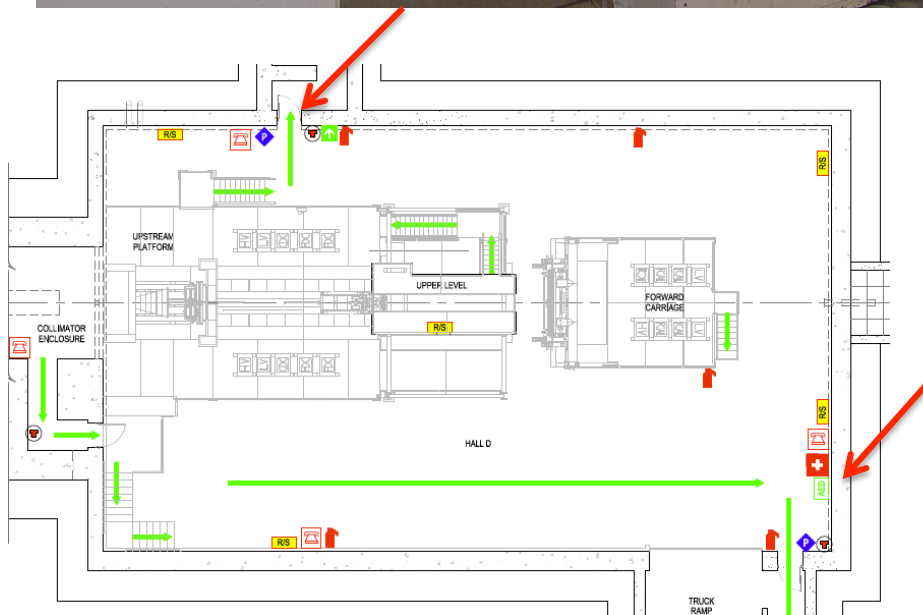
Power kill button

Trips all power in Hall except emergency power

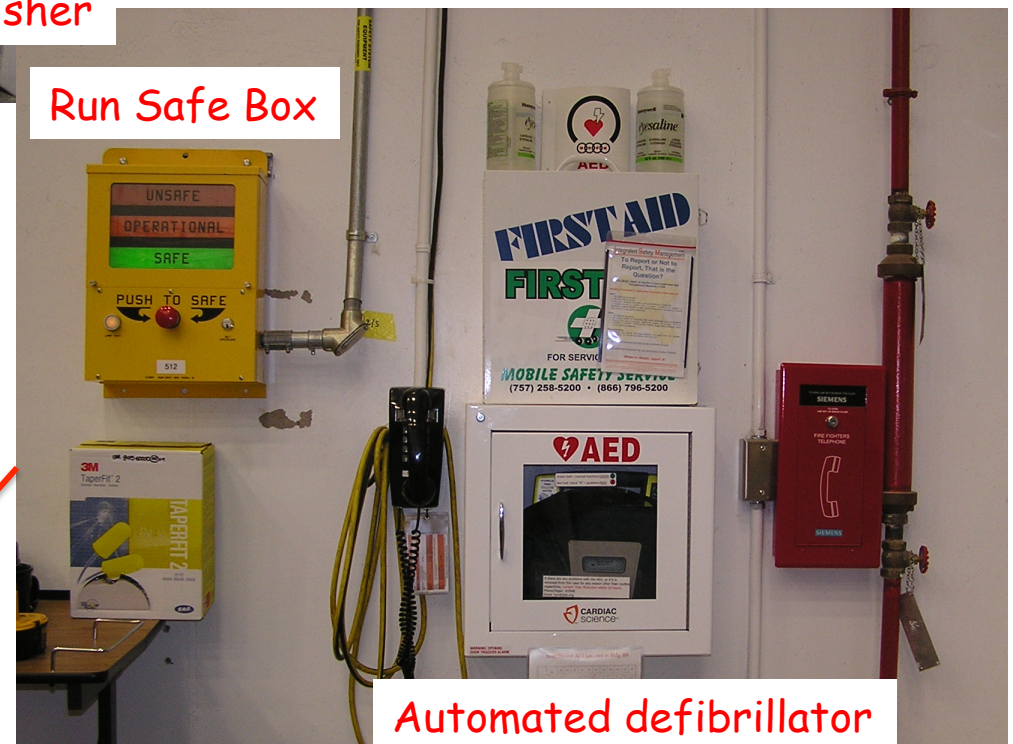


Exit button

Note: Both Exit Buttons disable mag locks on door



Run Safe Box



Automated defibrillator



Power kill button

Fire extinguisher



Beam crash button



Power kill button

Both kill buttons trip all power in Counting Room



Fire alarm

Beam status

Flammable gas alarm in Hall D

