



THOMAS JEFFERSON NATIONAL ACCELERATOR FACILITY
12000 Jefferson Avenue
Newport News, VA 23606

HALL D PROCEDURE NO.:
D00000-00-00-P001 Rev -

TITLE: CDC Installation Procedure

DATE: 04/22/2014

BY: Tim Whitlatch

APP: Beni Zihlman

CHK: Tom Carstens

REV.	DESCRIPTION	BY	CHK.	APP.	APP.	DATE

References:

Hall D - GlueX Utilities Gas Systems - Hall D Detector Gas System P&ID D00000-10-02-5002

Hall D - GlueX Utilities Gas Systems - Detector Gas System Assembly D00000-10-02-0000
Hall D - GlueX Installation – FDC/CDC Installation D00000-00-00-1014
Hall D - GlueX Installation – FDC installation D00000-00-00-P002
Hall D - GlueX Detectors – CDC assy D00000-01-02-1000
Hall D - GlueX Utilities Gas Systems - Detector CDC /FDC Bypass Panel D00000-10-02-1008 / -1009
Hall D - GlueX Detectors – Gas system purge D00000-10-02-P001

NOTE: Only personnel approved by the Hall D work Coordinator may perform this operation

Purpose - The purpose of this procedure is to instruct on the installation of the CDC into it's final position inside the BCAL. This procedure is to be completed after the FDC installation (D00000-00-00-P002) is complete.

Procedure:

1. Install the FDC long rail cart as shown on fig. 1 and described in D00000-00-00-P002.
2. Crane the CDC with cart onto the upstream platform to position shown on fig.1
3. Slide the CDC into the bore of the BCAL until the downstream bearings of the CDC touch the upstream bearings of the FDC. Caution: Only push on the side bearing locations.
4. Clamp the CDC upstream bearings to the rail to ensure it is locked in position.
5. Connect supply and exhaust gas lines as shown in figures 2 and 3.
6. Connect high voltage, low voltage and signal cables as shown in figures 2 and 3.
7. Purge gas system per D00000-10-02-P001
8. Install and turn on cooling air system as shown in figures 3 and 4.

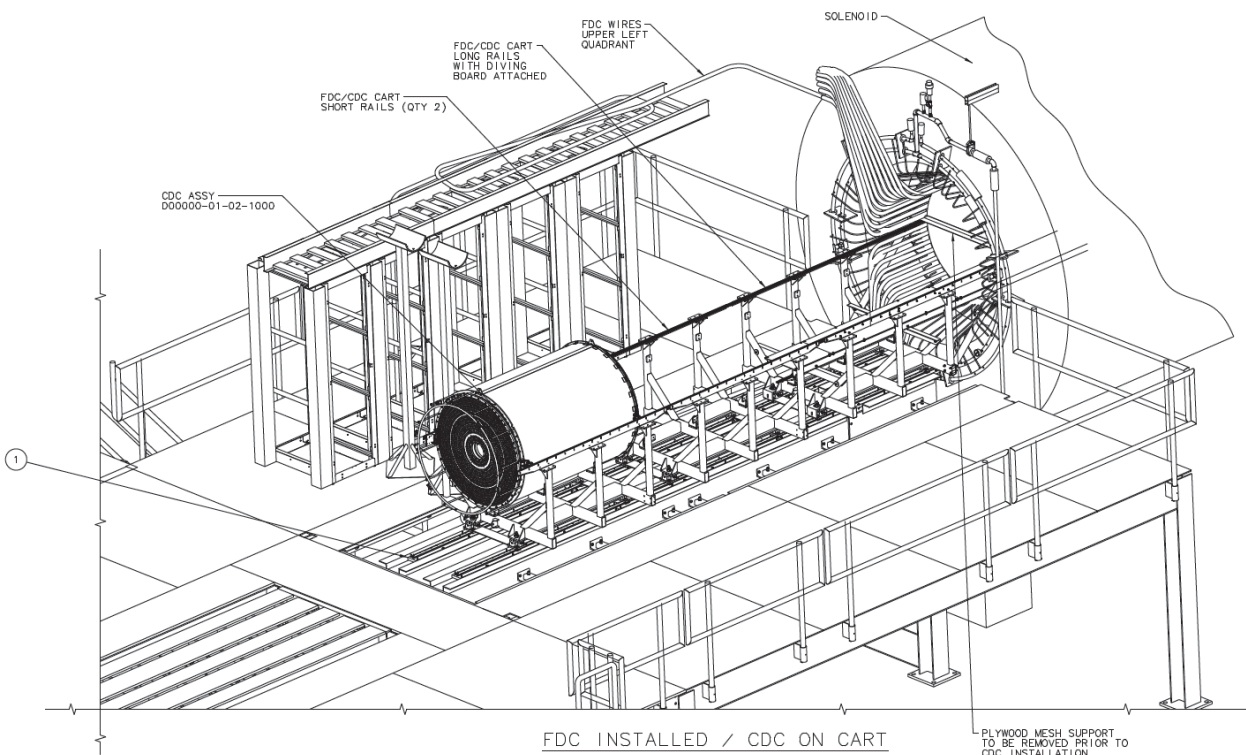


Fig 1

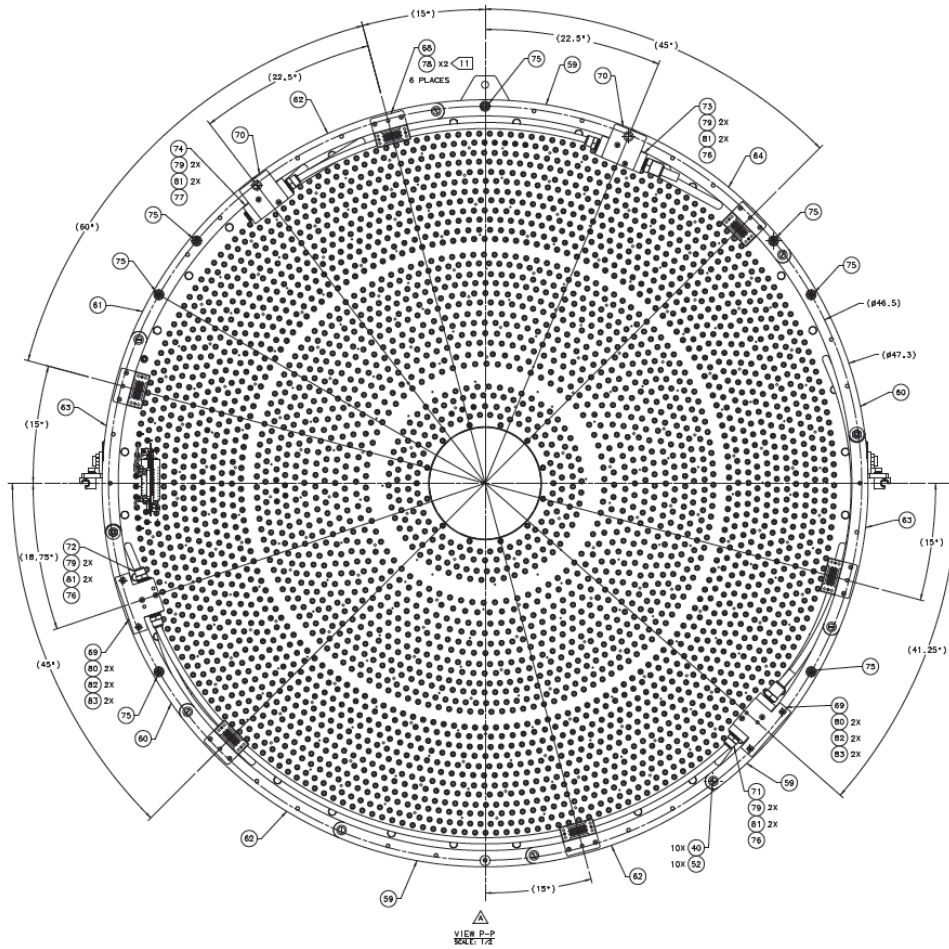


Fig 2

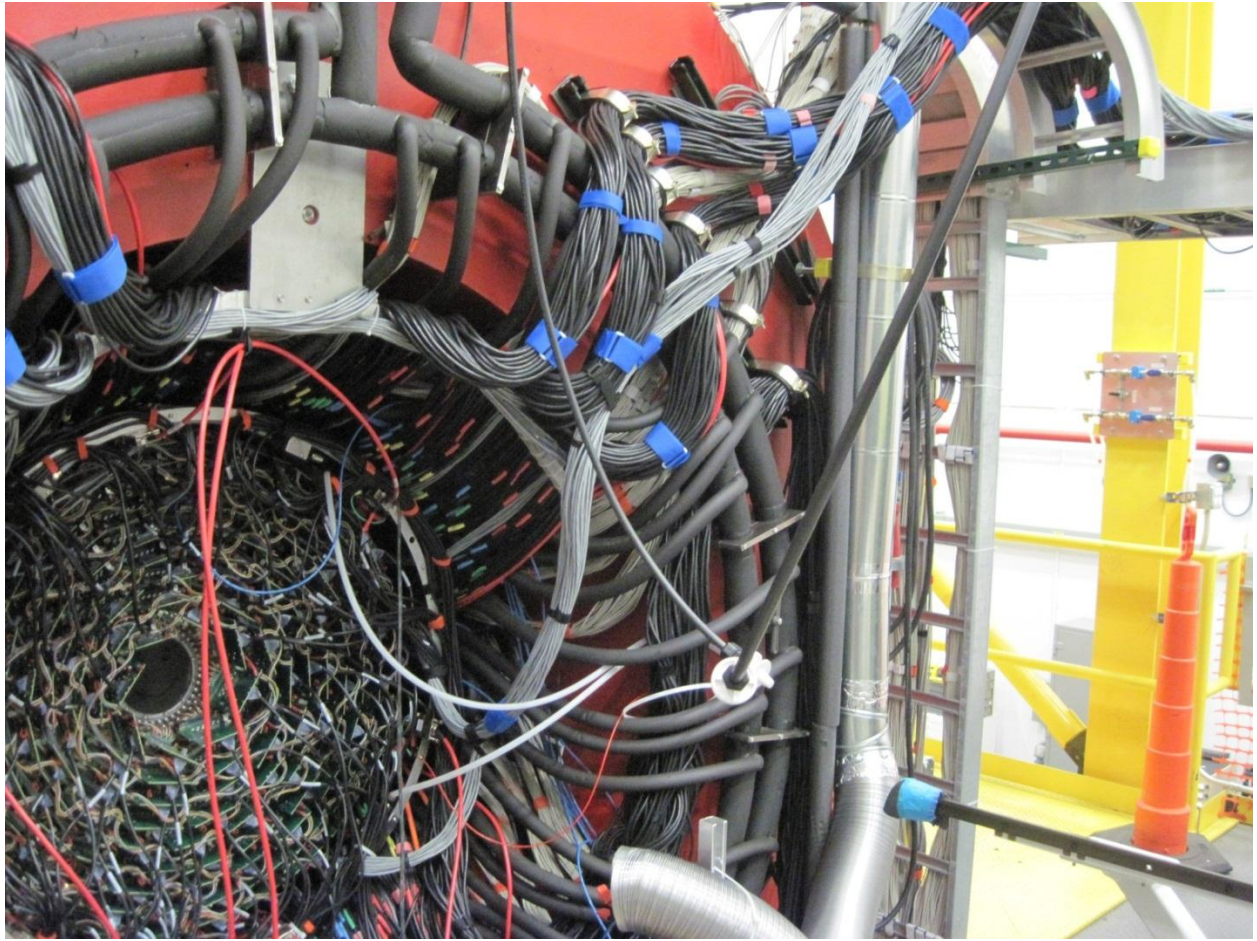


Fig 3

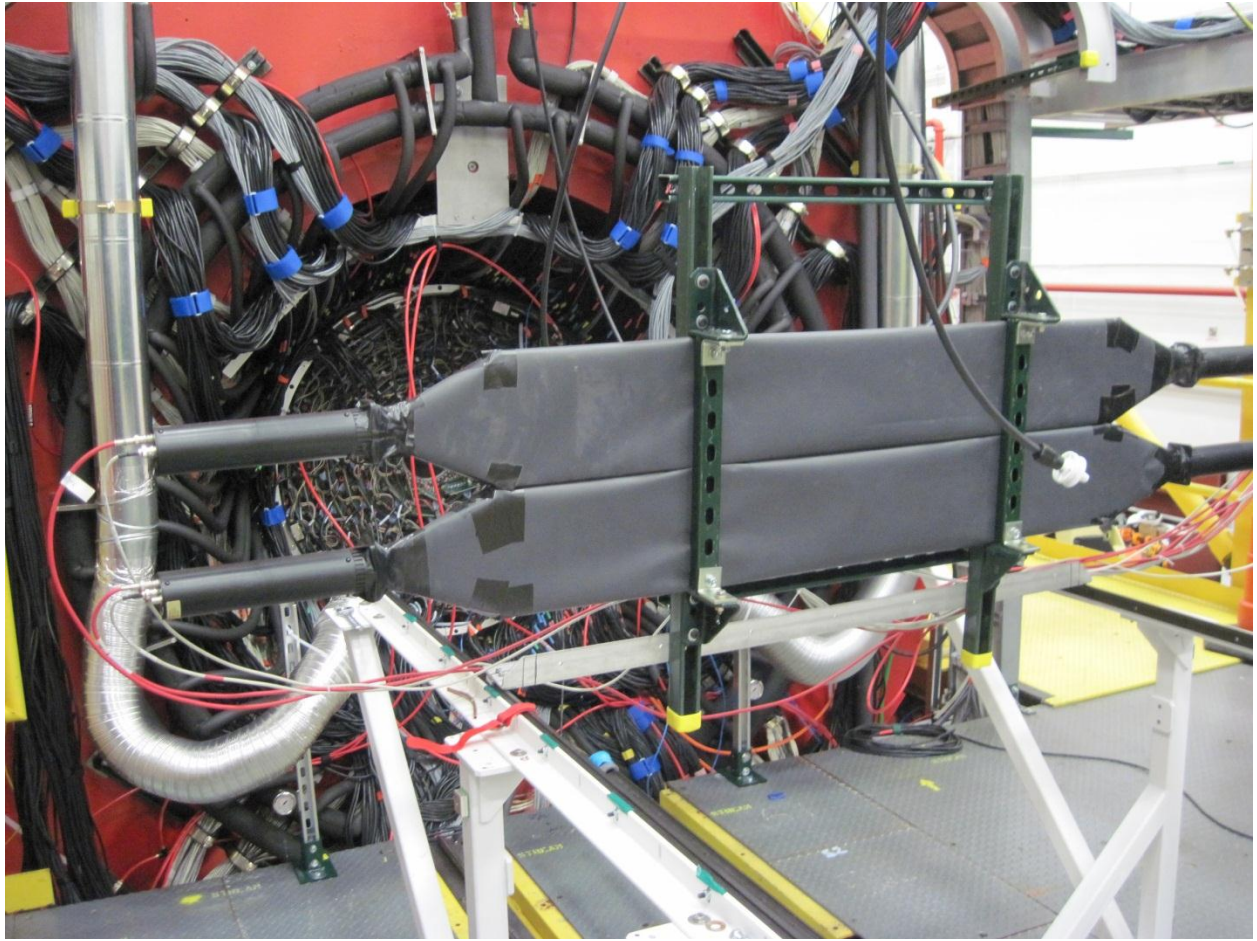


Fig 4