

FCAL energy calibration QC

Igal Jaeglé

Thomas Jefferson National Accelerator Facility

for the **GlueX** Collaboration

February 21, 2023

2022-08-period-2-iteration-7-method-2

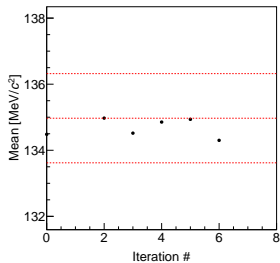


Table of contents

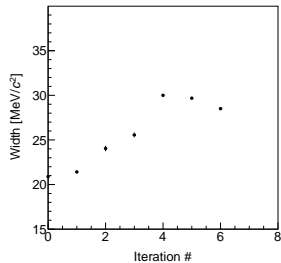
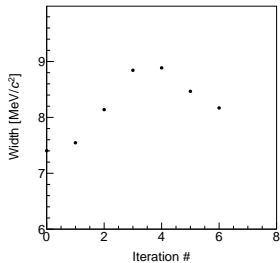
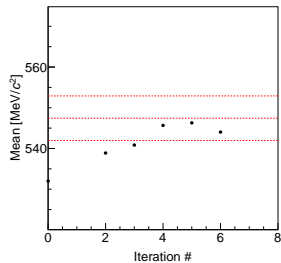
- 1 Overall QC
- 2 QC per rings

Overall QC vs iteration

● π^0

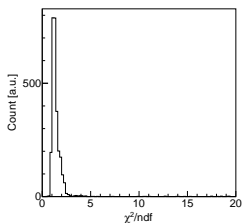


● η

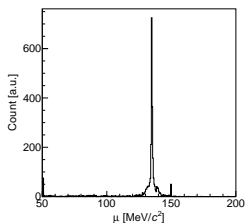


Overall QC, summary distributions

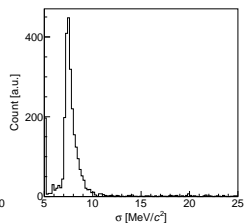
● χ^2 distribution



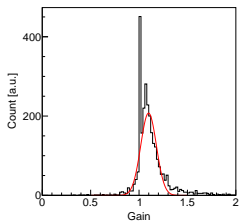
● Fitted peak distribution



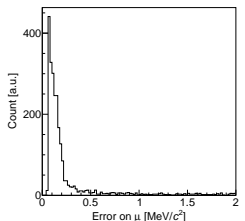
● Fitted width distribution



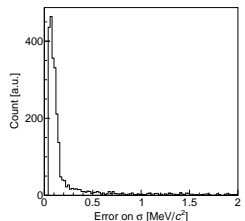
● Gain distribution



● Fitted peak error distribution

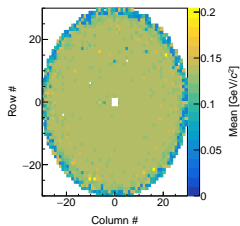


● Fitted width error distribution

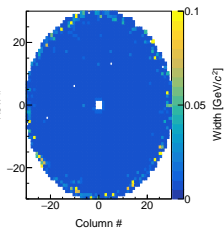


Overall QC, summary maps

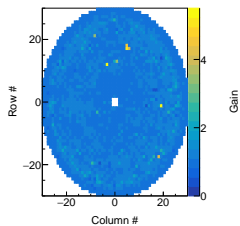
● Fitted peak map



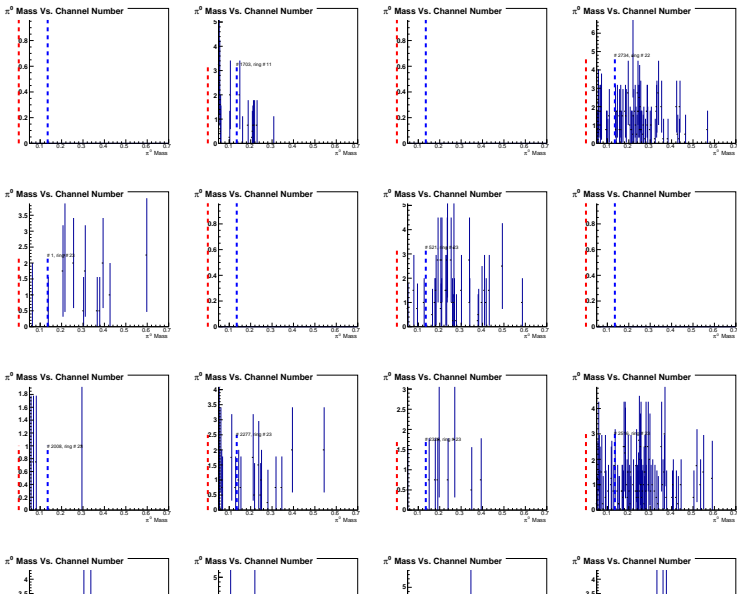
● Fitted width map



● Gain map



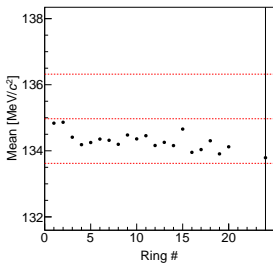
Overall QC, bad channels



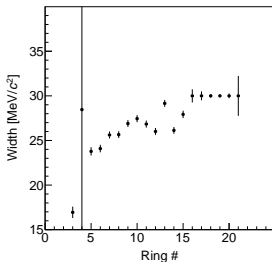
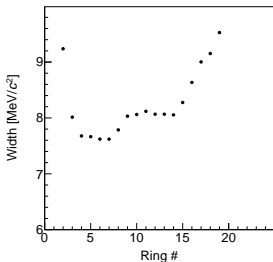
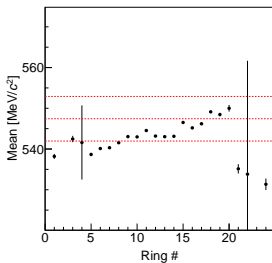
QC per rings

If radius divided by 5 cm, there is 24 rings

● π^0



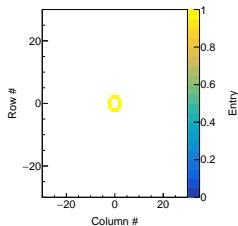
● η



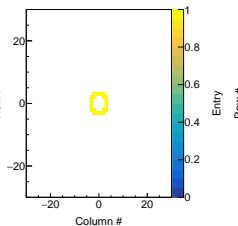
QC per rings

If radius divided by 5 cm, there is 24 rings

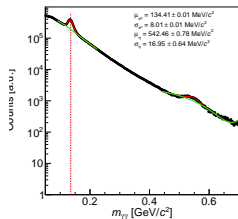
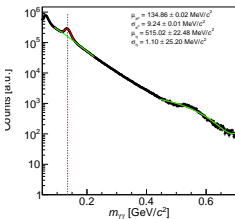
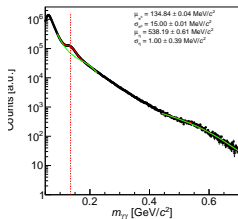
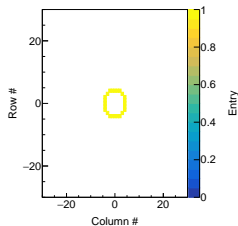
● Ring 1



● Ring 2



● Ring 3



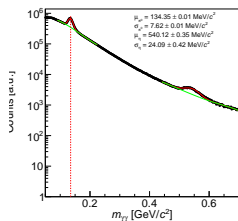
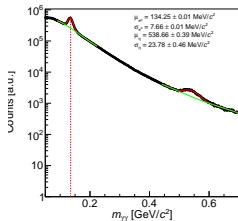
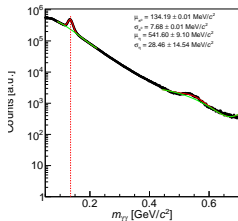
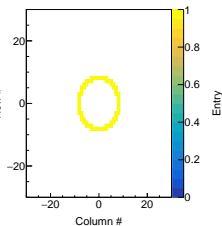
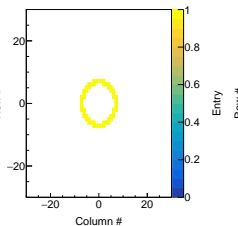
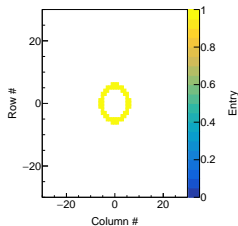
QC per rings

If radius divided by 5 cm, there is 24 rings

● Ring 4

● Ring 5

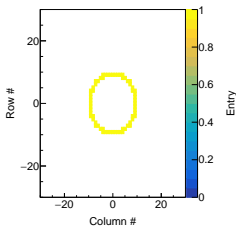
● Ring 6



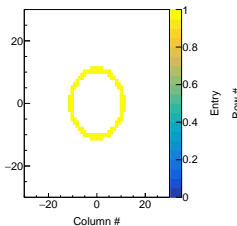
QC per rings

If radius divided by 5 cm, there is 24 rings

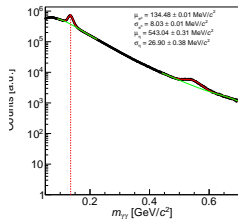
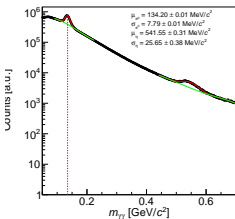
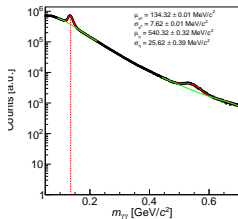
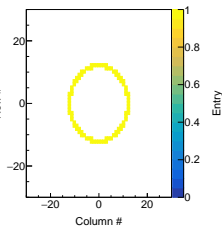
● Ring 7



● Ring 8



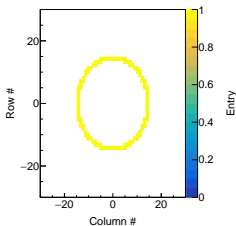
● Ring 9



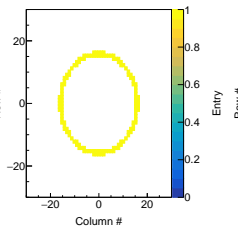
QC per rings

If radius divided by 5 cm, there is 24 rings

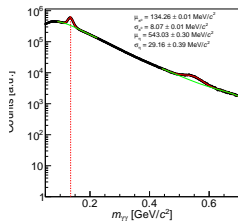
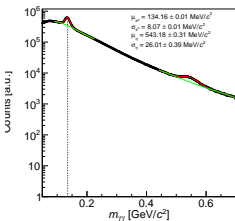
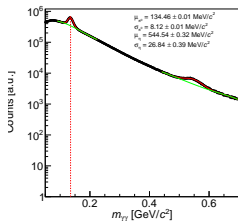
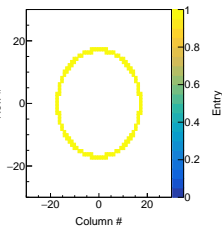
● Ring 11



● Ring 12



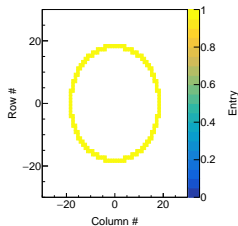
● Ring 13



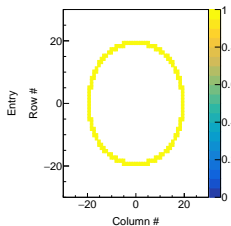
QC per rings

If radius divided by 5 cm, there is 24 rings

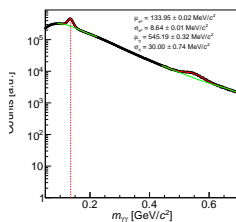
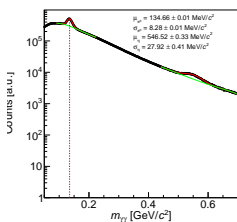
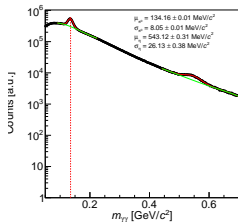
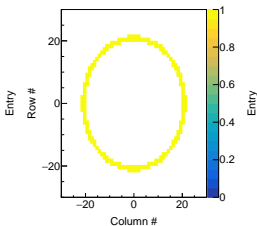
● Ring 14



● Ring 15



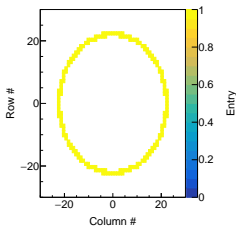
● Ring 16



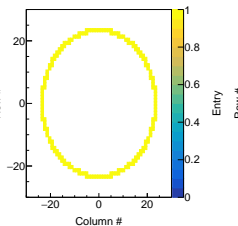
QC per rings

If radius divided by 5 cm, there is 24 rings

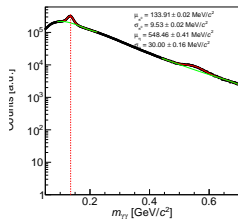
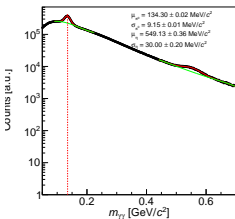
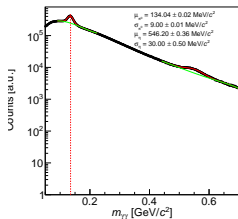
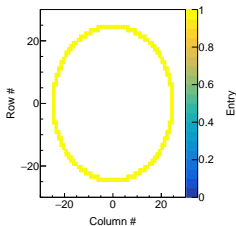
● Ring 17



● Ring 18



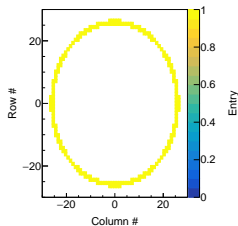
● Ring 19



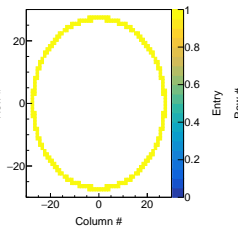
QC per rings

If radius divided by 5 cm, there is 24 rings

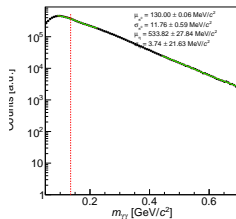
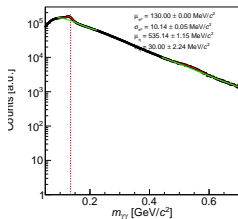
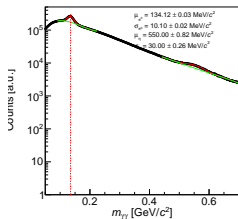
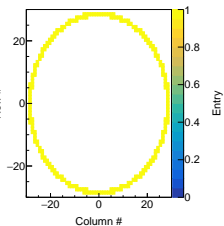
● Ring 20



● Ring 21



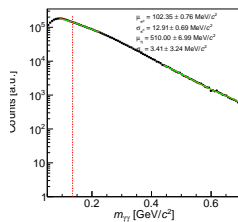
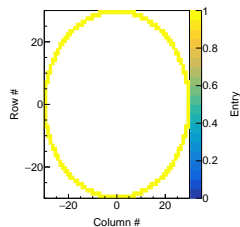
● Ring 22



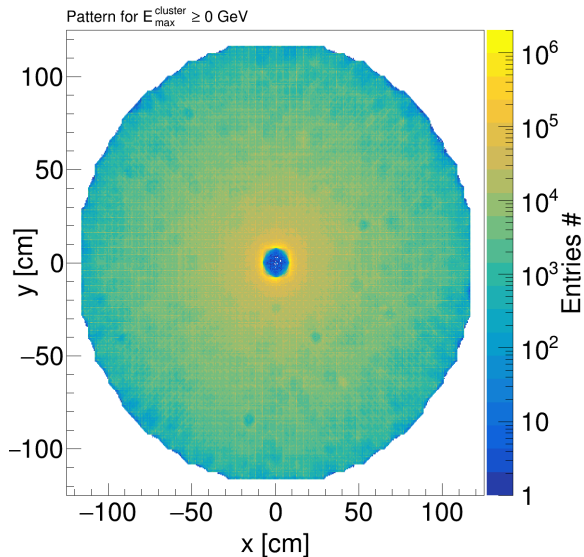
QC per rings

If radius divided by 5 cm, there is 24 rings

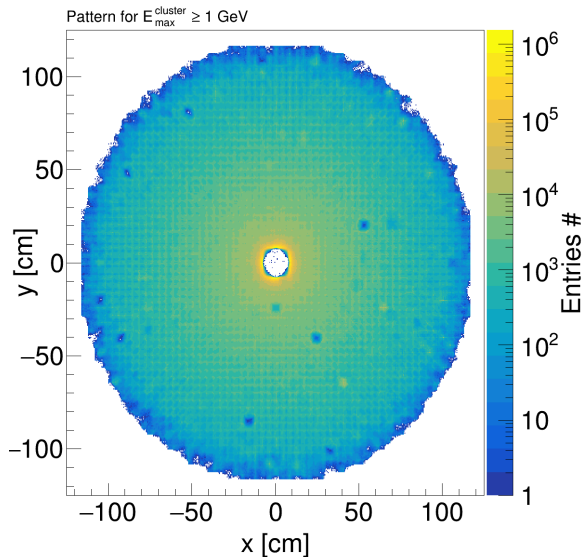
● Ring 23



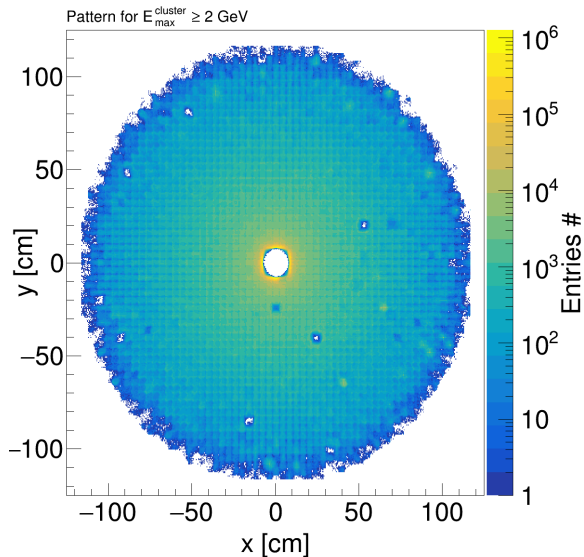
FCAL pattern



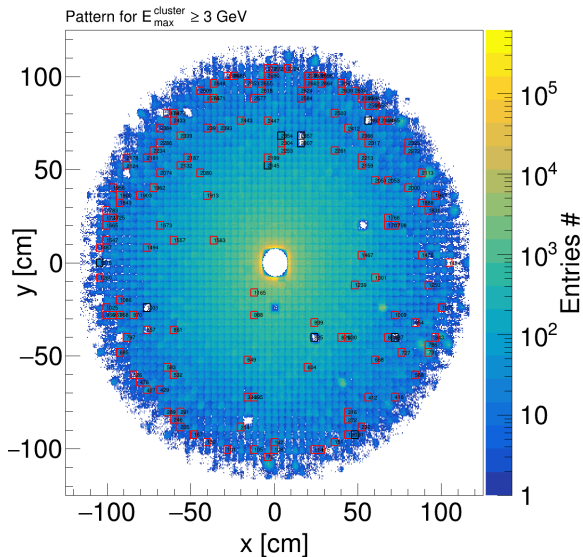
FCAL pattern



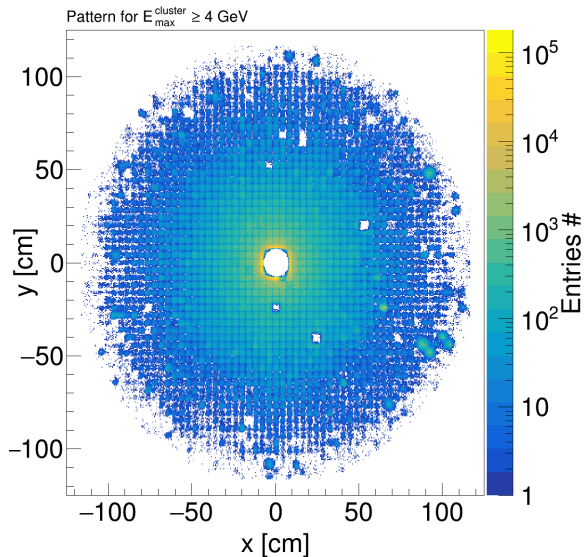
FCAL pattern



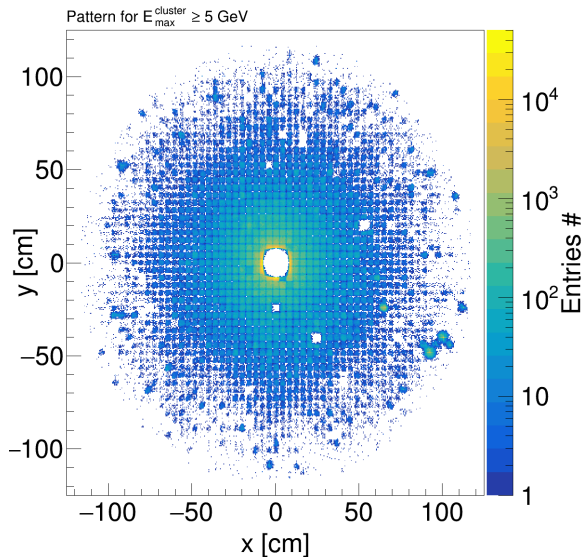
FCAL pattern



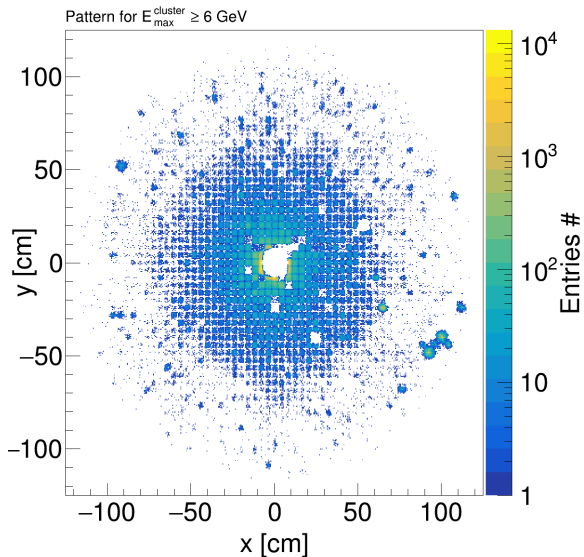
FCAL pattern



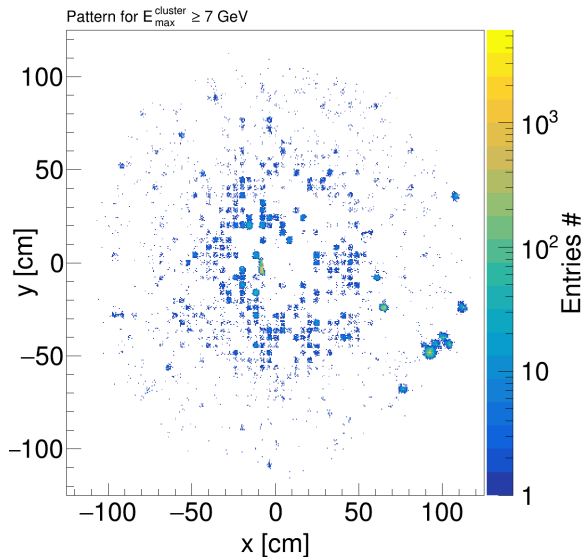
FCAL pattern



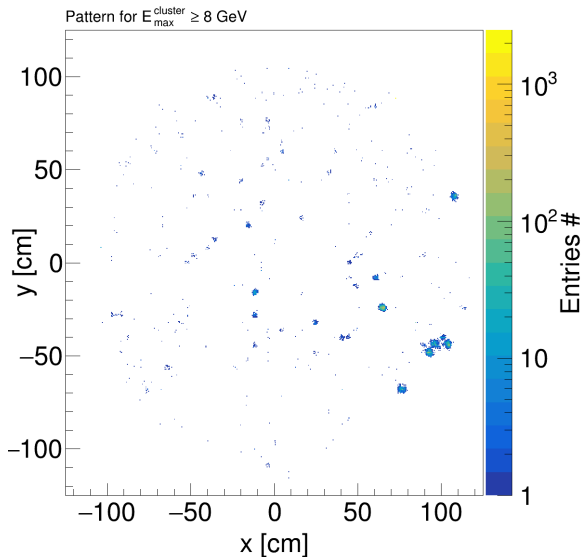
FCAL pattern



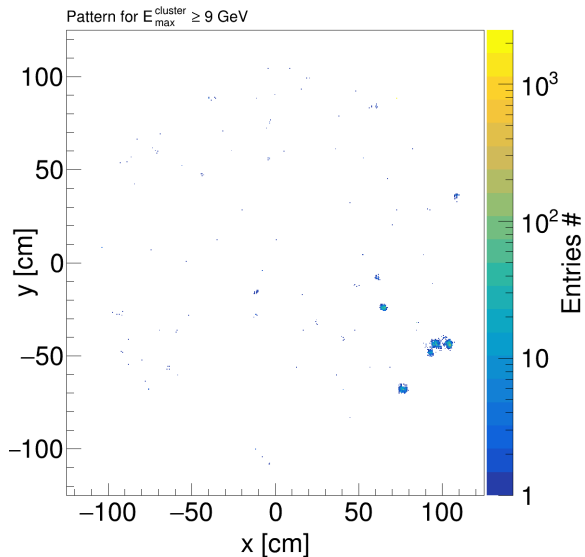
FCAL pattern



FCAL pattern



FCAL pattern



FCAL pattern

