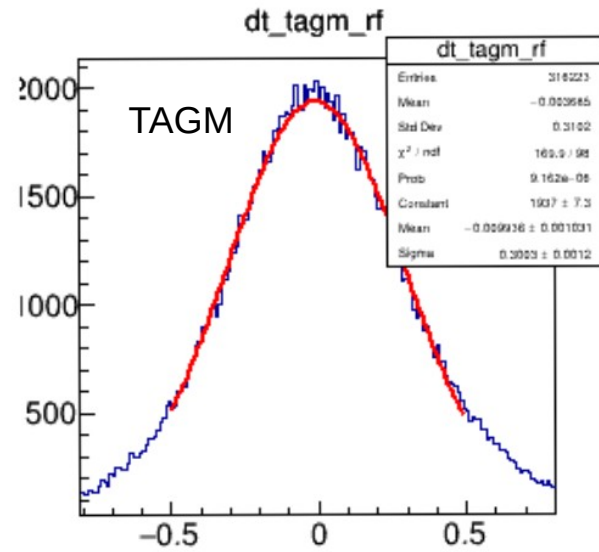
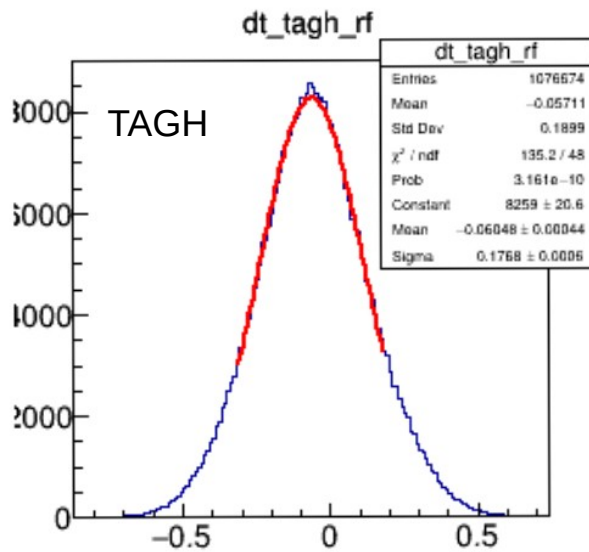
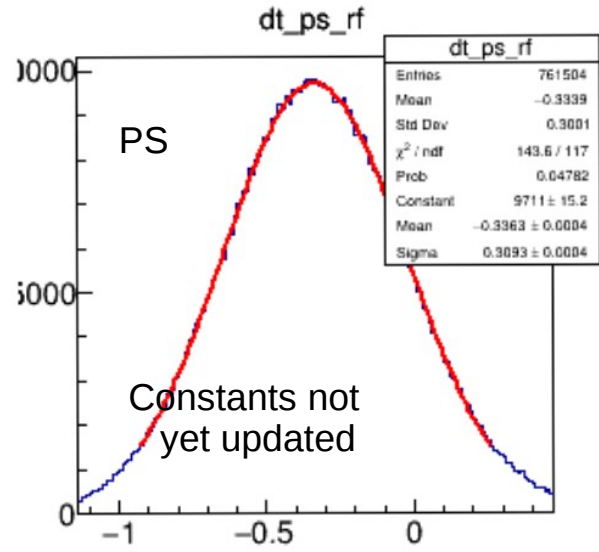
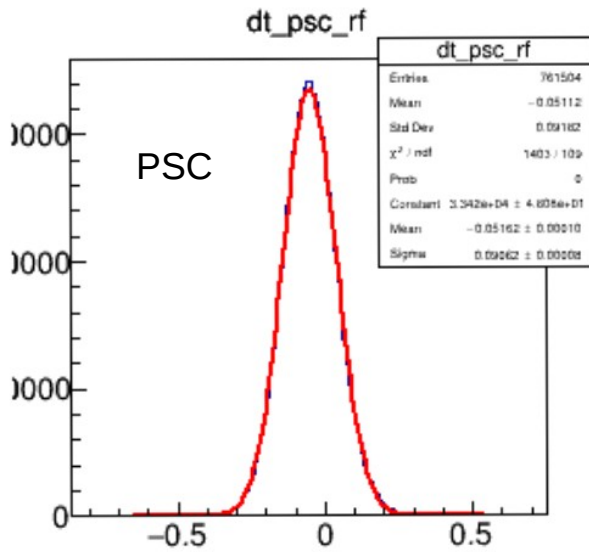


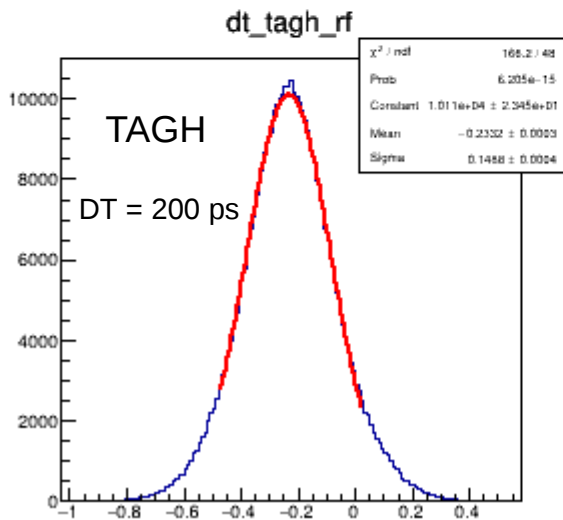
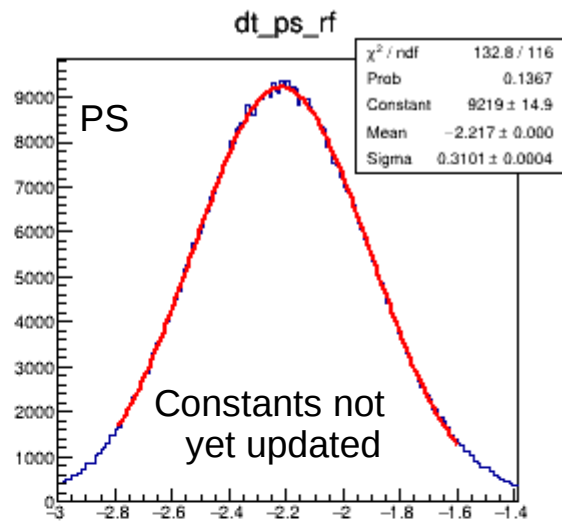
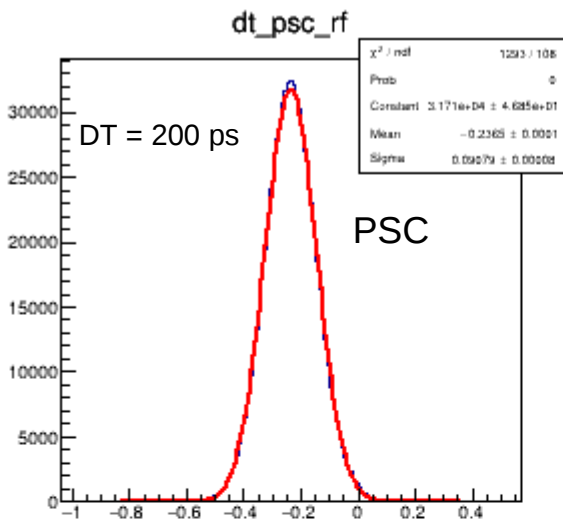
Relative time between sub-detectors (with respect to RF)



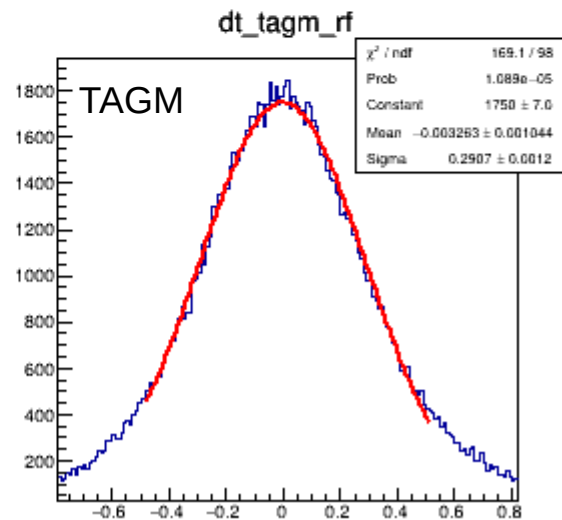
T(TAGH) - T(RF) (ns)

T(TAGM) - T(RF) (ns)

Relative time between sub-detectors (with respect to RF)

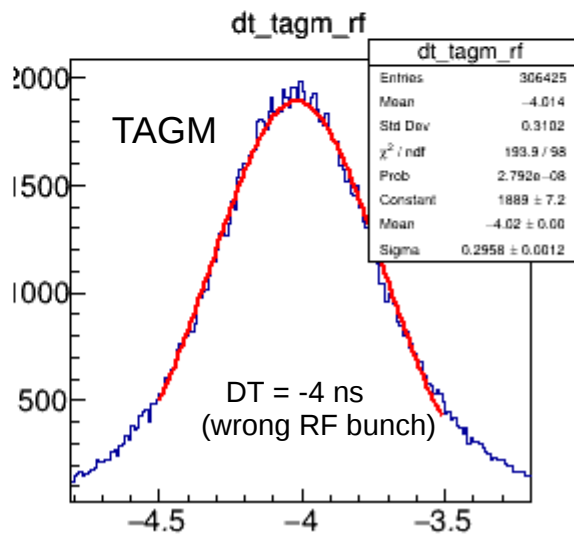
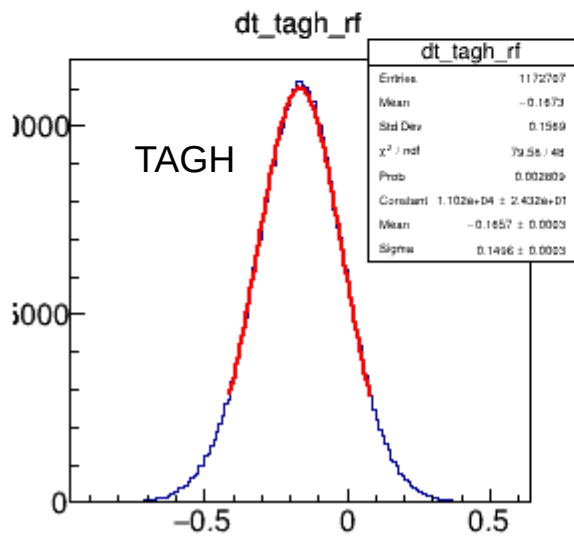
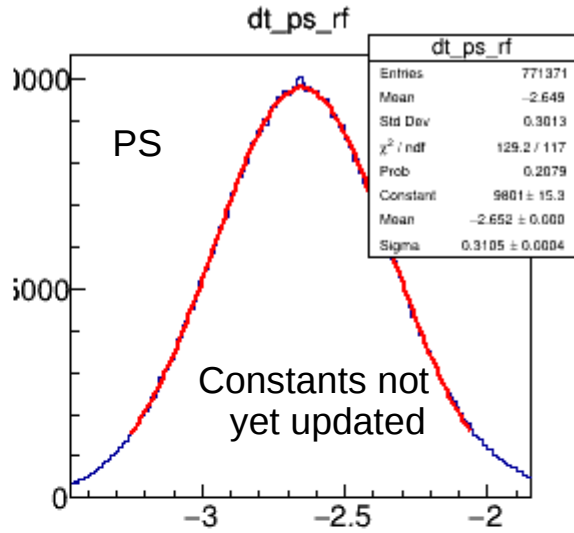
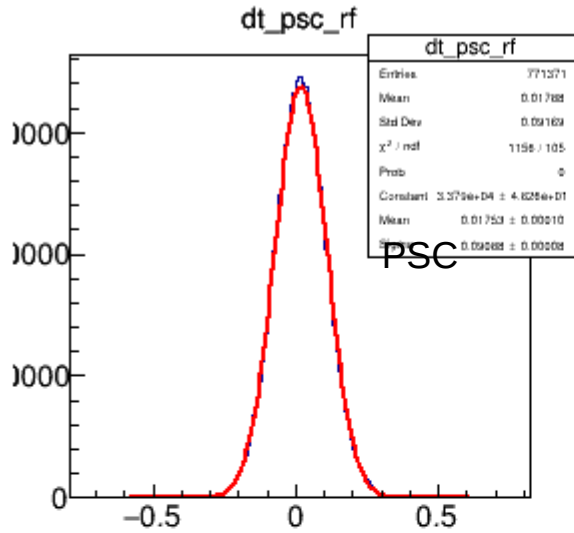


T(TAGH) - T(RF) (ns)



T(TAGM) - T(RF) (ns)

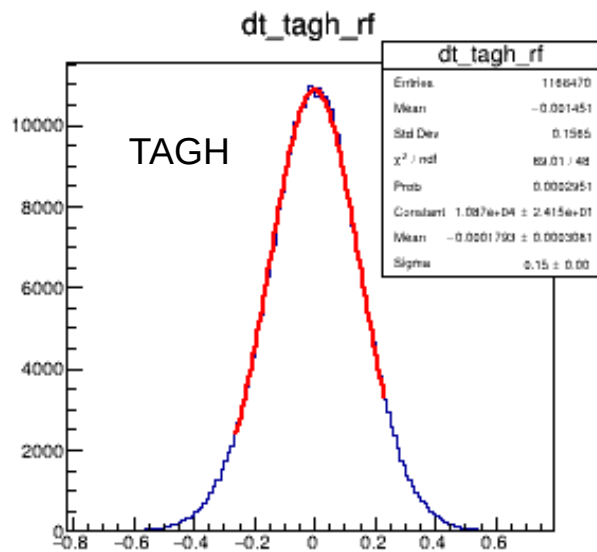
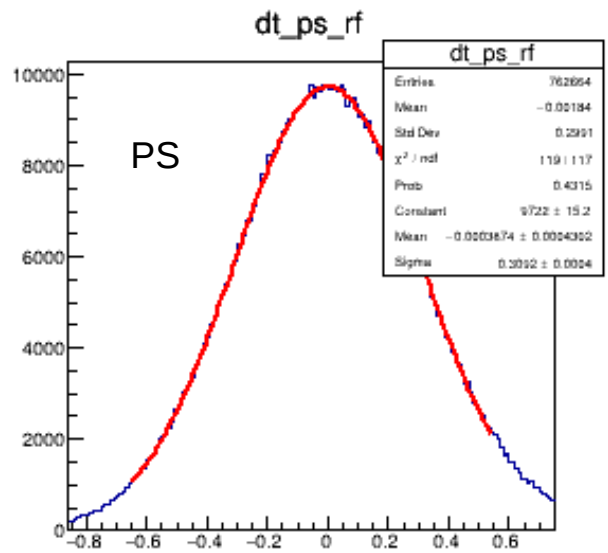
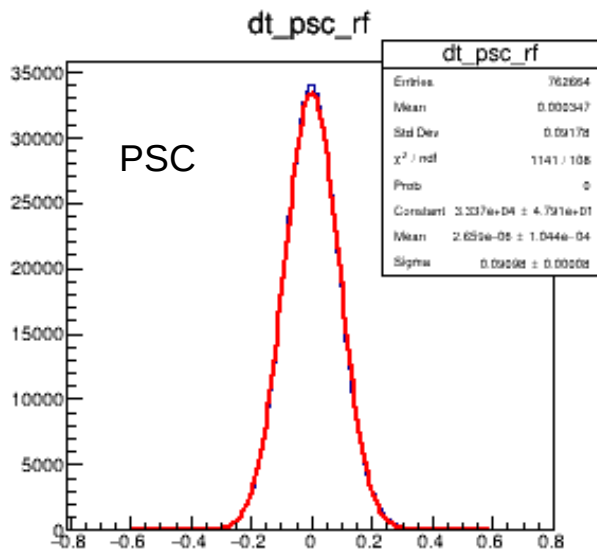
Relative time between sub-detectors (with respect to RF)



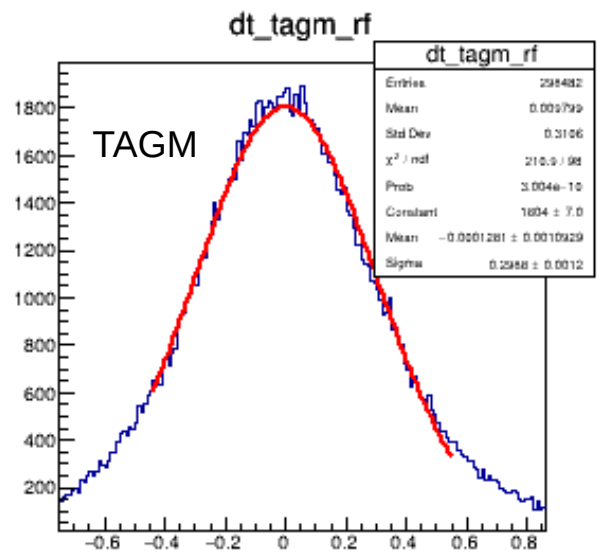
T(TAGH) - T(RF) (ns)

T(TAGM) - T(RF) (ns)

Run 61655 After Time Calibration



T(TAGH) - T(RF) (ns)

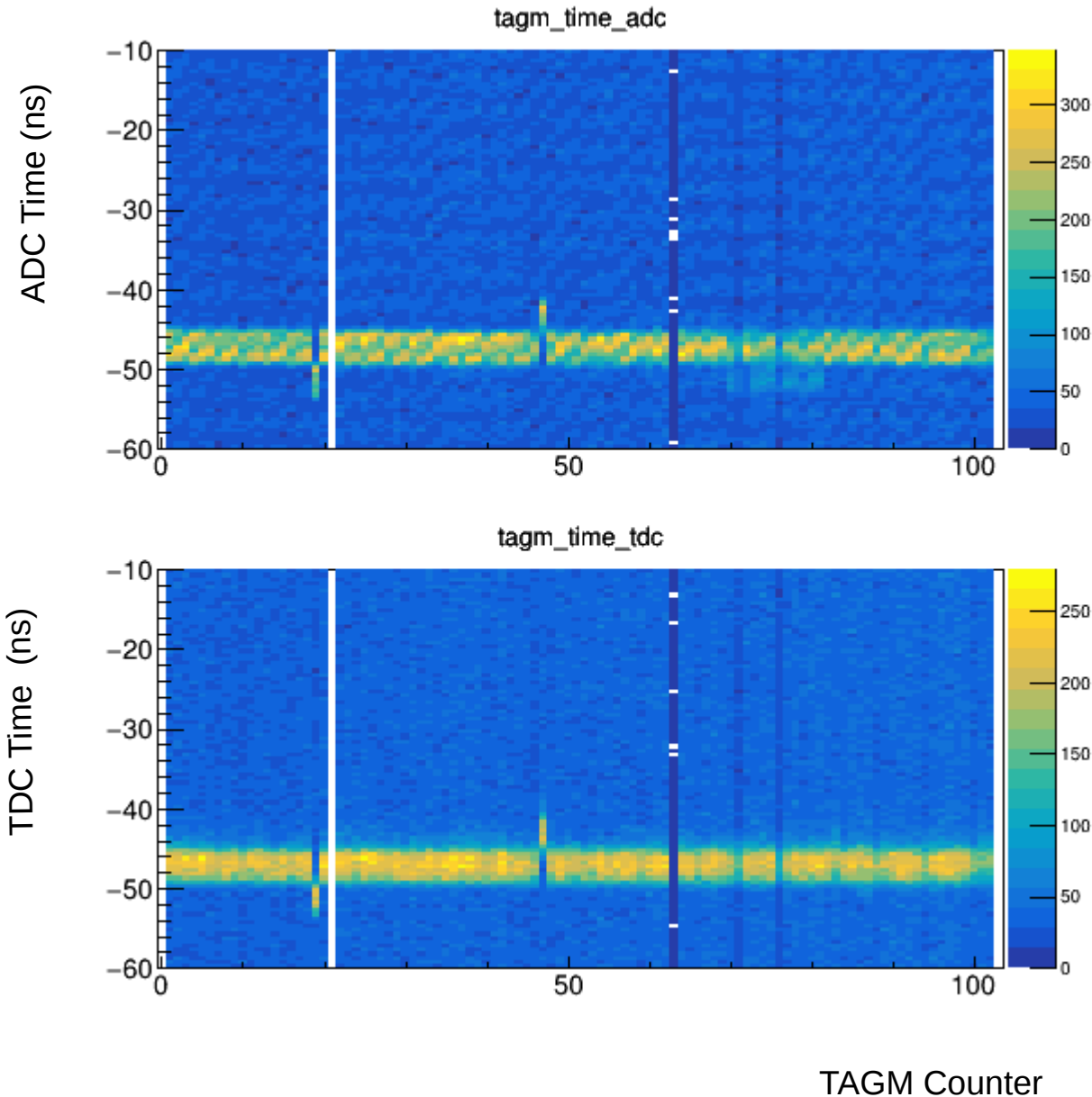


T(TAGM) - T(RF) (ns)

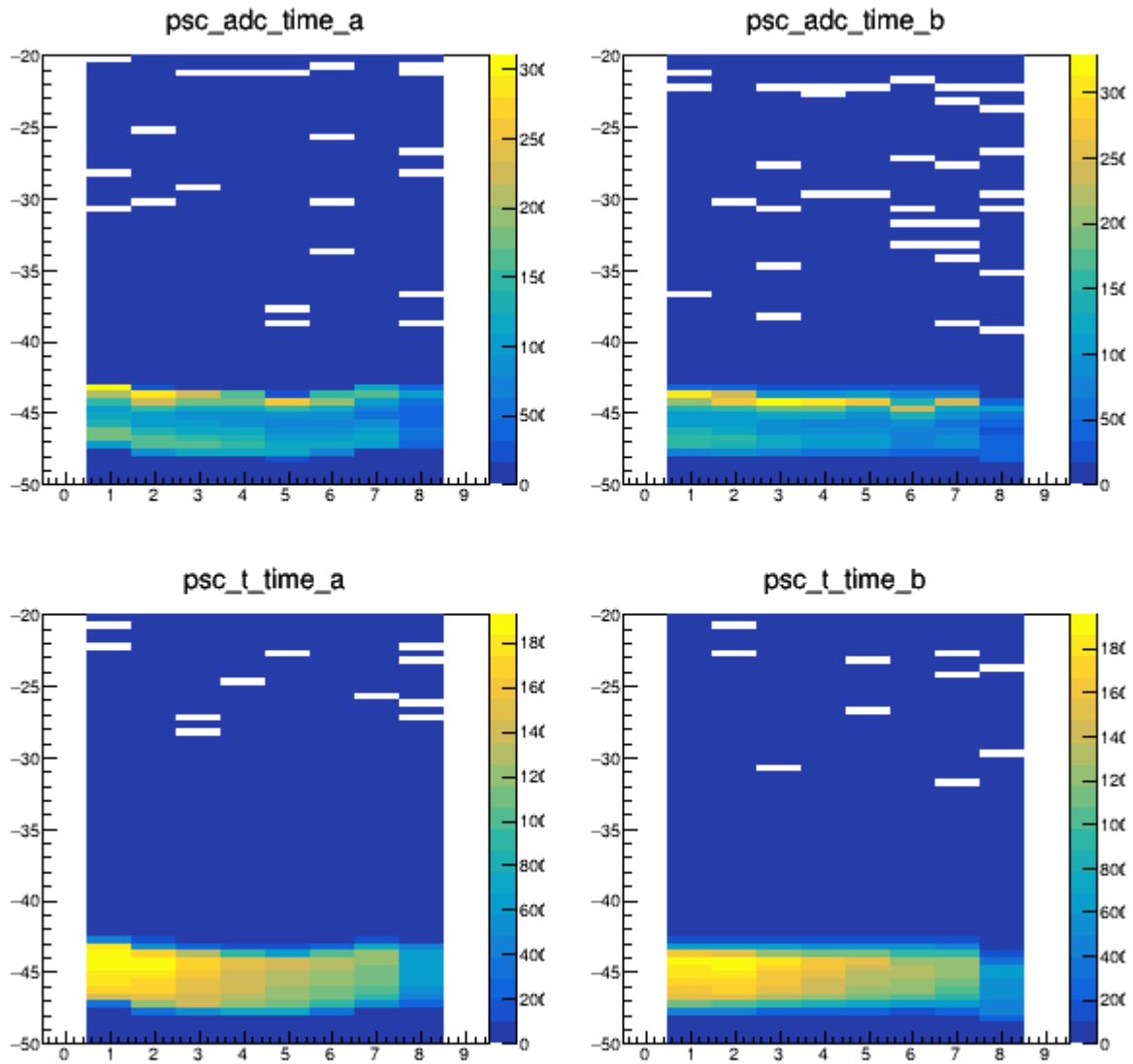
Constants updated in the CCDB
(except empty-target runs)

4 ns time shifts in the TAGM/TAGH

Run 61704



Dozen of runs with a single channel time misalignment



Next Steps:

- re-calibrate PSC
- perform relative time alignment between sub-detectors