

Sasha

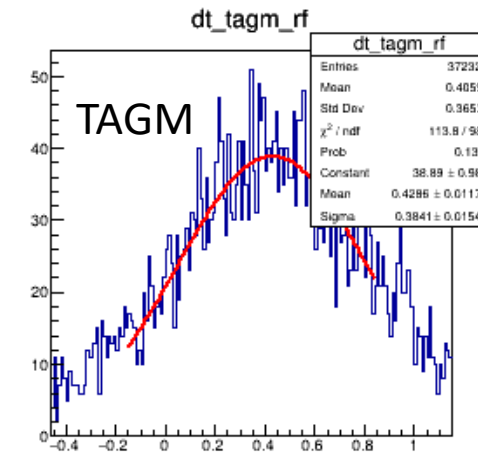
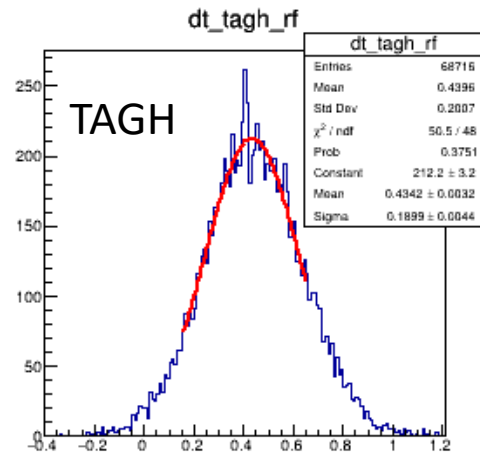
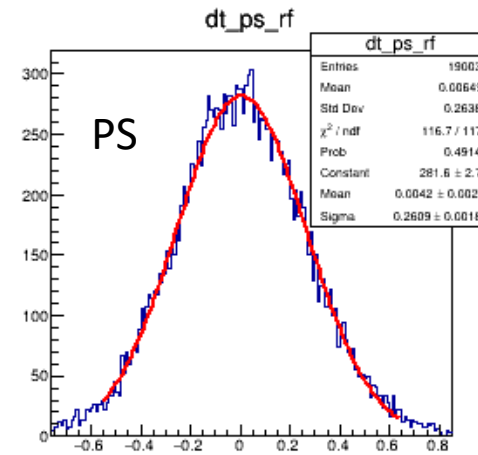
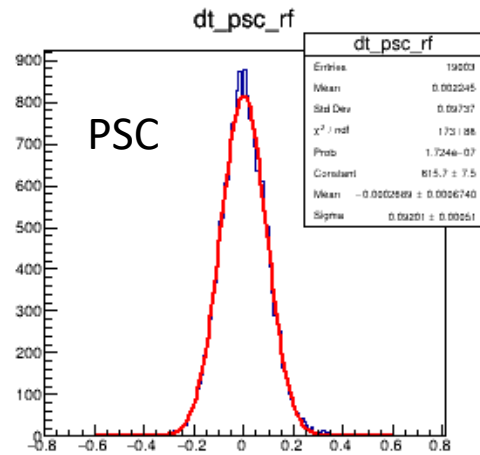
SRC meeting, 3/7/22

Adjustment of Tagger Time

- Calibration of the RF time
- Adjustment of global TAGH timing offsets
- Time calibration of individual channels

PS and Tagger Times

PSC FR



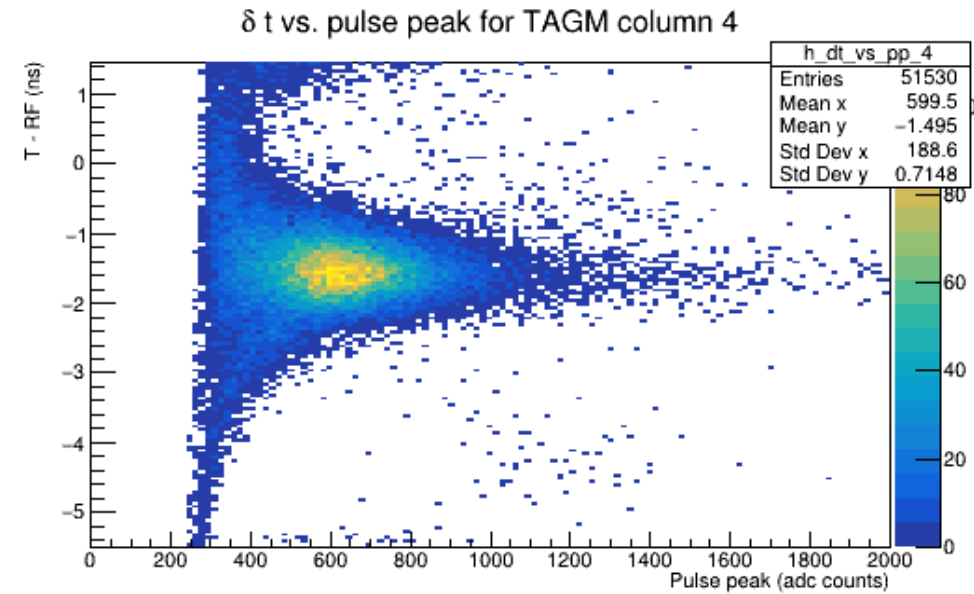
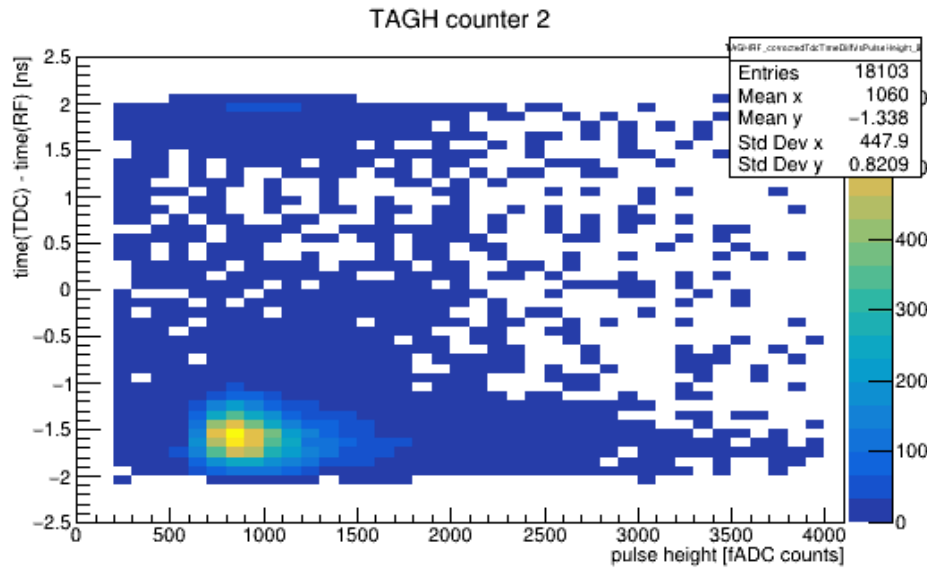
- PSC RF is used as reference
- TAGH & TAGM are shifted by 0.4 ns

TAGM after time adjustment by Bo

T (DET) - T (RF)

Tagger Times

TAGH FR

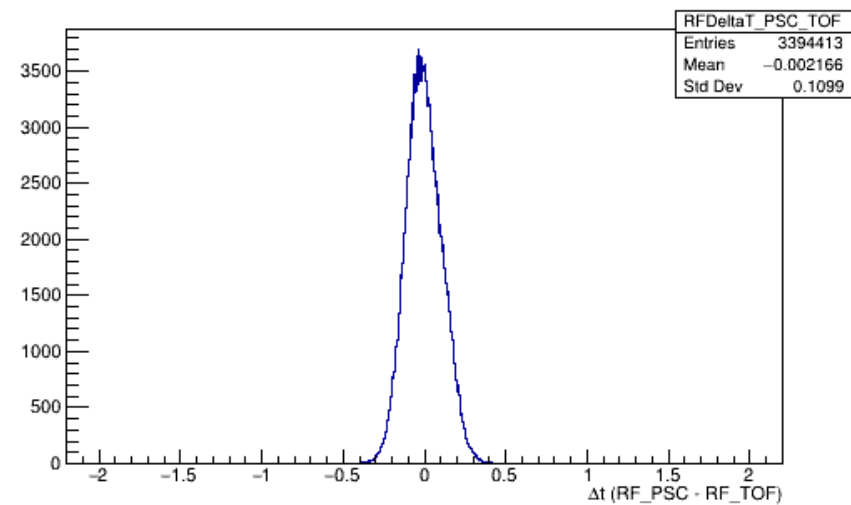
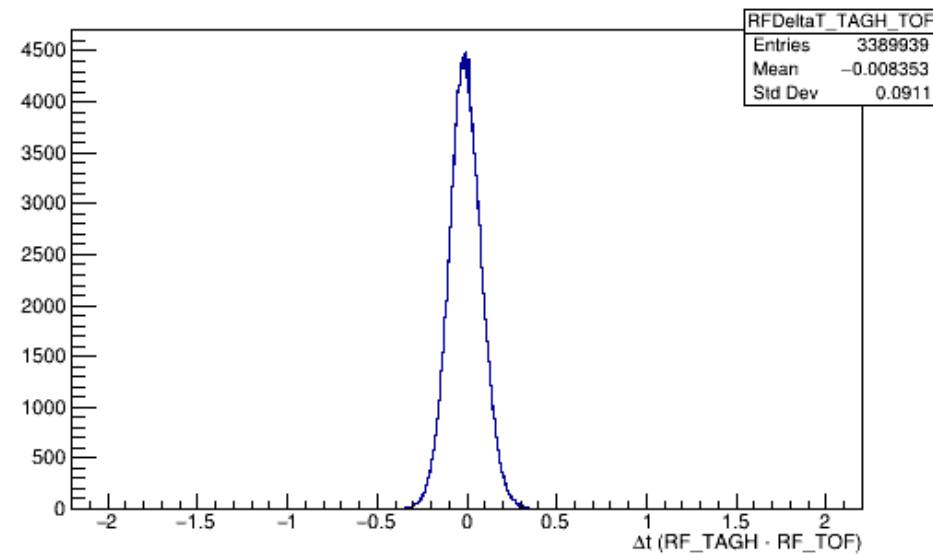
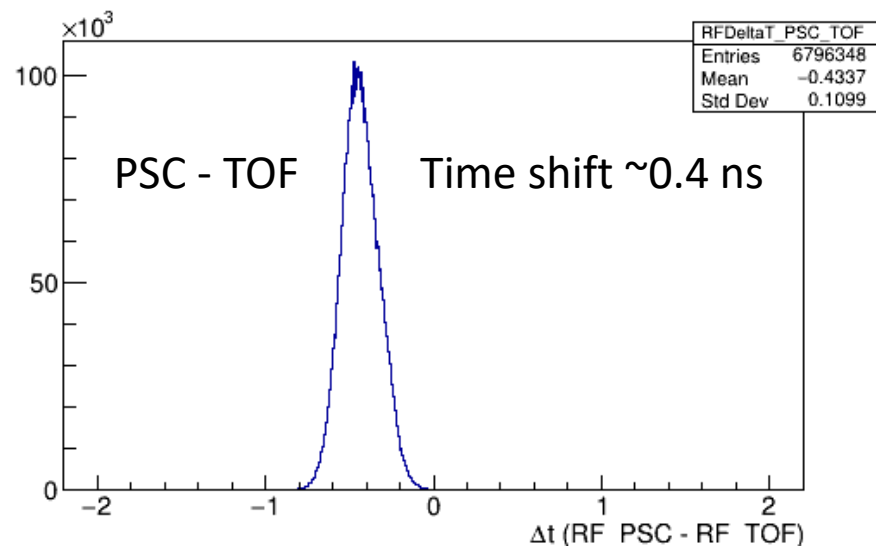
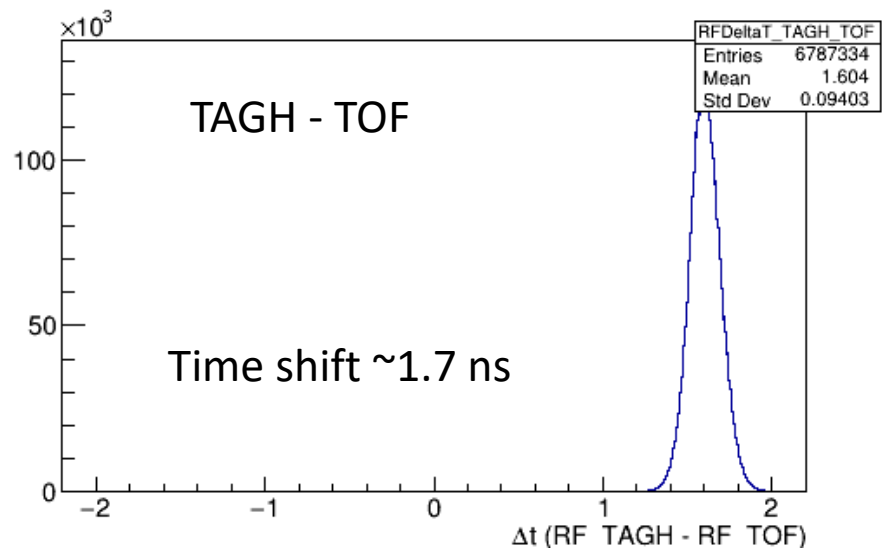


- PS RF is used as reference
- TAGH & TAGM are shifted by about 1.8 ns

Before Calibration

RF Times

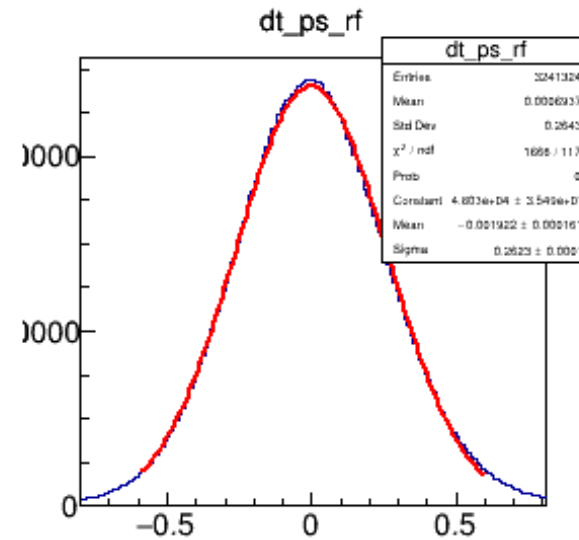
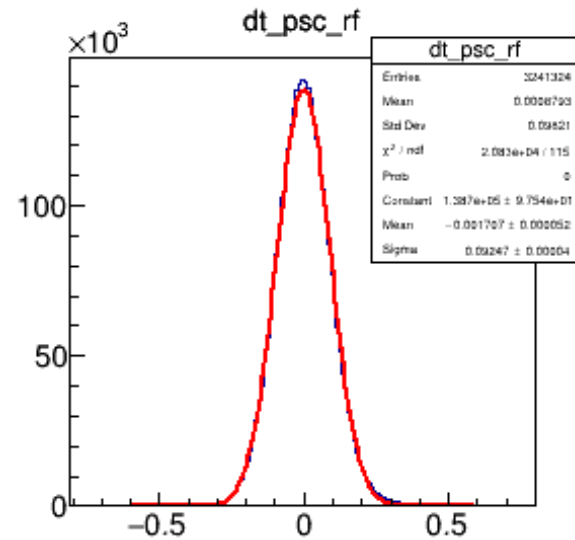
After Calibration



Adjustment of TAGH global time offsets

Run 90252

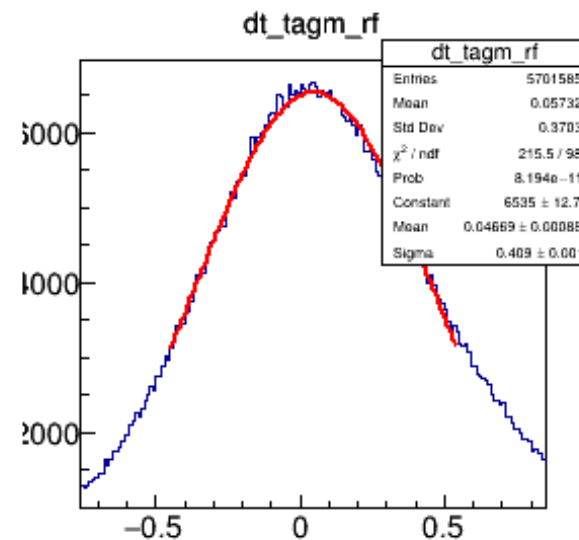
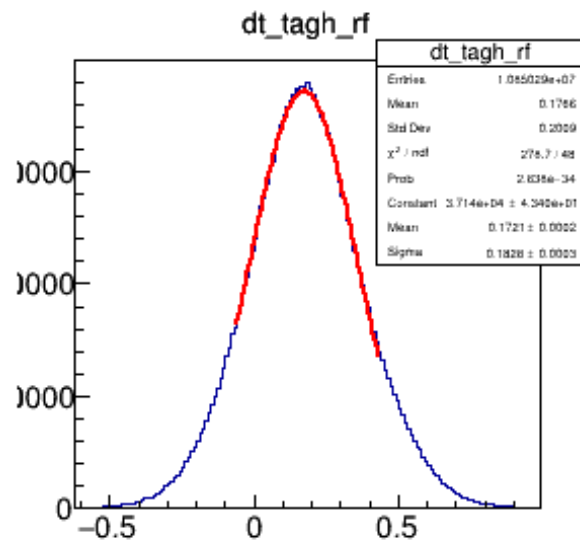
PSC FR



- PS, PSC, and TAGM times are well aligned

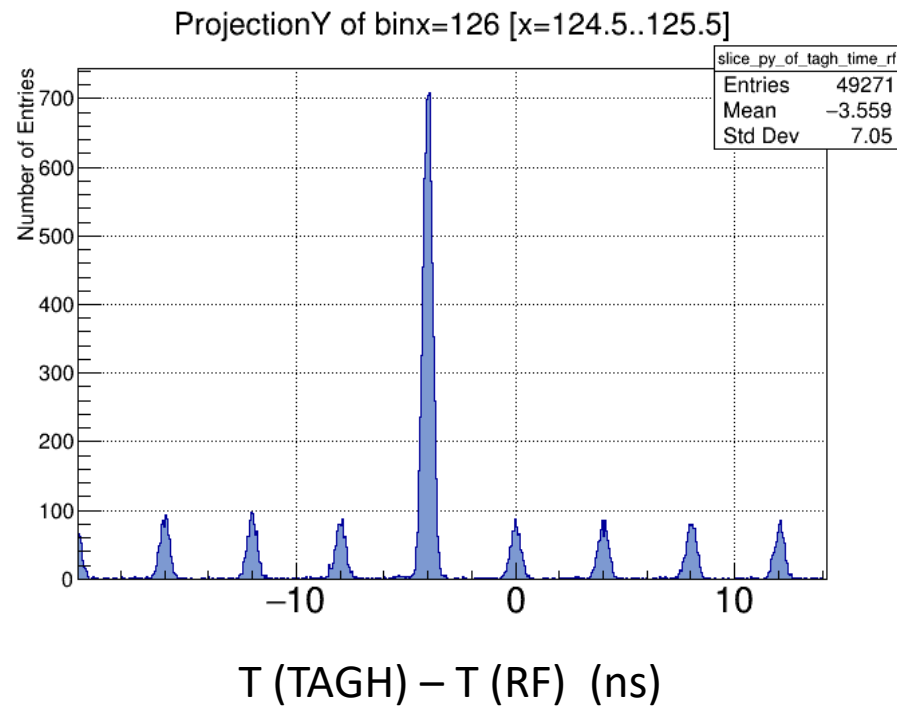
- TAGH time is shifted by 0.2 ns

TAGH
Shift by 0.2 ns

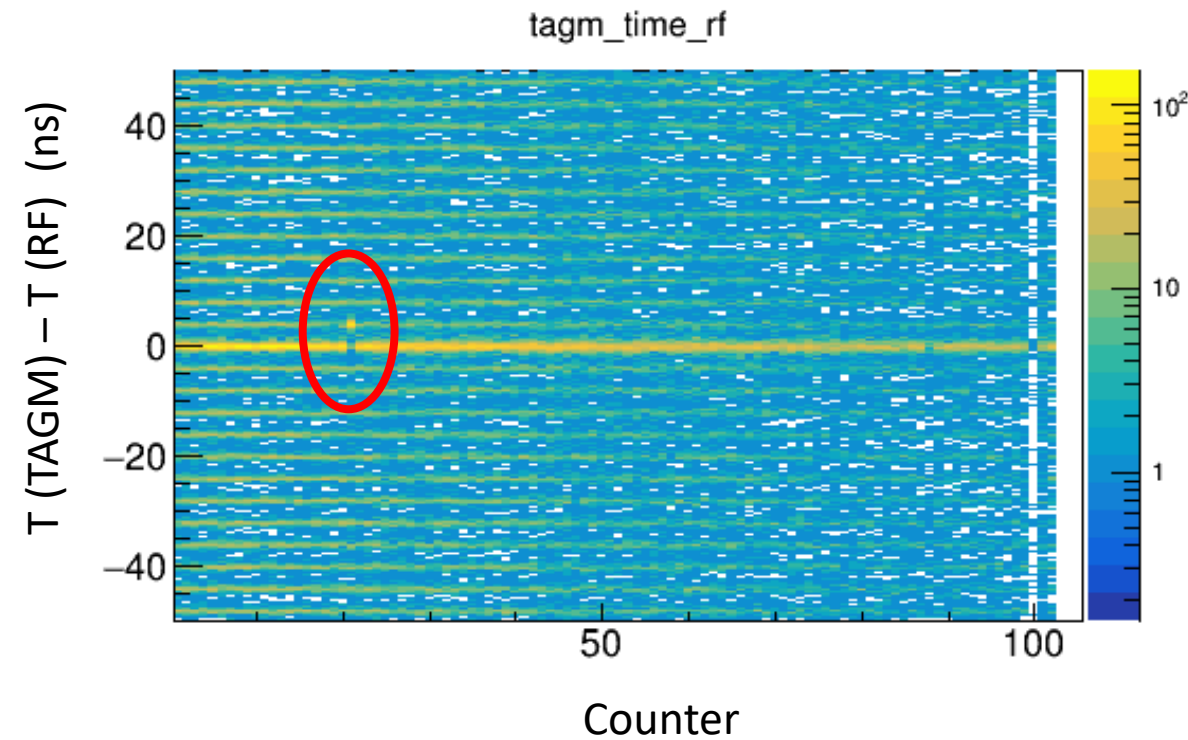


Individual Offsets

TAGH channels: 5 (8 ns), 125 (4 ns), 186 (4 ns)



TAGM channel 21 (4 ns)



- Both ADC and TDC times are shifted
- Time shift for almost all (491) SRC runs (corrected)