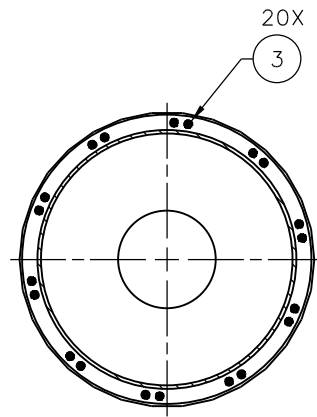
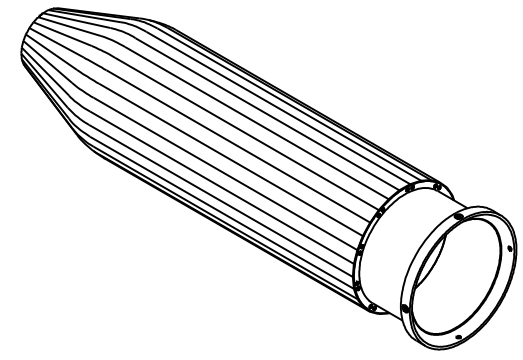


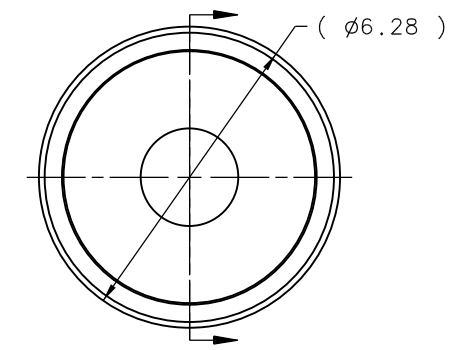
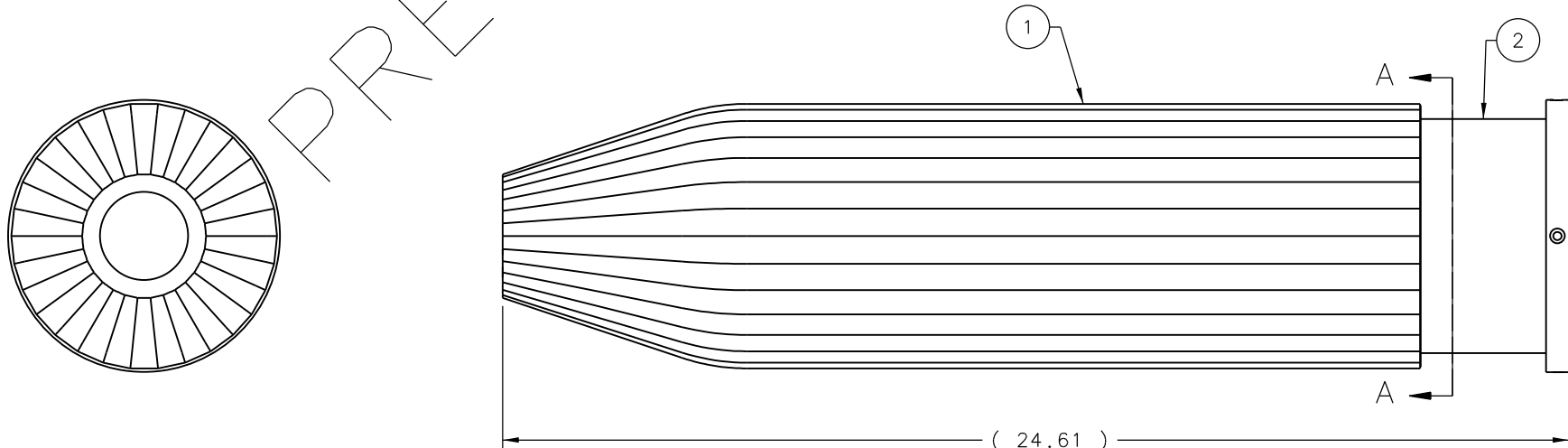
REVISION HISTORY				
ZONE	REV	DESCRIPTION	DATE	APPROVED



SECTION A-A

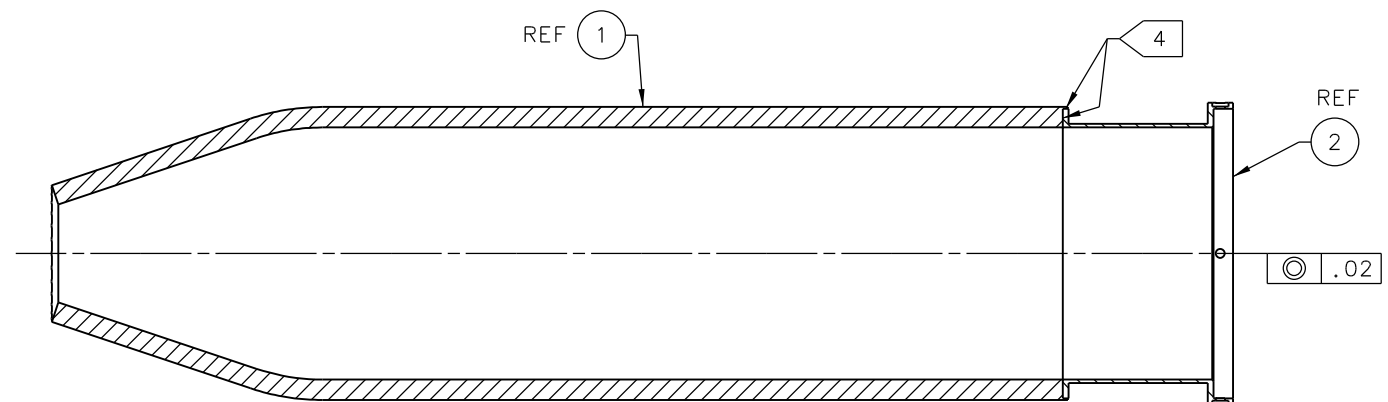


PRELIMINARY



NOTES:

- SUGGESTED SOURCE OR JLAB APPROVED ALTERNATE:
 MCMaster-CARR
 (630)833-0300
 www.mcmaster.com
- GLUE INNER FOAM CONE (ITEM 1) TO FOAM CONE RING (ITEM 2) USING ITEM 4 WHERE SHOWN.



SECTION B-B

QTY REQD	ITEM NO.	PART OR IDENTIFYING NO.	NOMENCLATURE OR DESCRIPTION	MATERIAL SPECIFICATION	NOTES
AR	4		GLUE OR EPOXY		2
20	3	MCMaster-CARR #91732A005	#4-48 HELICAL INSERT	18-8 SS	1
1	2	D00000-01-01-2002	FOAM CONE RING		2
1	1	D00000-01-01-2001	INNER FOAM CONE		2

DOCUMENT CONTROL STAMP	DIM & TOL PER ASME Y14.5 UNLESS OTHERWISE SPECIFIED DIMENSIONS ARE IN INCHES TOLERANCES ARE: FRACTIONS DECIMAL ANGLES ± N/A .X ± .1 .XX ± .01 .XXX ± .005 ± .50°	TRACKING NO. N/A		United States Department of Energy Jefferson Lab Thomas Jefferson National Accelerator Facility Newport News Virginia
		APPROVALS	DATE	
MATERIAL SEE PARTS LIST	THIRD ANGLE PROJECTION	DRAWN C L HUTTON	23JAN13	HALL D - GLUEX DETECTOR START COUNTER FOAM CONE ASSEMBLY SIZE DWG. NO. D00000-01-01-1001 SCALE 1/2 USED ON ASSY NO. D00000-01-01-0000 SHEET 1 OF 1
FINISH MACHINED SURFACES DEBURR & BREAK ALL SHARP EDGES	125 UNLESS OTHERWISE NOTED	CHECKED	APPROVED	
DO NOT SCALE DRAWING		APPROVED		REV. -