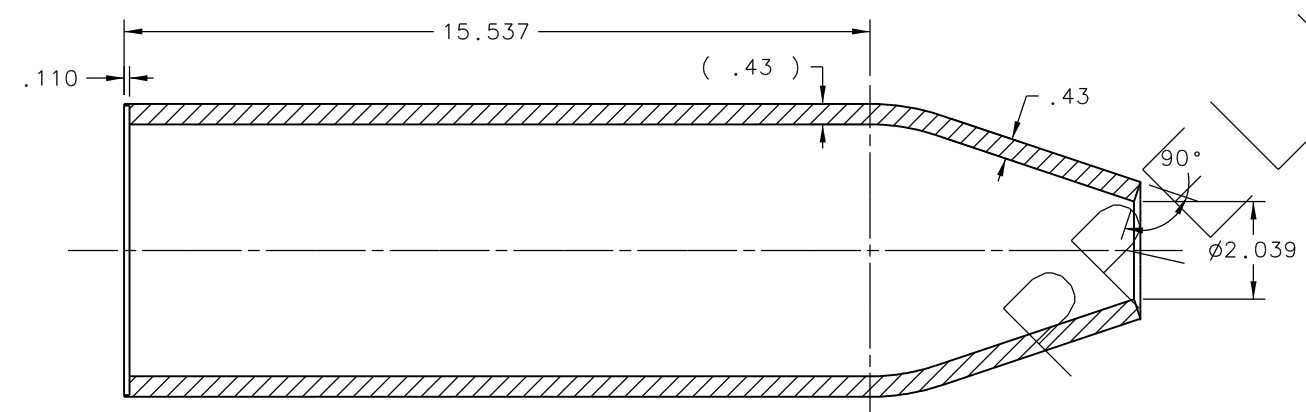
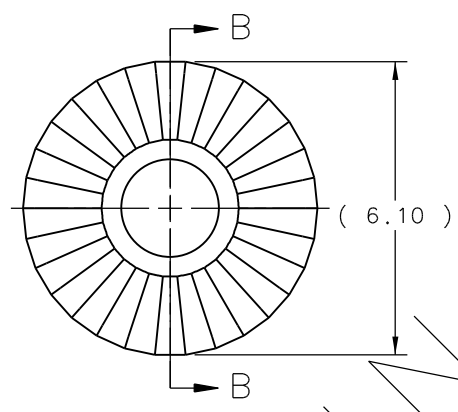
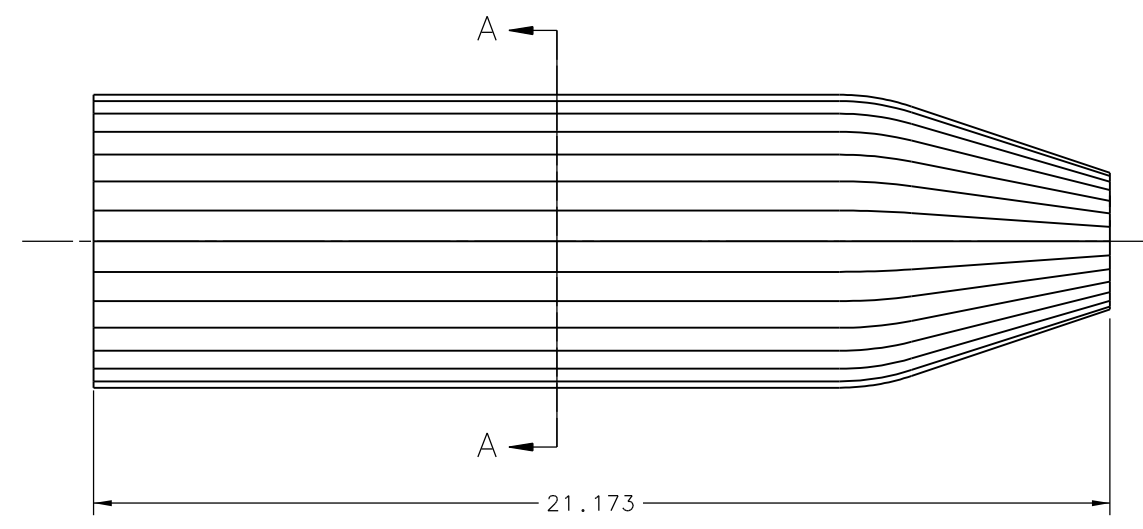
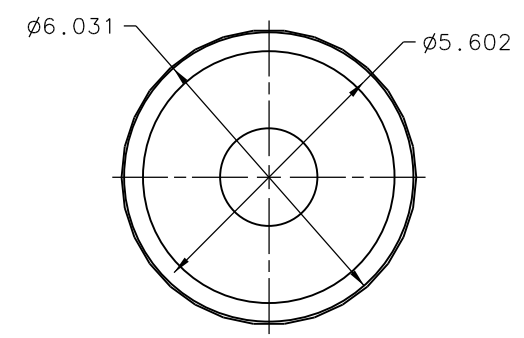
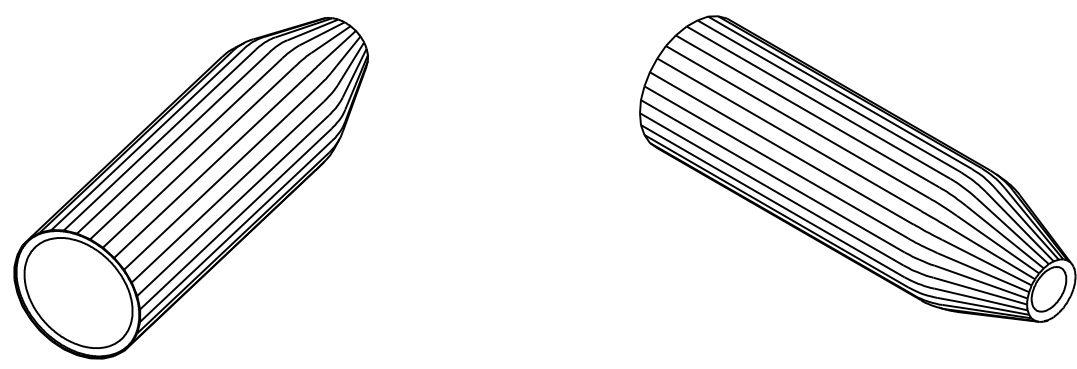
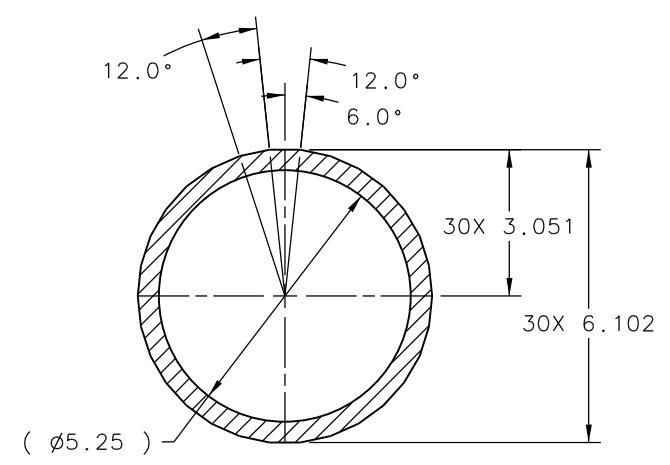


REVISION HISTORY				
ZONE	REV	DESCRIPTION	DATE	APPROVED



SECTION B-B



SECTION A-A

IMMINARLY

- NOTES:
- SUGGESTED SOURCES OR JLAB APPROVED ALTERNATE:  
GENERAL PLASTICS MANUFACTURING CO.  
(800) 806-6051  
www.generalplastics.com
  - SHEETS OF ITEM 1 MAY BE GLUED TOGETHER USING ITEM 2 TO ACCOMMODATE THICKNESS PRIOR TO MACHINING.

QTY REQD	ITEM NO.	PART OR IDENTIFYING NO.	NOMENCLATURE OR DESCRIPTION	MATERIAL SPECIFICATION	NOTES
AR	2	*	*	*	*
1	1	GENERAL PLASTICS #	LAST-A-FOAM	*	1 & 2

DOCUMENT CONTROL STAMP	DIM & TOL PER ASME Y14.5 UNLESS OTHERWISE SPECIFIED DIMENSIONS ARE IN INCHES TOLERANCES ARE:	TRACKING NO.	United States Department of Energy
	FRACTIONS DECIMAL ANGLES ± N/A .X ± .1 ± .50° .XX ± .01 .XXX ± .005	N/A	<b>Jefferson Lab</b> Thomas Jefferson National Accelerator Facility Newport News Virginia
MATERIAL SEE PARTS LIST	THIRD ANGLE PROJECTION	APPROVALS DRAWN C L HUTTON CHECKED	HALL D - GLUEX DETECTOR START COUNTER INNER FOAM CONE
FINISH MACHINED SURFACES DEBURR & BREAK ALL SHARP EDGES	125 UNLESS OTHERWISE NOTED	APPROVED	DATE 14JAN13
DO NOT SCALE DRAWING		APPROVED	SIZE DWG. NO. D D00000-01-01-2001
			SCALE 1/2 USED ON ASSY NO. D00000-01-01-1001 SHEET 1 OF 1