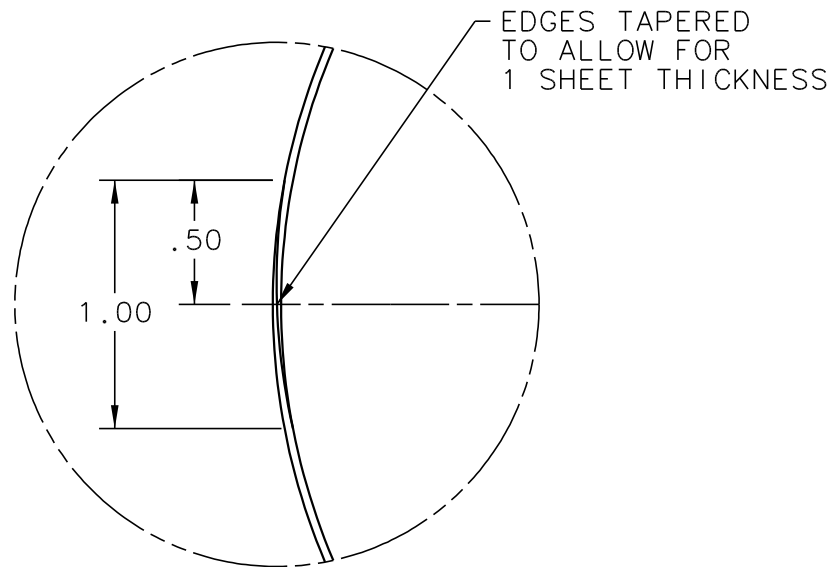
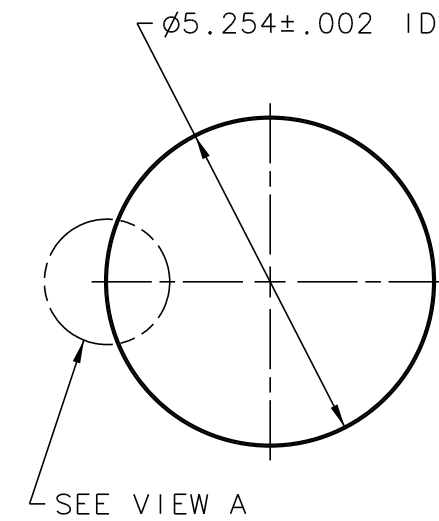
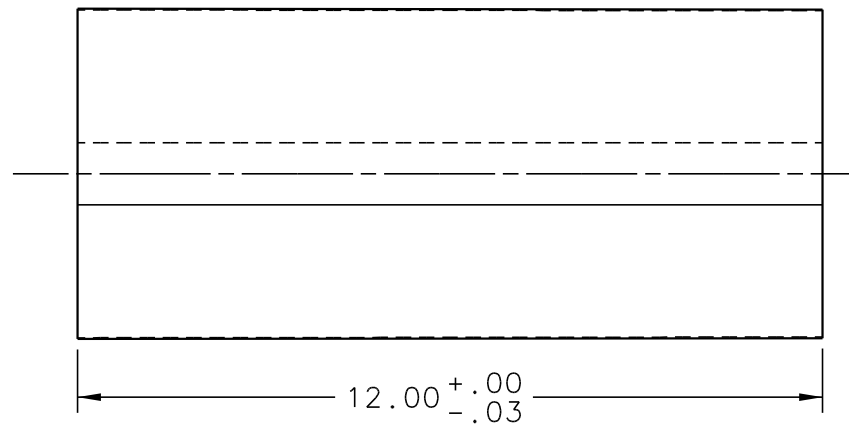
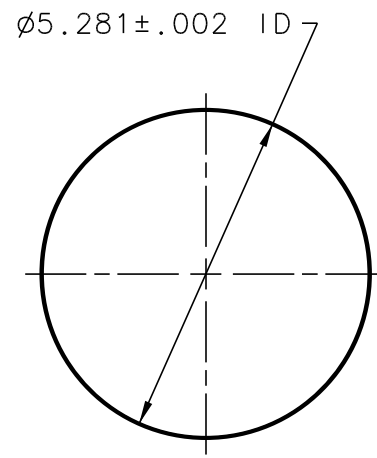
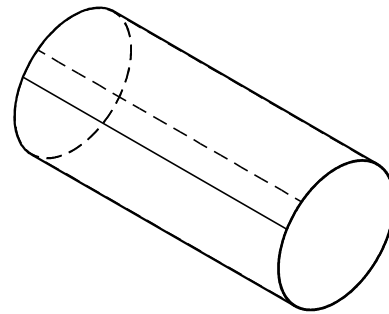


REVISION HISTORY				
ZONE	REV	DESCRIPTION	DATE	APPROVED



VIEW A
SCALE: 2/1



NOTES:

- PERFORM GLUING EDGES OF THE SHELL BY 3M SCOTCH-WELD EPOXY ADHESIVE 2216 B/A, TWO PARTS, THICKNESS OF GLUE LAYER SHOULD BE EQUAL .005"-.010".

DOCUMENT CONTROL STAMP	DIM & TOL PER ASME Y14.5 . UNLESS OTHERWISE SPECIFIED DIMENSIONS ARE IN INCHES TOLERANCES ARE: FRACTIONS DECIMAL ANGLES ± N/A .X ± .1 ± .50° .XX ± .01 .XXX ± .005	TRACKING NO. N/A		United States Department of Energy Jefferson Lab Thomas Jefferson National Accelerator Facility Newport News Virginia
		APPROVALS	DATE	
MATERIAL CARBON FIBER SHEET .5mm THK	THIRD ANGLE PROJECTION	DRAWN C HUTTON	18SEP13	HALL D - GLUEX DETECTORS START COUNTER FOAM CORE CARBON FIBER TUBE
FINISH MACHINED SURFACES 125 UNLESS OTHERWISE NOTED DEBURR & BREAK ALL SHARP EDGES		CHECKED		
DO NOT SCALE DRAWING		APPROVED		SIZE DWG. NO. C D00000-01-01-2004
		APPROVED		SCALE 1/2 USED ON ASSY NO. D00000-01-01-1000 SHEET 1 OF 1