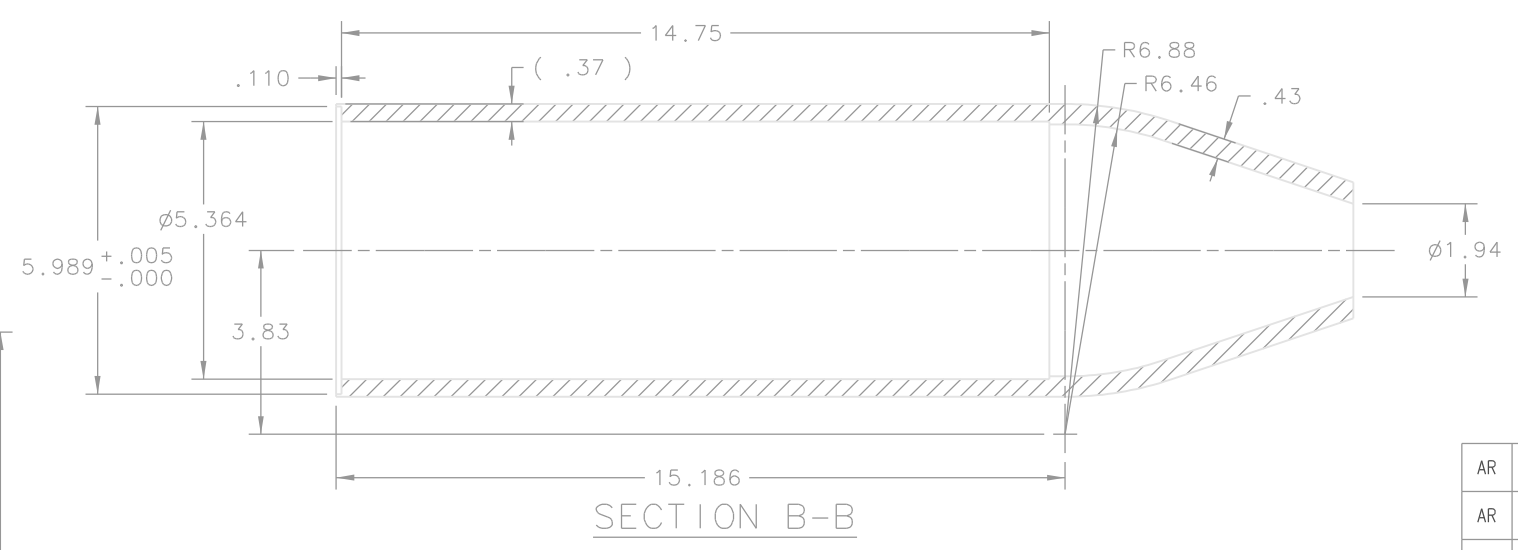
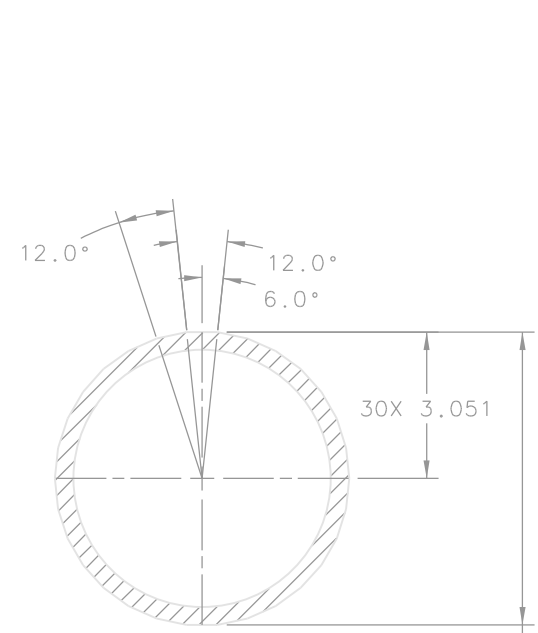
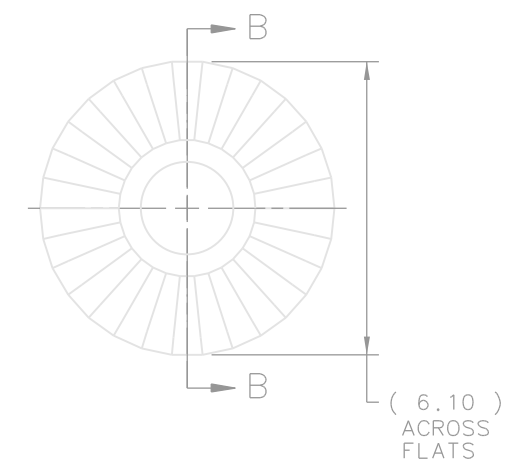
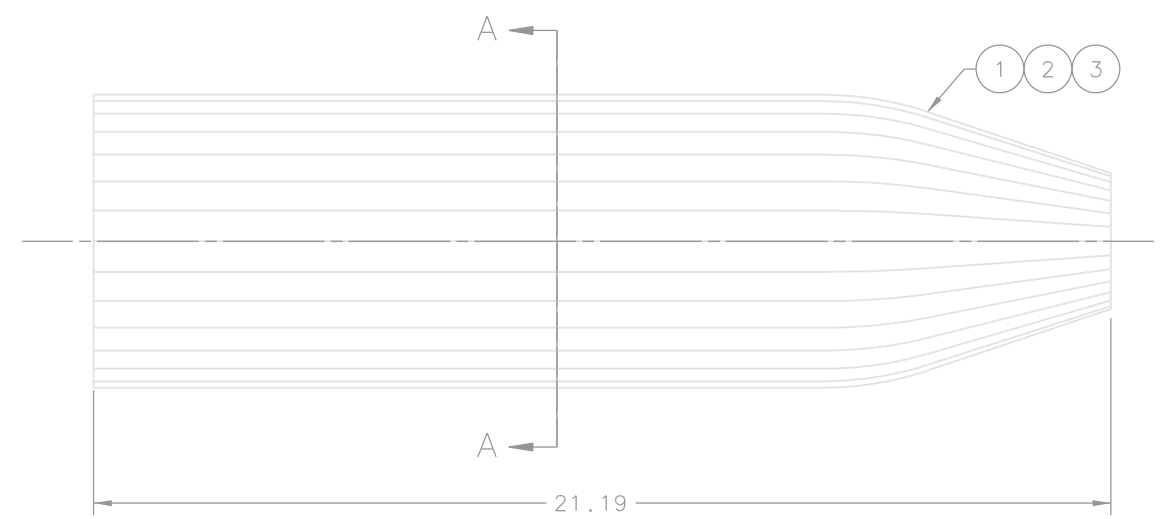
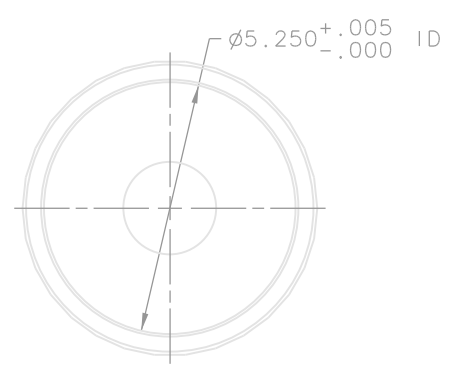
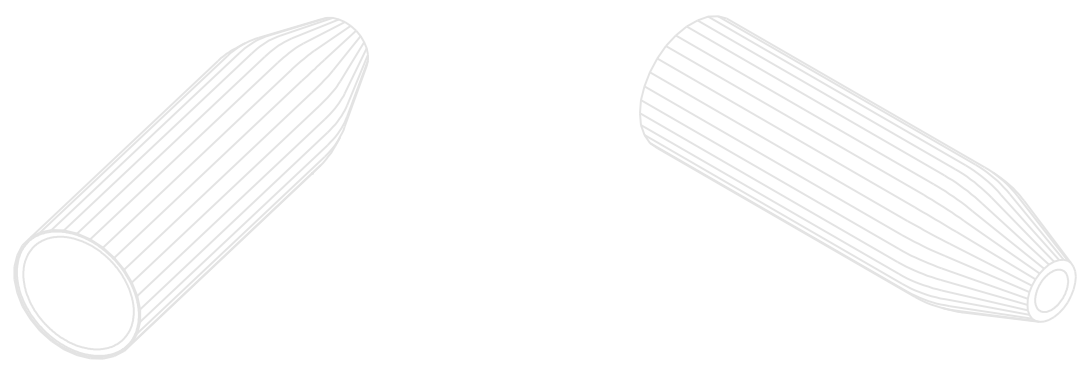


REVISION HISTORY				
ZONE	REV	DESCRIPTION	DATE	APPROVED



- NOTES:
- SUGGESTED SOURCES OR JLAB APPROVED ALTERNATE:
EVONIK FOAMS, INC.
(866) 764-6235
www.evonik.com
 - PIECES OF ITEM 1 MAY BE GLUED TOGETHER USING ITEMS 2 & 3 TO ACCOMMODATE THICKNESS PRIOR TO MACHINING.
 - AFTER FINAL MACHINING, SAW CUT IN HALF FROM CORNER TO CORNER INTO 2 EVEN HALVES.

QTY REQD	ITEM NO.	PART OR IDENTIFYING NO.	NOMENCLATURE OR DESCRIPTION	MATERIAL SPECIFICATION	NOTES
AR	3	WEST SYSTEM 410	LOW DENSITY FILLER		2
AR	2	WEST SYSTEM 105 & 205	EPOXY		2
1	1	EVONIK FOAMS #711G	ROHACELL, 3.94 THK	ROHACELL, 711G	1 & 2

DOCUMENT CONTROL STAMP	DIM & TOL PER ASME Y14.5 UNLESS OTHERWISE SPECIFIED DIMENSIONS ARE IN INCHES TOLERANCES ARE: FRACTIONS DECIMAL ANGLES \pm N/A .XX \pm .01 .XXX \pm .005 \pm .10°	TRACKING NO. N/A		United States Department of Energy Jefferson Lab Thomas Jefferson National Accelerator Facility Newport News Virginia
		APPROVALS	DATE	
MATERIAL SEE PARTS LIST	THIRD ANGLE PROJECTION	DRAWN C L HUTTON	14JAN13	HALL D - GLUEX DETECTORS START COUNTER INNER FOAM CONE
FINISH MACHINED SURFACES DEBURR & BREAK ALL SHARP EDGES	125 UNLESS OTHERWISE NOTED	APPROVED		SIZE DWG. NO. D D00000-01-01-2001
DO NOT SCALE DRAWING		APPROVED		SCALE 1/2 USED ON ASSY NO. D00000-01-01-1001 SHEET 1 OF 1

D

D

C

C

B

B

A

A

8

7

6

5

4

3

2

1