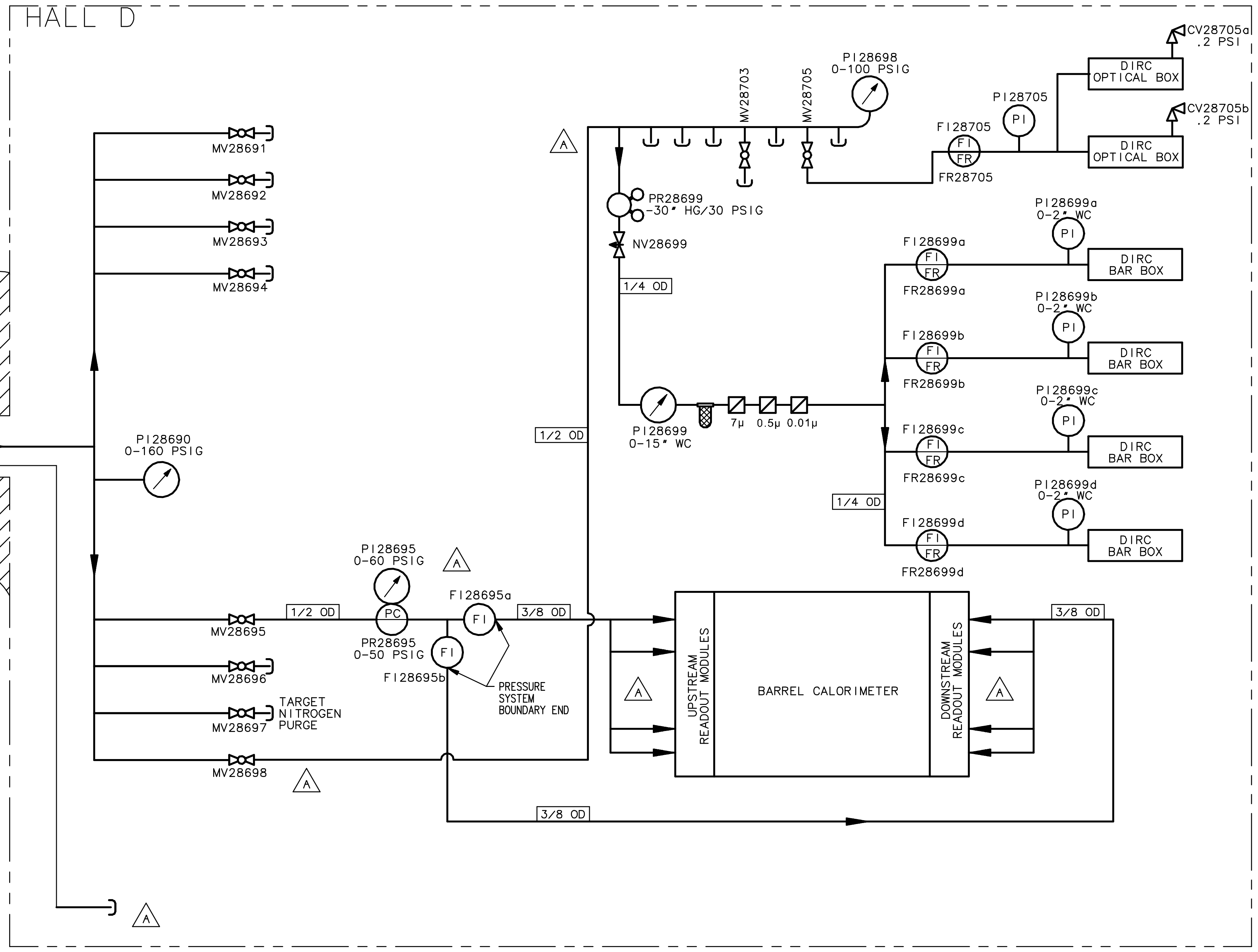


REVISION HISTORY				
ZONE	REV	DESCRIPTION	DATE	APPROVED
B4	A	REVISED LINE TO BARREL CALORIMETER FROM MV28698 TO MV28695.	10/2017	T. WHITLATCH
A5-C3		ADDED CALLOUTS FOR FI28695a/b.		
D8		ADDED CALLOUTS FOR DIRC TO MV28698.		
A6		ADDED LEGEND.	10/2017	T. CARSTEN
		REMOVED VENT LINE FROM BARREL CALORIMETER.	SLW 10/2017	

## HALL D NITROGEN PURGE SYSTEM PS-PHY-13-009

LEGEND	
	CHECK VALVE (CV28XXX)
	NEEDLE VALVE (NV28XXX)
	MANUAL VALVE (MV28XXX)
	PRESSURE INDICATOR (PI28XXX)
	OIL/W <sup>2</sup> O (FILTER)
	SINTERED METAL FILTER
	PRESSURE INDICATOR (PI28XXX)
	FLOW INDICATOR (FI28XXX) FLOW REGULATOR (FR28XXX)
	PRESSURE CONTROLLER/REGULATOR (PR28XXX)
	2-STAGE PRESSURE REGULATOR (PR28XXX)



SEE DRAWING 74101-2201 (PRESSURE REGULATED TO UNDER 50PSI)

PRESSURE SYSTEM BOUNDARY START

MV28690 FROM 74701-2201

DOCUMENT CONTROL STAMP	DIM & TOL PER ASME Y14.5 UNLESS OTHERWISE SPECIFIED DIMENSIONS ARE IN INCHES TOLERANCES ARE FRACTIONS DECIMAL ANGLES ± N/A X ± .01 XX ± .01 XXX ± .005	TRACKING NO N/A	United States Department of Energy	Jefferson Lab Thomas Jefferson National Accelerator Facility	Newport News Virginia
MATERIAL N/A	THIRD ANGLE PROJECTION	APPROVALS	DATE	HALL D GLUEX UTILITIES GAS SYSTEMS HALL D NITROGEN P & I DIAGRAM	
FINISH MACHINED SURFACES 125 UNLESS OTHERWISE NOTED DEBURR & BREAK ALL SHARP EDGES		DRAWN R. GETZ	10CT13	SIZE DWG NO D D00000-10-02-5001	REV A
DO NOT SCALE DRAWING		CHECKED M. MARCHLIK		SCALE N/A	SHEET 1 OF 1
		APPROVED M. MARCHLIK			
		APPROVED T. WHITLATCH			