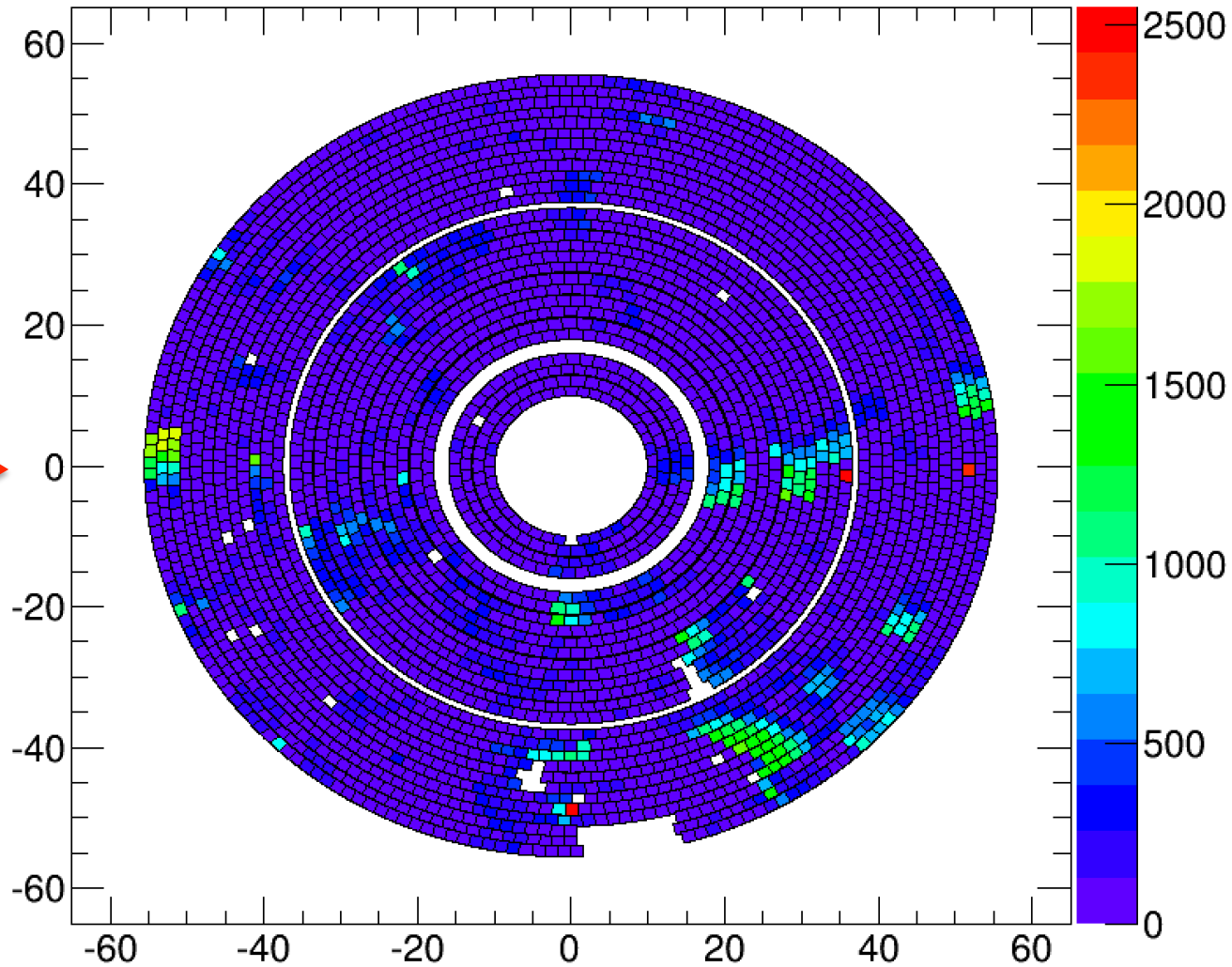


CDC Readout Issues

M. Staib

Returning to a plot from last week

SigmaRange > 20 Width = 20



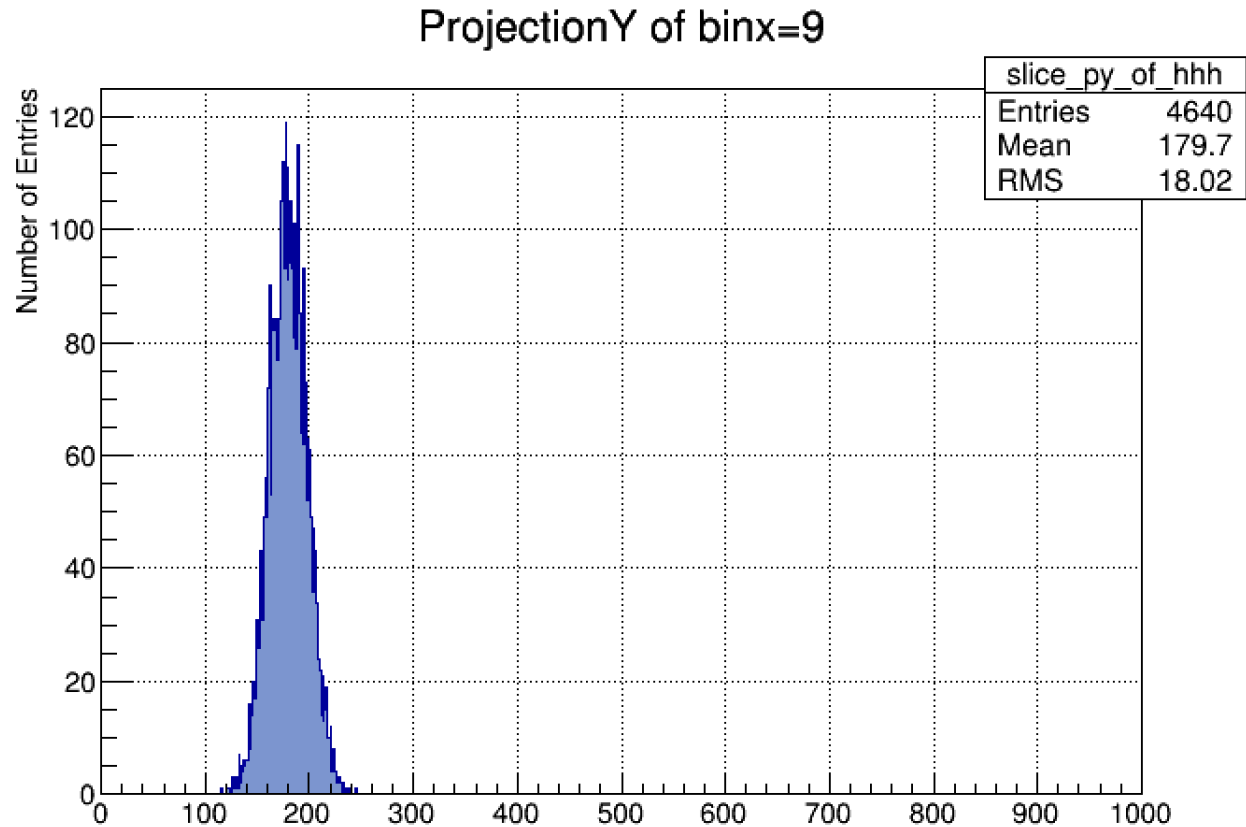
This is the number of events in which there are bursts of noise. 5.5k events total.

“Green” = ~ 25% of events

Looking at CDC from downstream towards upstream

Missing bits

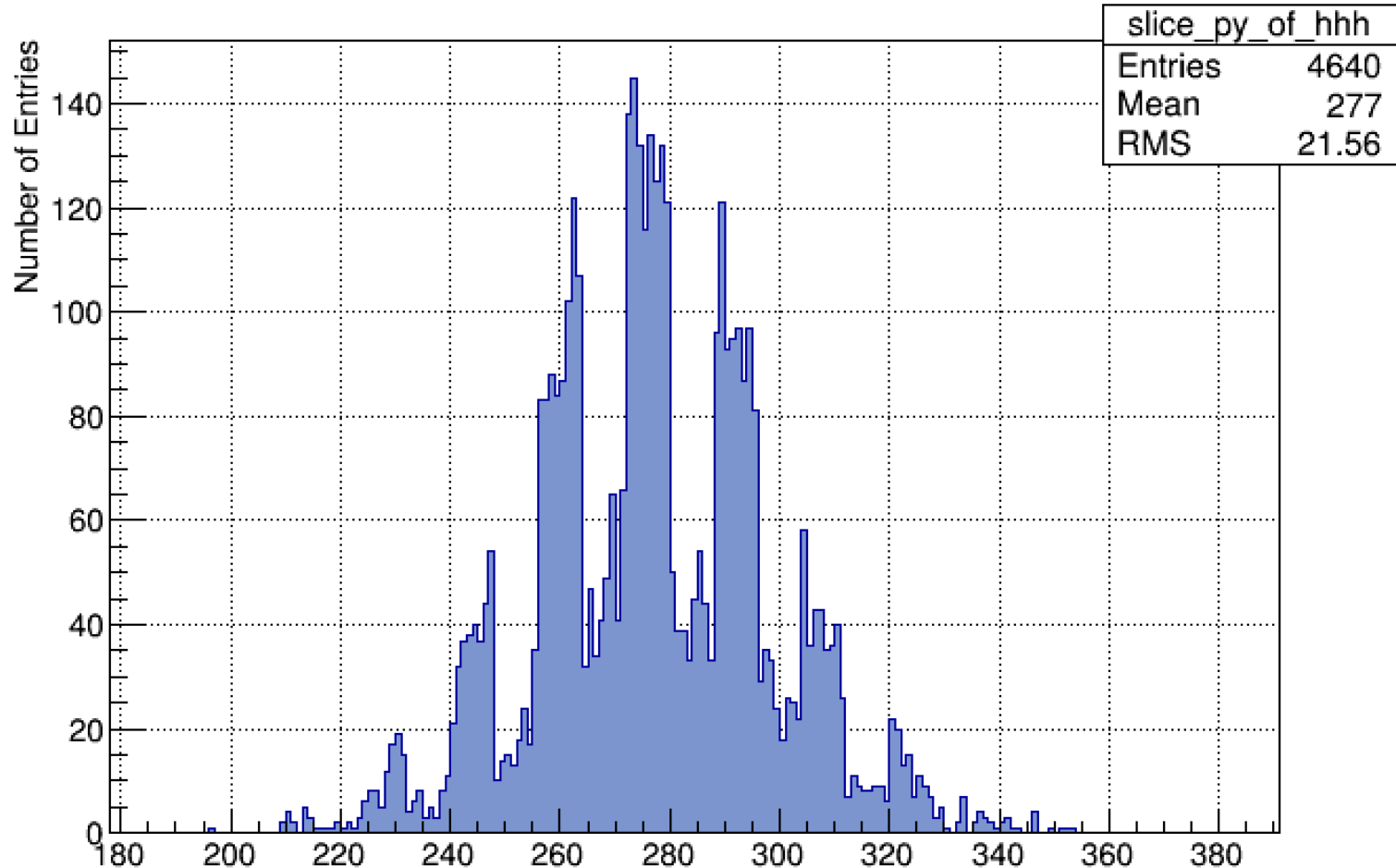
Electronic noise on a typical channel



Missing bits

Electronic noise with a sometimes stuck bit (?):

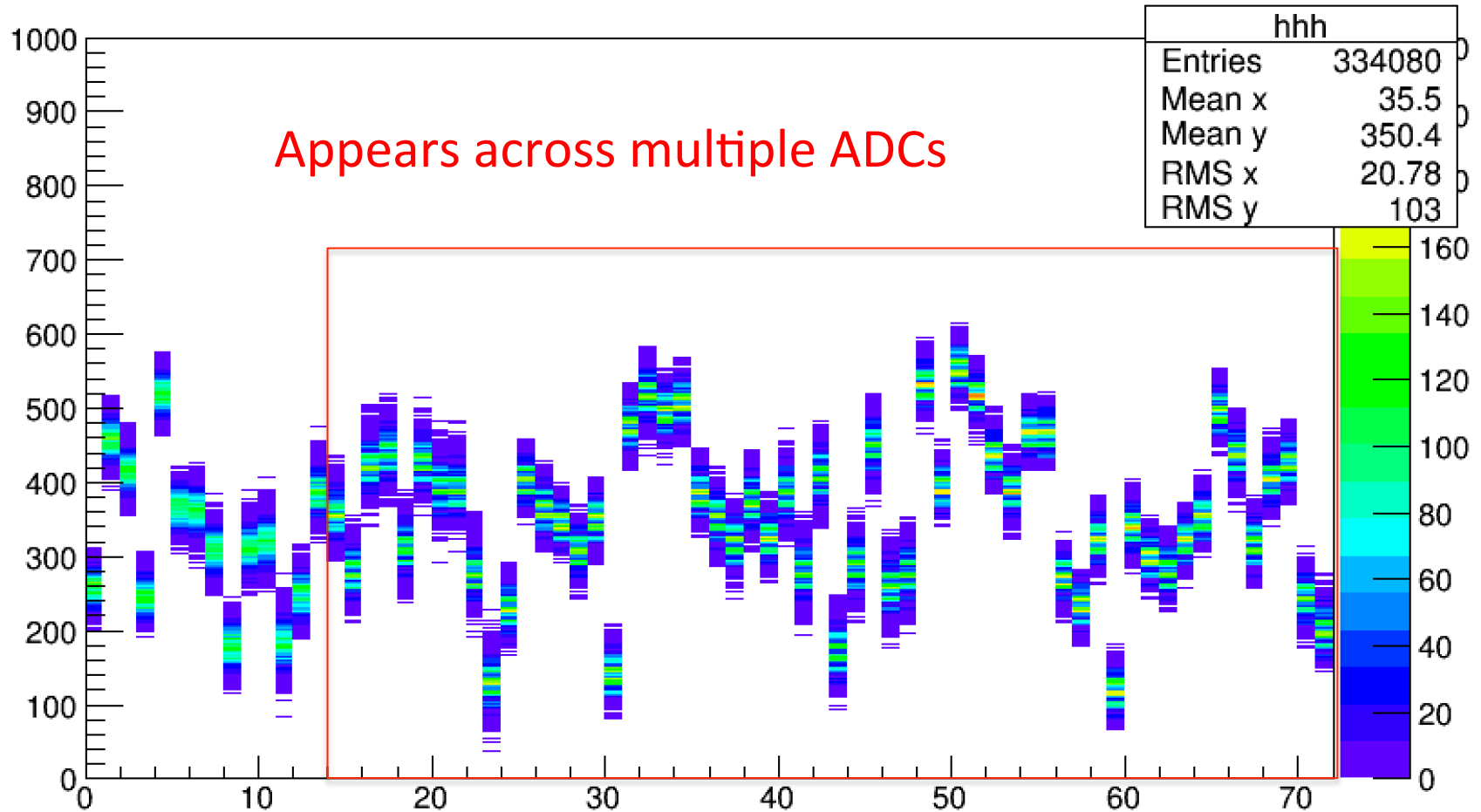
ProjectionY of binx=48



Missing bits

Electronic noise with a sometimes stuck bit (?):

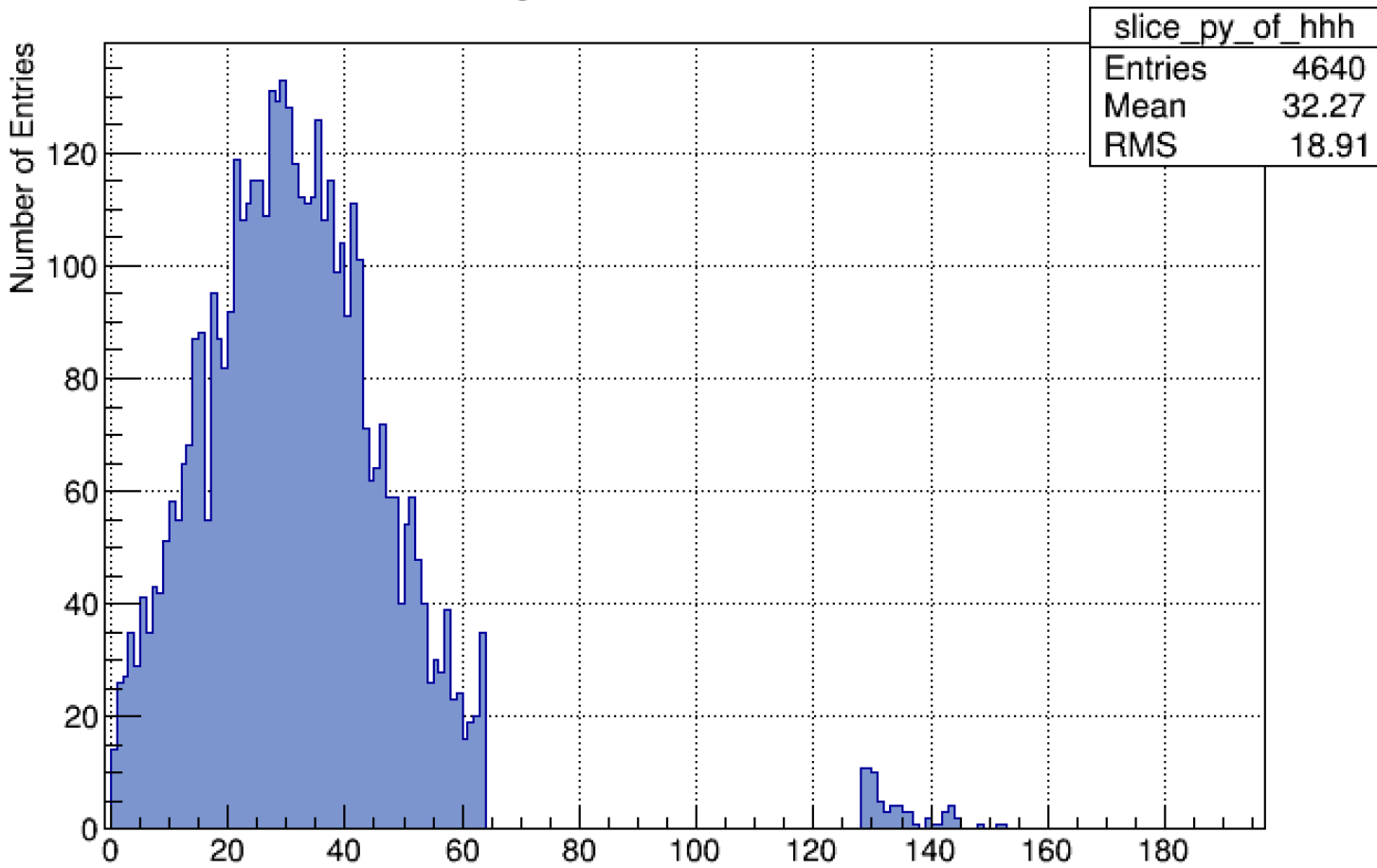
```
sample:channel {rocid == 25 && slot == 4}
```



Missing bits

One channel where the bit is always stuck:

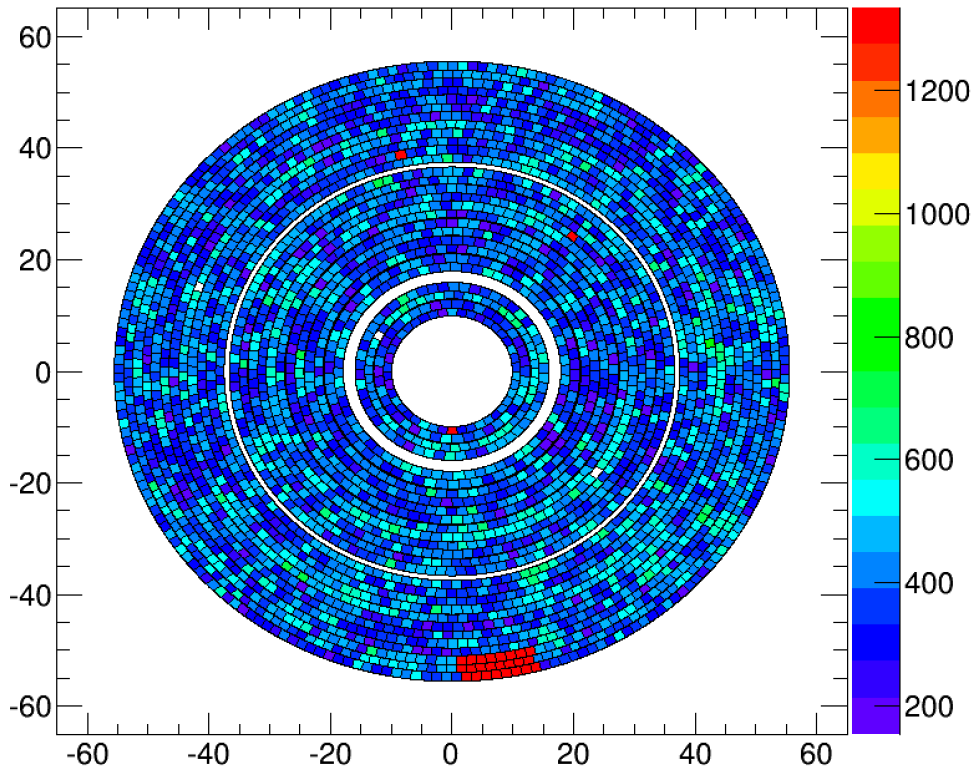
ProjectionY of binx=64



This time it is the only bad channel on the fADC

Pedestal Mean and RMS

Pedestal Mean (first 20 samples)



Pedestal RMS (first 20 samples)

