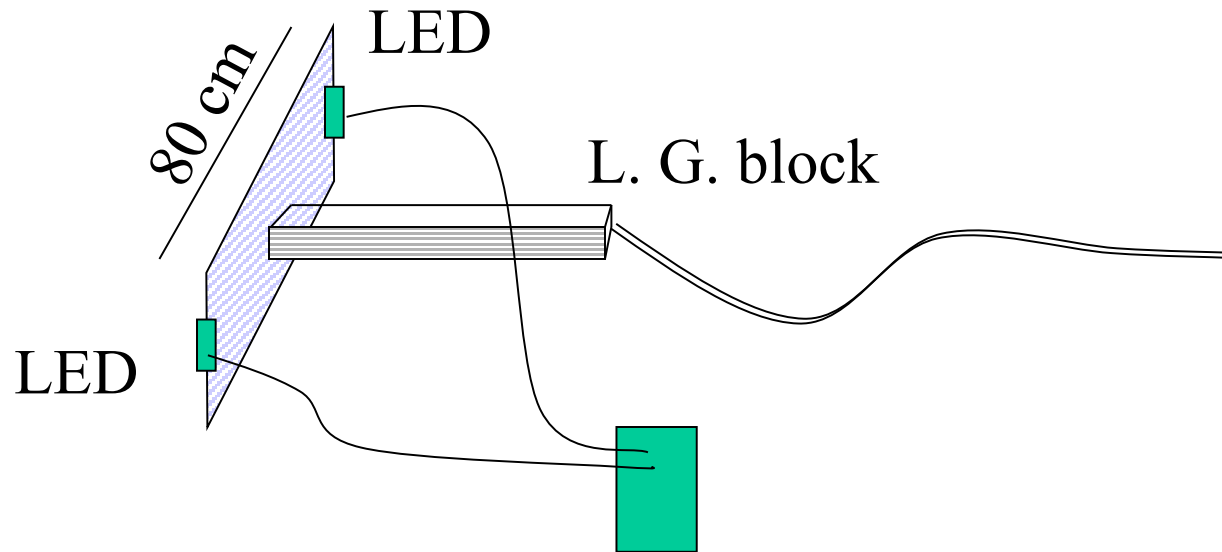


FCAL Calibration

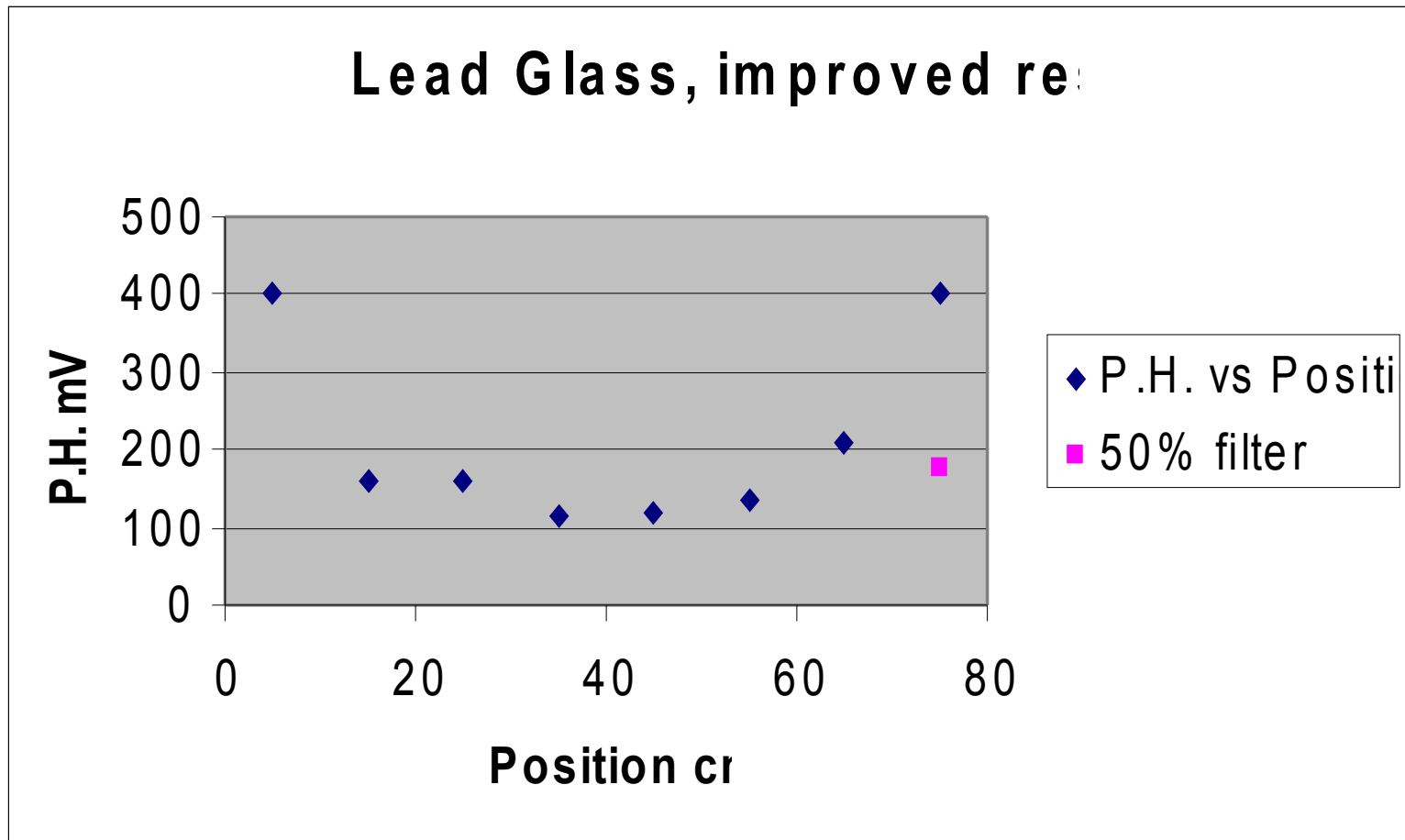
Improved configuration.

- Replaced with narrower beam LEDs.
“Dome window” $2\varphi \simeq 60^\circ$.
- Supported LED board on the pane, with instant glue.
- Use a film filter at the position close to the LED.

Pane with Lead Glass block.



Light output along the pane



Notes

There is enough light for calibration.

Flux variation is smooth.

Excess light can be easily attenuated.