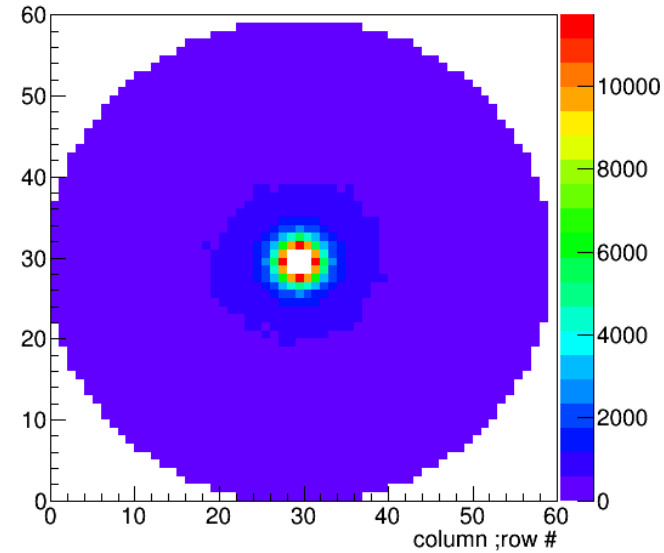
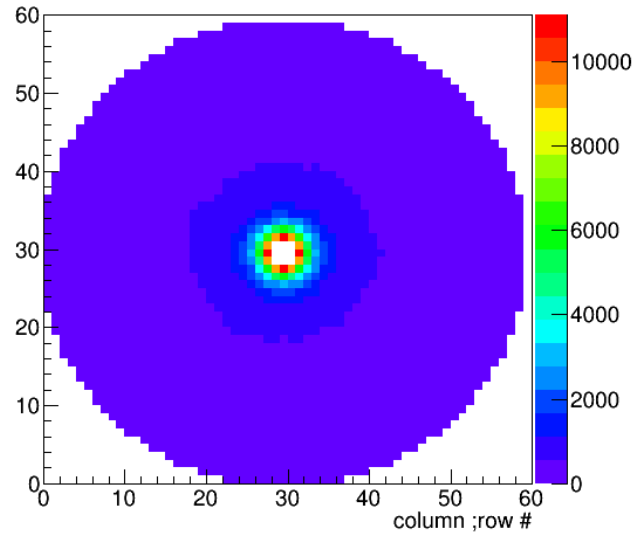


EM Background Studies

- Goal: Quick look at MC to check EM background rates at various low solenoid currents
- Generated 1M bggen events for:
No field, 50A, 100A, 200A, 300A, 1200A
 - Incoherent beam, $E(g) = 1 - 10$ GeV
 - No detailed comm. target geometry, place events in 0.2 cm diameter disk
 - EM bkgd for beam of 10^7 photons/sec, gate ± 200 ns
- Check rates for 100k events

FCAL

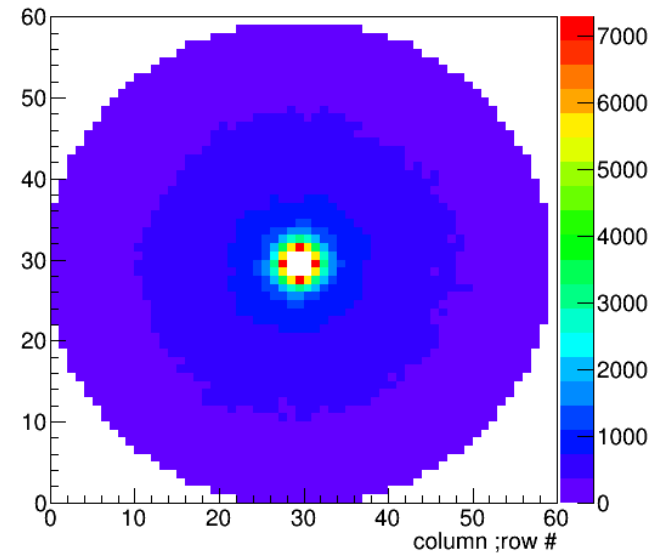
None



300 A

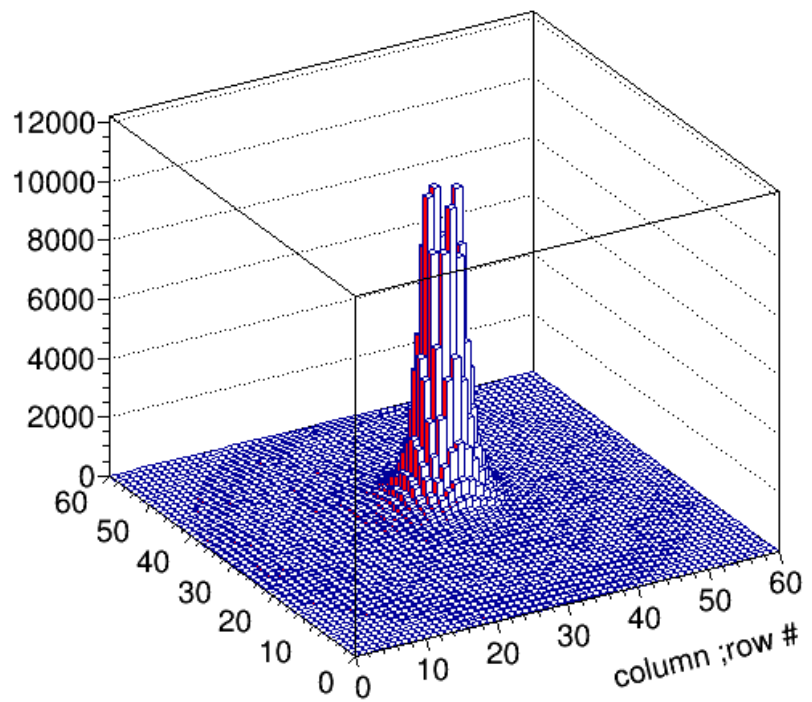
Hits per channel per 100k evts

Current	Ring 1	Ring 2	Ring 3
None	9800	5470	3130
50 A	9800	5490	3170
100 A	10020	5630	3250
200 A	10540	5700	3062
300 A	10240	5130	2670
1200 A	6180	2880	1670

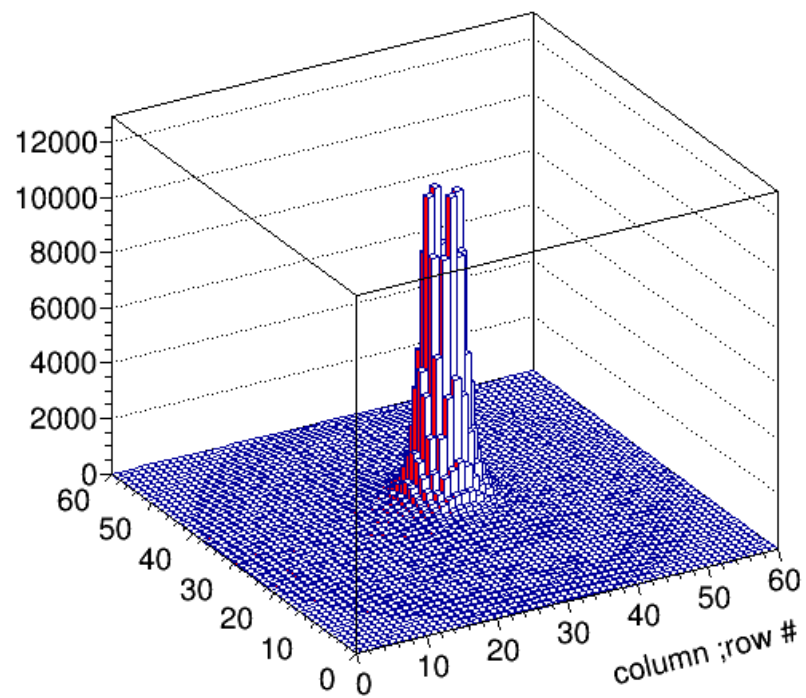


1200 A

FCAL



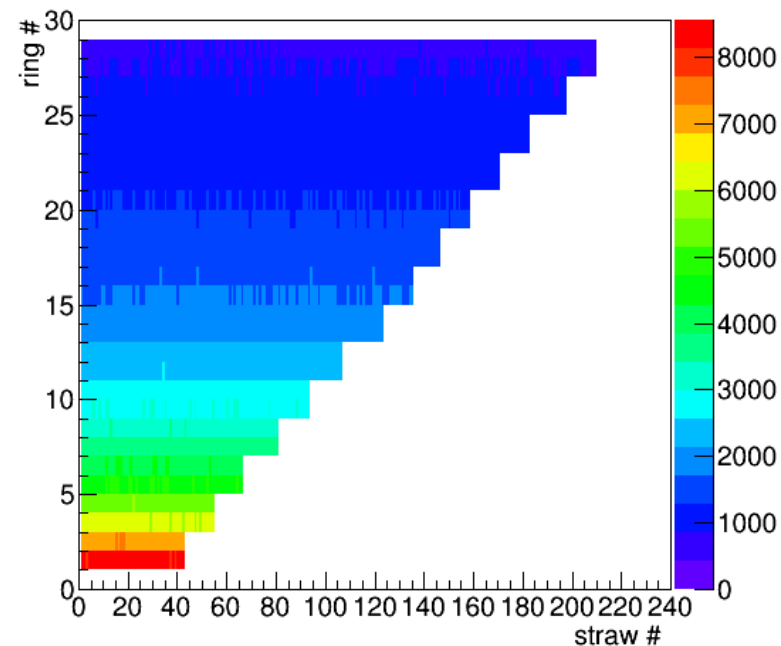
None



300 A

CDC

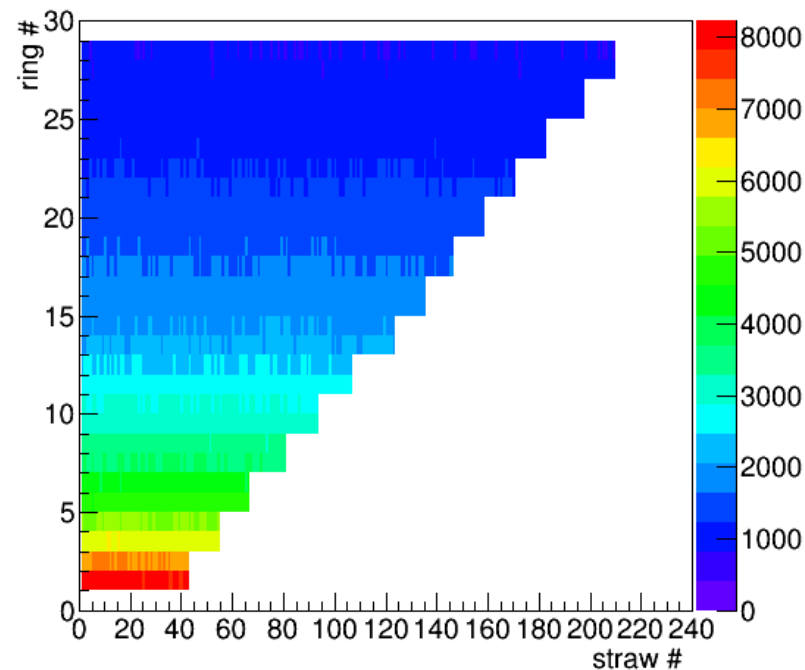
None



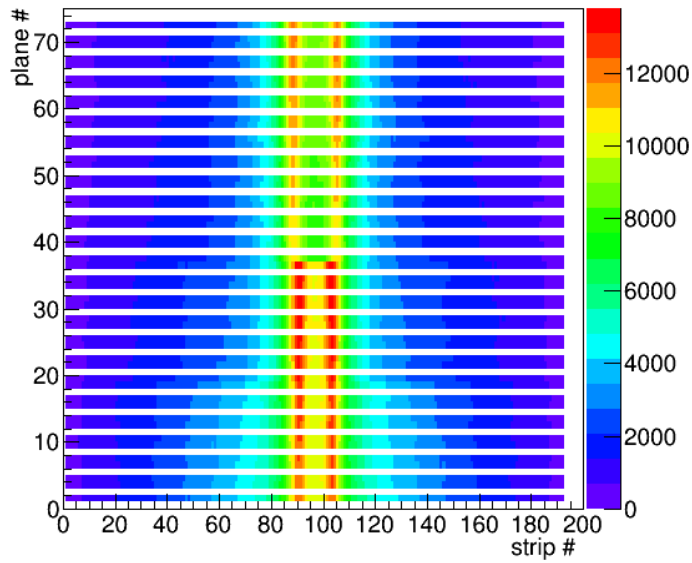
Hits per channel
per 100k evts

Current	Ring 1
None	8270
50 A	8630
100 A	9170
200 A	8800
300 A	8200
1200 A	7970

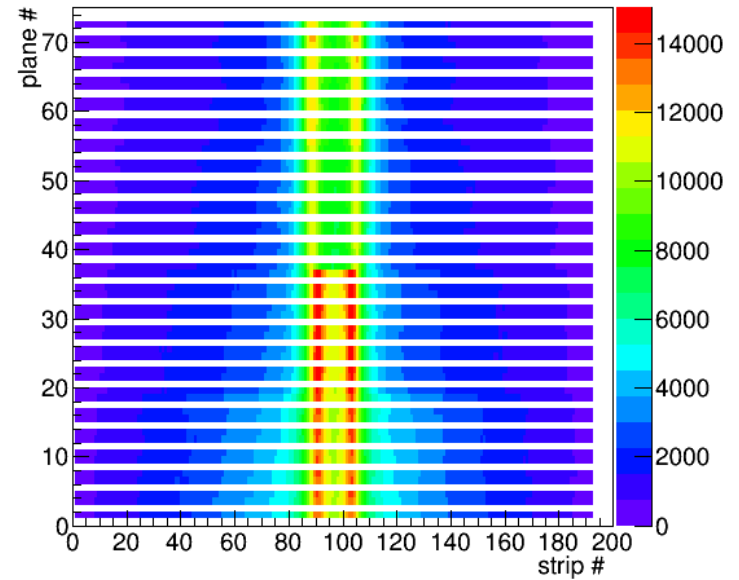
1200 A



FDC



None

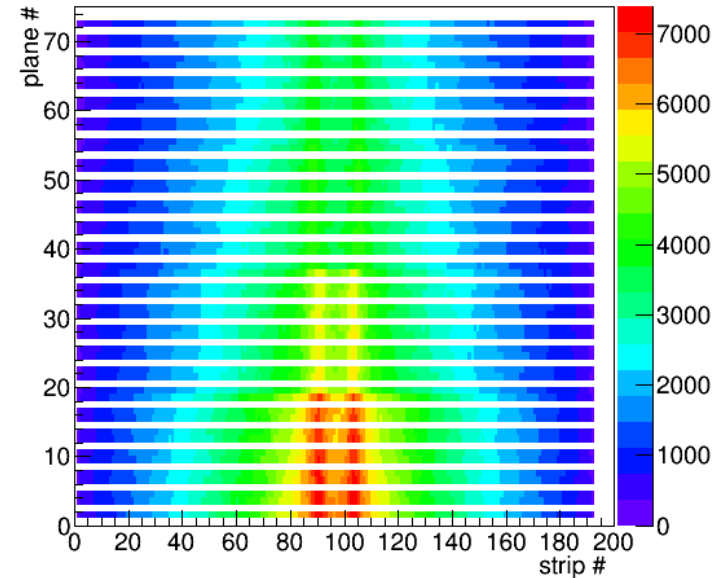


300 A

Hits per 100k evts

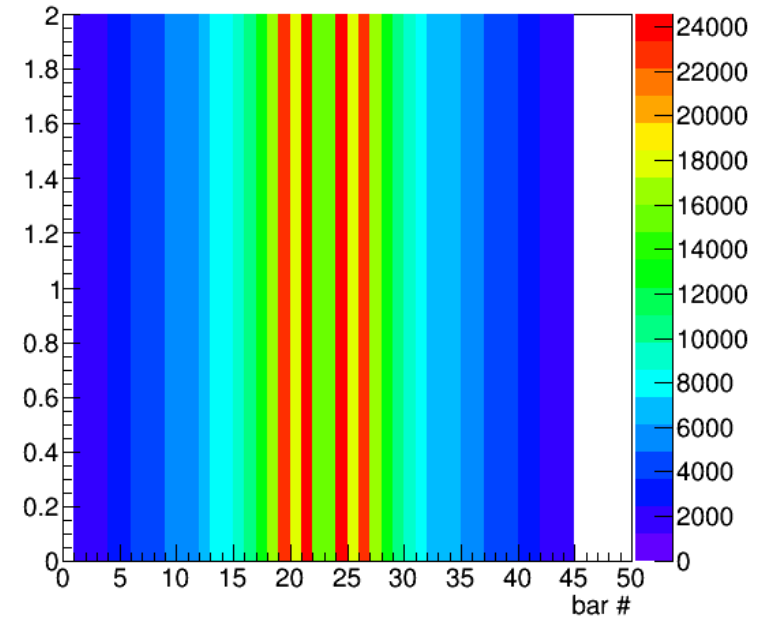
Current	Max
None	13900
50 A	15000
100 A	16100
200 A	16600
300 A	15000
1200 A	7377

1200 A



TOF

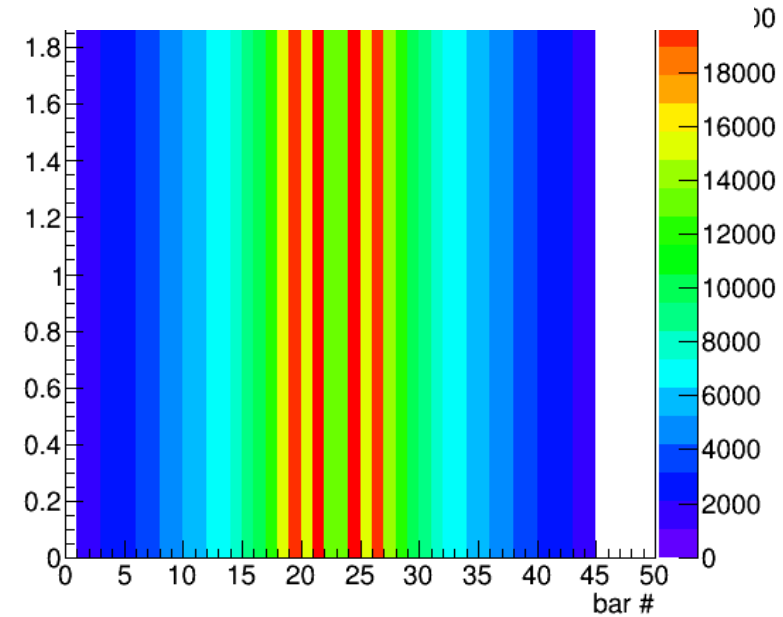
None



Hits per 100k evts

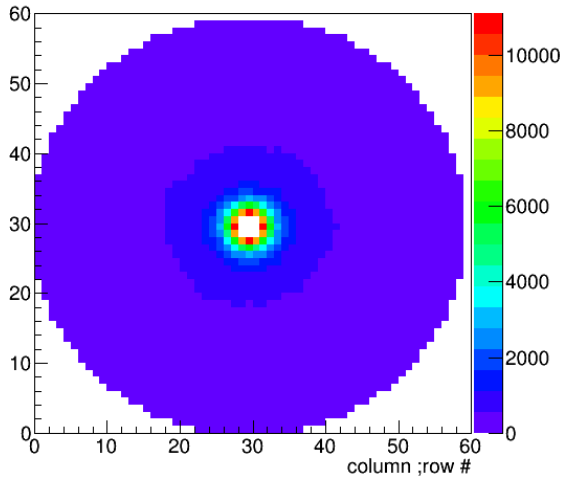
Current	Max
None	24460
50 A	25000
100 A	26100
200 A	27200
300 A	26000
1200 A	21000

1200 A

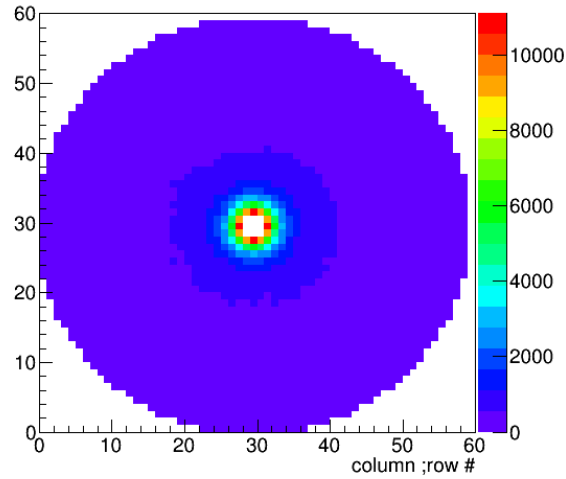


BACKUPS

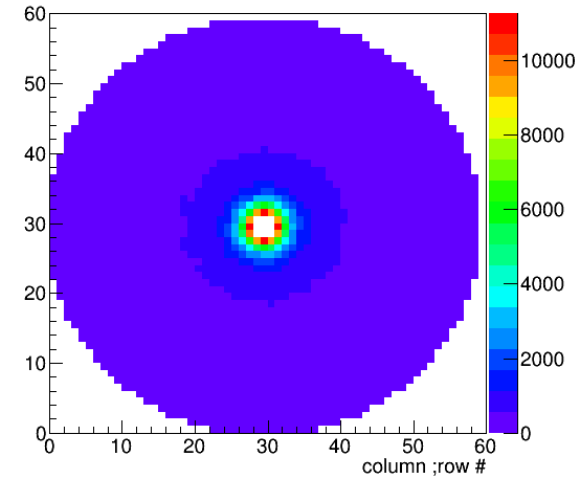
FCAL Hits



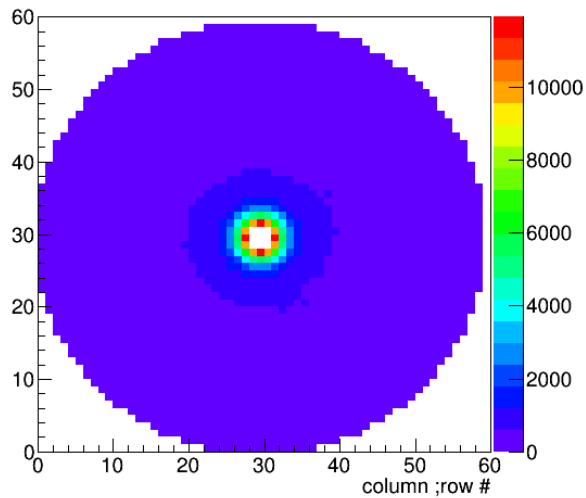
None



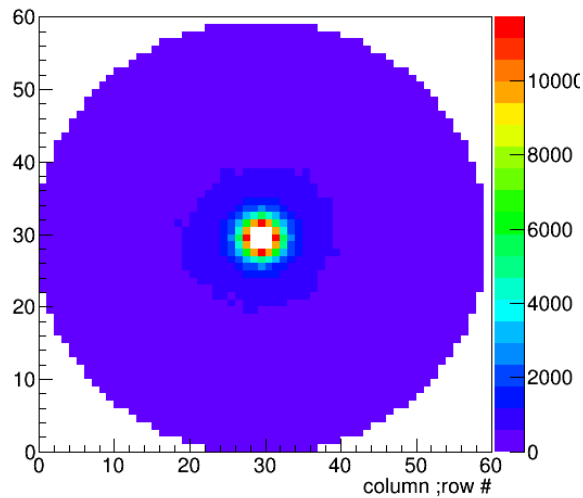
50 A



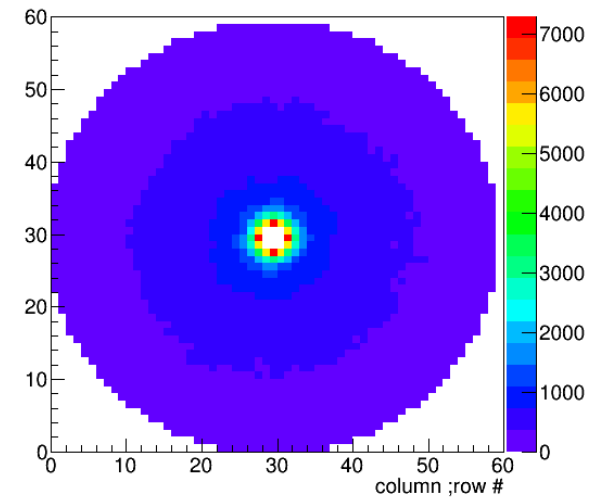
100 A



200 A

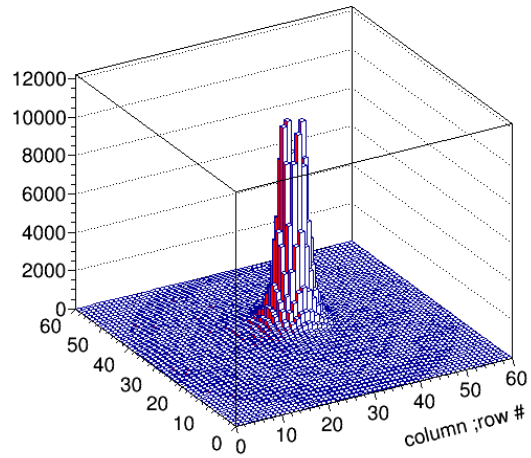


300 A

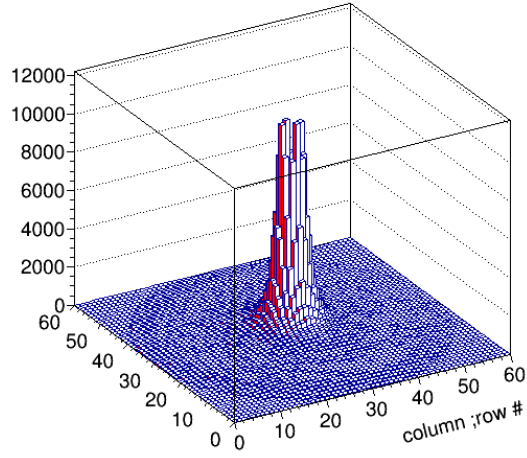


1200 A

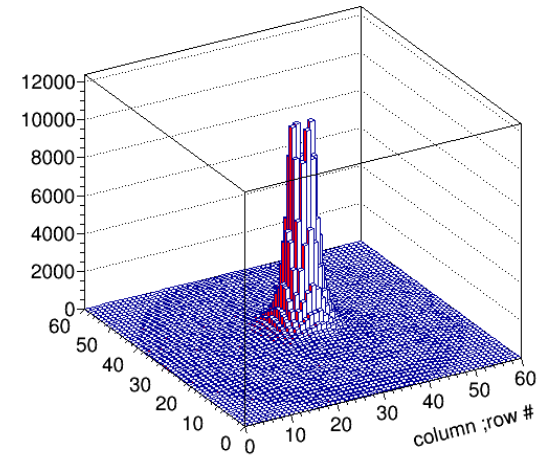
FCAL Hits



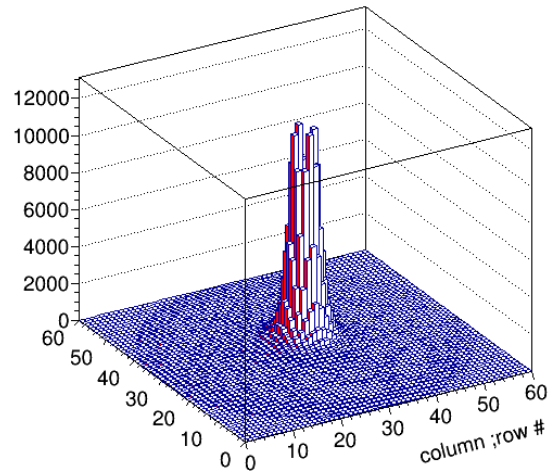
None



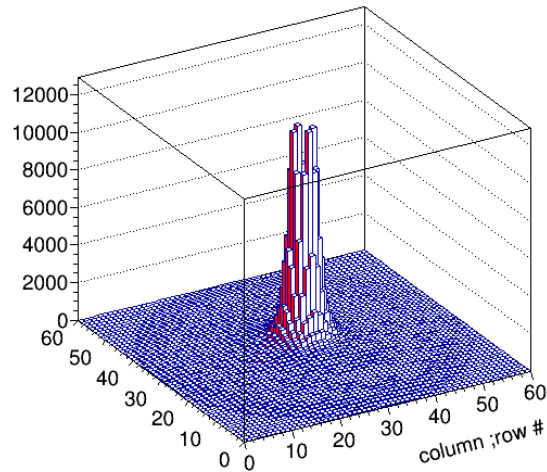
50 A



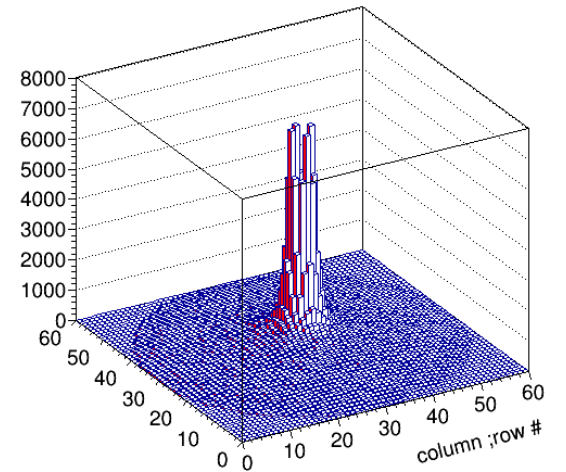
100 A



200 A

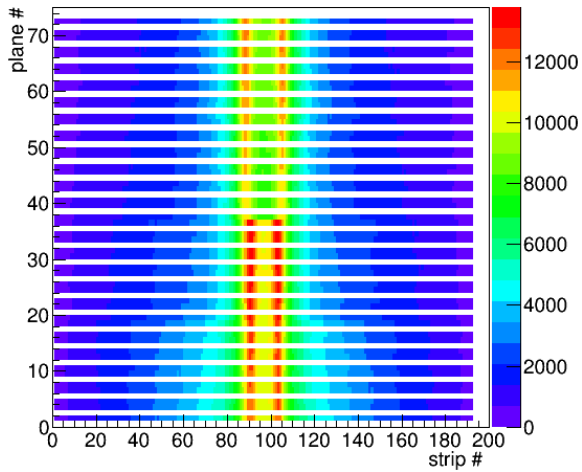


300 A

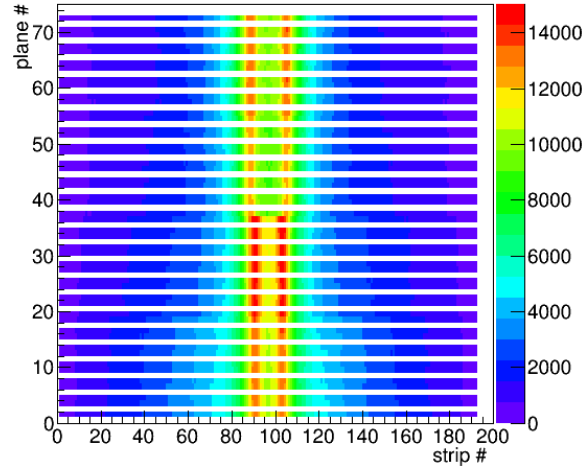


1200 A

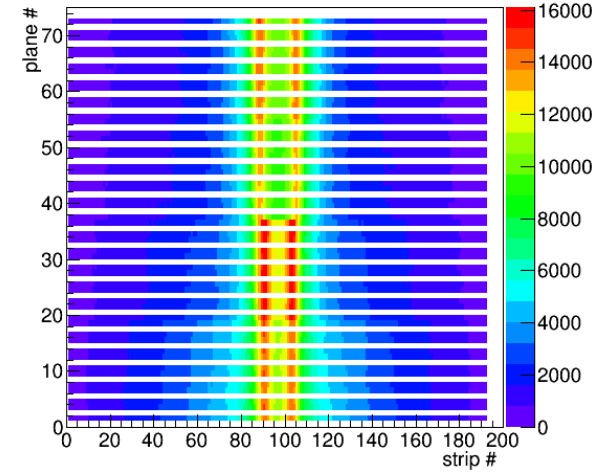
FDC Strip Hits



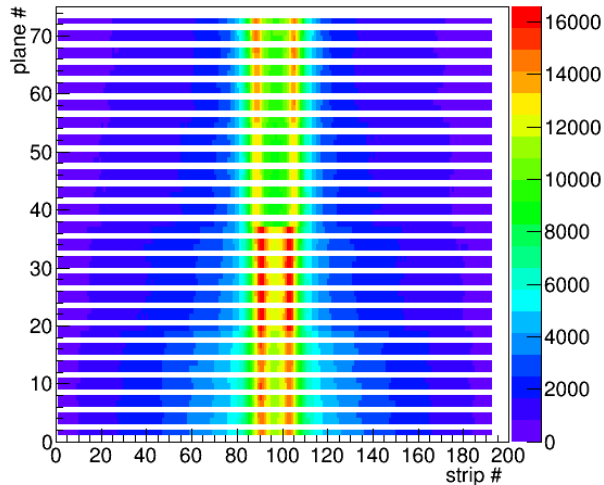
None



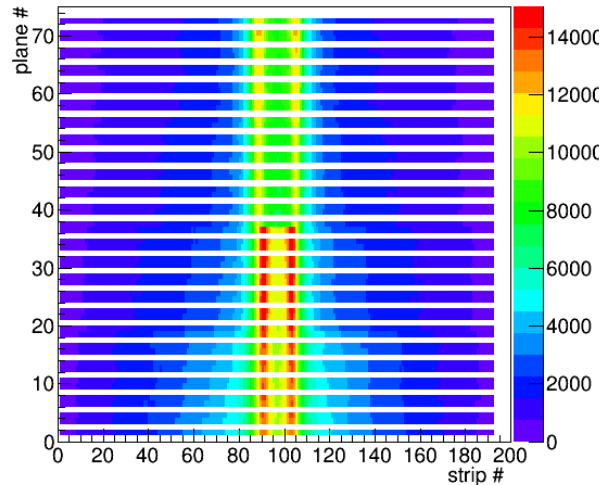
50 A



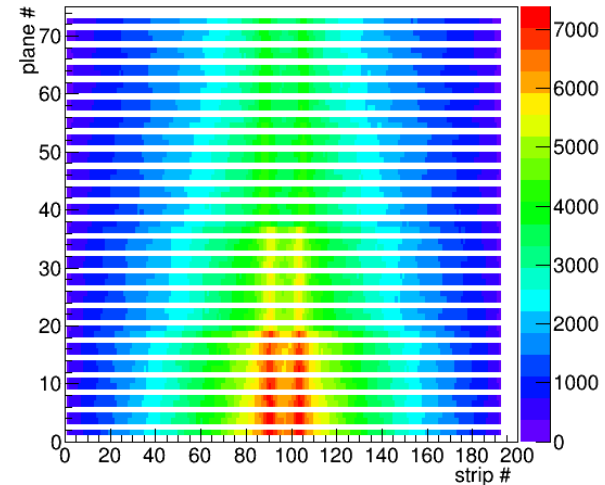
100 A



200 A

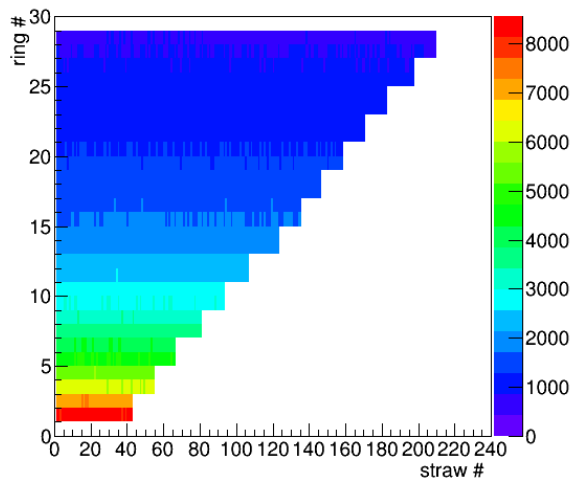


300 A

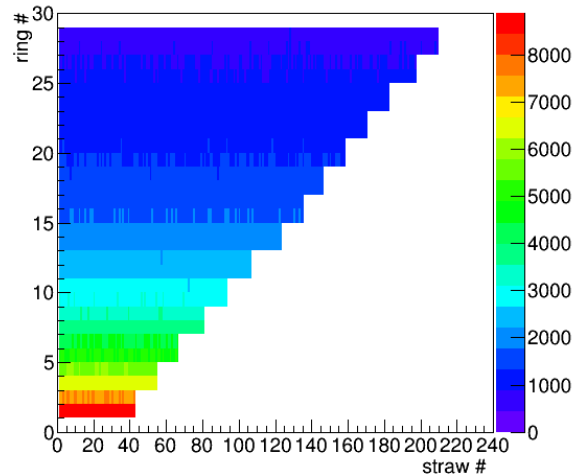


1200 A

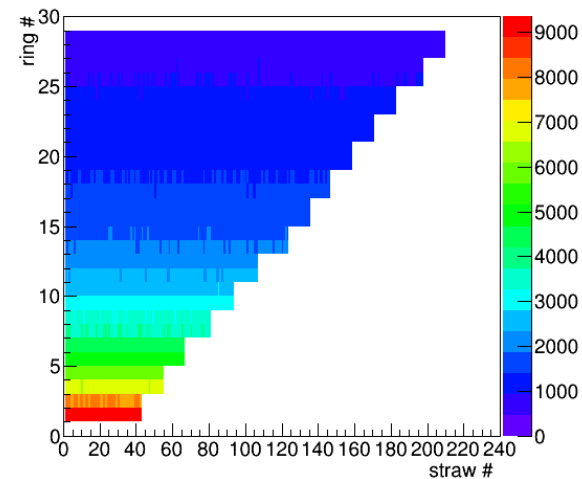
CDC Hits



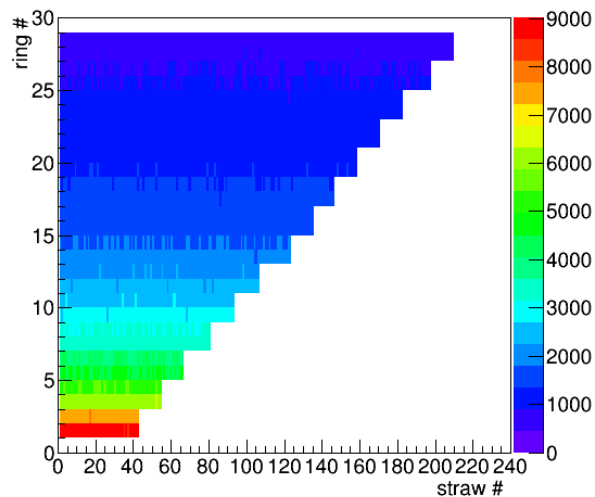
None



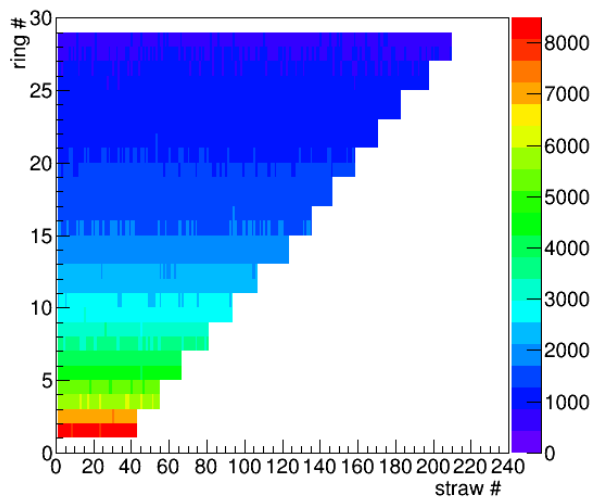
50 A



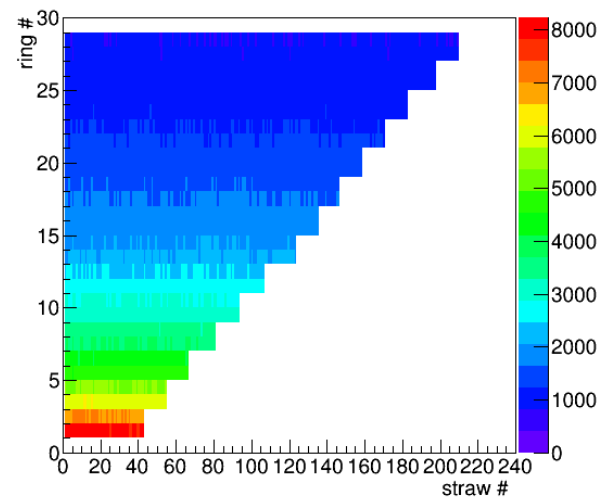
100 A



200 A

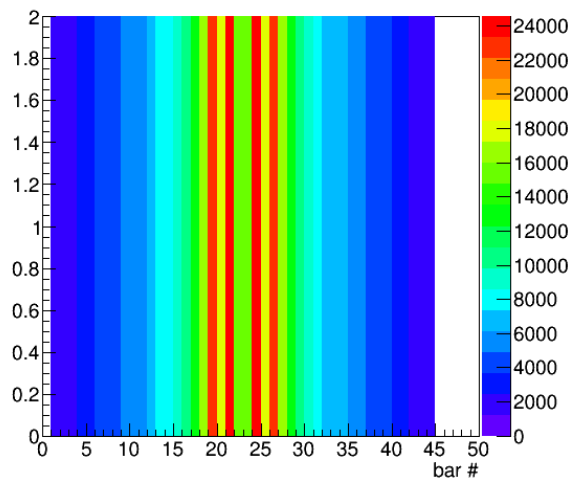


300 A

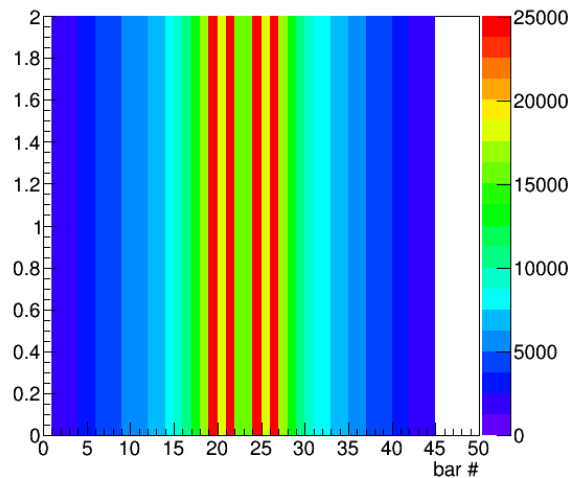


1200 A

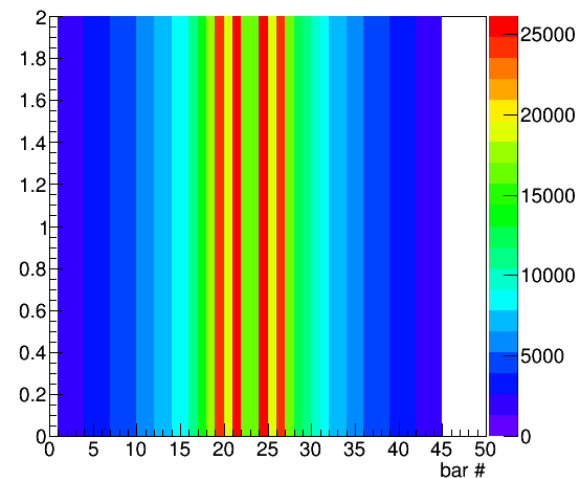
TOF Hits



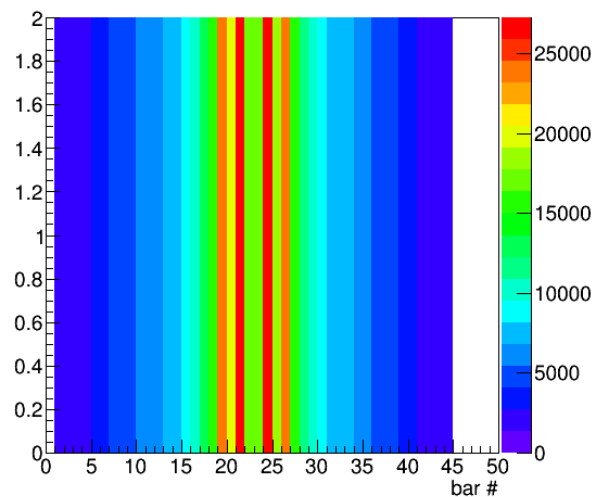
None



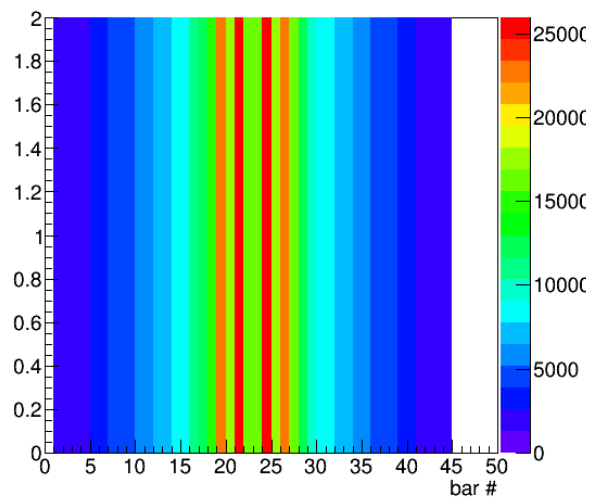
50 A



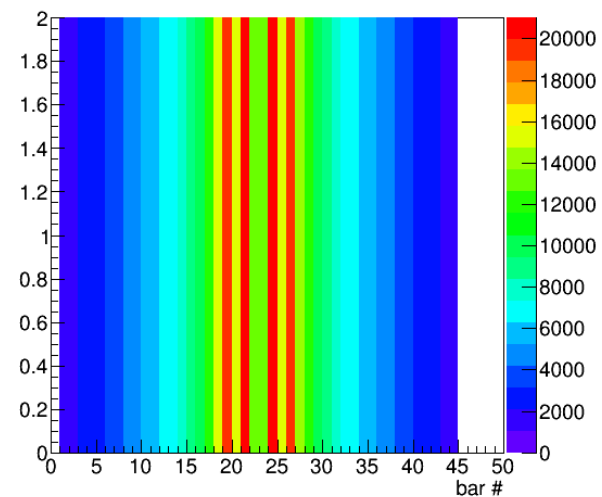
100 A



200 A

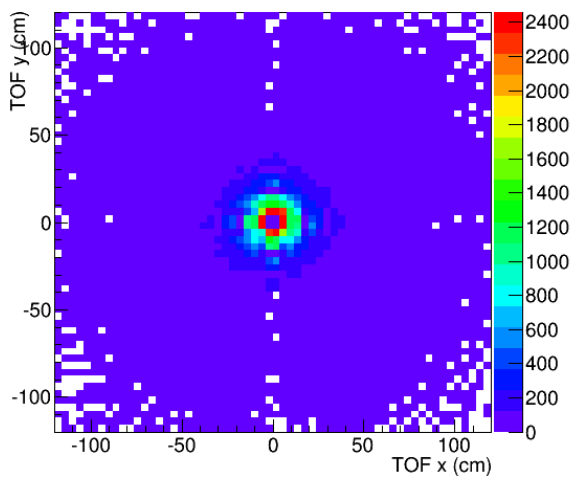


300 A

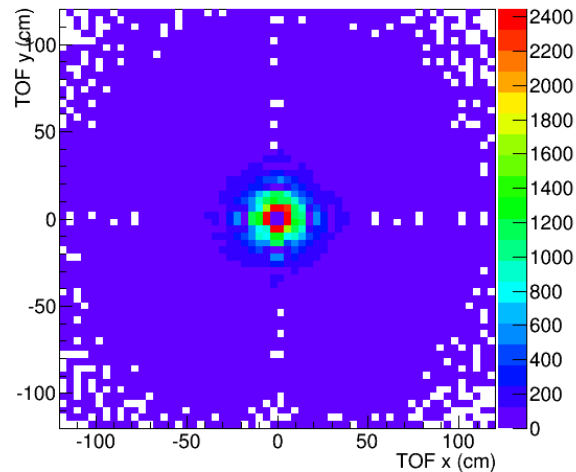


1200 A

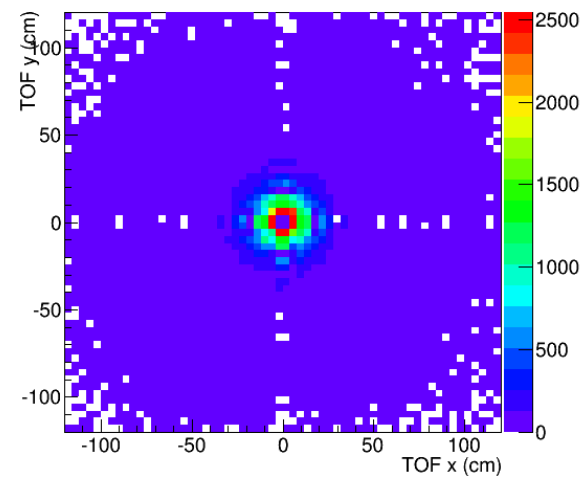
TOF Points



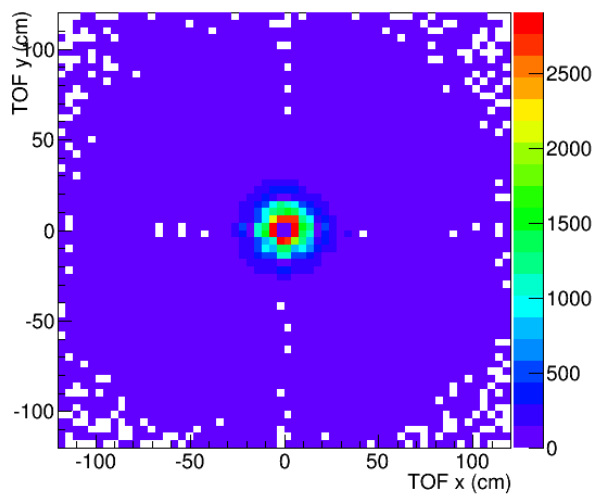
None



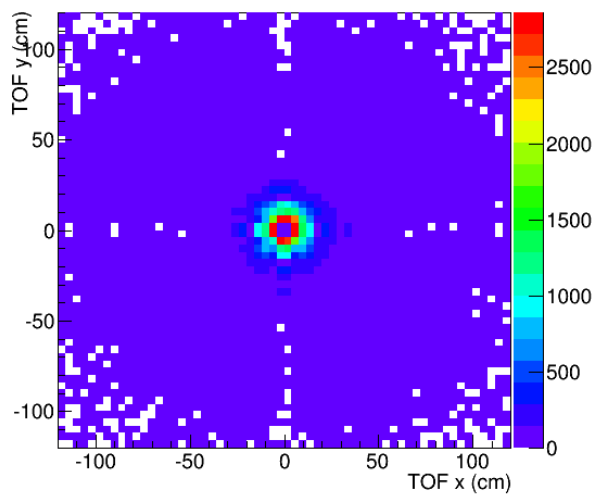
50 A



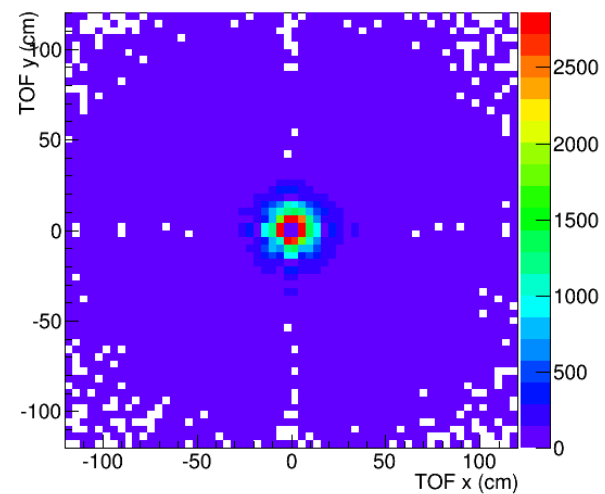
100 A



200 A



300 A



1200 A