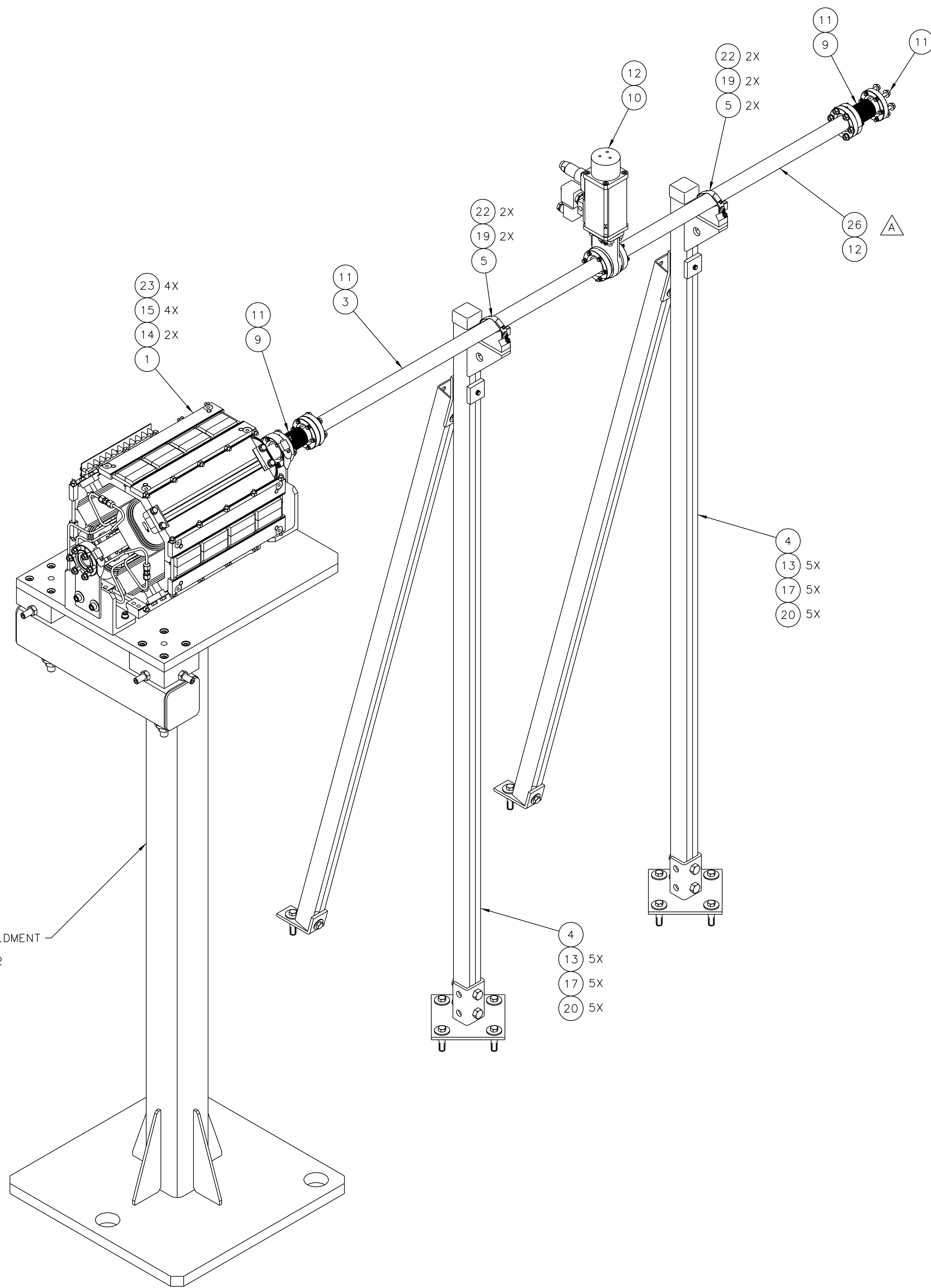


REVISION HISTORY				
ZONE	REV	DESCRIPTION	DATE	APPROVED
SH1:B2 D2:G4 SH2:H3	A	QUANTITY OF IT.3 WAS 2; ITEM 26 WAS ADDED; REF. DIM. 91.1 WAS 97.7 - SEE SH.2. VGR 11-5-2013		R. GETZ T. WHITLATCH



TAGGER QP MAGNET PEDESTAL WELDMENT
D00000-05-01-2062 (REF).
SEE DRAWING D00000-00-02-1002
TAGGER STANDS & PEDESTALS
ORIENT/INSTALL.

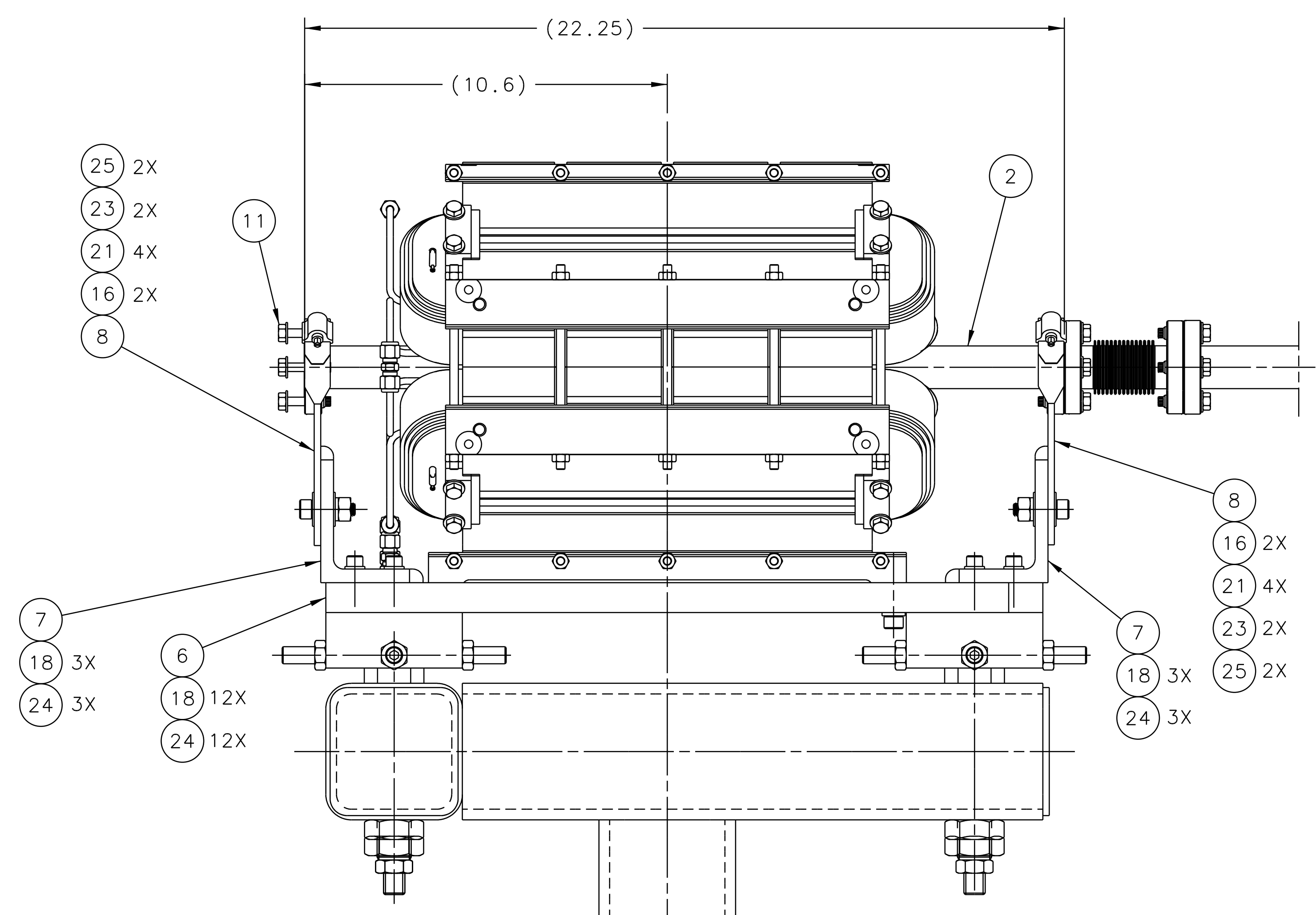
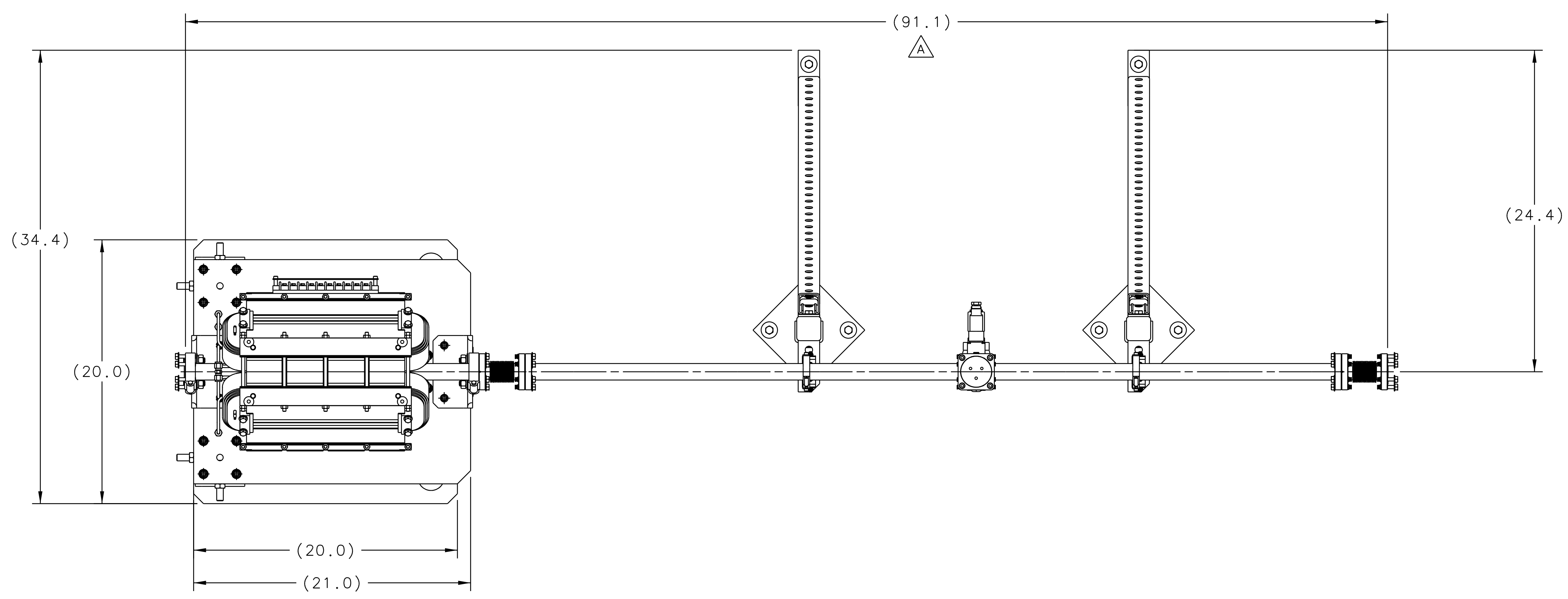
NOTES:

- CLEAN AND HANDLE PER JLAB SPECIFICATIONS
No. 22631-S-001 & 22632-S-001.
- SUGGESTED SOURCE OR JLAB APPROVED ALTERNATE:
 - a) McMASTER-CARR (404) 346-7000 www.mcmaster.com
 - b) HILTI Corporation 200 TINTEN CT., #101 CHESAPEAKE, VA 23320 (757) 382-0442 www.hilti.com
 - c) MDC VACUUM PRODUCTS 23482 CABOT BOULEVARD HAYWARD, CA 94545-1651 (800) 443-8817 www.mdcvacuum.com
 - d) VAT Inc. 500 WEST CUMMINGS PARK WOBURN, MA 01801 (800) 935-1446 www.vatvalve.com
- WEIGHT OF ITEM #1 = 350 LBS (FOR REFERENCE).

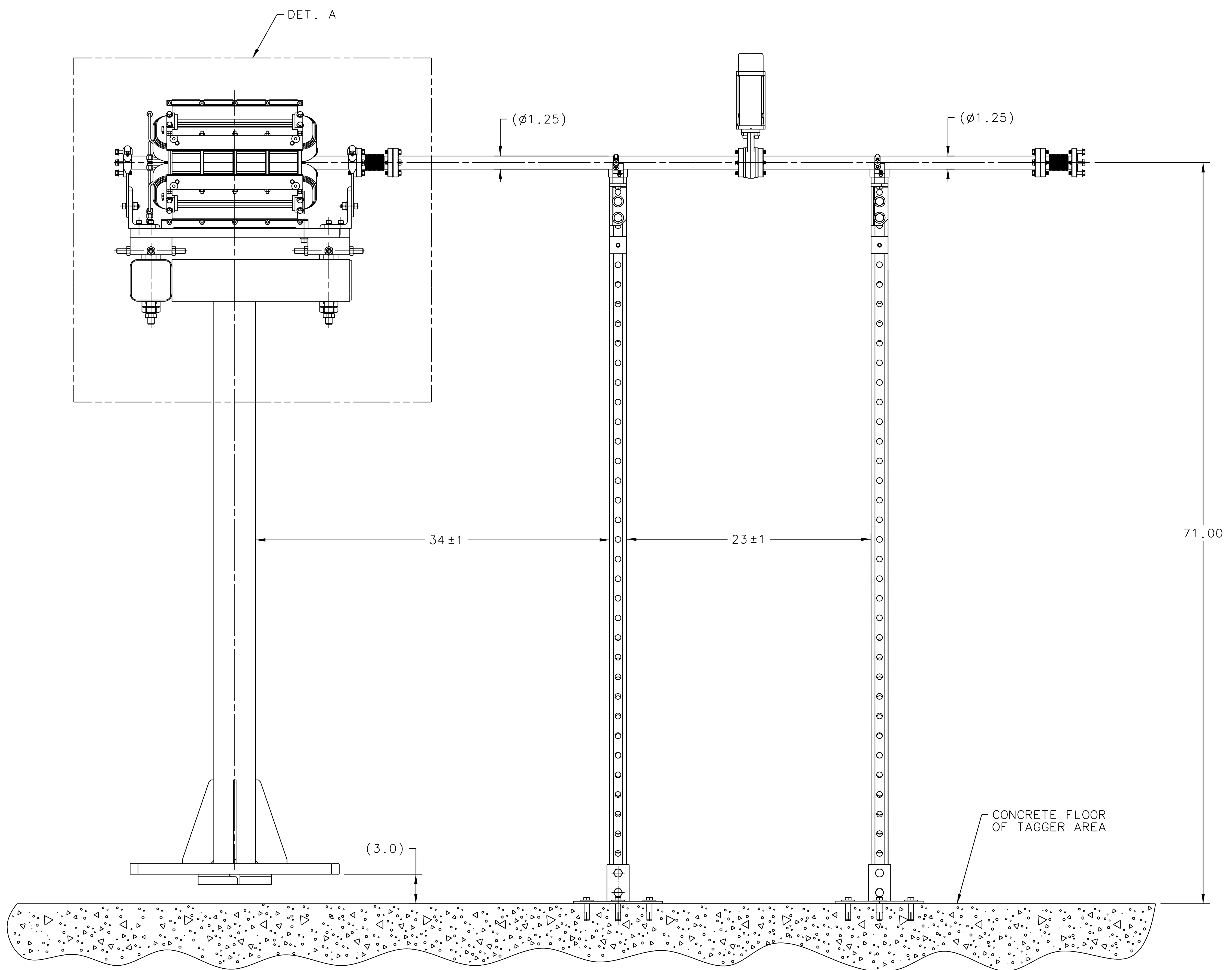
QTY	ITEM NO.	PART OR IDENTIFYING NO.	DESCRIPTION OR IDENTIFICATION	MATERIAL SPECIFICATION	NOTES
1	26	D00000-02-02-1006-04	TUBE ASSEMBLY 2.75 CF X 1.25 TUBE OD		
4	25	McMASTER-CARR 93439A630	HEX NUT .375-16	SILICON BRONZE	2a
18	24	McMASTER-CARR 98437A112	SPLIT LOCK WASHER FOR .312 SCREW SIZE	STAINLESS STEEL	2a
8	23	McMASTER-CARR 98437A115	SPLIT LOCK WASHER FOR .375 SCREW SIZE	STAINLESS STEEL	2a
4	22	McMASTER-CARR 93852A101	FLAT WASHER FOR #10 SCREW SIZE	STAINLESS STEEL	2a
8	21	McMASTER-CARR 98026A031	FLAT WASHER FOR .375 SCREW SIZE	STEEL ZINC PLATED	2a
10	20	McMASTER-CARR 91090A112	LARGE DIA. FLAT WASHER FOR .375 SCREW SIZE	STEEL ZINC PLATED	2a
4	19	McMASTER-CARR 92196A240	SOCKET HEAD CAP SCREW #10-24 UNC X .375 LG	STAINLESS STEEL	2a
18	18	McMASTER-CARR 92196A583	SOCKET HEAD CAP SCREW .312-18 UNC X 1.0 LG	STAINLESS STEEL	2a
10	17	McMASTER-CARR 91309A624	HEX HEAD CAP SCREW .375-16 UNC X 1.0 LG	STEEL ZINC PLATED	2a
4	16	McMASTER-CARR 92196A626	SOCKET HEAD CAP SCREW .375-16 UNC X 1.25 LG	STAINLESS STEEL	2a
4	15	McMASTER-CARR 92196A628	SOCKET HEAD CAP SCREW .375-16 UNC X 1.5 LG	STAINLESS STEEL	2a
2	14	McMASTER-CARR 97325A181	DOWEL PIN .25 OD X .75 LG	BRASS	2a
10	13	HILTI 00336426	HDI .375-16 DROP-IN ANCHOR	STEEL ZINC PLATED	2b
2	12	VAC5000133-0002-03	2.75 CF TAPPED BOLT CONNECTION		
5	11	VAC5000133-0001-03	2.75 CF THRU BOLT CONNECTION		
1	10	VAT Inc. 01032-UE44	MINI UHV GATE VALVE CF DN-1.5 PNEUMATIC ACTUATOR DOUBLE ACT.		2d
2	9	MDC 400003	2.75 FLG GIRDER MOUNTING V-BLOCK MODIFICATION	STAINLESS STEEL	2c
2	8	28471-0020	FLEXIBLE COUPLING 2.75 CF X 1.25 ID X 3.5 LG		
2	7	D00000-02-02-2009	ANGLE SUPPORT BRACKET		
1	6	D00000-02-02-2008	QP MAG MOUNTING PLATE		
2	5	D00000-02-02-2007	TUBE CLAMP MODIFIED		
2	4	D00000-05-01-1027	SUPPORT STAND-UNISTRUT 71 HT ASSEMBLY		
1	3	D00000-02-02-1006-02	TUBE ASSEMBLY 2.75 CF X 1.25 TUBE OD		
1	2	D00000-02-02-1006-01	TUBE ASSEMBLY 2.75 CF X 1.25 TUBE OD		
1	1	MAG-005-0016-0000	QP MAGNET ASSEMBLY		

EACH SHEET OF MULTI-SHEET DRAWINGS SHALL ALWAYS HAVE THE SAME REVISION LEVEL.

DOCUMENT CONTROL STAMP	DIM & TOL PER ASME Y14.5, UNLESS OTHERWISE SPECIFIED DIMENSIONS ARE IN INCHES TOLERANCES ARE FRACTIONS DECIMAL ANGLES ± N/A .XX ± .02 ± .50°	TRACKING NO. N/A	United States Department of Energy
MATERIAL SEE PARTS LIST	THIRD ANGLE PROJECTION	APPROVALS DATE 28NOV12	Jefferson Lab Thomas Jefferson National Accelerator Facility Newport News, Virginia
FINISH MACHINED SURFACES DEBURR & BREAK ALL SHARP EDGES	UNLESS OTHERWISE NOTED	CHECKED R. GETZ	HALL D GLUE-X INSTALLATION TAGGER AREA
DO NOT SCALE DRAWING		APPROVED R. GETZ	TAGGER QP MAG BEAMLIN COMP INSTALL
		APPROVED T. WHITLATCH	SIZE DWG. NO. E D00000-00-02-1004
			SCALE 1:4 (SEE OR ASST NO. D00000-00-02-0000) SHEET 1 OF 2



DETAIL A
SCALE 1/2.5



CONCRETE FLOOR
OF TAGGER AREA

SIZE	DWG. NO.	REV.
E	D00000-00-02-1004	A
SCALE	1:4	ISSUED ON 11/20/2013
		DESIGNED BY: T. WHITLATCH
		CHECKED BY: C. R. GETZ
		DATE: 11/20/2013
		SHEET 2 OF 2