

Chamber alignment update

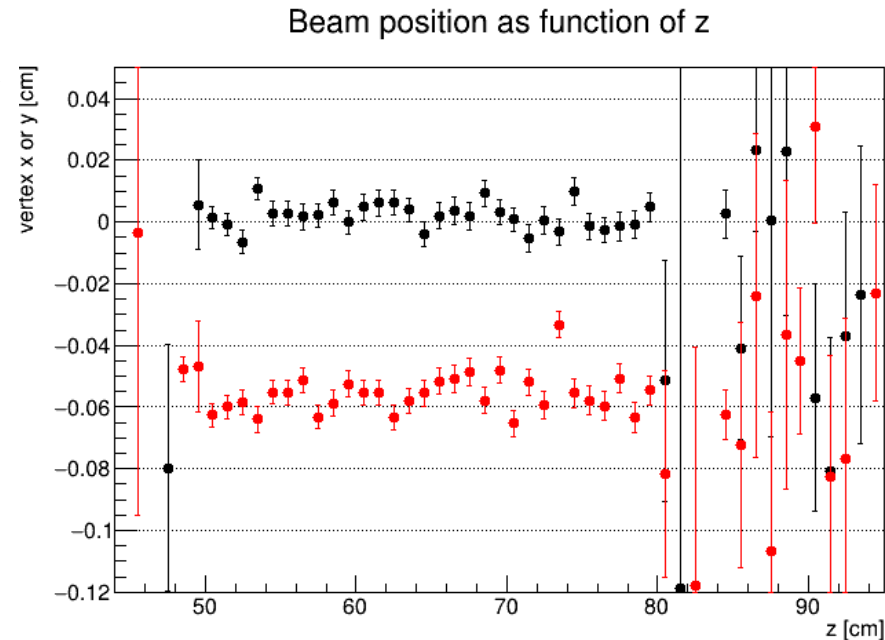
Simon Taylor / JLab

- Removed 1.7 mm x-offset for CDC
- Fix misinterpretation of CDC rotation angles in ccdb: $\varphi_y \rightarrow \varphi_x$, $\varphi_x \rightarrow -\varphi_y$
- Also adjusted φ_x to be consistent with survey number

Current ccdb: $\varphi_x=0.1389$ mrad, $\varphi_y=-0.175$ mrad, $\varphi_z=0.7854$ mrad

My sqlite: $\varphi_x=0.3805$ mrad, $\varphi_y=0.1389$ mrad, $\varphi_z=0.7854$ mrad

Using tracks in CDC
only

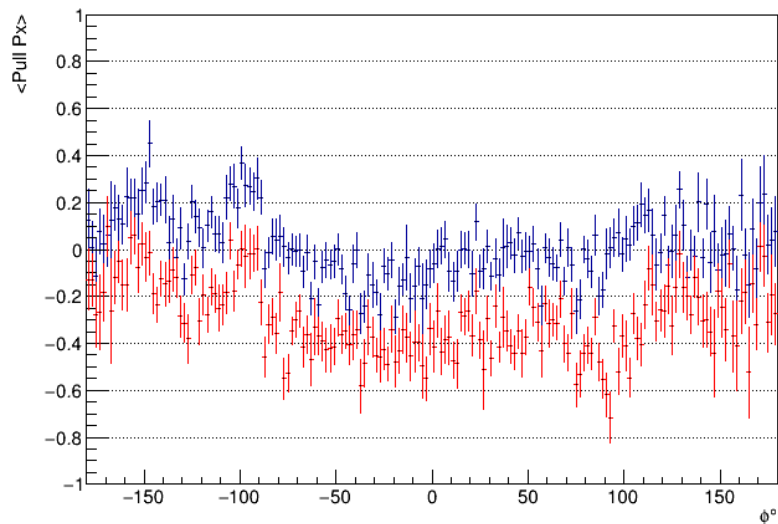


Proton pulls for φ events

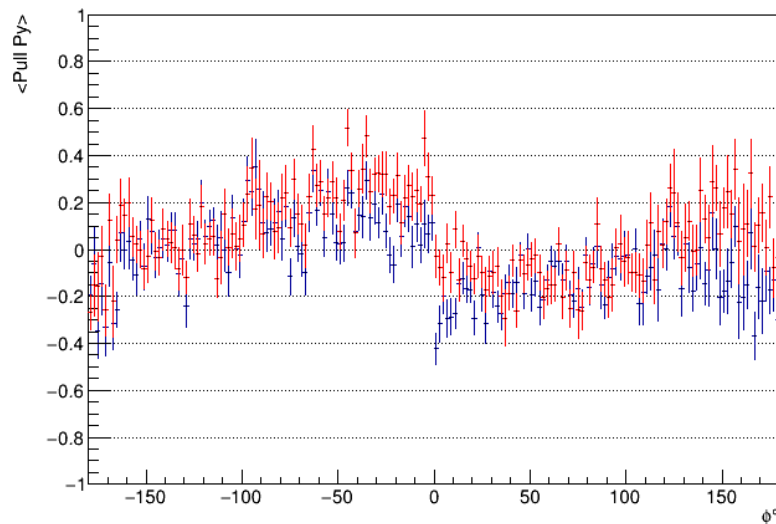
Current cddb: $\delta x=0.17$ cm, $\delta y=-0.04$ cm, $\varphi_x=0.1389$ mrad, $\varphi_y=-0.175$ mrad, $\varphi_z=0.7854$ mrad

My sqlite: $\delta x=-0.013$ cm, $\delta y=-0.04$ cm, $\varphi_x=0.380$ mrad, $\varphi_y=0.1389$ mrad, $\varphi_z=0.7854$ mrad

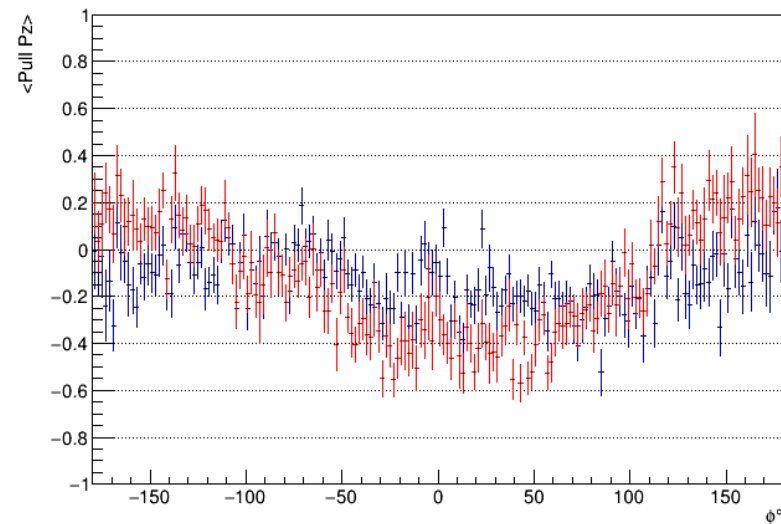
Pull Px for Proton



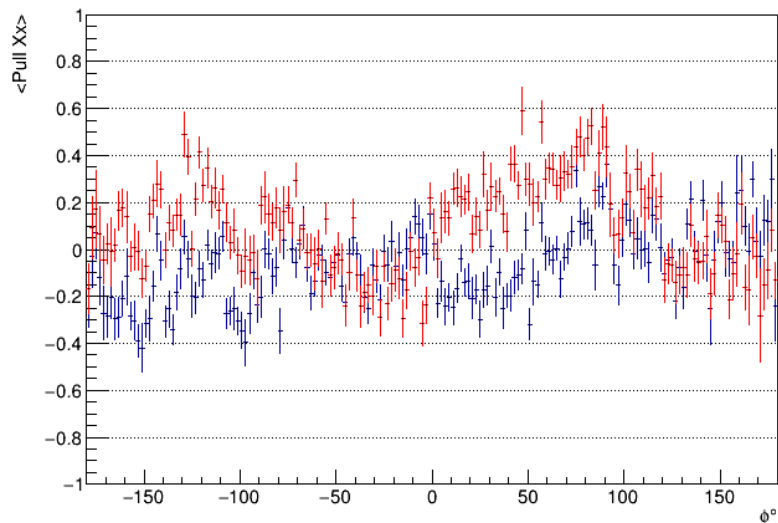
Pull Py for Proton



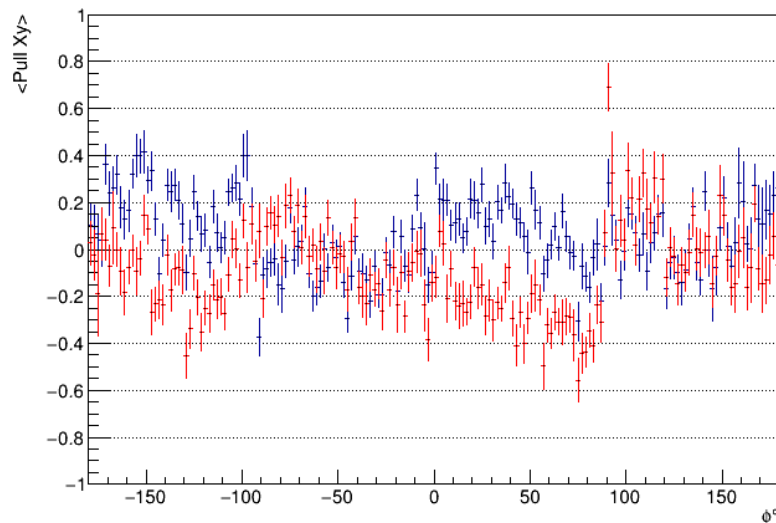
Pull Pz for Proton



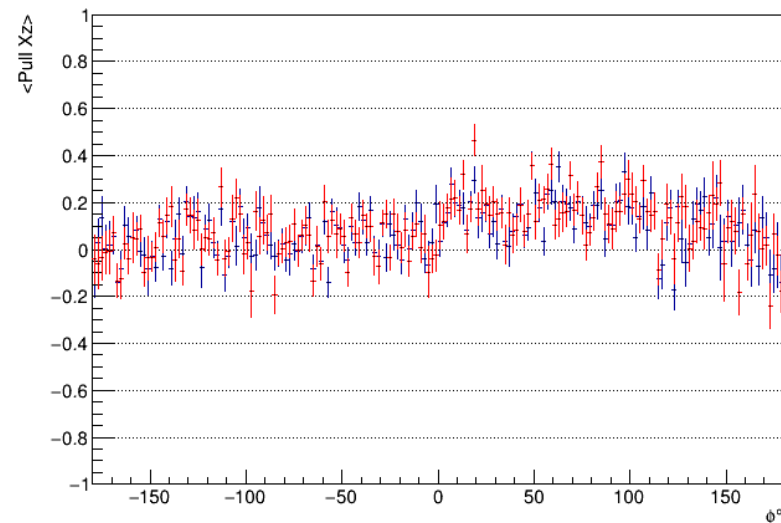
Pull Xx for Proton



Pull Xy for Proton



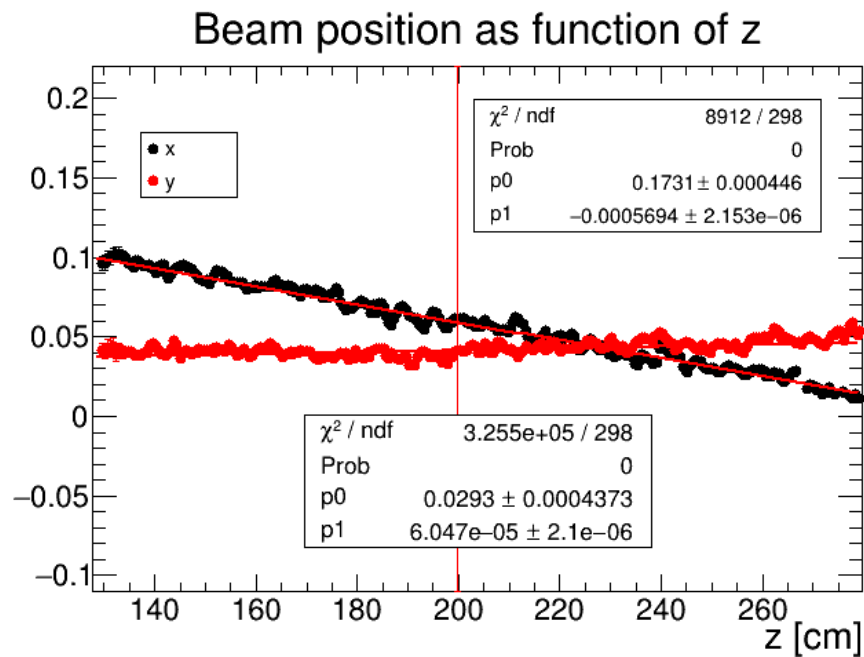
Pull Xz for Proton



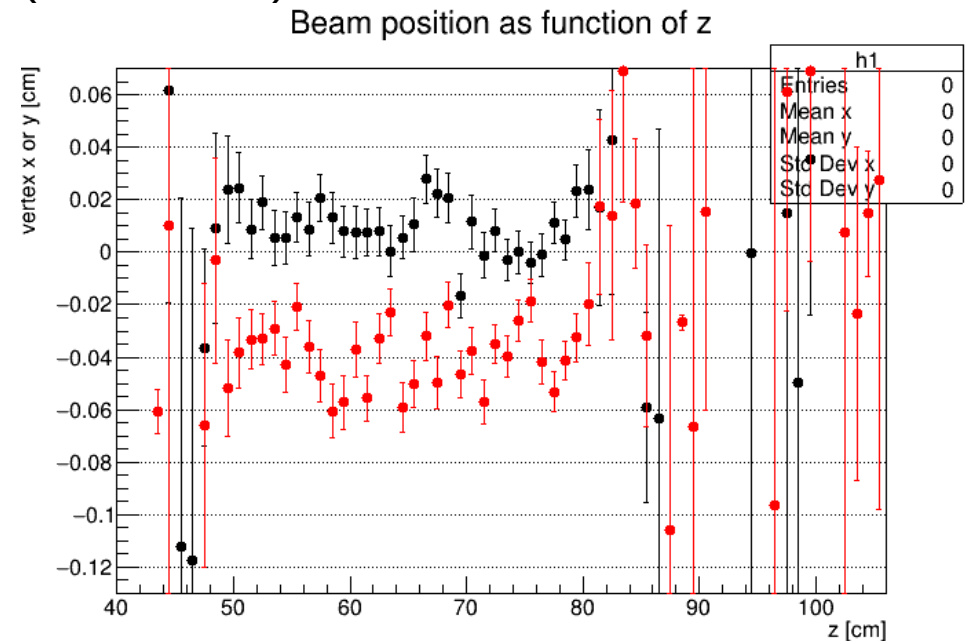
Realignment of FDC relative to CDC

- Needed to tilt and offset FDC as whole to align to CDC
 - $\delta x=0.043$ cm, $\delta y=-0.041$ cm, $\varphi_x=-0.1$ mrad, $\varphi_y=0.575$ mrad, $\varphi_z=3.49$ mrad (still working on this one...)

Benchmark from ccdb, B=0 runs:



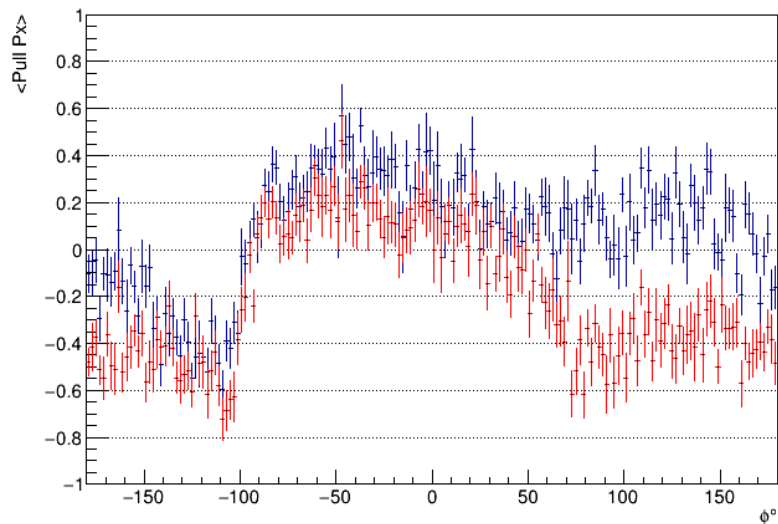
After realignment, using only FDC tracks (Run 30300):



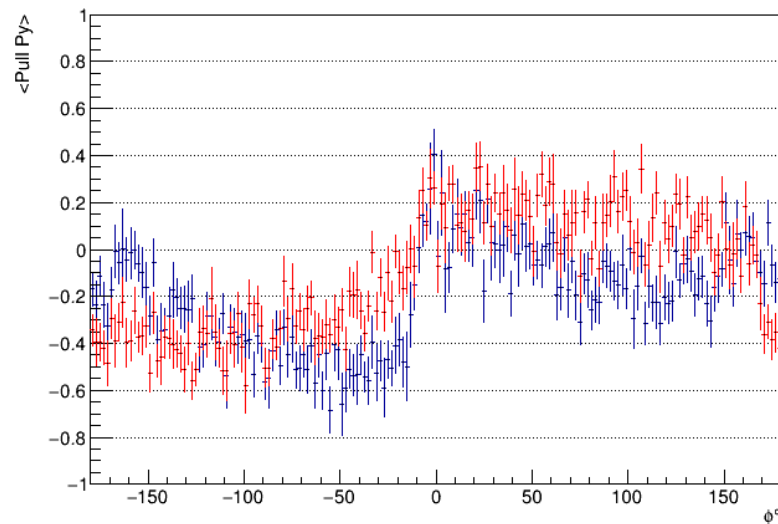
K^- pulls for φ events

Benchmark
New alignment

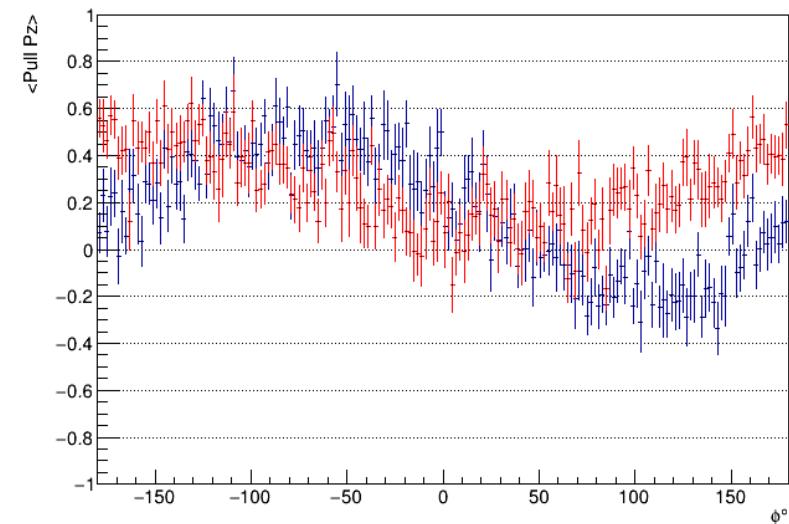
Pull Px for K^-



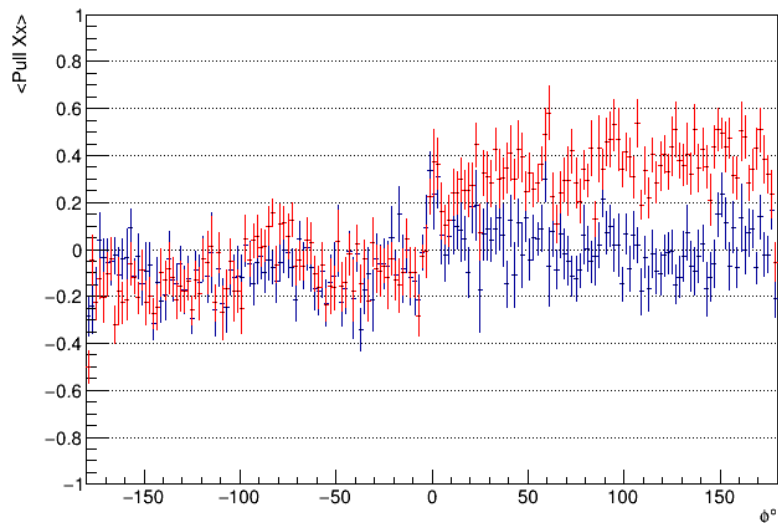
Pull Py for K^-



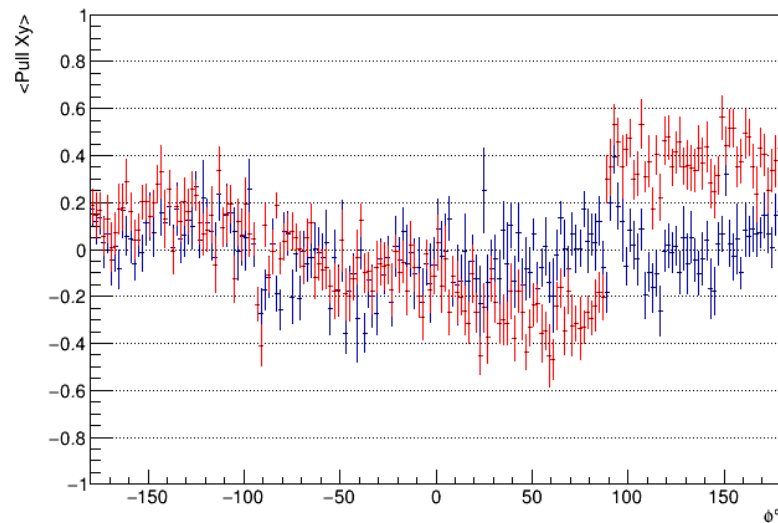
Pull Pz for K^-



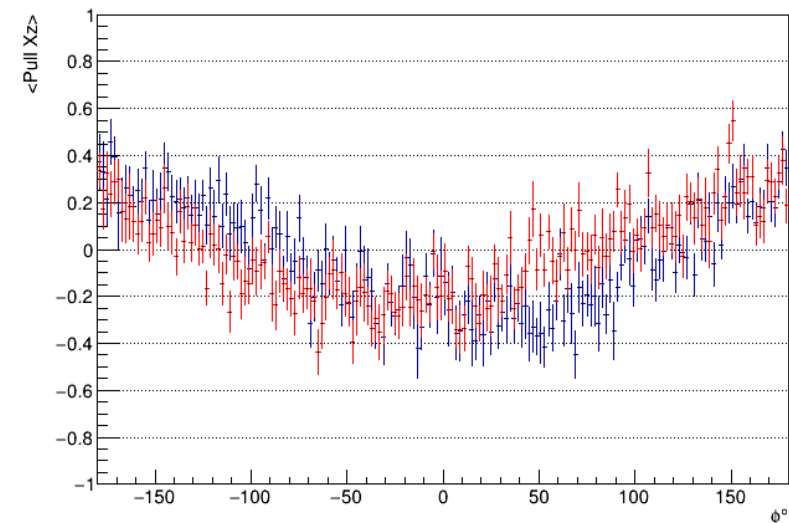
Pull Xx for K^-



Pull Xy for K^-



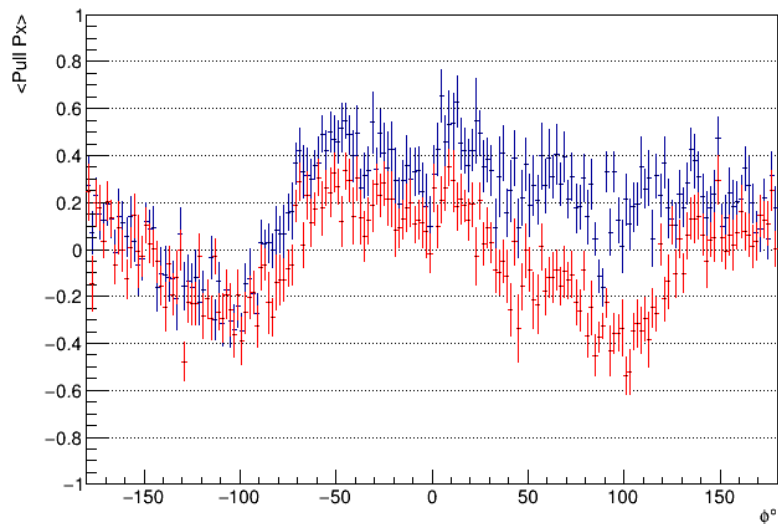
Pull Xz for K^-



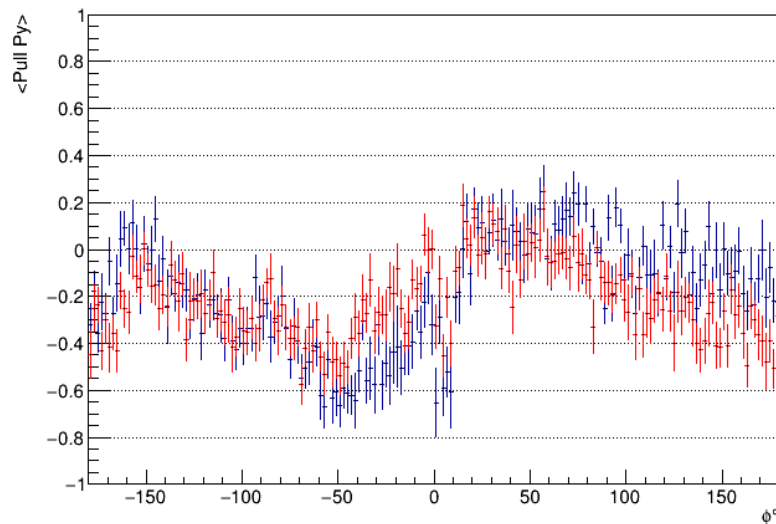
K^+ pulls for φ events

Benchmark
New alignment

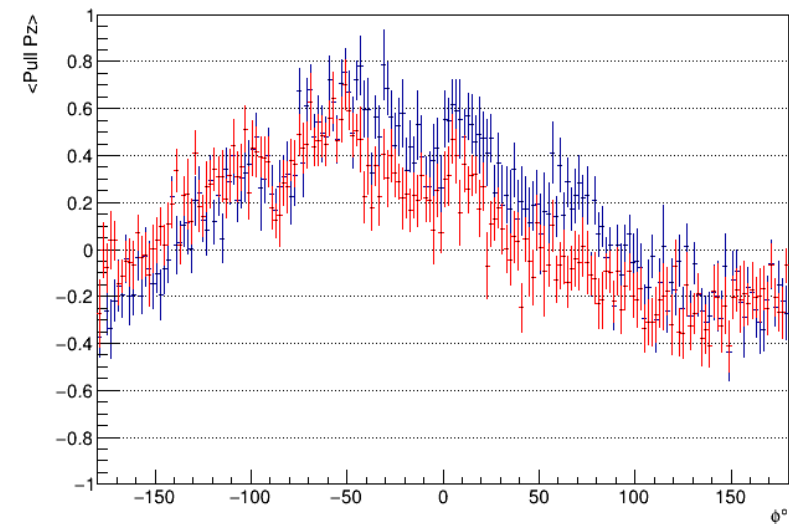
Pull Px for K+



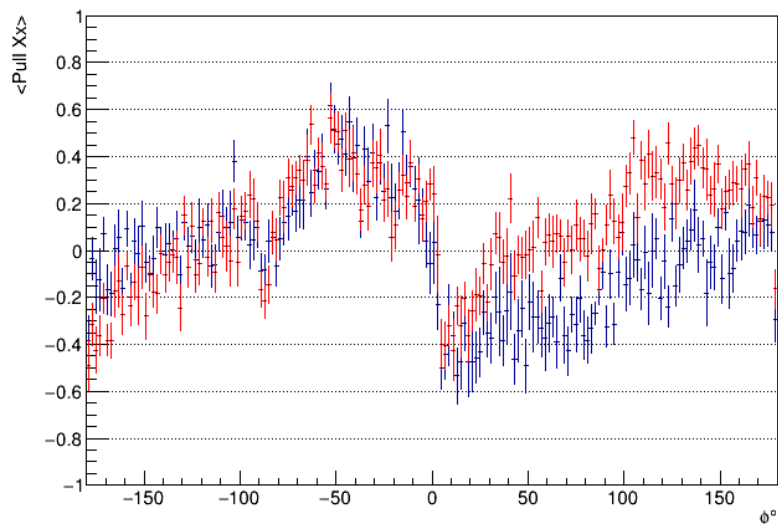
Pull Py for K+



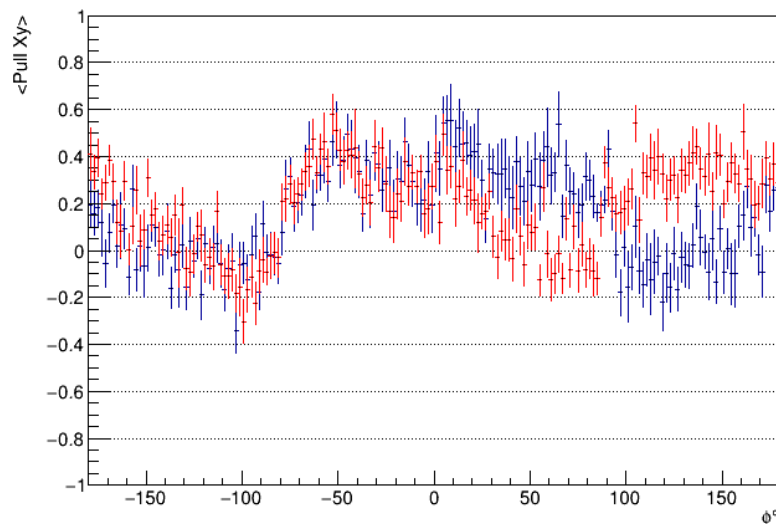
Pull Pz for K+



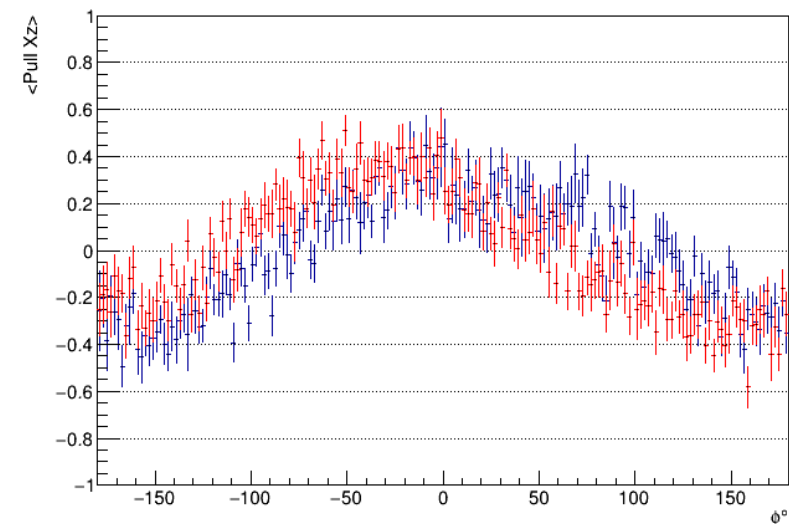
Pull Xx for K+



Pull Xy for K+



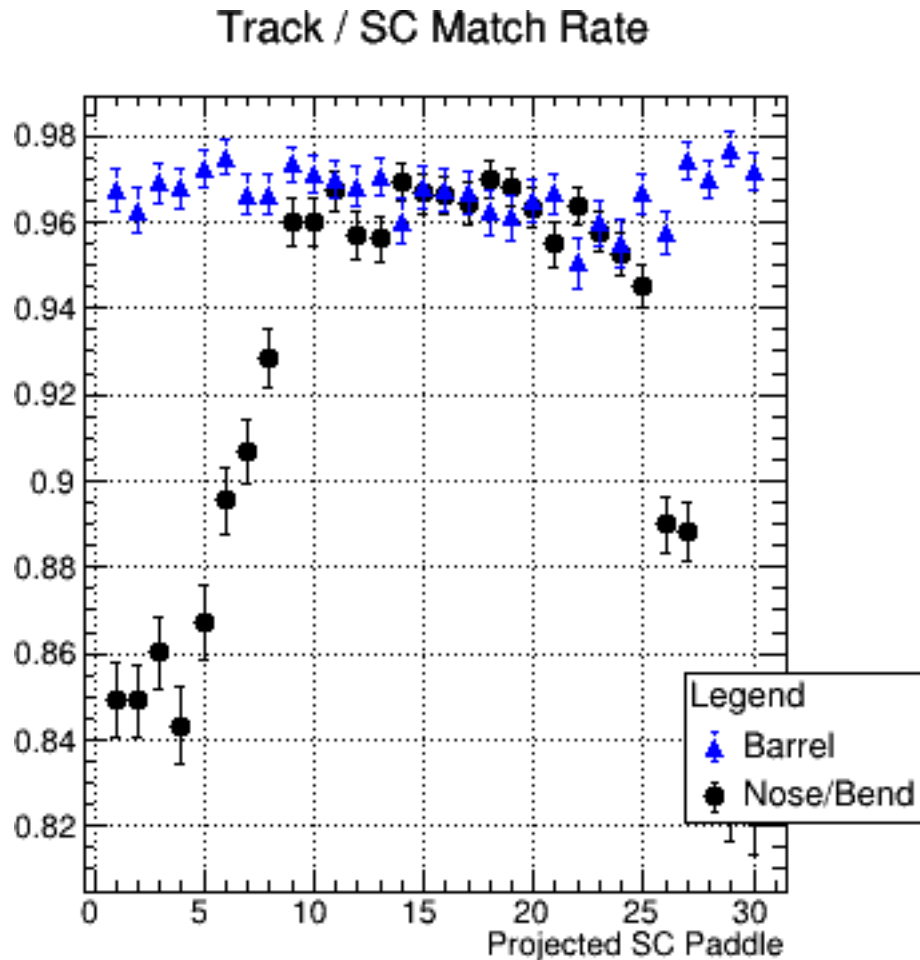
Pull Xz for K+



Matching to SC

- Naomi's ϕ filtered events for runs 30958, 30961, 30964, 30965

Using ccdb for chamber alignment and SC geometry



Using new alignment and adjusted SC geometry (needed non-zero yaw angle)

