

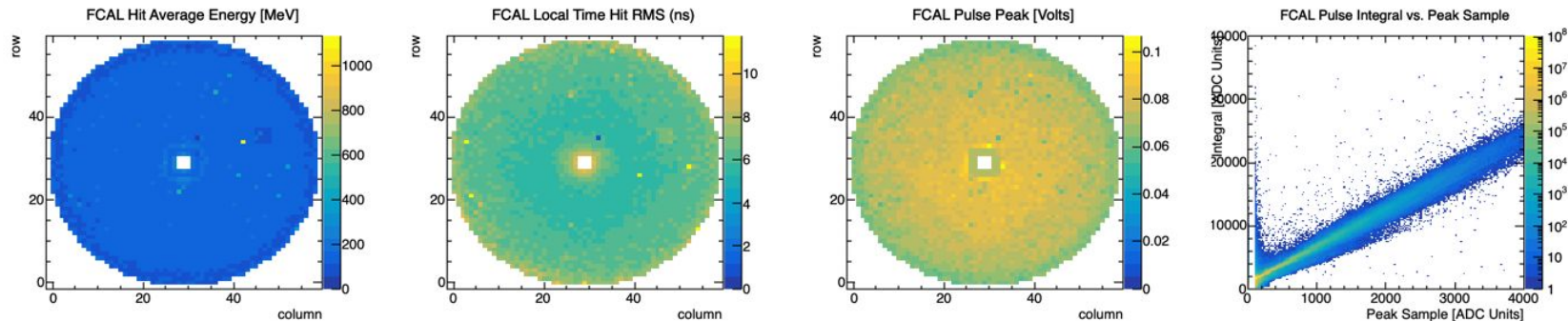
- FCAL Local Hit Time RMS: wider for outer 'rings'
- **FCAL Local Hit Time RMS: structure upper left quadrant egde**
- **FCAL Hit Average Energy: structure upper left quadrant egde**
- FCAL Neutral Shower dt vs Energy: vertical bands
- FCAL Neutral Shower dt vs Energy: horizontal bands
- FCAL Neutral Shower dt (Propagated - RF): 2cnd prompt peak at -8ns;
- dt(FCAL-RF) shifted by -8ns
- FCAL Clusters 2 inv mass different (empty target)
- FCAL Clusters Phi different (high intensity scan)

more ideas:

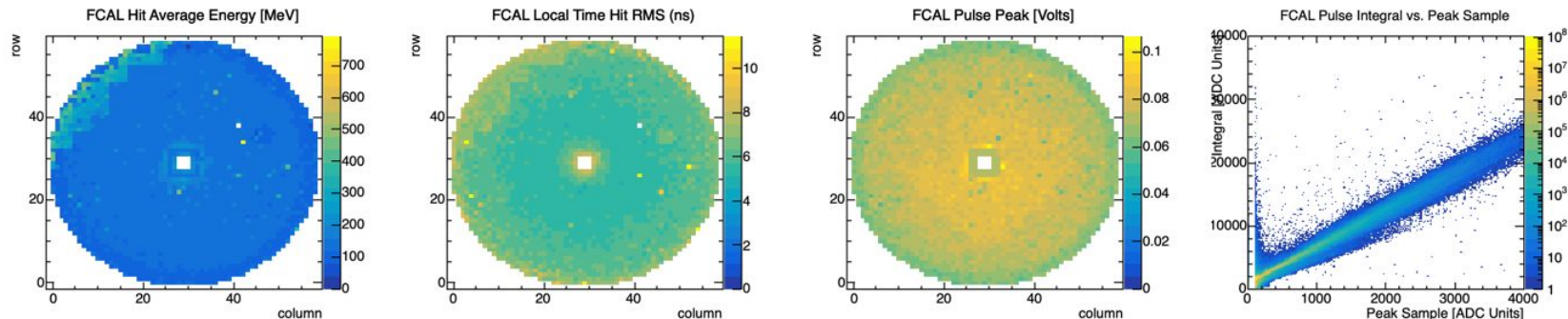
- check peak voltage (FADC)
- integral to peak ratio: sensitive to pulse shape and noise
 - need on a channel by channel basis ... rerun

FCAL monitoring RunPeriod-2019-11 ver12 - Batch 6 (runs 72068 - 72163)

Run072068



Run072104



- facl/digPeakV2D (3rd column plots) shows same feature as pedestals?!
- facl/digPeakV2D is a TProfile2D not divisible by histo fcal/digOcc2D ?
- fcal/digIntVsPeak of interest?