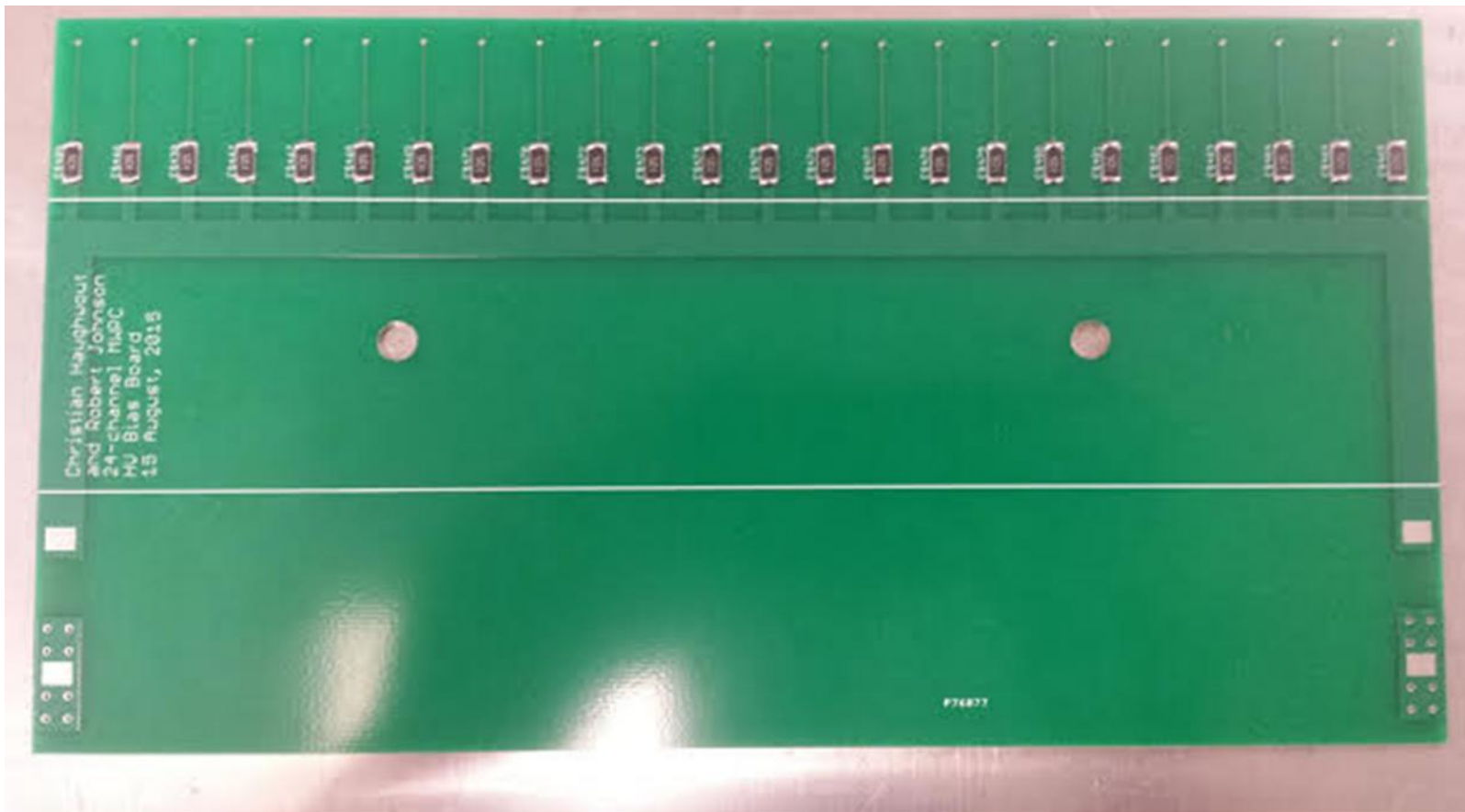
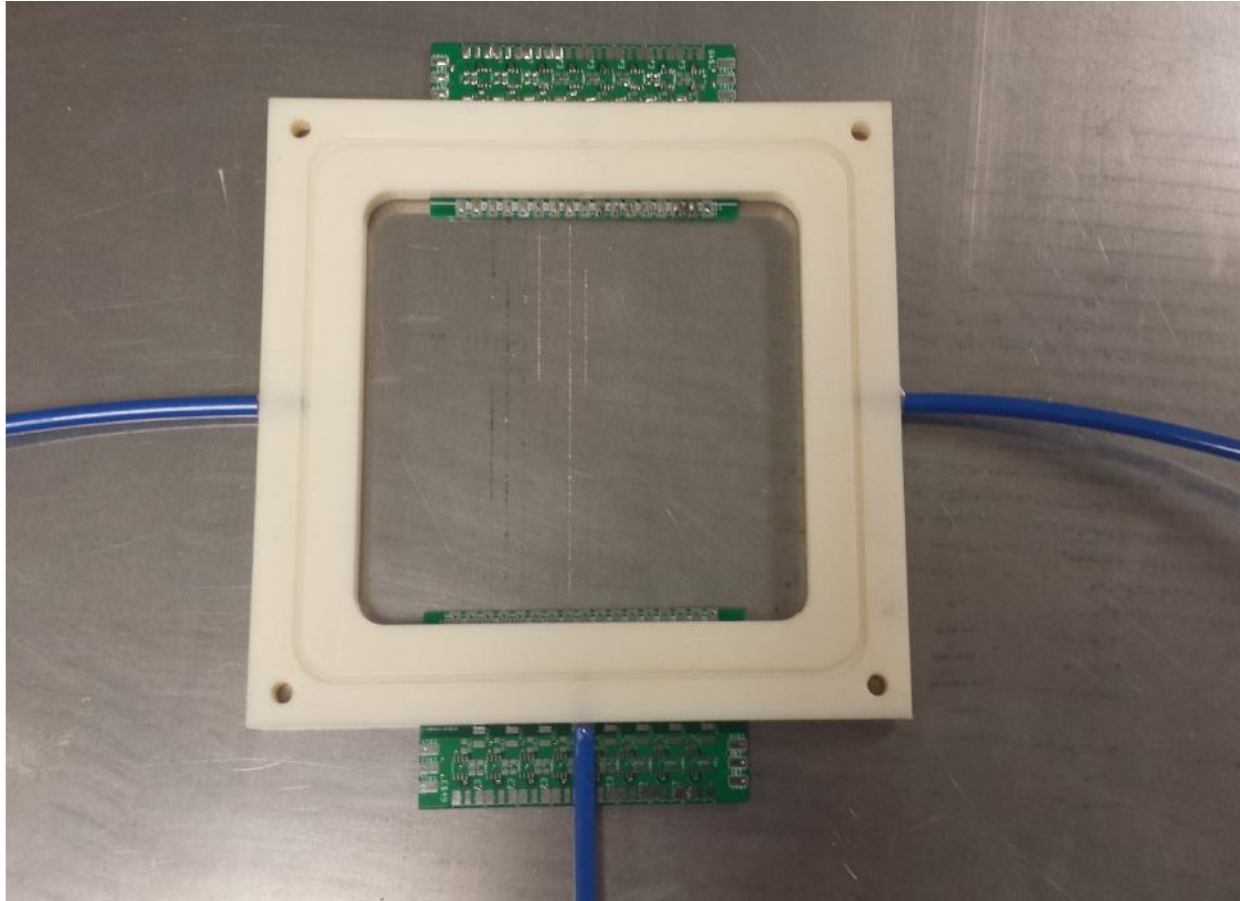


MWPC Medium Prototype Update

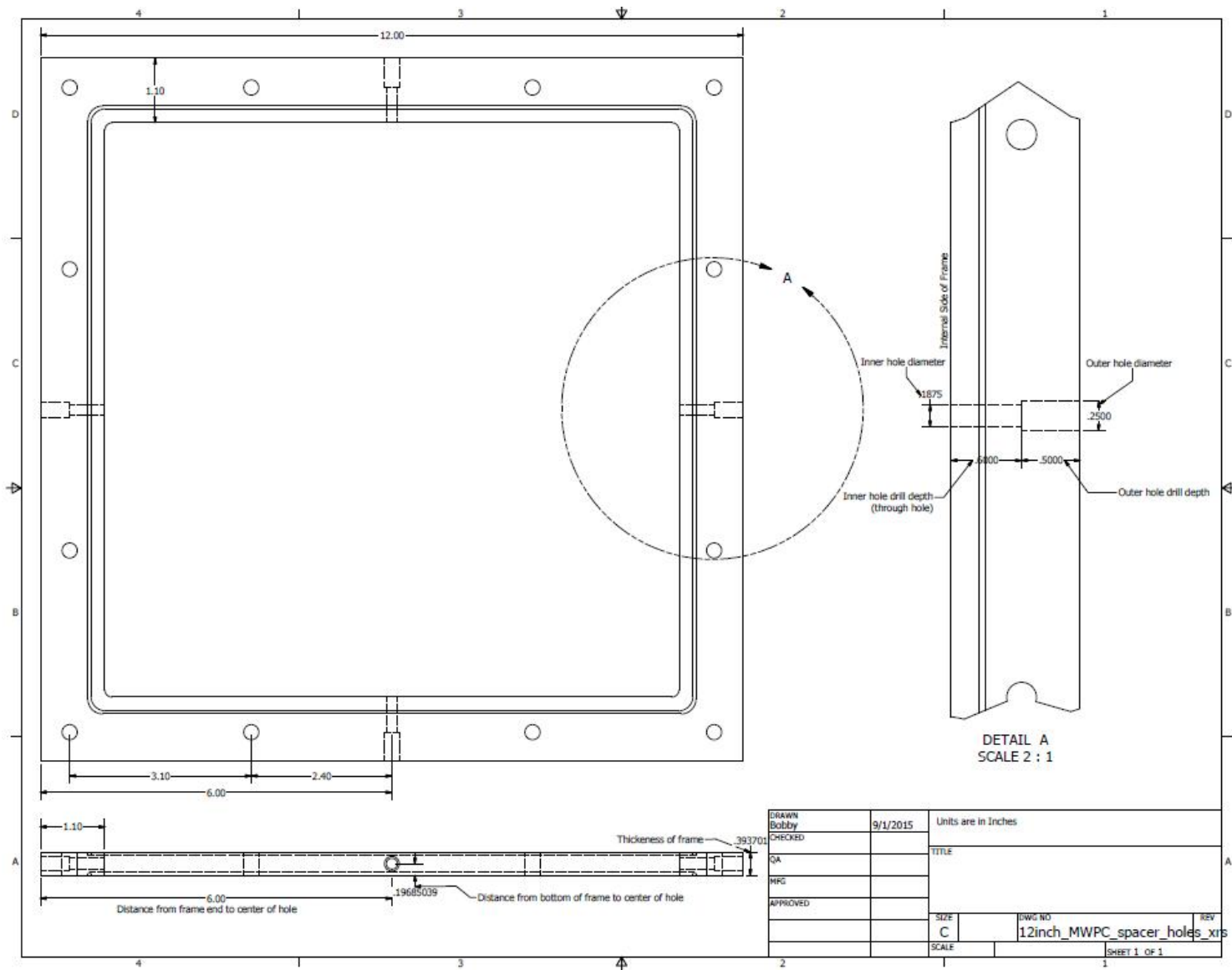
- ❖ HV bias board has arrived
- ❖ Drill holes for gas tubes in spacer frame designed
- ❖ Sense board ringing issue appears to have been solved



New HV bias board with resistors internal and through holes

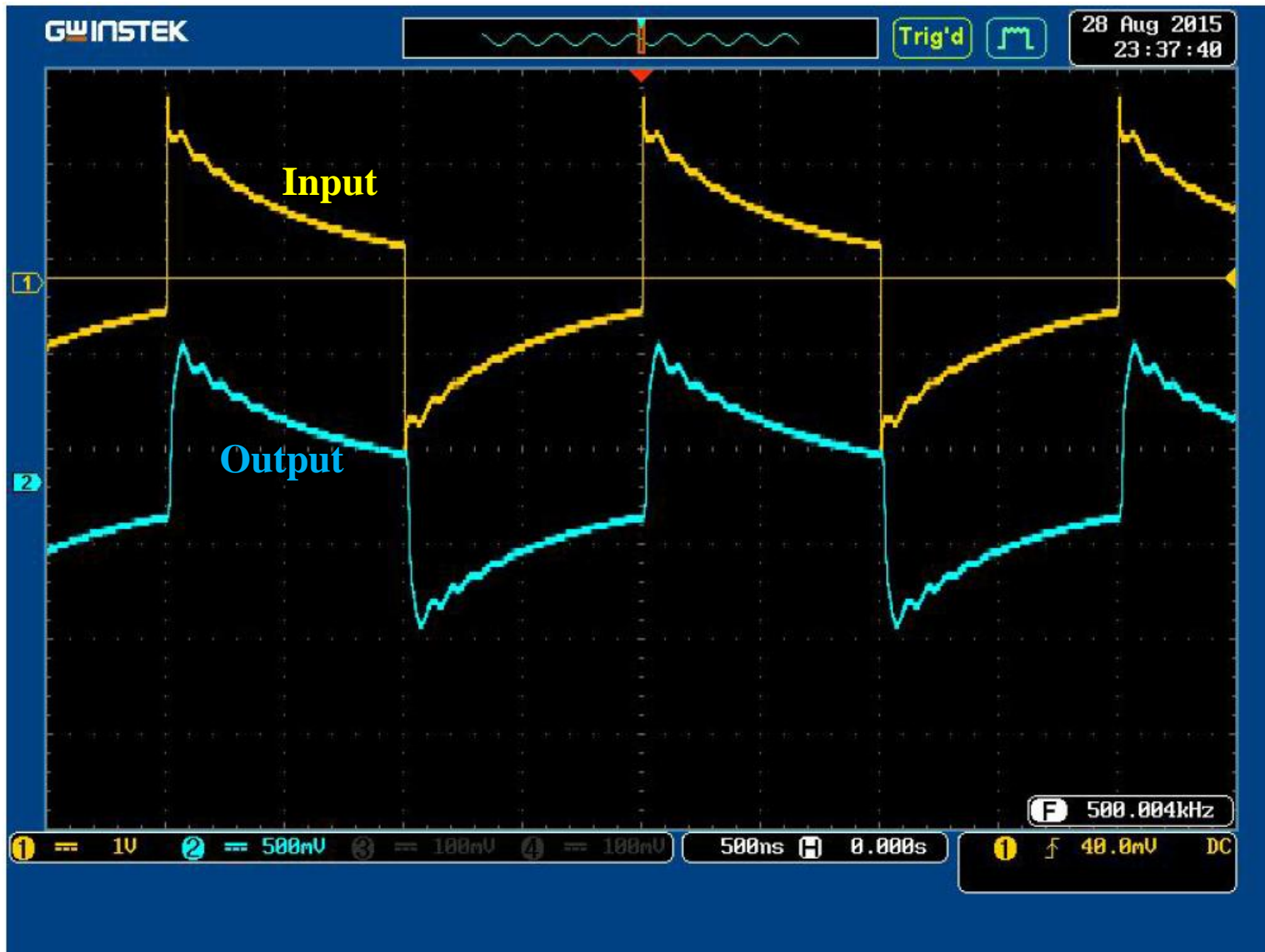


Old MWPC with blue tubes for gas inlets

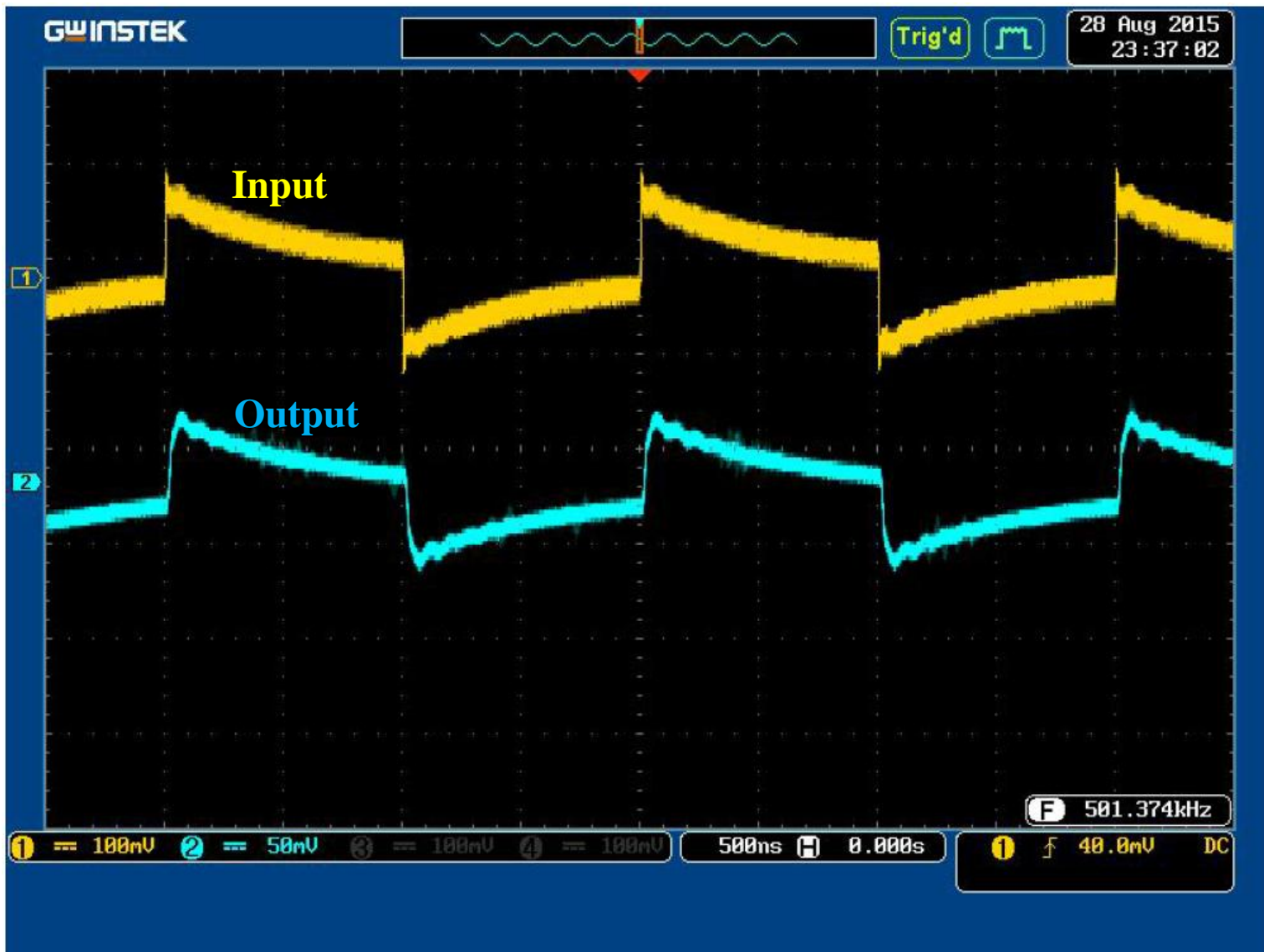


DRAWN	Bobby	9/1/2015	Units are in Inches	
CHECKED			TITLE	
QA				
MFG				
APPROVED				
			SIZE	DWG NO
			C	12inch_MWPC_spacer_holes_xrs
			SCALE	REV
SHEET 1 OF 1				

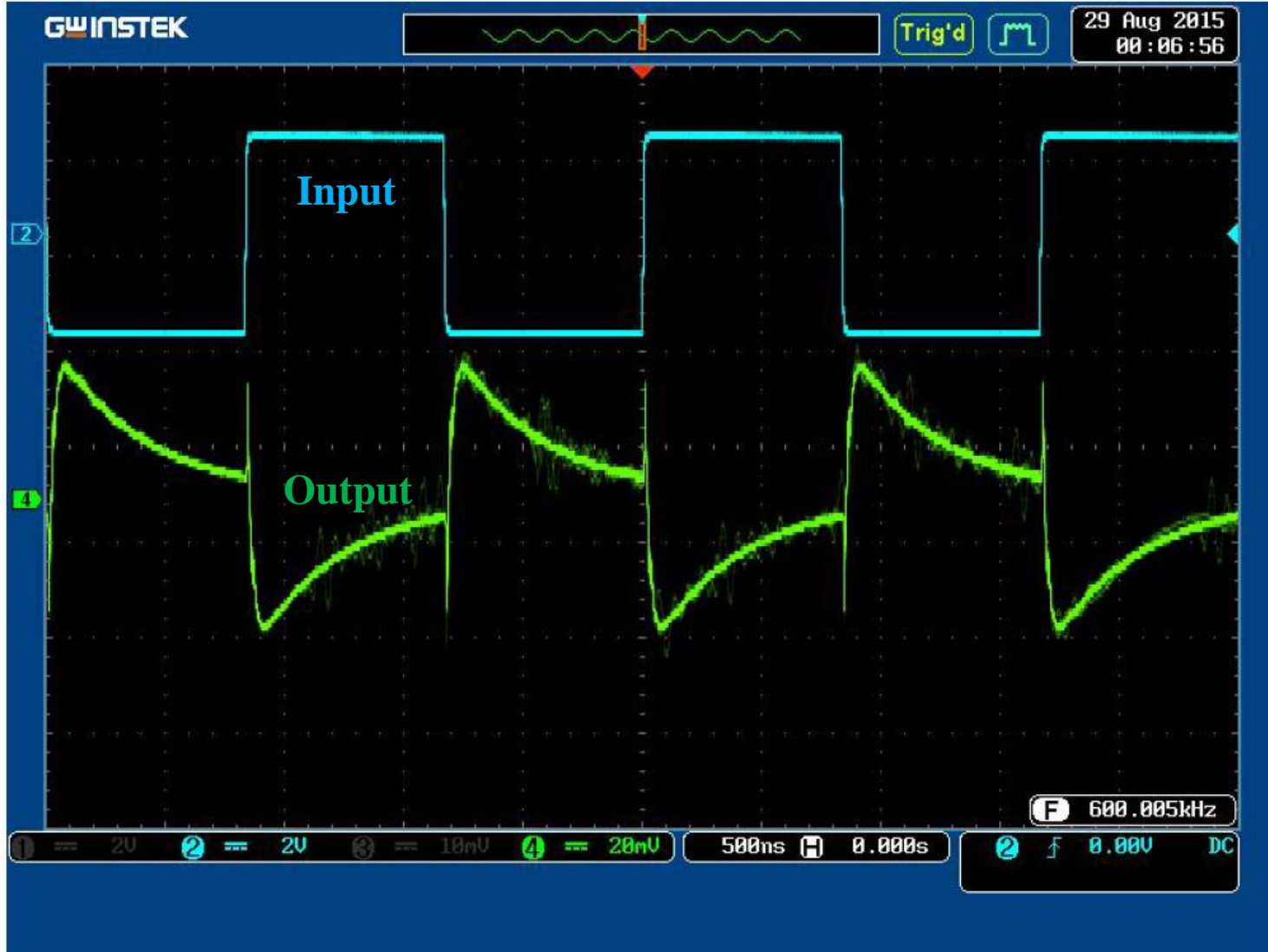
Design for drill holes for medium sized detector frame



2 V_{pp} 600 kHz square wave signal on pulser circuit



100 mVpp 600 kHz square wave signal on pulser circuit



2 Vpp 600 kHz square wave signal on pulser circuit,
input transformer removed



MDR mating connector with LEMO connectors soldered to pinouts