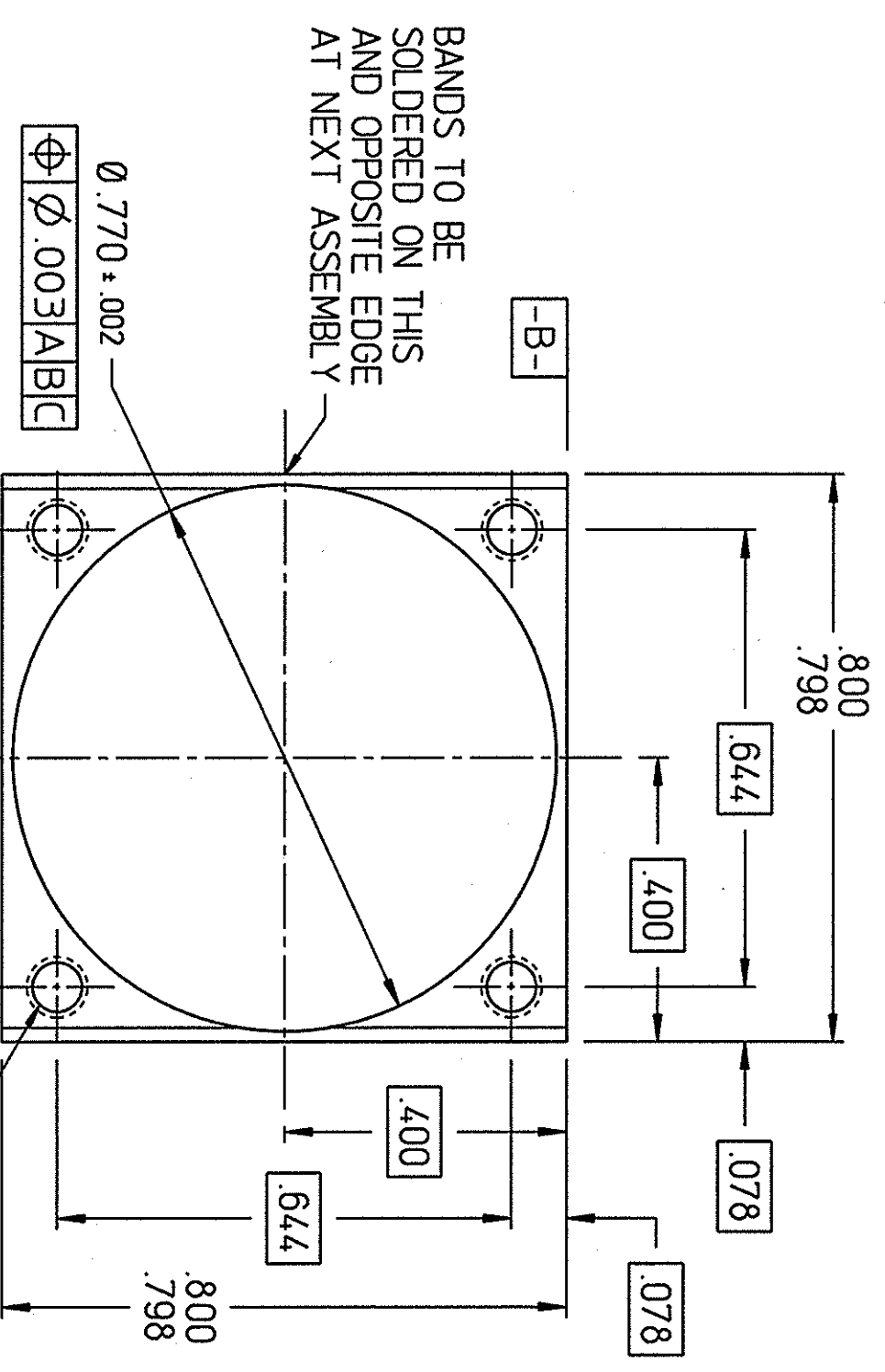
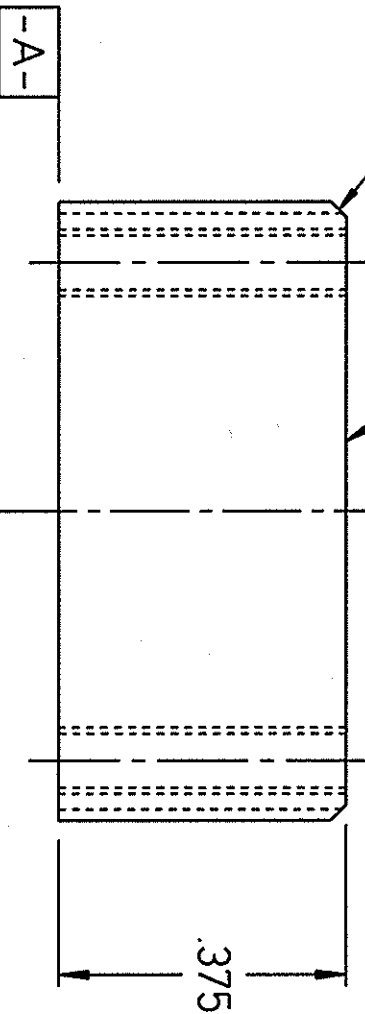


REVISIONS				
ZONE	REV.	DESCRIPTION	DATE	APPROVED
ALL	A	REMOVED SOLDERING WELLS, CHGD DIMS .803/.798 (WAS .803/.800).400 (WAS .402), Ø.555/.550 (WAS Ø.550) .078 (WAS .079) LOCATED BANDS & TOL CRYSTAL FOR NEXT ASSY., ADDED TOL TO Ø.770 DIM, REMOVED 6 CHAMFERS MRZ 2/26/02	3/12/02	D. KASHY
ALL	B	CHANGED LENGTH (WAS .250) CHAMFER (WAS .010 x 45°) REMOVED PROTOTYPE-1 FROM TITLE MRZ 7/26/02	8/5/02	Dfk



BANDS TO BE SOLDERED ON THIS AND OPPOSITE EDGE AT NEXT ASSEMBLY

THIS SIDE TOWARDS CRYSTAL
2X .020 x 45°
4X #2-56 UNC-2B THRU
Ø.005 A|B|C



DIM & TOL PER ASME Y14.5 UNLESS OTHERWISE SPECIFIED DIMENSIONS ARE IN INCHES TOLERANCES ARE: FRACTIONS DECIMAL ANGLES * N/A XX * N/A * N/A XXX * .005 * N/A		CADD I.D. NO. /WBS/6/zorecky/66000 /3400/6813b03503_revB	
MATERIAL BRASS ALLOY 260		APPROVALS DATE	
FINISH 63 UNLESS OTHERWISE NOTED DEBURR & BREAK ALL SHARP EDGES		DRAWN M. ZARECKY	11/12/01
DO NOT SCALE DRAWING		CHECKED D. KASHY	11/26/01
		APPROVED D. KASHY	11/26/01
		APPROVED D. KASHY	11/26/01
Thomas Jefferson National Accelerator Facility UNITED STATES DEPARTMENT OF ENERGY PRIMEX HYCAL LEAD/TUNGSTATE CRYSTAL COUNTER JACKING PLATE			
SIZE/DWG. NO. B 66813-B-03503		REV. B	
SCALE 4X		USED ON ASSY. NO. 66813-D-03500 SHEET 1 OF 1	