

# Improving $b_1 \pi$ full event reconstruction

March 9, 2010 David Lawrence

## In a nutshell:

- ◆ Options to draw several more reconstructed objects added to *hdview2*
- ◆ Merging of multiple DFCALCluster objects when creating DFCALPhoton objects
- ◆ Merging of multiple DBCALShower objects when creating DBCALPhoton objects
- ◆ Improved matching of reconstructed photons to charged tracks

Source: hdgeant\_smeared.hddm

View Controls

ZOOM   Transverse Coordinates  
 x/y  
 r/phi

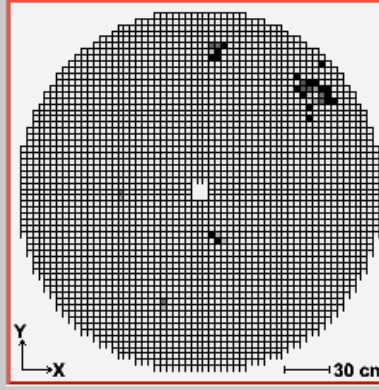
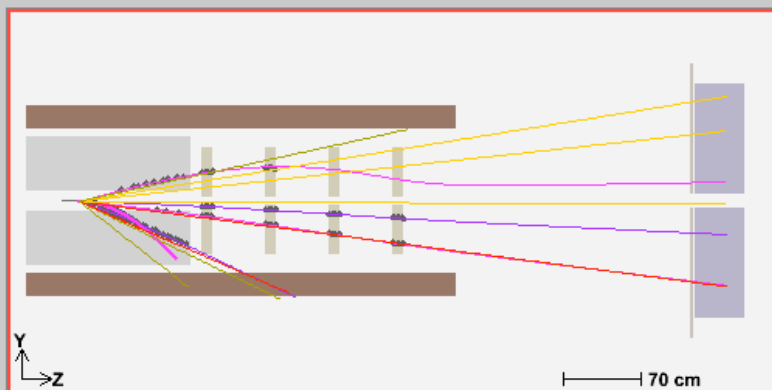
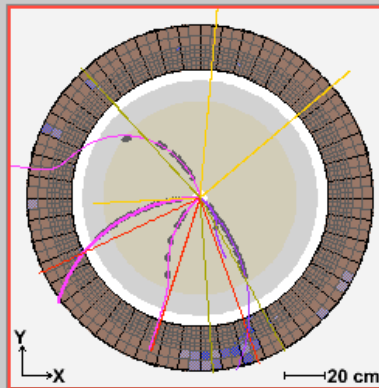
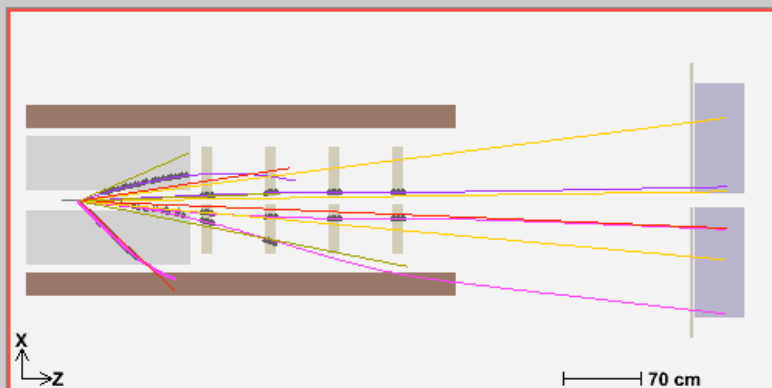
Event Controls

continuous  
  delay: 0.25

Info

Run: -----  
Event: 1

Inspectors



Track Draw Options

DTrackCandidate: FDC  
 DTrackWireBased: <default>  
 DTrackTimeBased: <default>  
 DChargedTrack: <default>  
 DPhoton  
 DMCThrown  
 DMCTrajectoryPoint

Hit Draw Options

CDC  
 CDC Drift Time  
 CDCTruth  
 FDC Wire  
 FDC Pseudo  
 FDCTruth  
 TOF  
 TOFTruth  
 FCAL  
 BCAL

Track Info

Thrown

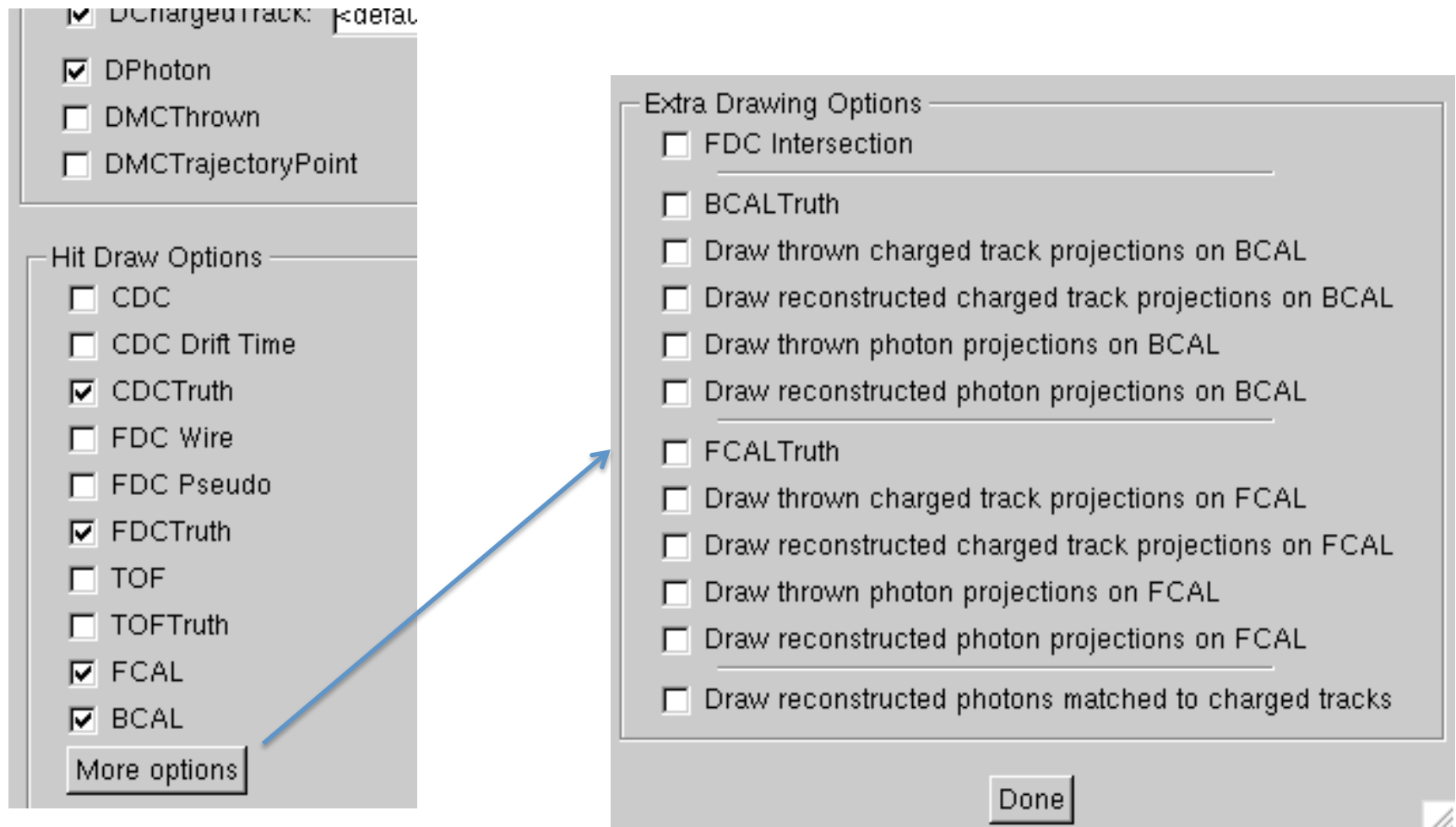
trk:	type:	p:	theta:	phi:	z:
1	pi+	0.9384	15.91	1.805	65
2	pi-	1.649	3.647	5.788	65
3	gamma	2.587	9.561	0.6973	65
4	gamma	0.4627	9.286	1.47	65
5	pi+	1.989	8.653	3.85	65
6	pi-	1.128	25.52	5.509	65

Reconstructed

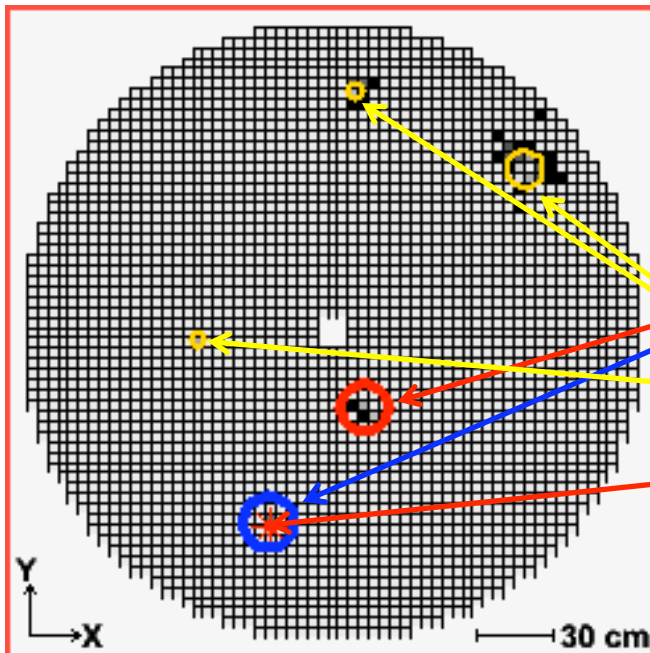
trk:	type:	p:	theta:	phi:	z:	chisq/Ndof:	Ndof:	FOM:
1	pi+	1.977	8.557	3.85	63.99	0.1534	38	.94960
2	proton+	1.979	8.558	3.849	64.02	0.1359	38	.84660
3	pi-	1.613	3.66	5.766	66.62	3.181	39	1815e-
4	pi-	1.169	25.7	5.512	65.69	2.499	16	00680e
5	pi+	0.9552	16.32	1.832	67.45	0.2408	12	.99408
6	proton+	0.8692	16.38	1.787	67.64	0.6851	14	.16451

FOM:

# Additional drawing options added to *hdview2*



# *hdview2* FCAL Elements



- FCALTruth
- Draw thrown charged track projections on FCAL
- Draw reconstructed charged track projections on FCAL
- Draw thrown photon projections on FCAL
- Draw reconstructed photon projections on FCAL
- Draw reconstructed photons matched to charged tracks

# DFCALPhoton merging

*FCAL/cluster\_merging*

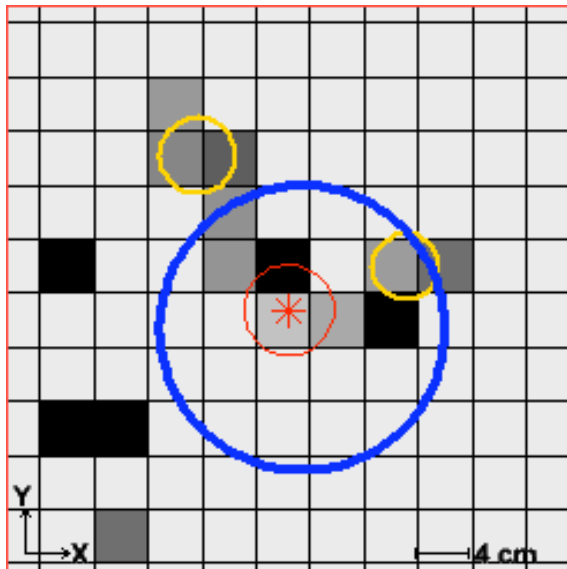
# Minimum separation between 2 clusters for  
# them NOT to be merged  
MIN\_CLUSTER\_SEPARATION15.0 # centimeters

*PID/photon\_track\_matching*

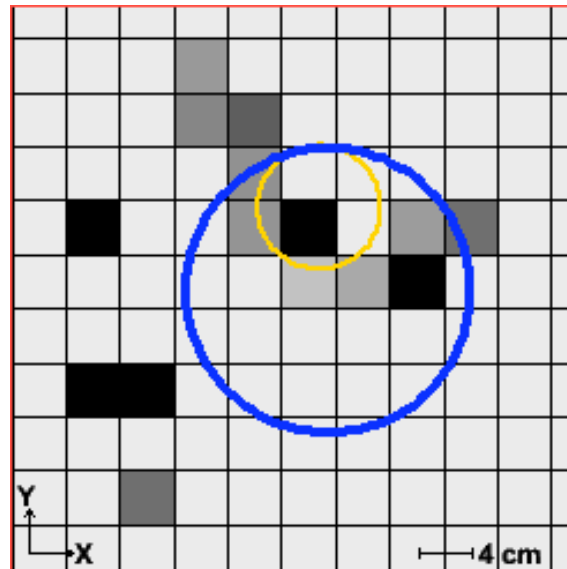
# BCAL is matched in both phi and z on BCAL surface  
DELTA\_PHI\_BCAL0.15# radians  
DELTA\_Z\_BCAL15.0# cm  
MEAN\_PHI\_BCAL0.0# radians  
MEAN\_Z\_BCAL0.0# cm

# FCAL is matched in distance on FCAL surface  
DELTA\_R\_FCAL18.0# cm  
MEAN\_R\_FCAL0.0# cm

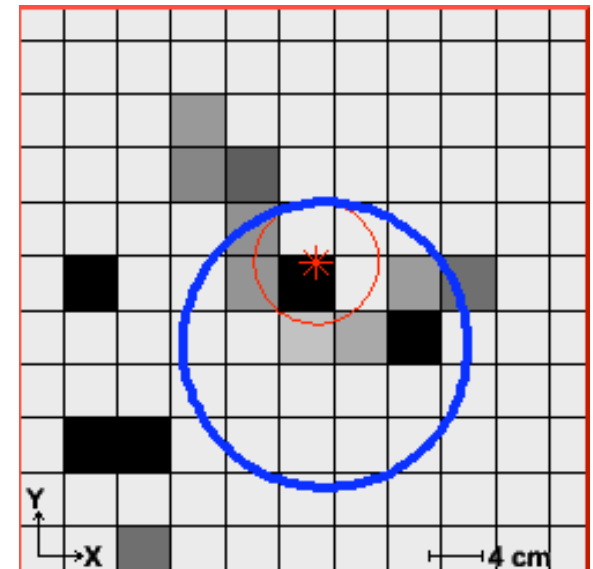
3 “photons” reconstructed.  
1 flagged as matching a  
charged track



Photons merged, but now  
centroid out of range for  
matching with charged track



Single photon properly  
flagged for matching track

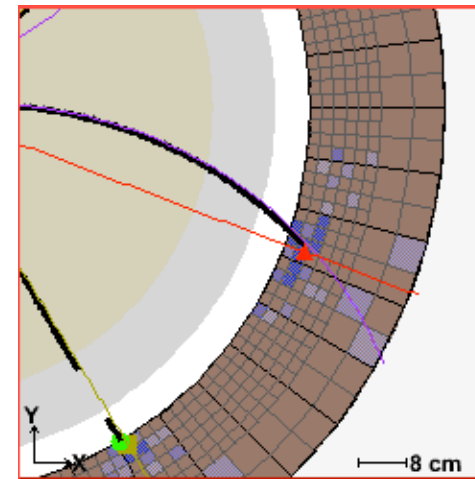
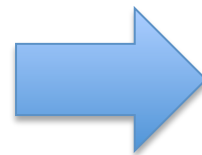
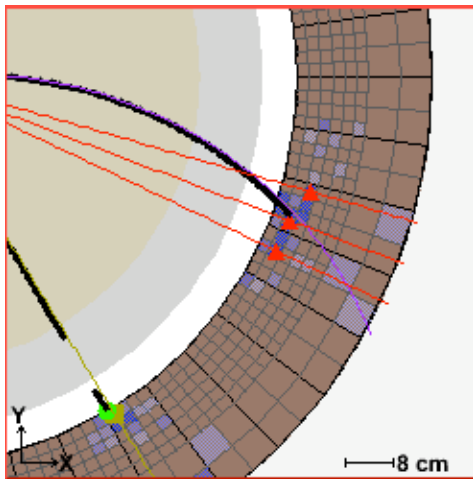
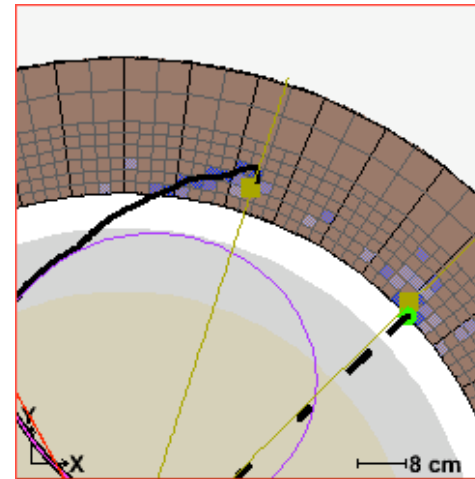
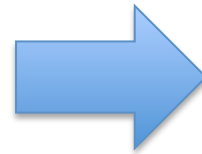
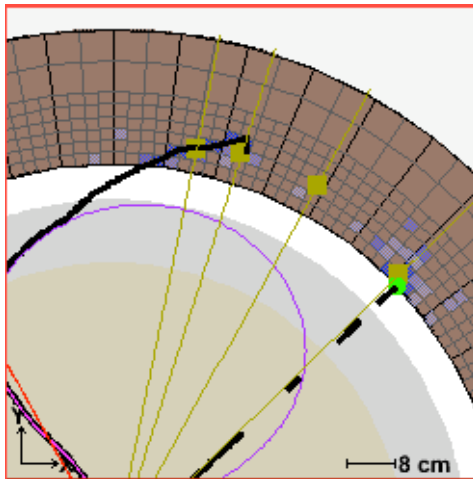


*release-2010-02-11*

# DBCAL Photon merging

*BCAL/cluster\_merging*

```
# Minimum separation between 2 clusters for them NOT to be merged  
MIN_CLUSTER_SEPARATION_XY15.0 # centimeters  
MIN_CLUSTER_SEPARATION_Z30.0 # centimeters
```



# Almost perfect ...

Extra BCAL photon

