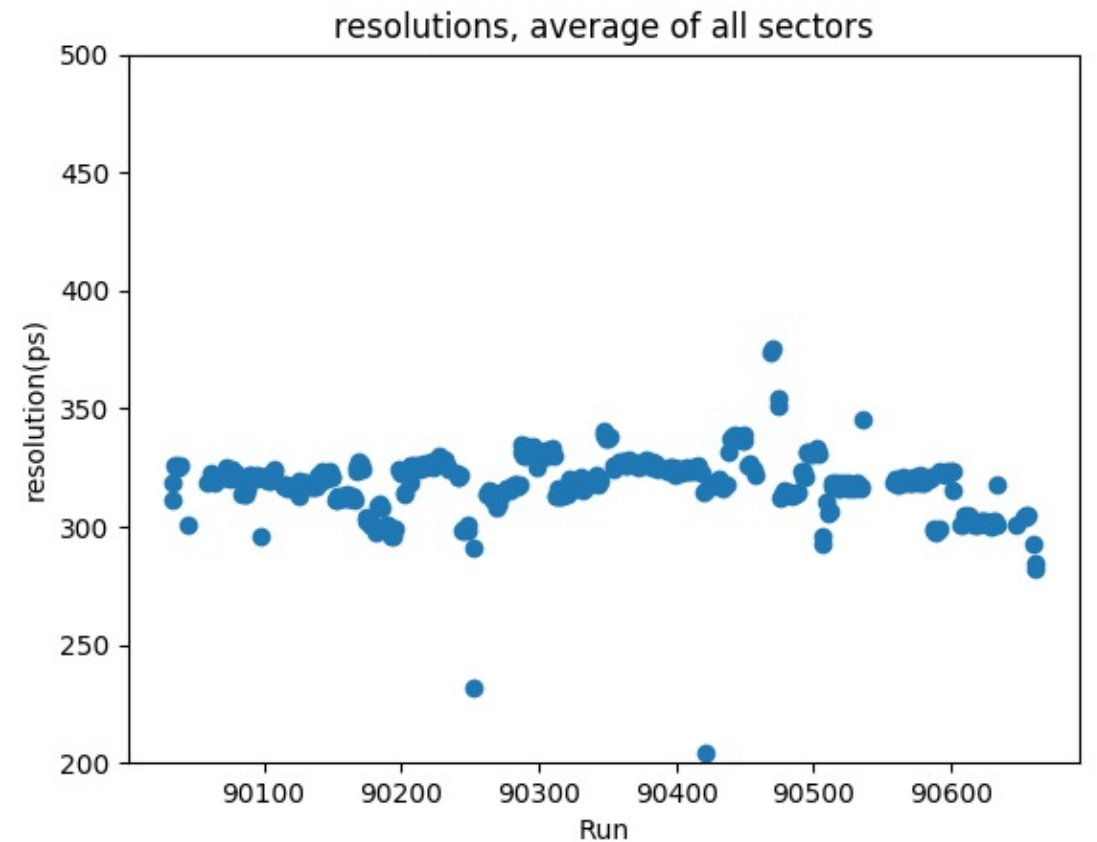
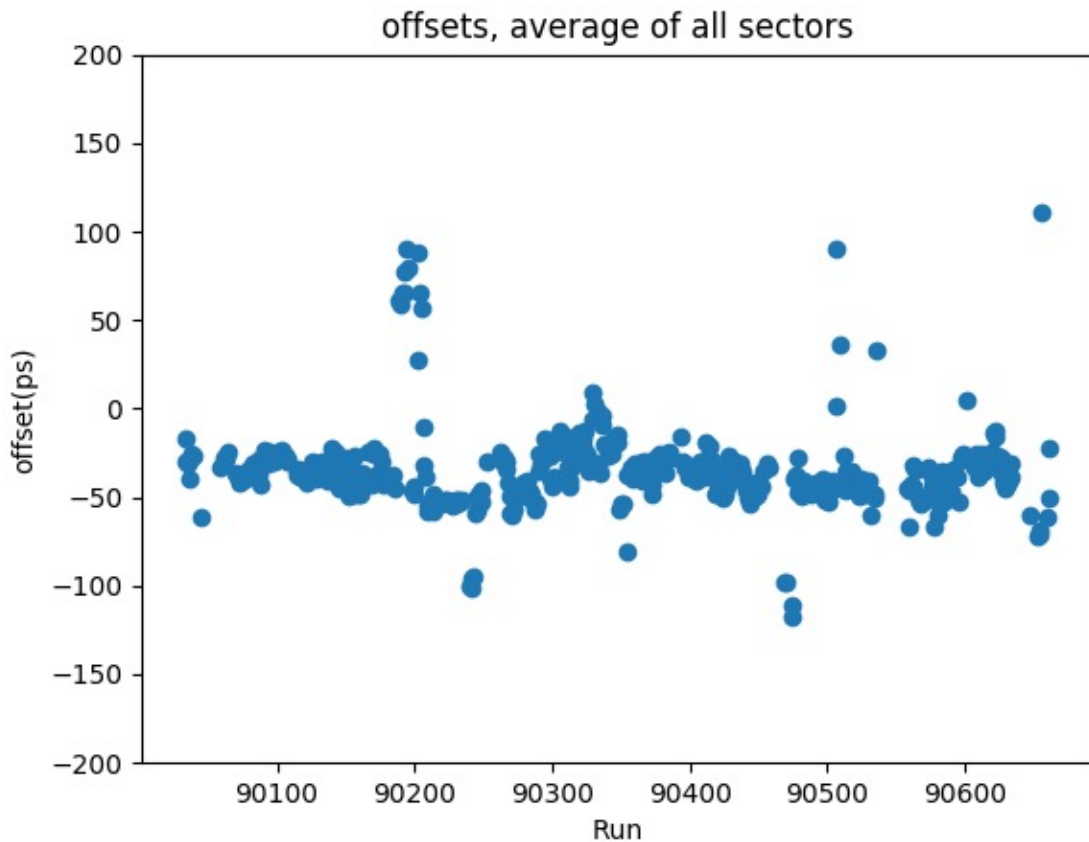


Start counter calibration validation for SRC/CT experiment

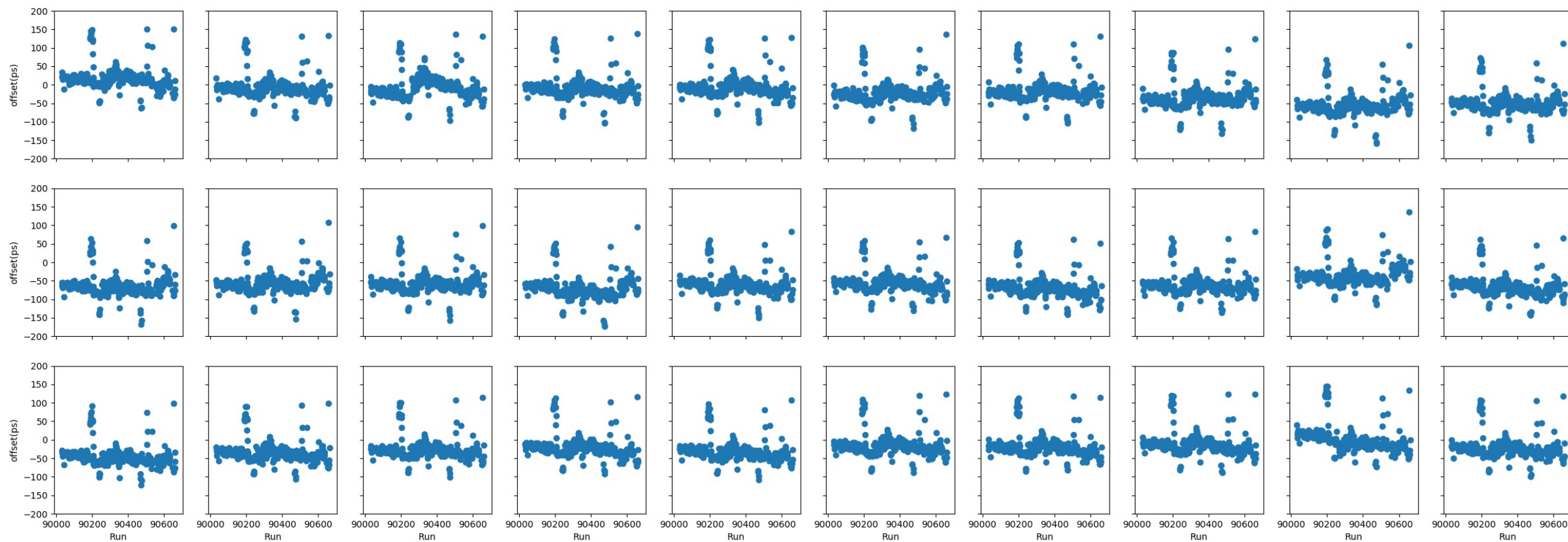
- Timing offsets (from RF) and resolutions, averaged across all 30 channels
- Almost all the runs' offsets are below 100 ps and resolutions are below 350 ps



Start counter calibration validation for SRC/CT experiment

-Timing offsets (from RF), 30 individual channels

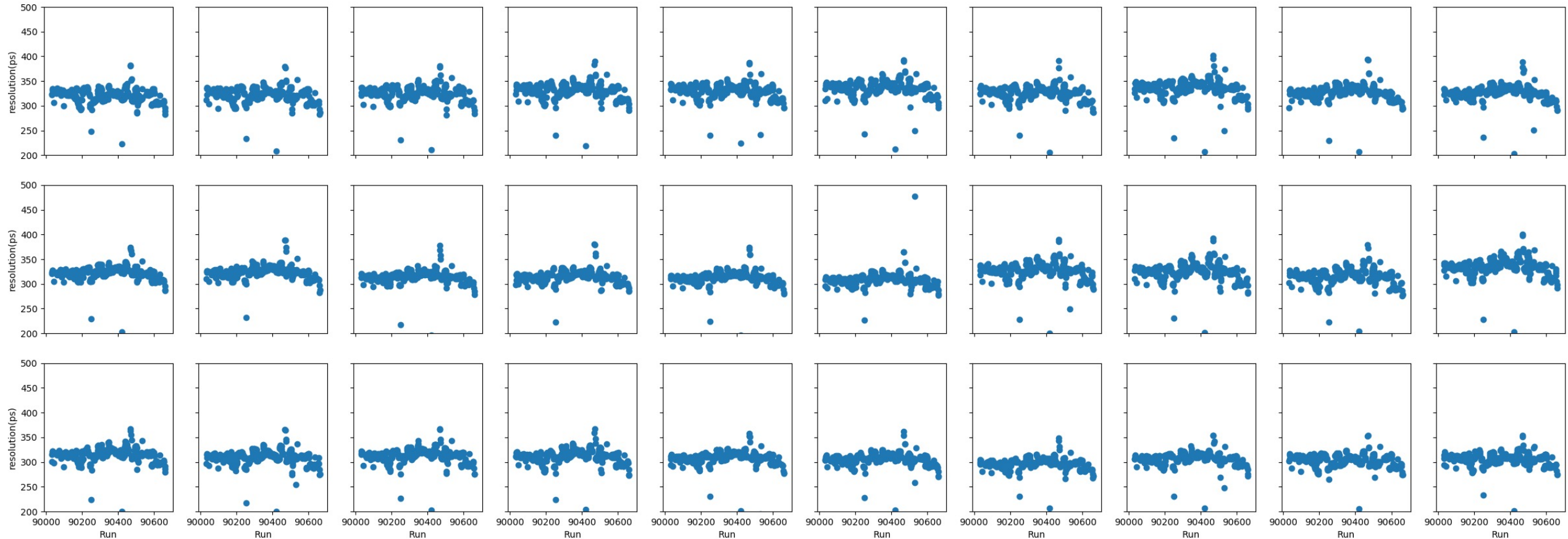
offsets, individual sectors



Start counter calibration validation for SRC/CT experiment

-Timing resolutions, 30 individual channels

resolutions, individual sectors



Start counter calibration validation for SRC/CT experiment

-Some problematic runs under investigation

```
90140 file doesn't exist
90186 file doesn't exist
90240 average offset is 100.25 ps, greater than 100 ps
90241 average offset is 101.12 ps, greater than 100 ps
90252 average offset is 1463.76 ps, greater than 100 ps
90252 average resolution is 231.72 ps, smaller than 250 ps
90421 average offset is 1580.91 ps, greater than 100 ps
90421 average resolution is 204.24 ps, smaller than 250 ps
90469 average resolution is 373.94 ps, greater than 350 ps
90470 average resolution is 375.47 ps, greater than 350 ps
90471 file doesn't exist
90474 average offset is 117.71 ps, greater than 100 ps
90474 average resolution is 354.72 ps, greater than 350 ps
90475 average offset is 110.90 ps, greater than 100 ps
90475 average resolution is 350.84 ps, greater than 350 ps
90509 file doesn't exist
90531 average offset is 2260.43 ps, greater than 100 ps
90531 average resolution is 550.94 ps, greater than 350 ps
90615 file doesn't exist
90616 file doesn't exist
90656 average offset is 110.70 ps, greater than 100 ps
```