

FCAL monitoring II

RunPeriod-2019-11 ver12 - Batch 5-8

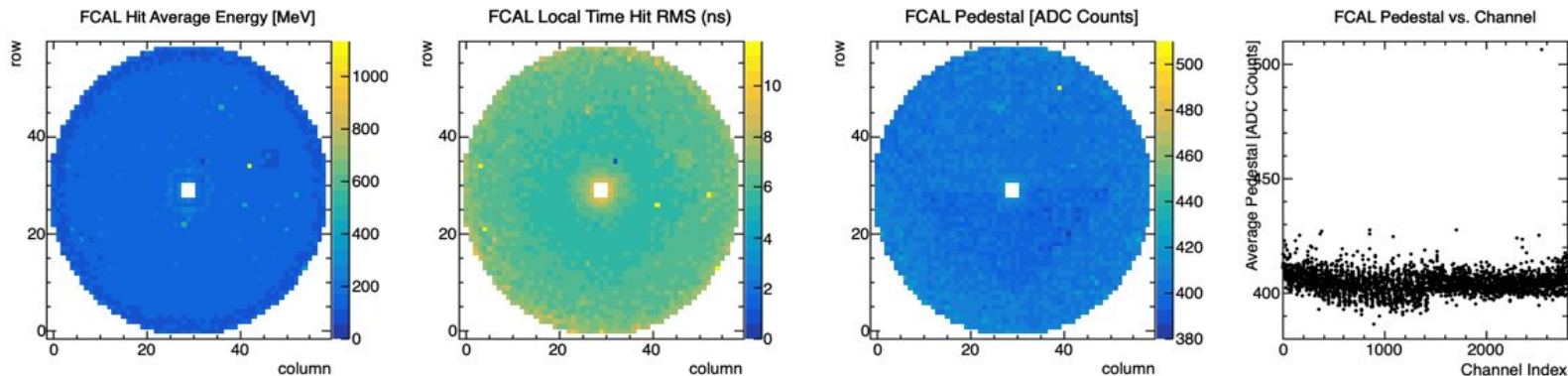
- FCAL Local Hit Time RMS: wider for outer 'rings'
- **FCAL Local Hit Time RMS: structure upper left quadrant egde**
- **FCAL Hit Average Energy: structure upper left quadrant egde**
- FCAL Neutral Shower dt vs Energy: vertical bands
- FCAL Neutral Shower dt vs Energy: horizontal bands
- FCAL Neutral Shower dt (Propagated - RF): 2cnd prompt peak at -8ns;
- dt(FCAL-RF) shifted by -8ns
- FCAL Clusters 2 inv mass different (empty target)
- FCAL Clusters Phi different (high intensity scan)

ideas:

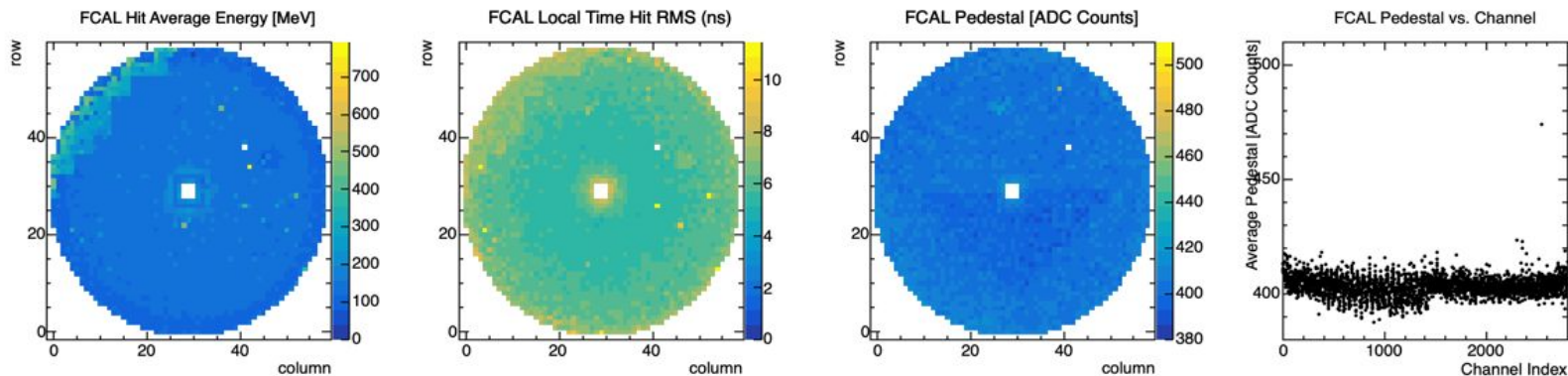
- Pedestals -- apparently 'not the cause but need 'fixing' (calib)
- LEDs -- long standing issue of high rate effects --> check pi0 mass
- Light leaks -- look at DIRC commissioning runs with lights on/off
- crate fan failure / temperature ?

FCAL monitoring RunPeriod-2019-11 ver12 - Batch 6 (runs 72068 - 72163)

Run072068



Run072104

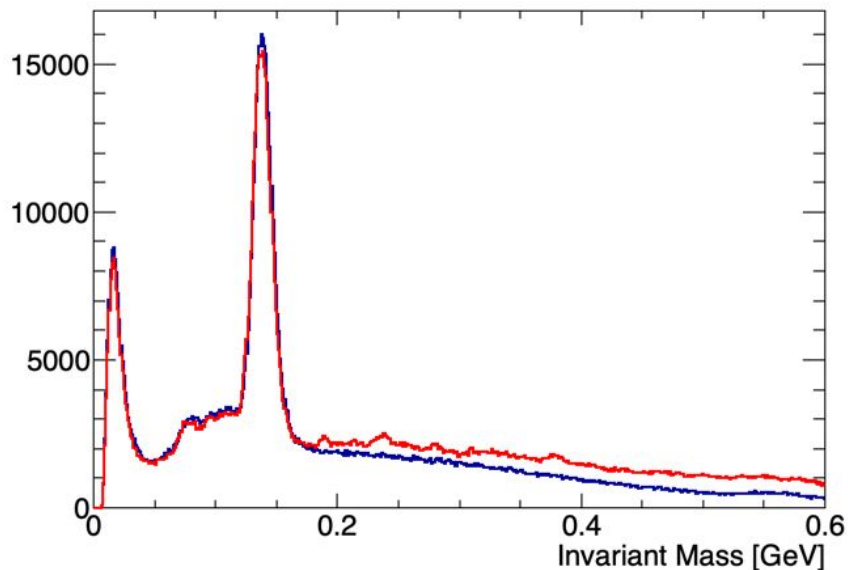


FCAL monitoring RunPeriod-2019-11 ver12 - Batch 6 (runs 72068 - 72163)

Run072068

Run072104

FCAL 2 Cluster Invariant Mass $E > 1$ GeV



FCAL 2 Cluster Invariant Mass $E > 1$ GeV

