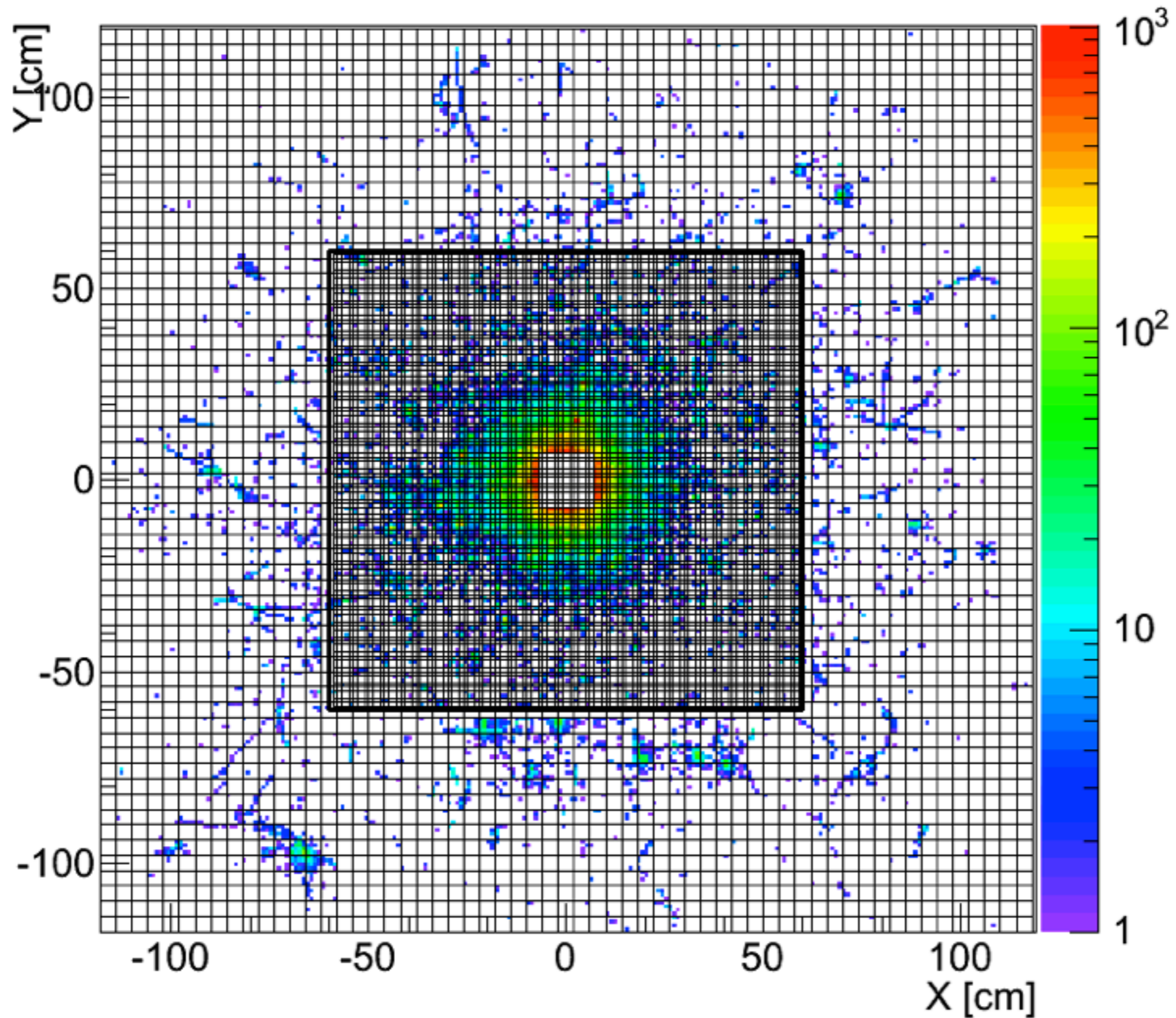


# Conditions: luminosity = $1.1 \times 10^8$ tagged photons per second EM background simulations only

FCAL Total Radiation Dose over all z [(kRad/year)/(beam rate in GHz)]



# Conditions: luminosity = $1.1 \times 10^8$ tagged photons per second EM background simulations only

$z = 626 - 627$  cm ( 2cm from the front of PbGlass)

$z = 653 - 654$  cm ( 2cm from the front of PbWO4)

FCAL Radiation Dose in  $z = 626$  to  $627$  cm [(kRad/year)/(beam rate in GHz)]

FCAL Radiation Dose in  $z = 653$  to  $654$  cm [(kRad/year)/(beam rate in GHz)]

