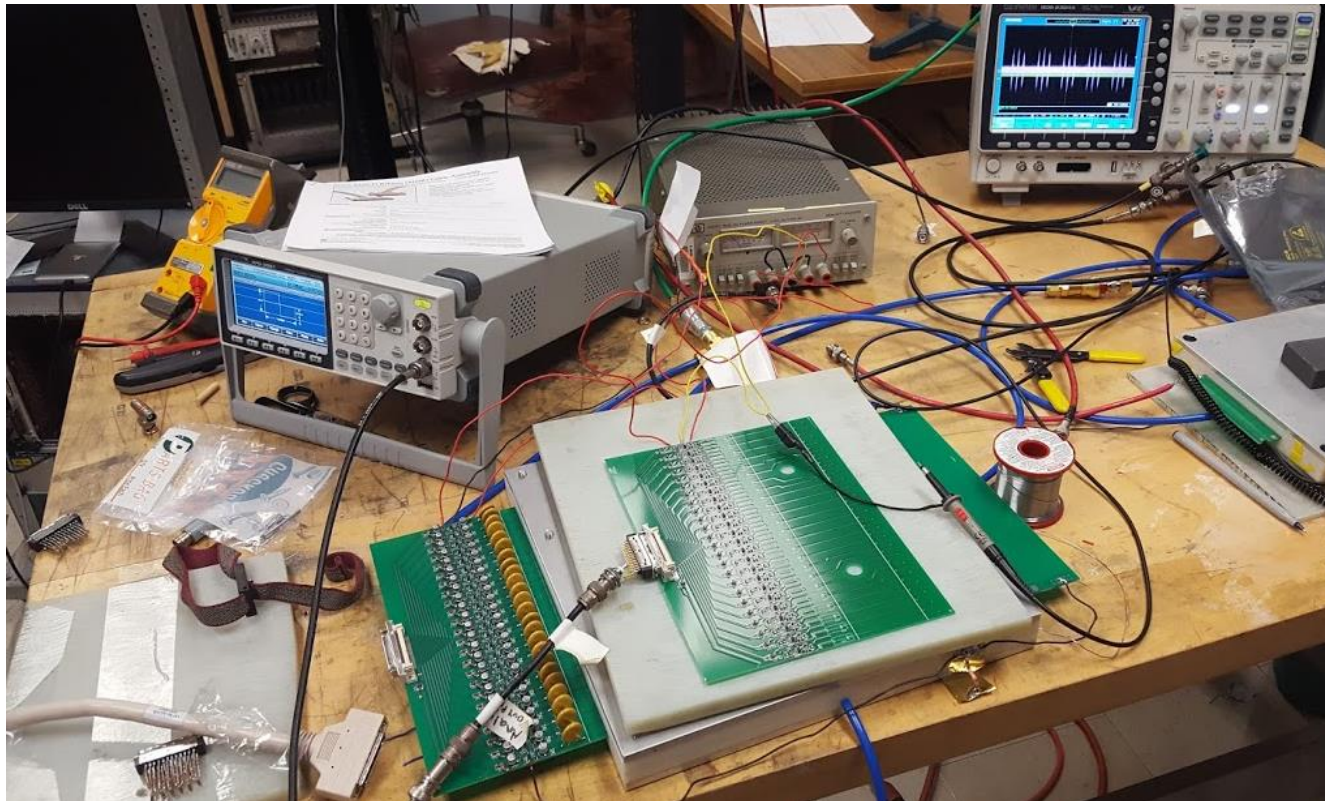
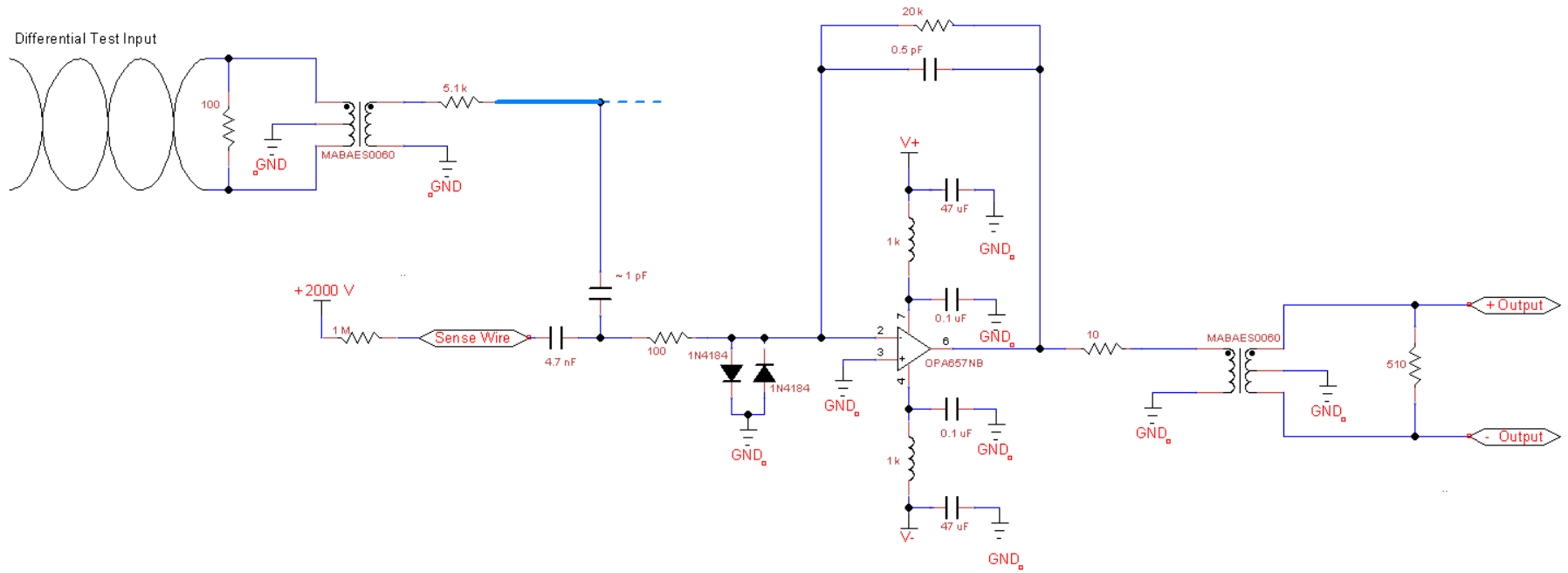


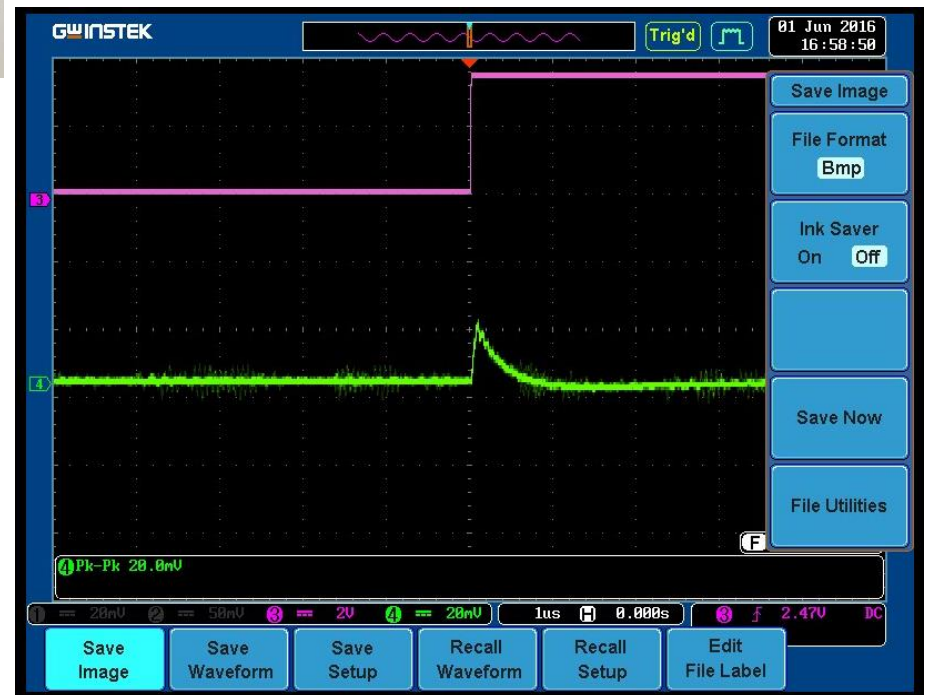
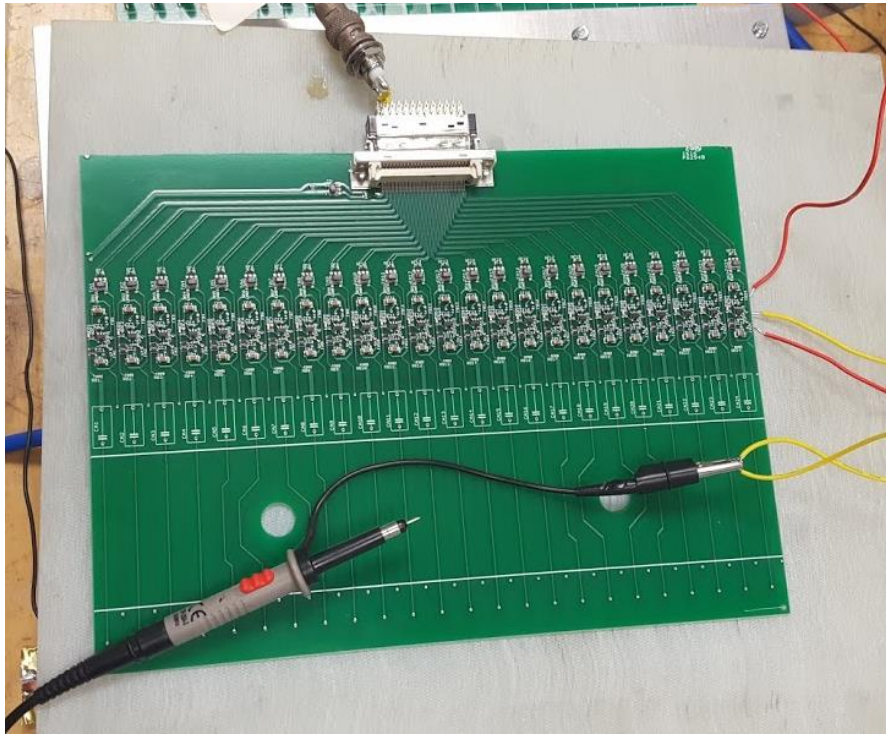
# Large MWPC Electronics Testing

- Received all boards from manufacturer
- Tested boards for functionality
- Removed excess material below connector
- Sanded down to proper size



Differential Test Input

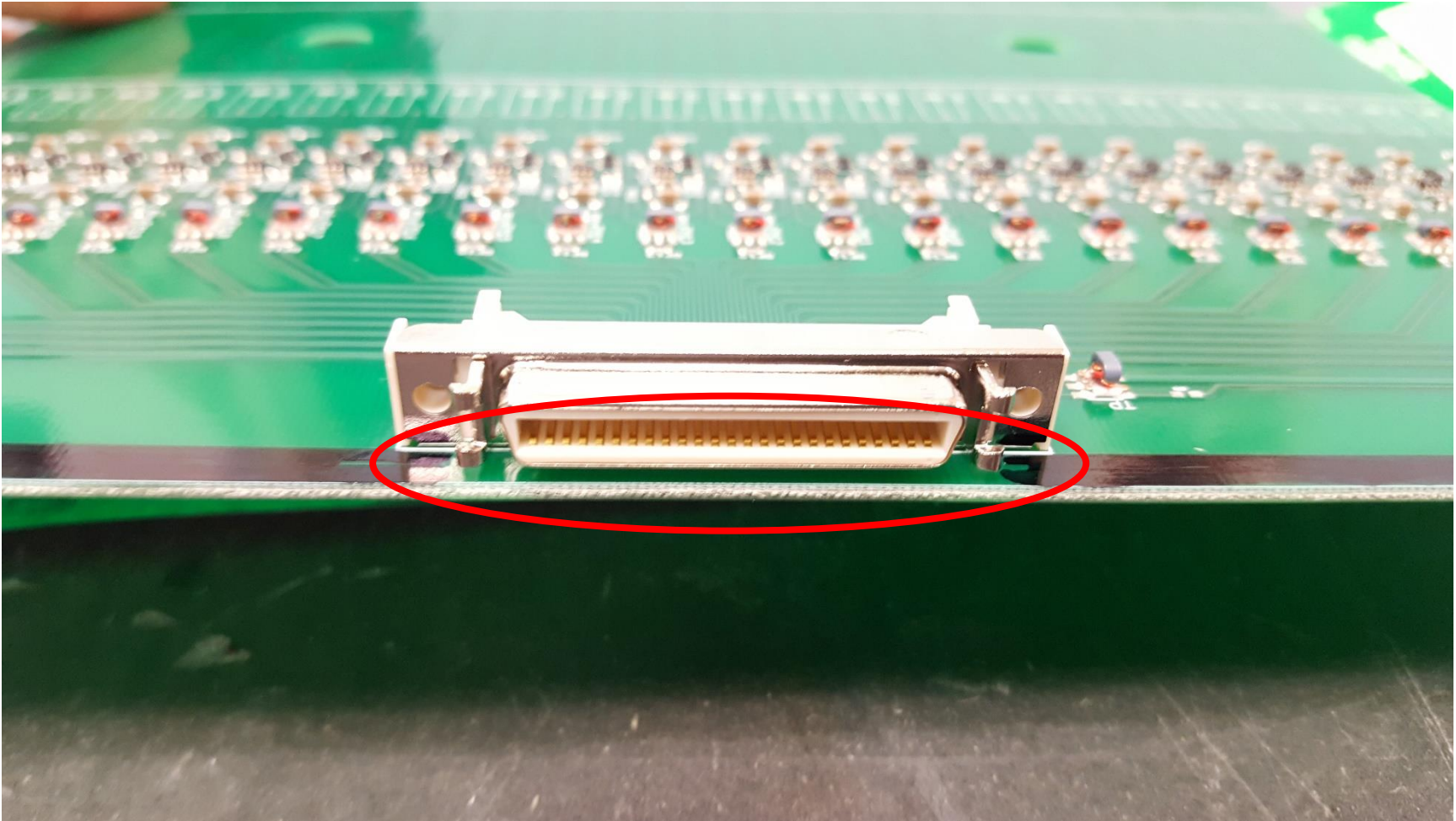




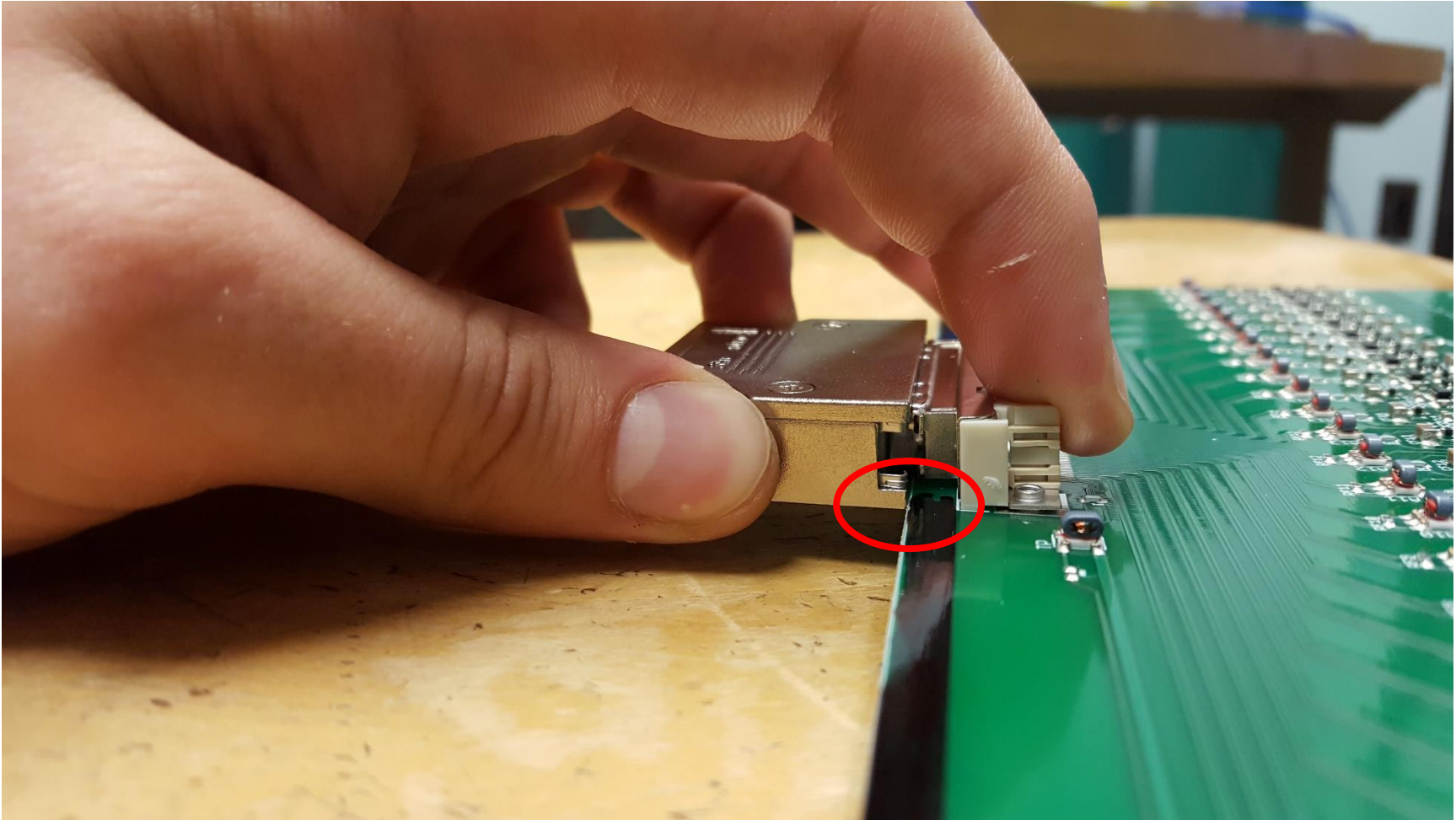
# Removing excess material from boards



## Close-up View of MDR Connector



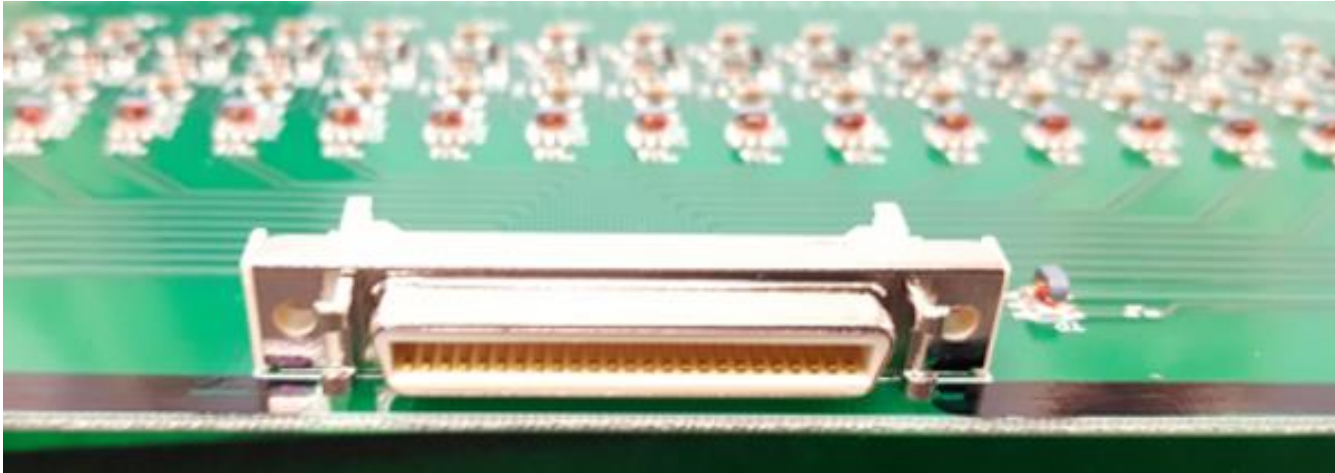
Issue: Cable does not connect due to presence of rail



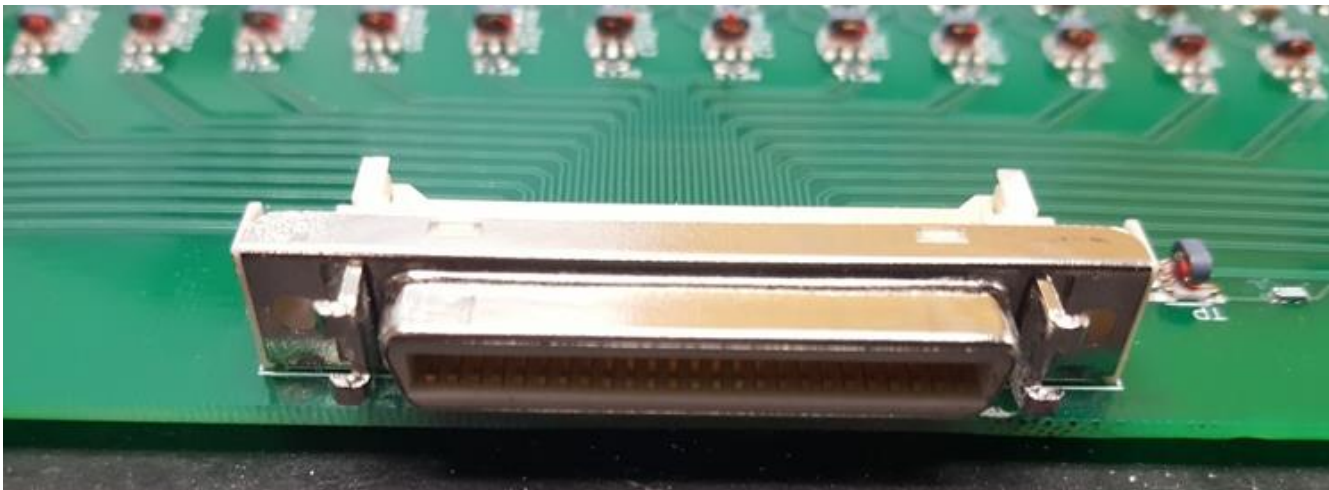
The issue that the breakaway rails being present on the board causes is that the connector cannot attach to the board as the lower portion of the cable hits the board material before a connection is made

Solution: Remove material with Dremel cutting tool

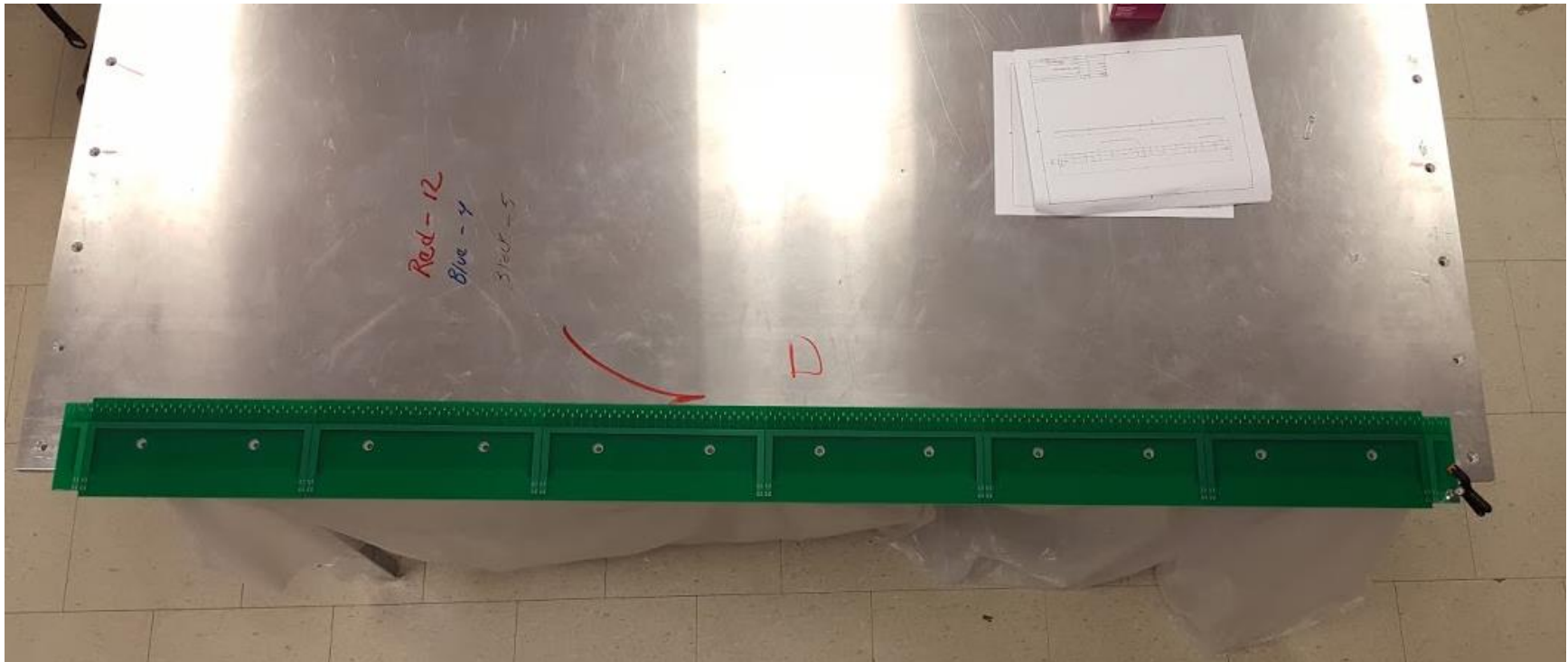
Before



After



# Sanding down board edges





<b>Sense Boards</b>		
<b>Board Number</b>	<b>Length (inches)</b>	
	<b>Original</b>	<b>Sanded</b>
1	9.6060	9.6005
2	9.6045	9.6010
3	9.6080	9.6000
4	9.6075	9.6000
5	9.6035	9.5995
6	9.6030	9.6005

<b>Bias Boards</b>		
<b>Board Number</b>	<b>Length (inches)</b>	
	<b>Original</b>	<b>Sanded</b>
1	9.6070	9.6005
2	9.6060	9.6000
3	9.6045	9.6005
4	9.6050	9.6000
5	9.6060	9.6005
6	9.6065	9.6000

