

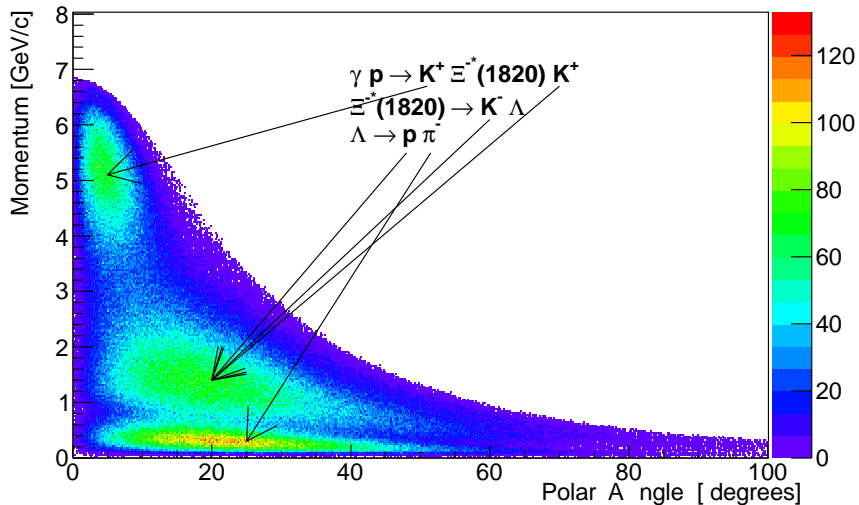
Cascade Simulations Update

Nathan Sparks

Florida State University, Tallahassee, Florida

GlueX Physics Meeting
08/13/2012

Generated Momentum versus θ Distributions



Characteristics

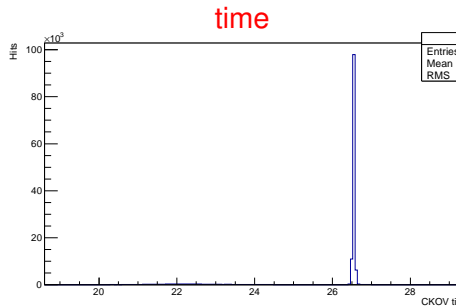
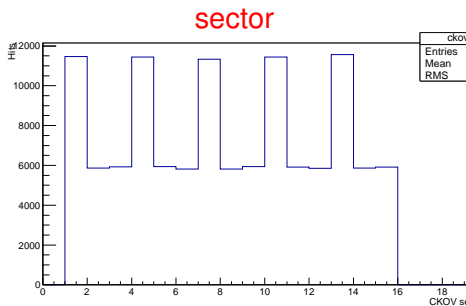
Gas Threshold Counter (RPI design)

- starts at downstream edge of solenoid
- C_4F_{10} gas ($n=1.00153$), ≈ 2 m in length
- $p_{th} \approx 2.5$ GeV/c for pions, 8.9 GeV/c for kaons
- 15 sectors in ϕ , each with PMT ($z \approx 590$ cm, $R \approx 100$ cm)
- Cherenkov light focussed onto PMTs by mirror system
- 1.5-5.0 eV radiation window
- Optics optimized by Eugene Chudakov and implemented in HDGeant by Richard Jones

How much does a Cherenkov detector improve PID of fast forward-going kaons?

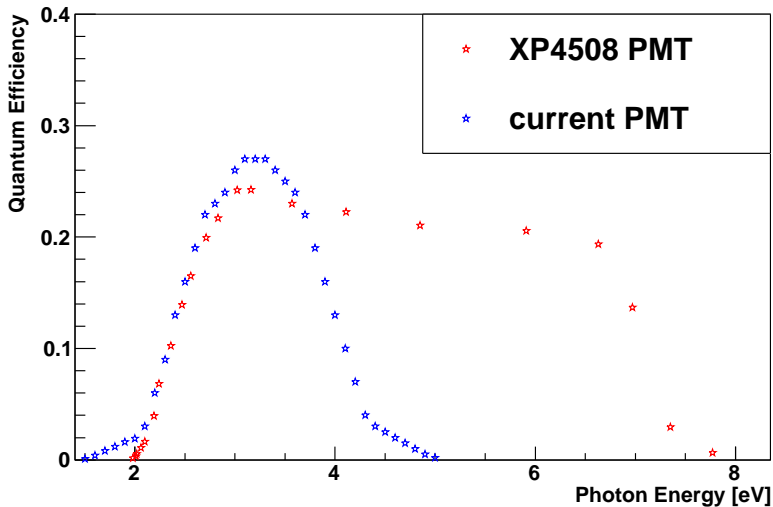
Single Particle Test

- Threw 200k π^+ tracks with $2 \text{ GeV}/c < p < 7 \text{ GeV}/c$, $0^\circ < \theta < 14^\circ$
- Looked at acceptance, detection efficiency, and photoelectron distributions

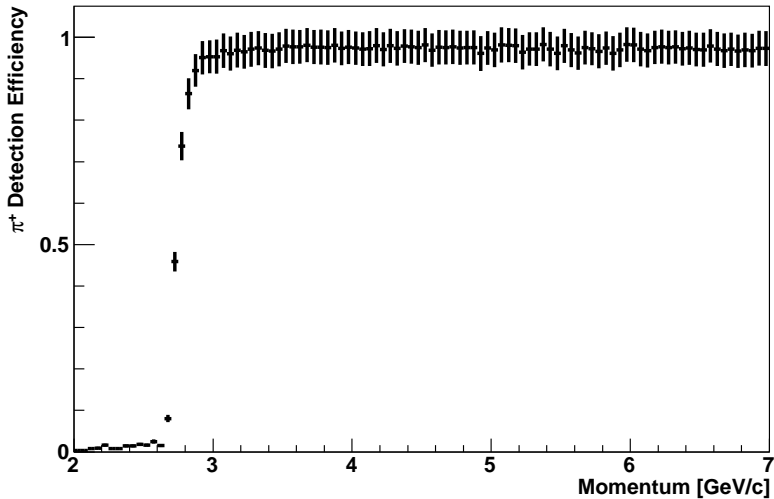


Characteristics

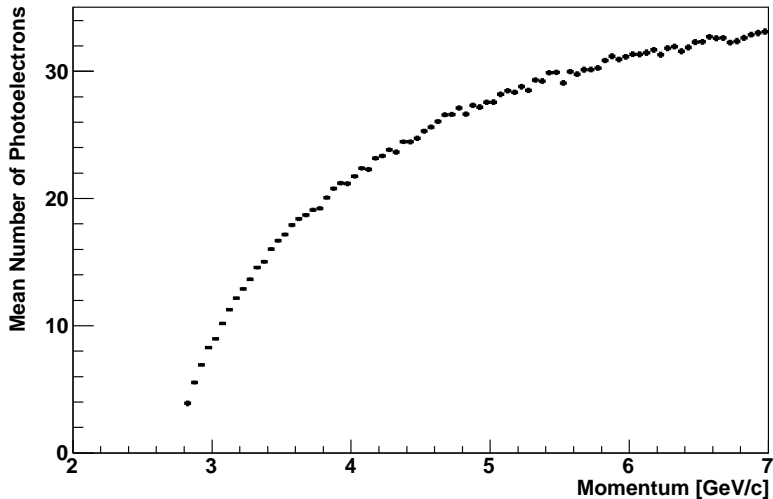
CKOV PMT QE curves



CKOV Detection Efficiency



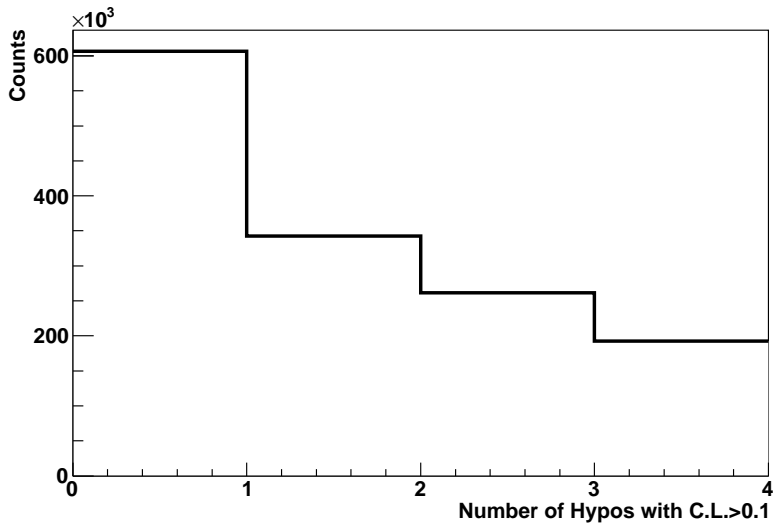
CKOV Photoelectrons versus Momentum



Efficiency study

- Threw 1M K^+ tracks with $2 \text{ GeV}/c < p < 8 \text{ GeV}/c$,
 $0^\circ < \theta < 20^\circ$
- Threw 1M K^+ tracks with $0 \text{ GeV}/c < p < 2 \text{ GeV}/c$,
 $0^\circ < \theta < 60^\circ$
- Looked at number of hypotheses with pid χ^2 probability larger than 10 %

Counts



Distribution

