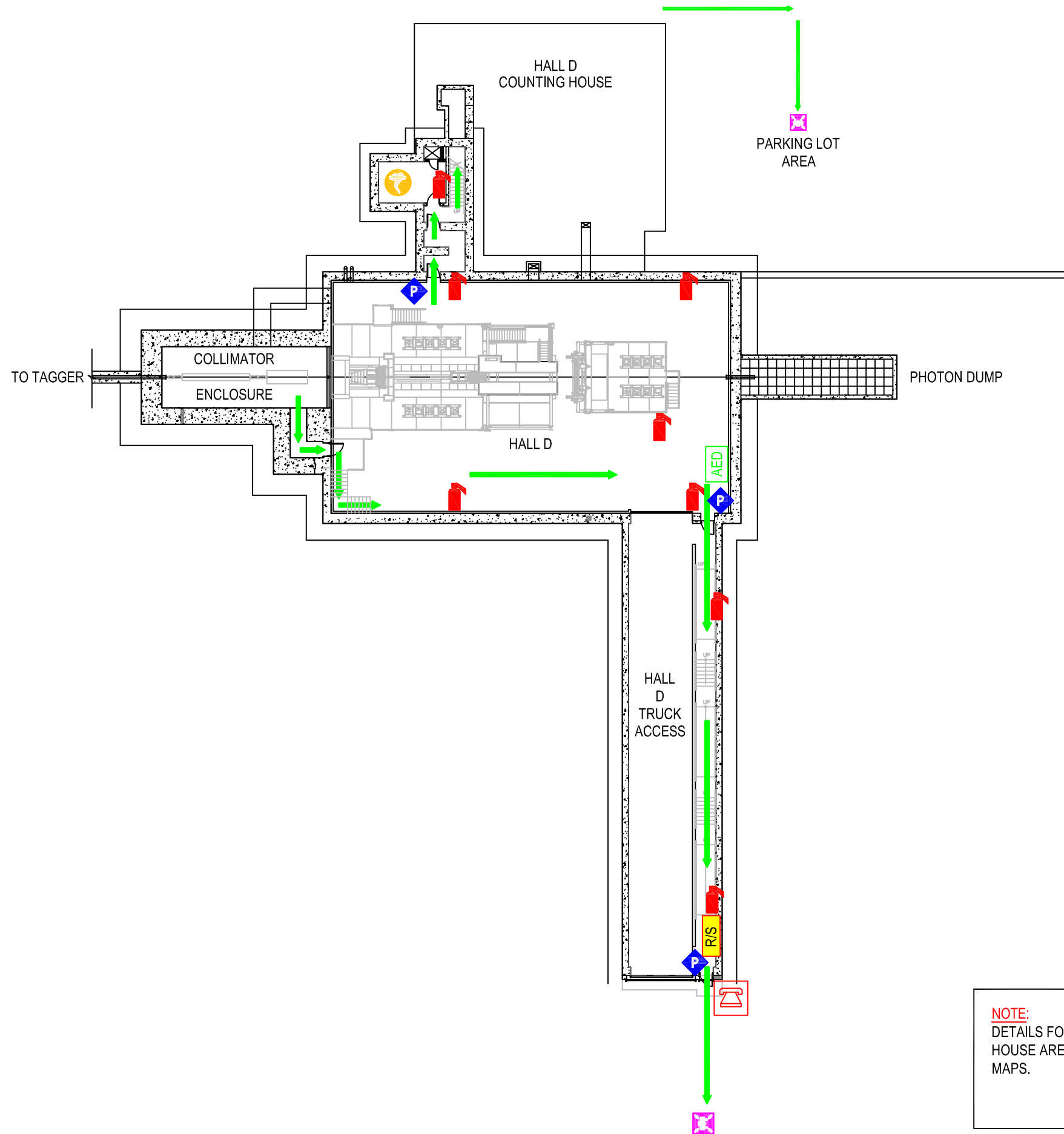


FOR HALL WORKER AWARENESS TRAINING ONLY



HALL D BUILDING 203 EMERGENCY PLAN

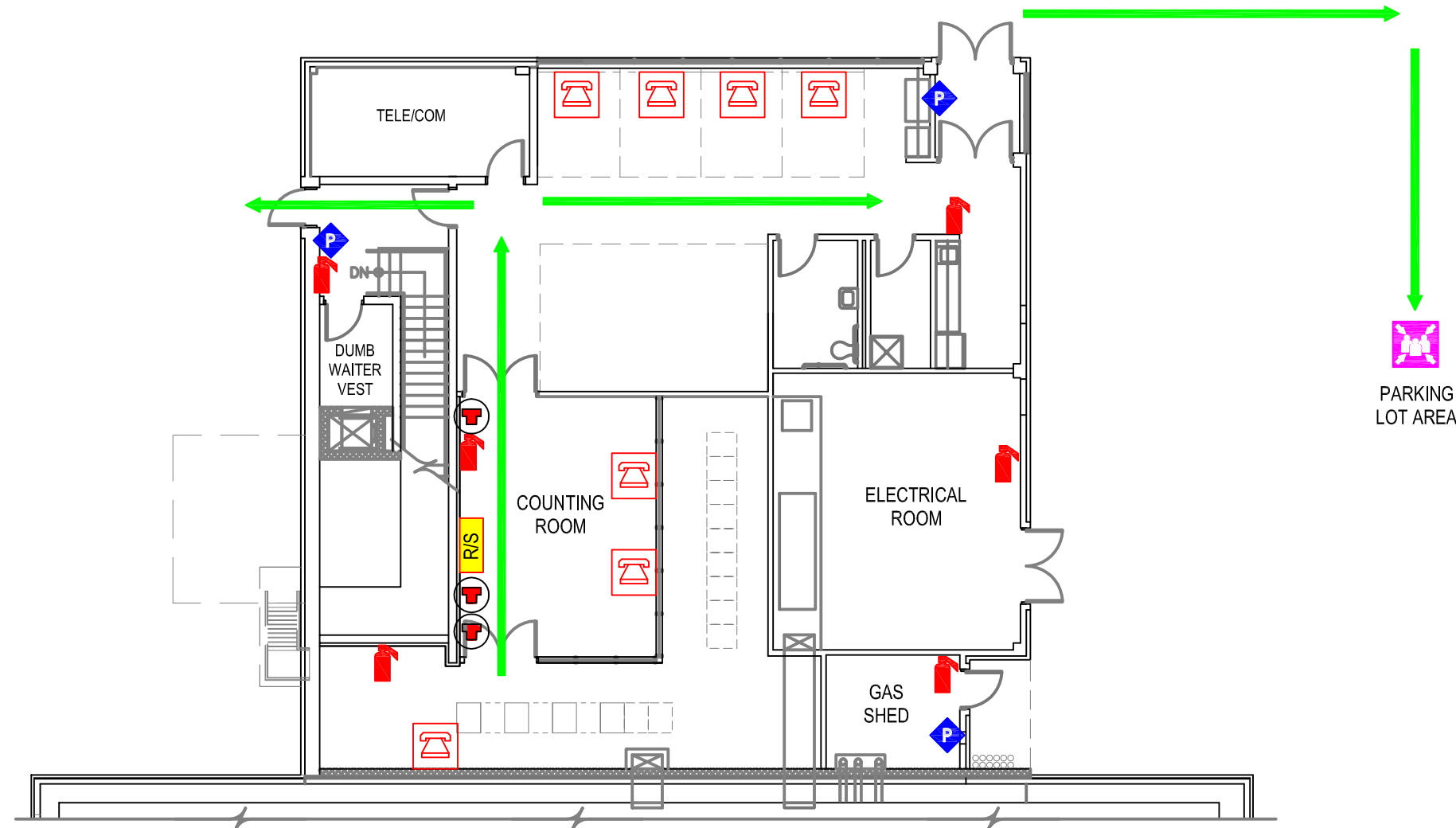
- IN CASE OF FIRE:**
- STAY CALM
 - WALK, DO NOT RUN
 - ACTIVATE NEAREST PULL BOX, FOLLOW ARROWS IN DIAGRAM, & MEET AT MUSTER POINT

- IN CASE OF SEVERE WIND:**
IF A TORNADO WARNING IS ISSUED BY THE NATIONAL WEATHER SERVICE, AND JLAB IS WITHIN THE WARNING AREA, MOVE QUICKLY TO THE DESIGNATED SEVERE WIND "TAKE COVER" AREA.

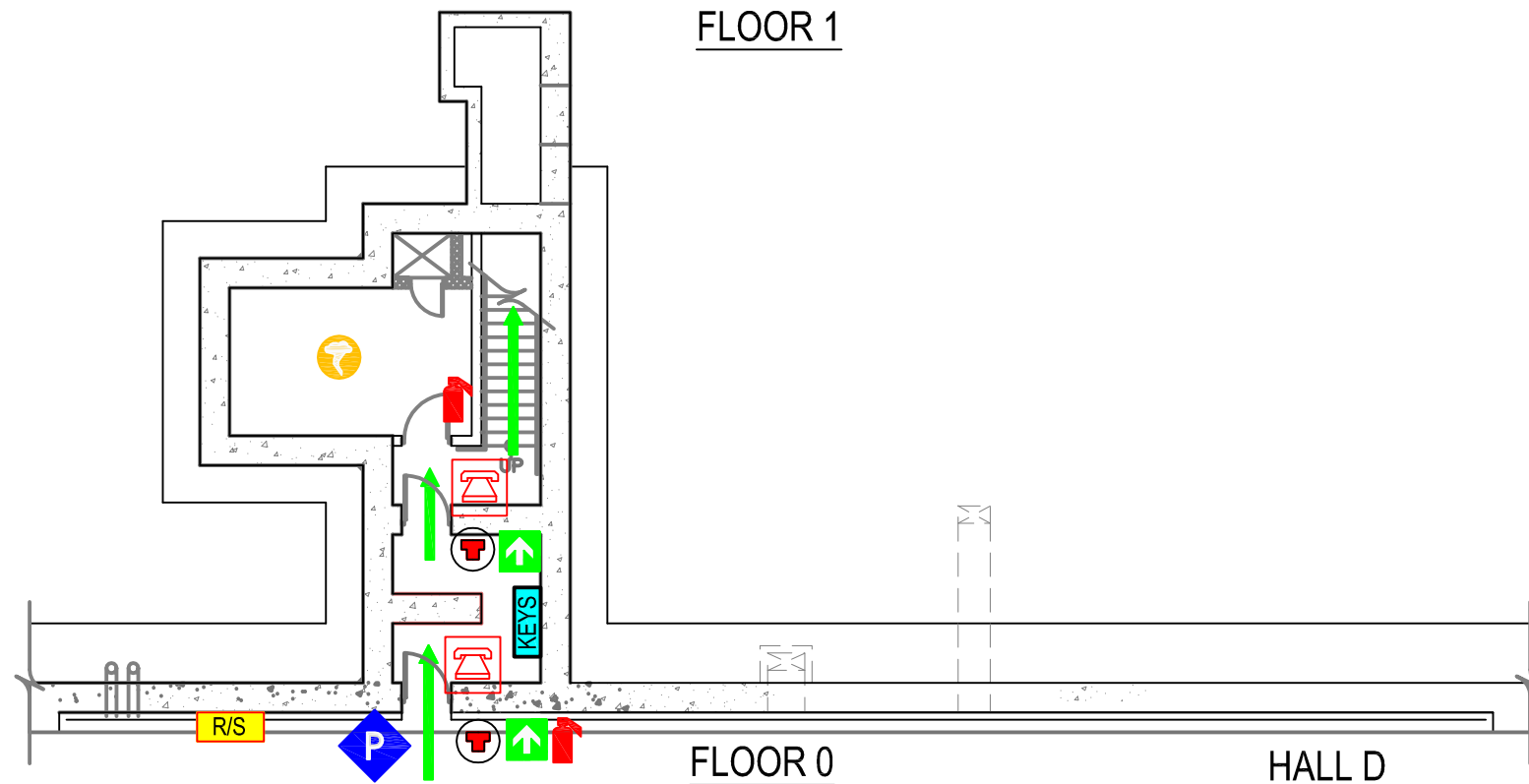
- LEGEND**
- EGRESS PATH
 - FIRE EXTINGUISHER
 - FIRE ALARM PULL STATION
 - SEVERE WIND "TAKE COVER" AREA
 - MUSTER POINT
 - EMERGENCY STOP
 - RUN/SAFE BOX
 - TELEPHONE
 - AUTOMATED EXTERNAL DEFIBRILLATOR
 - FIRST AID

NOTE:
DETAILS FOR HALL D AND COUNTING HOUSE ARE SHOWN ON SEPARATE MAPS.

FOR HALL WORKER AWARENESS TRAINING ONLY



FLOOR 1



FLOOR 0

HALL D

**COUNTING HOUSE
BUILDING 202, FLOOR 0 & 1
EMERGENCY PLAN**

IN CASE OF FIRE:

- STAY CALM
- WALK, DO NOT RUN
- ACTIVATE NEAREST PULL BOX, FOLLOW ARROWS IN DIAGRAM, & MEET AT MUSTER POINT

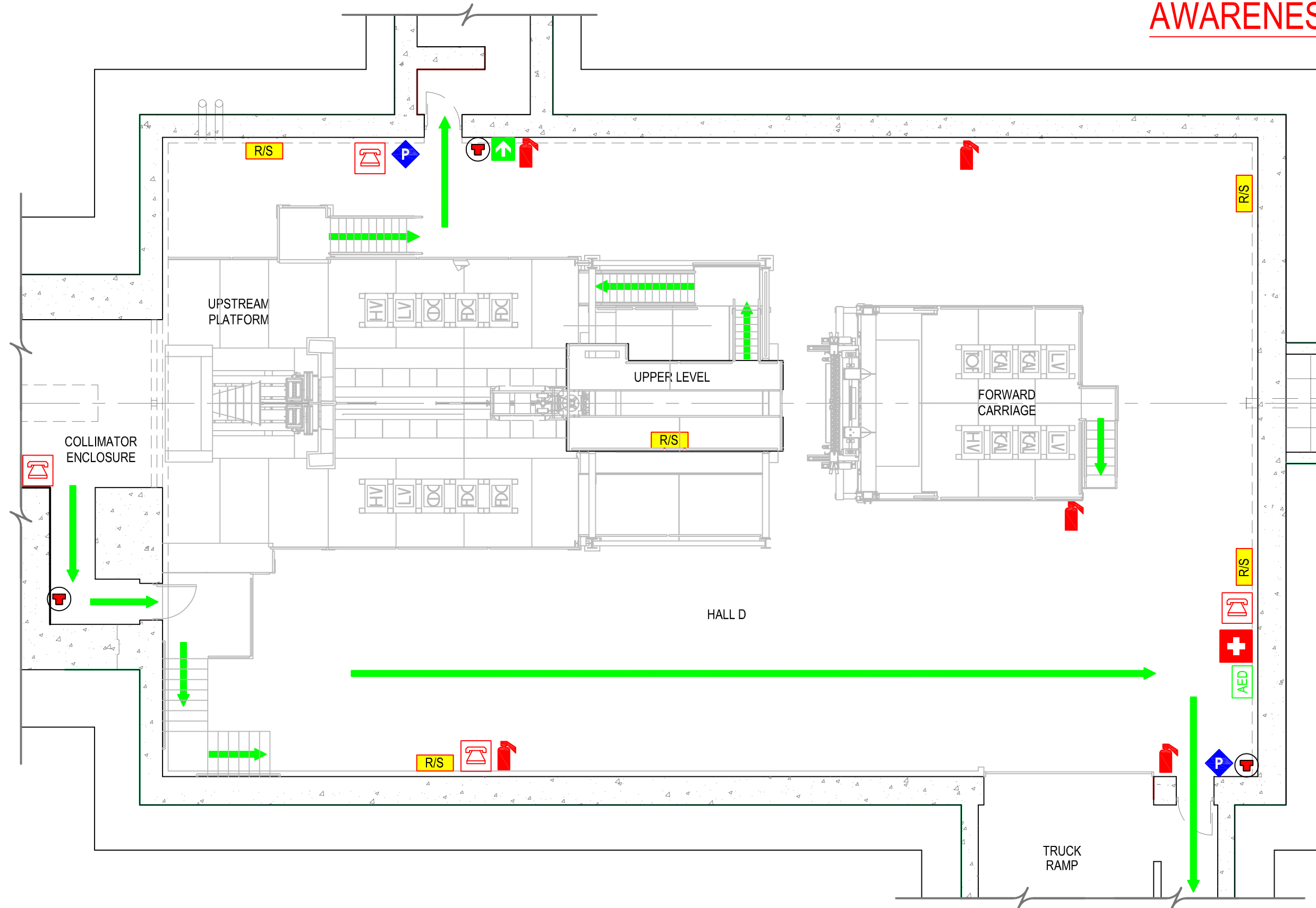
IN CASE OF SEVERE WIND:

IF A TORNADO WARNING IS ISSUED BY THE NATIONAL WEATHER SERVICE, AND JLAB IS WITHIN THE WARNING AREA, MOVE QUICKLY TO ONE OF THE DESIGNATED SEVERE WIND "TAKE COVER" AREAS.

LEGEND

- EGRESS PATH
- FIRE EXTINGUISHER
- FIRE ALARM PULL STATION
- SEVERE WIND "TAKE COVER" AREA
- MUSTER POINT
- EMERGENCY EXIT
- EMERGENCY STOP
- KEY ACCESS BANK
- RUN/SAFE BOX
- TELEPHONE
- AUTOMATED EXTERNAL DEFIBRILLATOR
- FIRST AID

FOR HALL WORKER AWARENESS TRAINING ONLY



HALL D BUILDING 203 EMERGENCY PLAN

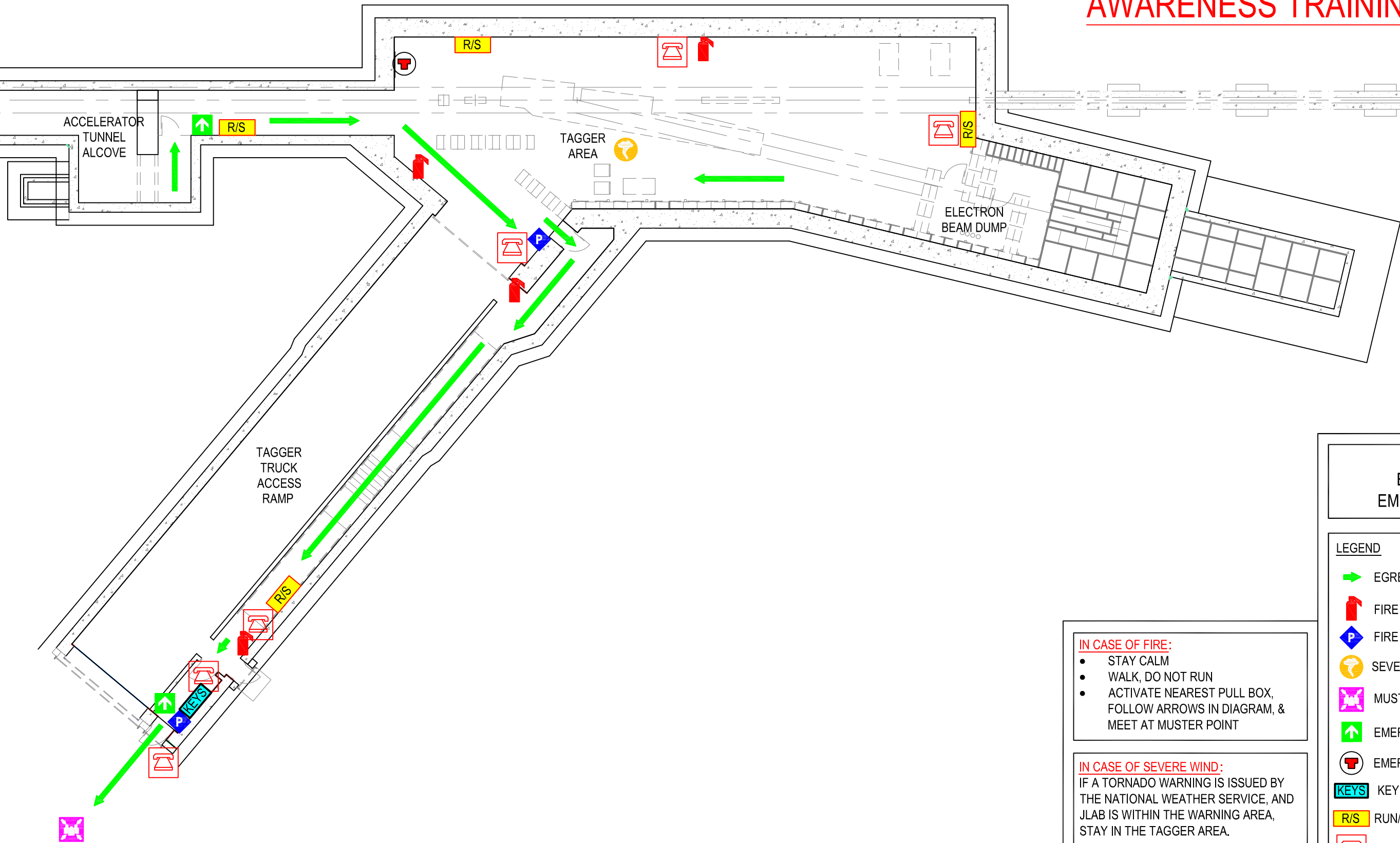
- IN CASE OF FIRE:**
- STAY CALM
 - WALK, DO NOT RUN
 - ACTIVATE NEAREST PULL BOX, FOLLOW ARROWS IN DIAGRAM, & MEET AT MUSTER POINT

- IN CASE OF SEVERE WIND:**
- IF A TORNADO WARNING IS ISSUED BY THE NATIONAL WEATHER SERVICE, AND JLAB IS WITHIN THE WARNING AREA, MOVE QUICKLY TO ONE OF THE DESIGNATED SEVERE WIND "TAKE COVER" AREAS.

LEGEND

- EGRESS PATH
- FIRE EXTINGUISHER
- FIRE ALARM PULL STATION
- SEVERE WIND "TAKE COVER" AREA
- MUSTER POINT
- EMERGENCY EXIT
- EMERGENCY STOP
- KEY ACCESS BANK
- RUN/SAFE BOX
- TELEPHONE
- AUTOMATED EXTERNAL DEFIBRILLATOR
- FIRST AID

FOR HALL WORKER AWARENESS TRAINING ONLY



TAGGER BUILDING 204 EMERGENCY PLAN

- LEGEND**
- ➔ EGRESS PATH
 - FIRE EXTINGUISHER
 - FIRE ALARM PULL STATION
 - SEVERE WIND "TAKE COVER" AREA
 - MUSTER POINT
 - EMERGENCY EXIT
 - EMERGENCY STOP
 - KEY ACCESS BANK
 - RUN/SAFE BOX
 - TELEPHONE

IN CASE OF FIRE:

- STAY CALM
- WALK, DO NOT RUN
- ACTIVATE NEAREST PULL BOX, FOLLOW ARROWS IN DIAGRAM, & MEET AT MUSTER POINT

IN CASE OF SEVERE WIND:
IF A TORNADO WARNING IS ISSUED BY THE NATIONAL WEATHER SERVICE, AND JLAB IS WITHIN THE WARNING AREA, STAY IN THE TAGGER AREA.