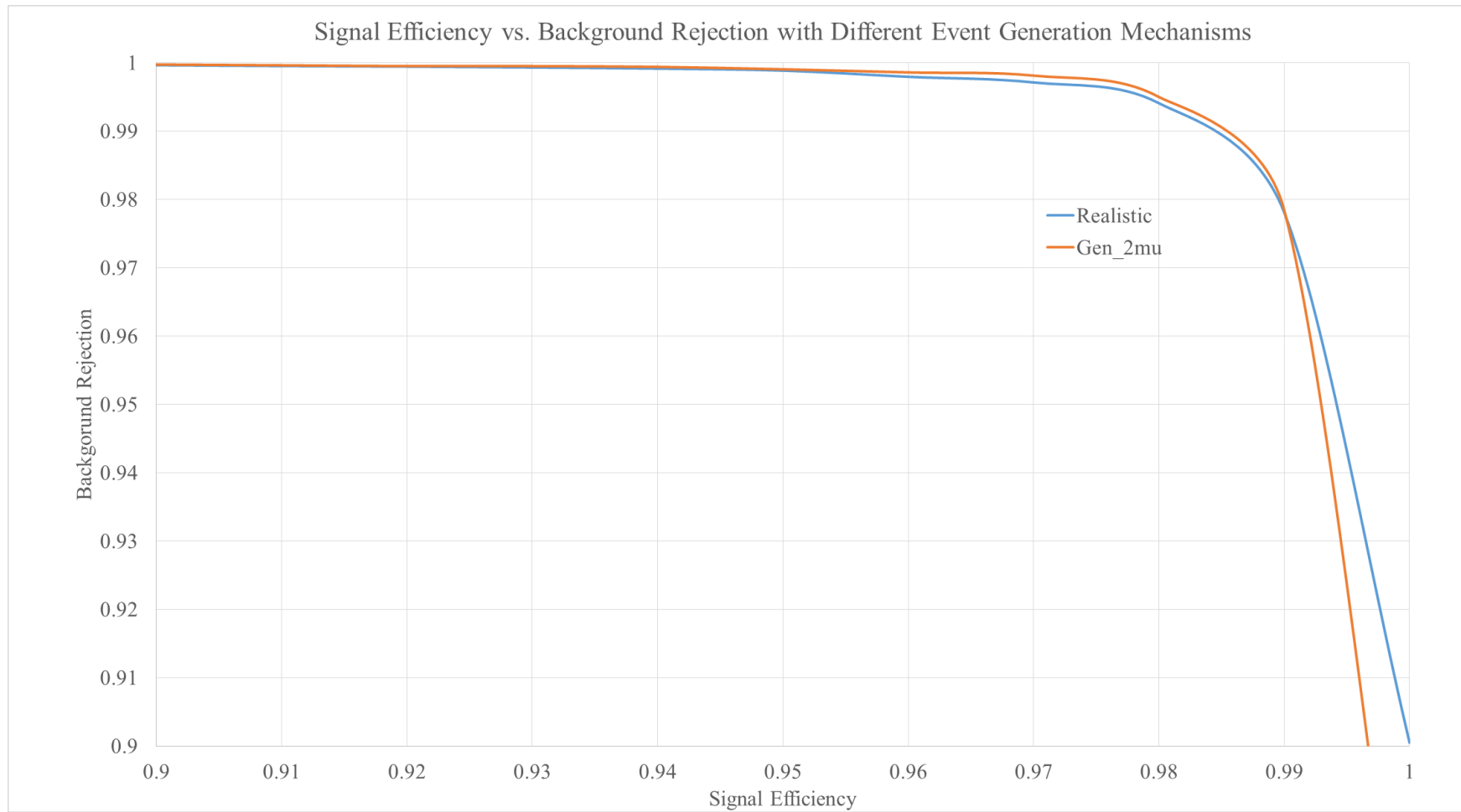


Specifications of simulation:

Realistic distributions: 100k pion and muon events each

Gen_2mu: 20k pion and muon events each, generated using Gen_2mu. Angular cuts at 0.8° and 4.61° , energy cuts at 5 and 6.3 GeV

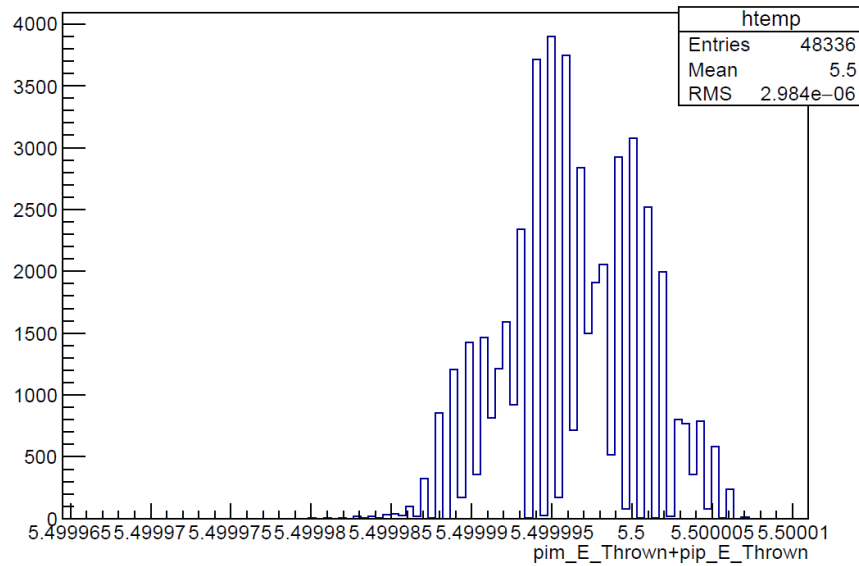
Detector Geometry: 12 individual MWPCs, with 10 cm of iron between every detector (110 cm iron total)



Plots of Realistic Events Thrown Parameters

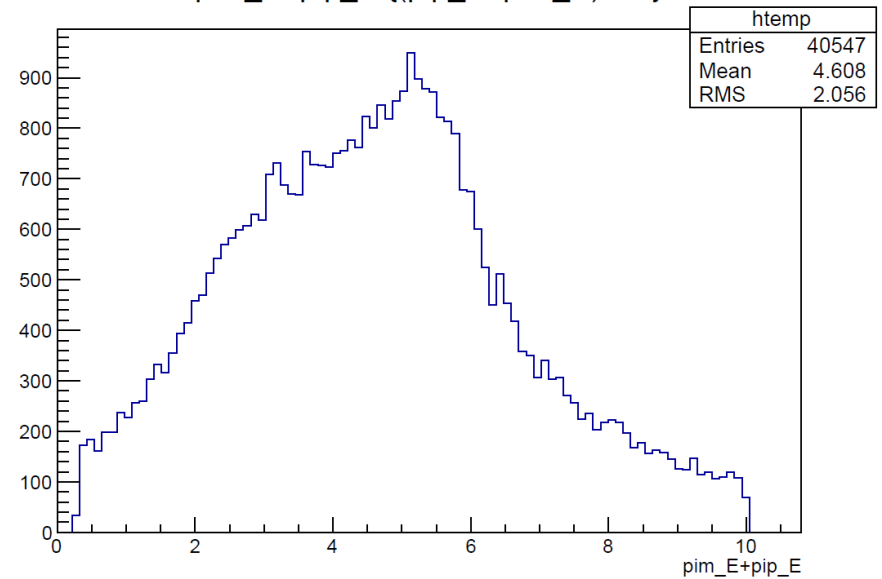
Thrown Energy Sum

pim_E_Thrown+pip_E_Thrown

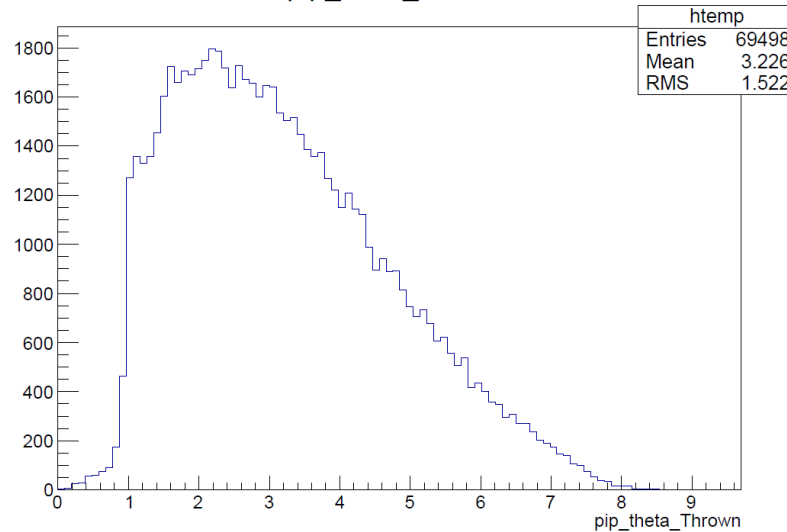


Reconstructed Energy Sum

pim_E+pip_E {(pip_E+pim_E)<10}



Thrown Angular Distribution



Thrown Angular
Distribution