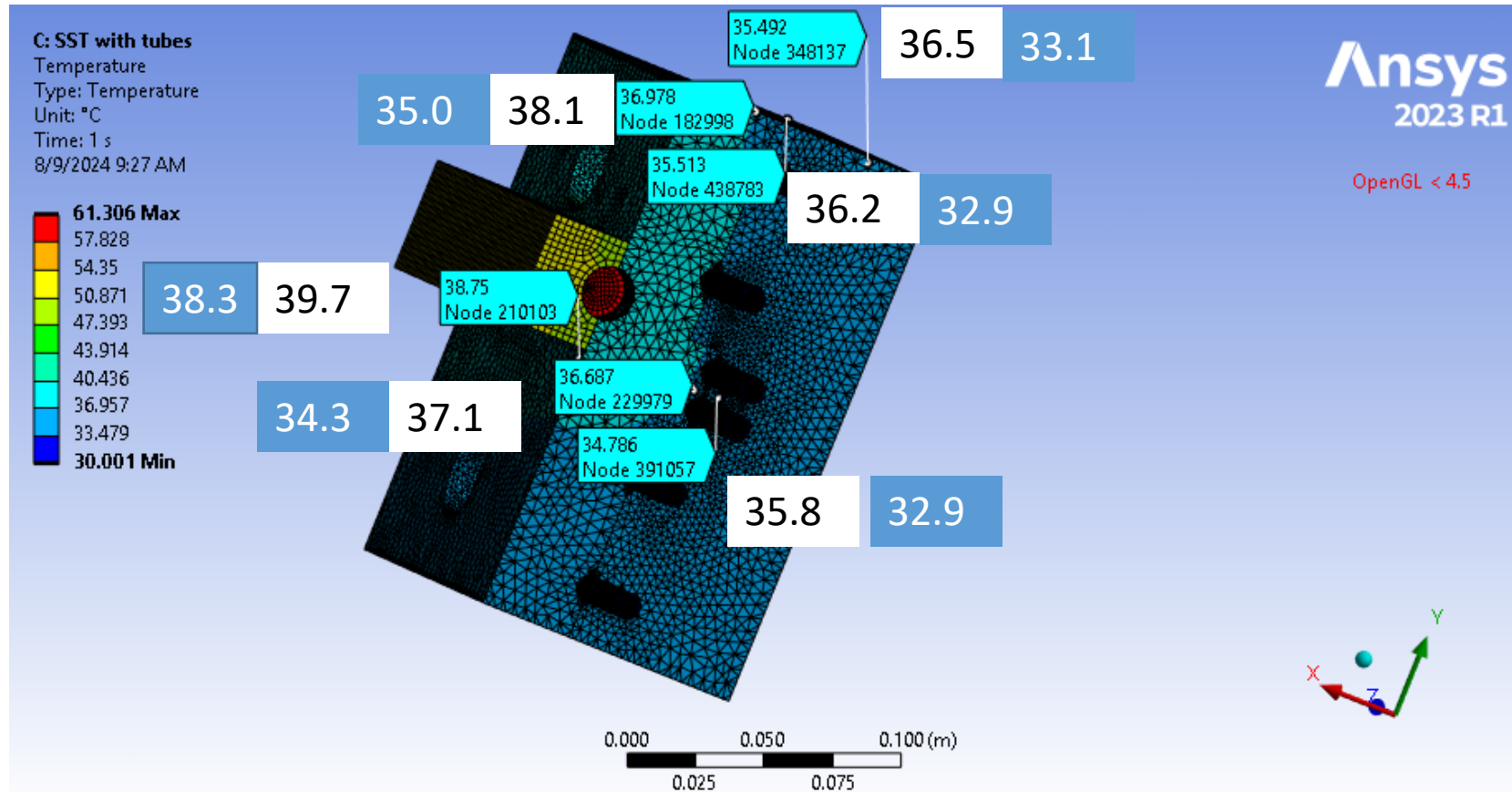


500 W tube heater

5um air gap at all contacts

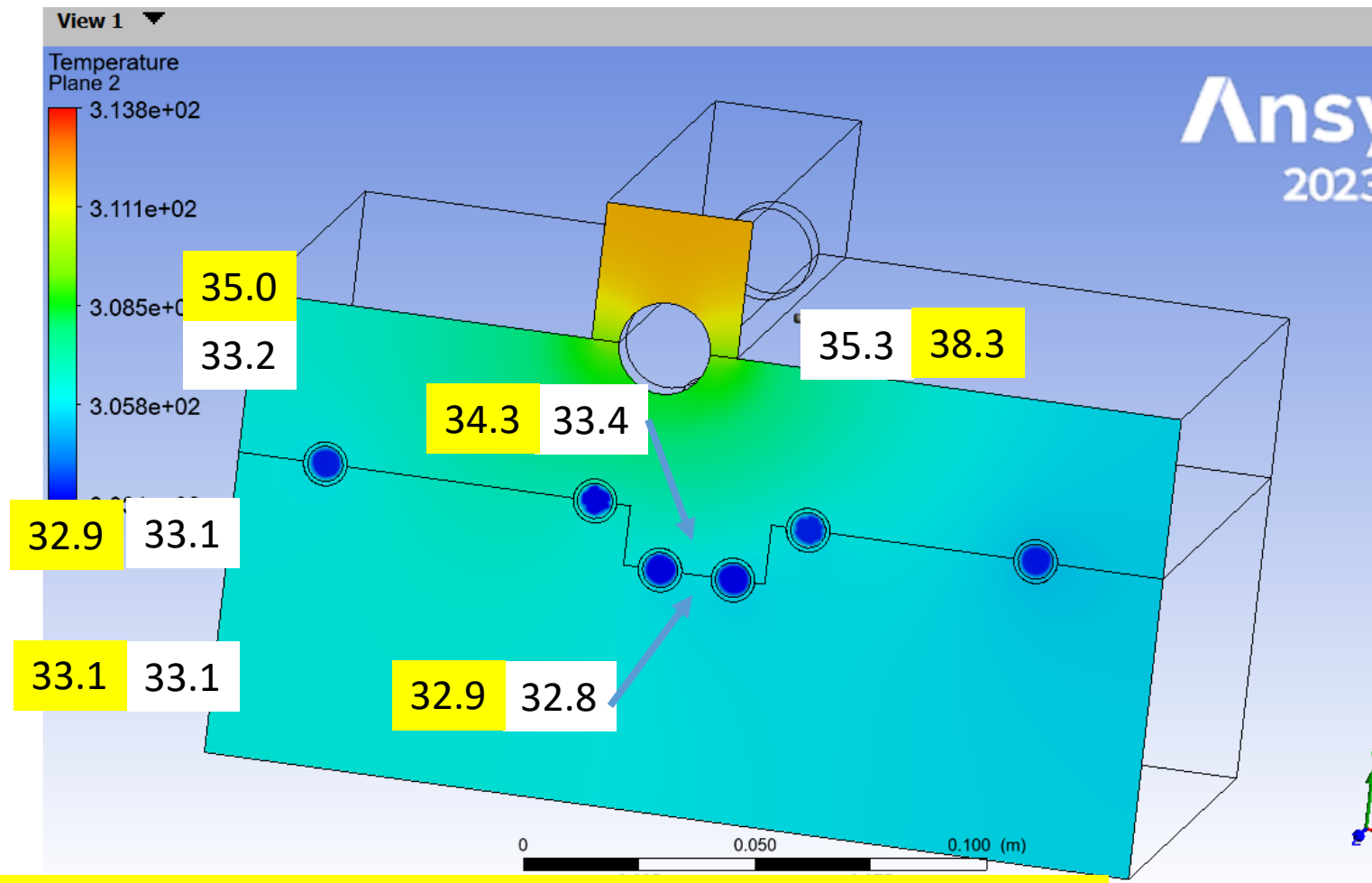
9000w/mc convection on inner tube surface



39.7 37.1 35.8 38.1 36.2 30.9 31.1 36.5 Test temps with no interface

38.3 34.3 32.9 35.0 32.9 31.1 31.5 33.1 Test temps with indium

CFX, 0.1g/s, 30C water in, perfect conduction, H2O delta T is 0.4C



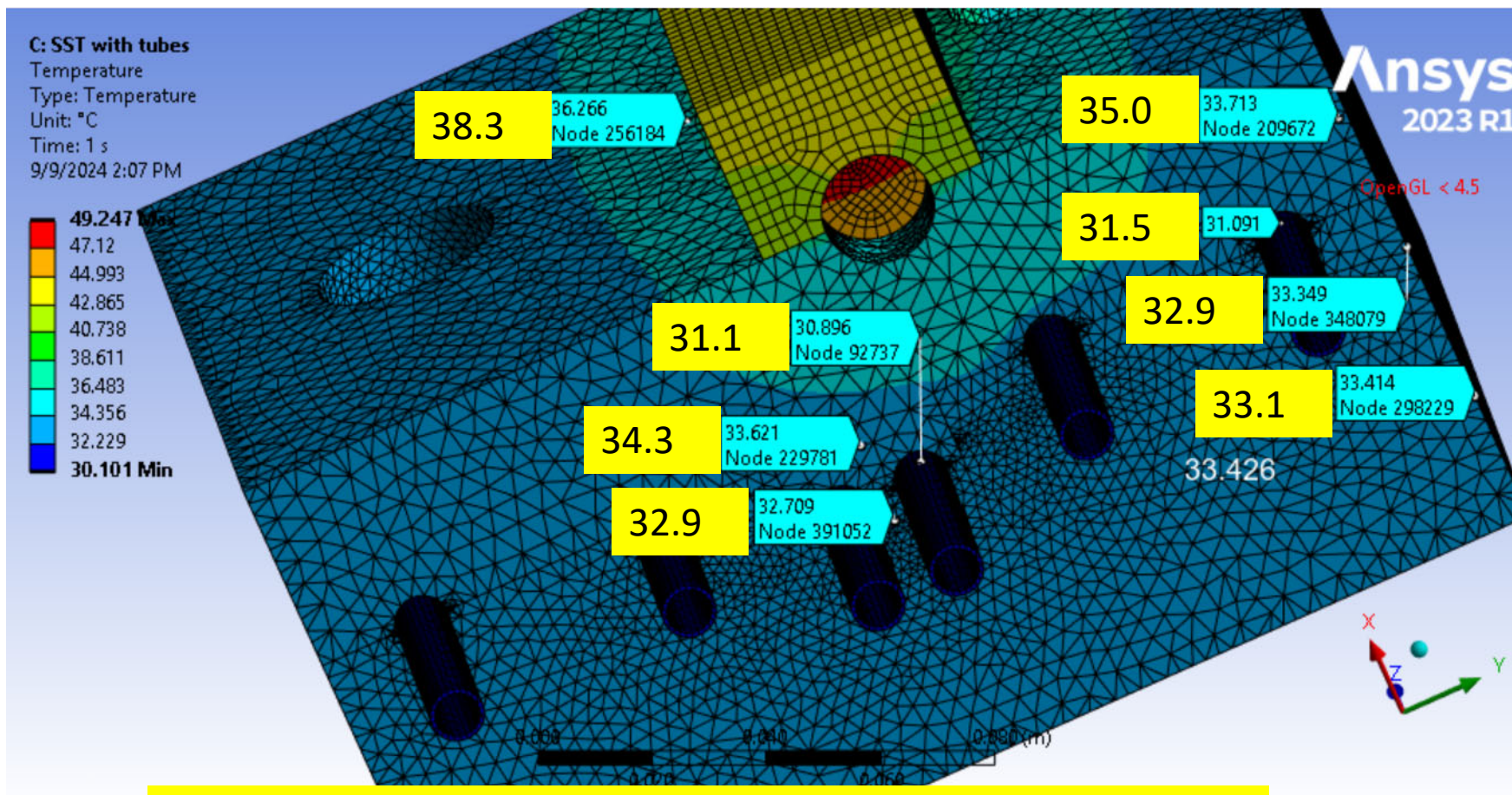
38.3 34.3 32.9 35.0 32.9 31.1 31.5 33.1 Test temps with indium

500 W tube heater

Indium (80000 W/C-m^2) tube contacts

60000 W/C-m^2 at copper blocks

8000 w/mc convection on inner tube surface



38.3 34.3 32.9 35.0 32.9 31.1 31.5 33.1 Test results with indium