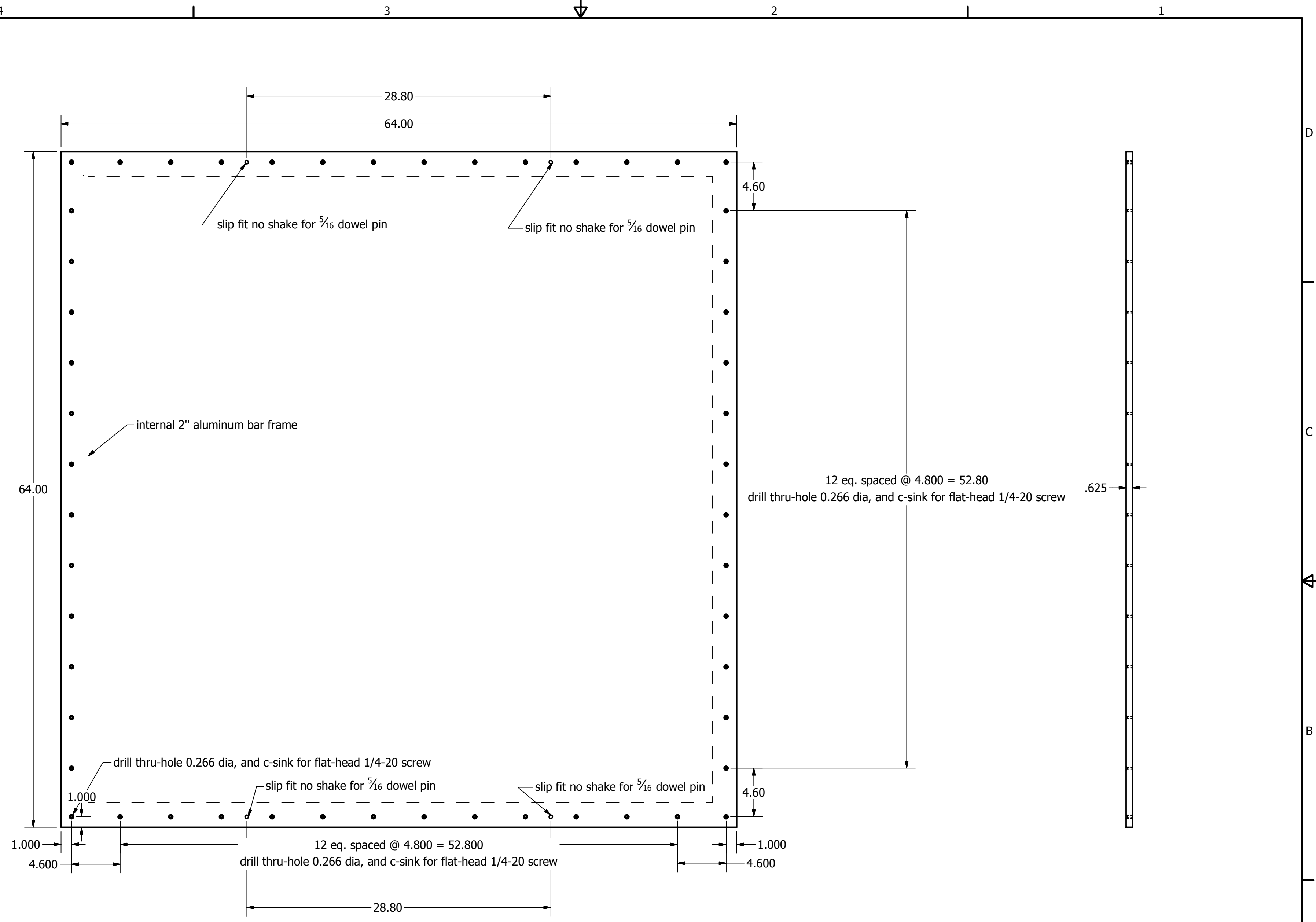


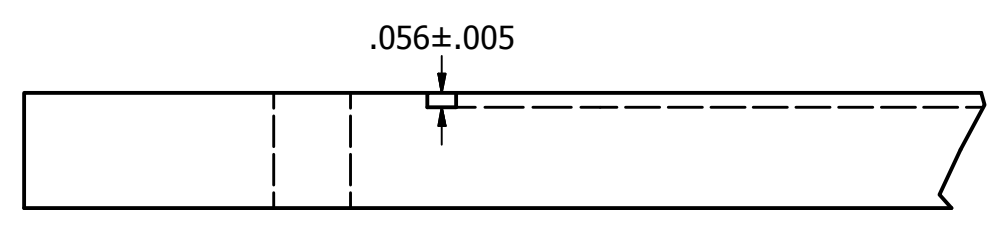
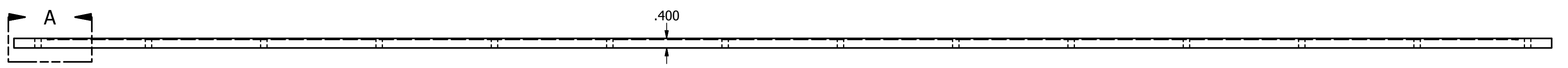
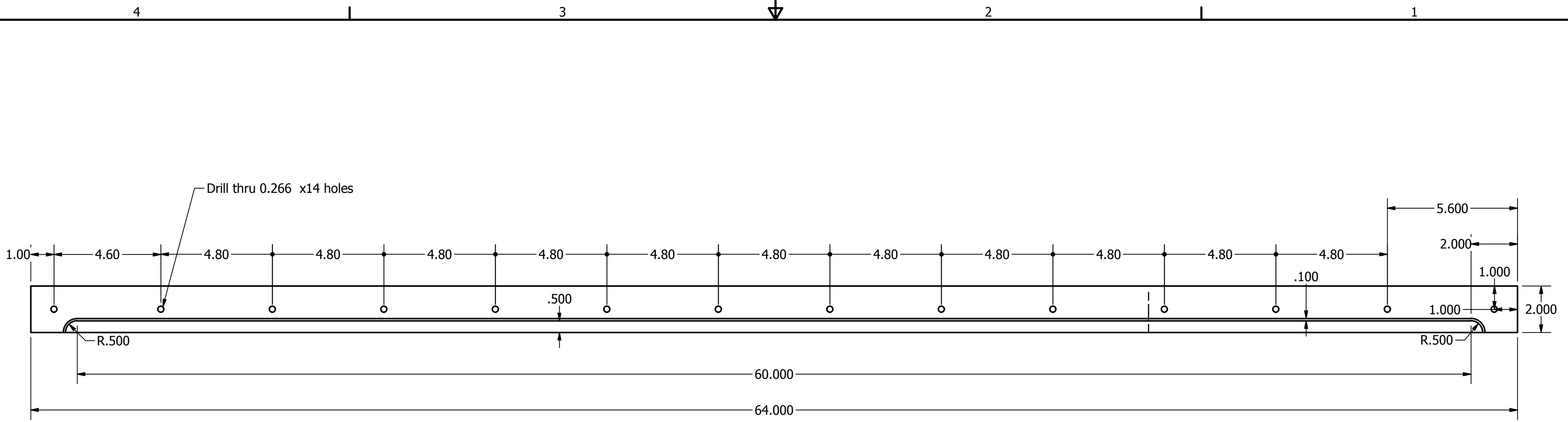
0.063" finish aluminum facings
 1/4" cell size aluminum honeycomb core
 internal 2" aluminum bar frame
 epoxy adhesive
 ± 0.003 tolerance

DRAWN menp	9/26/2014	TITLE Bottom Honeycomb Plate		
CHECKED				
QA				
MFG				
APPROVED		SIZE C	DWG NO	REV
			Honeycomb plate (no c'sink)	
		SCALE	SHEET 1 OF 1	

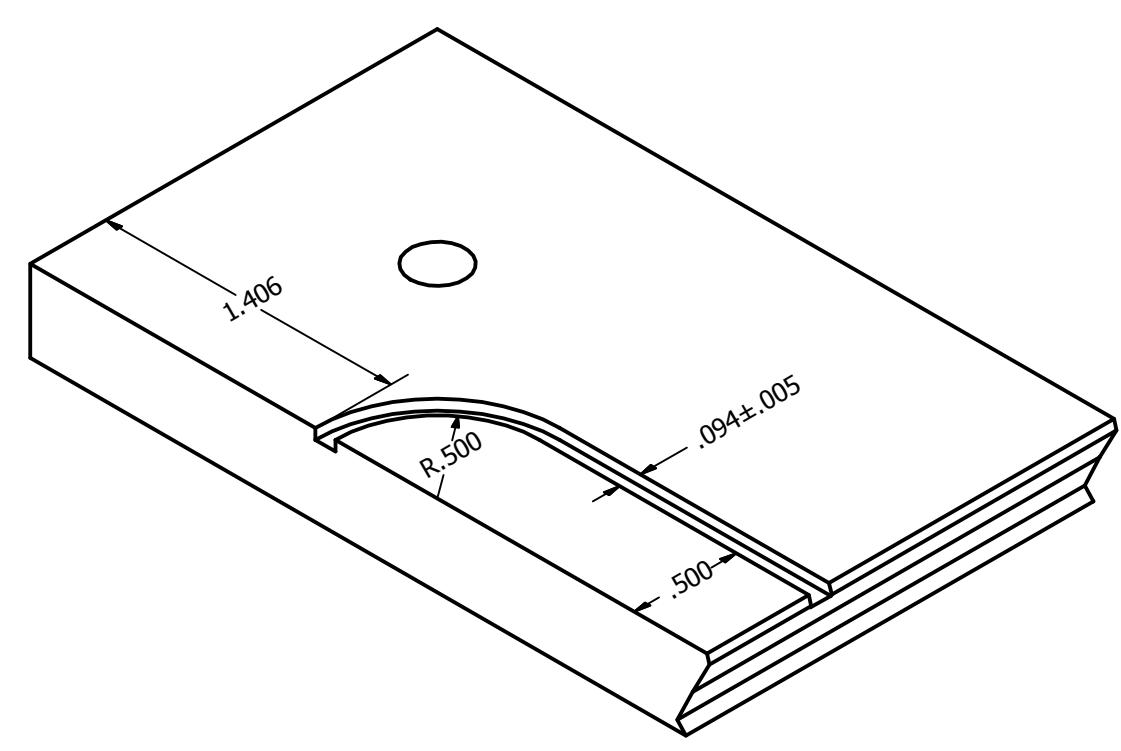


0.063" finish aluminum facings
 1/4" cell size aluminum honeycomb core
 internal 2" aluminum bar frame
 epoxy adhesive
 ±0.003 tolerance

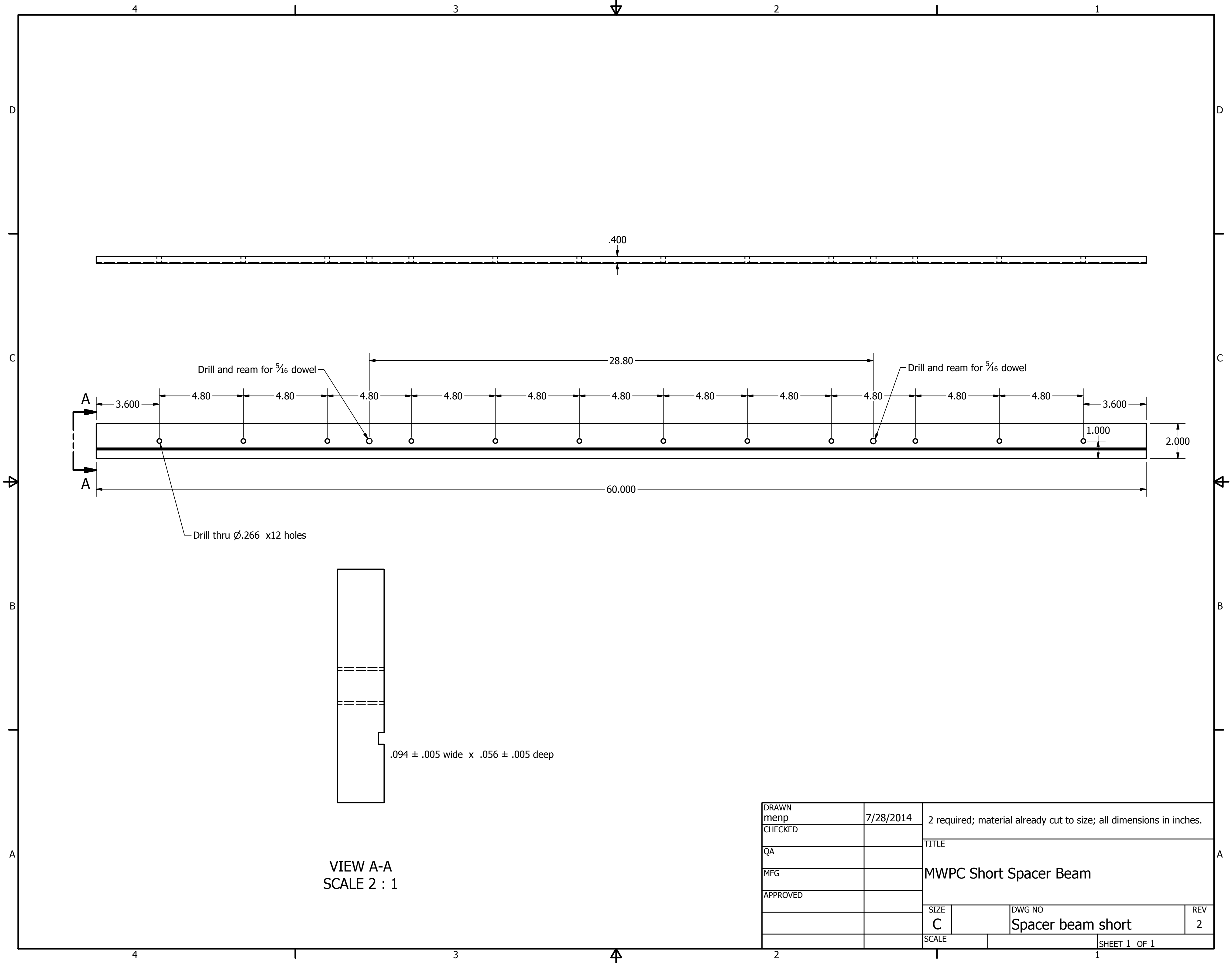
DRAWN menp	1/15/2016	TITLE <h3 style="text-align: center;">Top Honeycomb Plate</h3>		
CHECKED				
QA				
MFG				
APPROVED		SIZE C	DWG NO Honeycomb plate (c'bore)	REV
		SCALE	SHEET 1 OF 1	



DETAIL A
SCALE 1.5 : 1



DRAWN menp	7/28/2014	2 required; material already cut to size; all dimensions in inches.		
CHECKED		TITLE		
QA		MWPC Long Spacer Beam		
MFG		SIZE	DWG NO	REV
APPROVED		C	Spacer beam long	2
		SCALE	SHEET 1 OF 1	



Drill and ream for 5/16 dowel

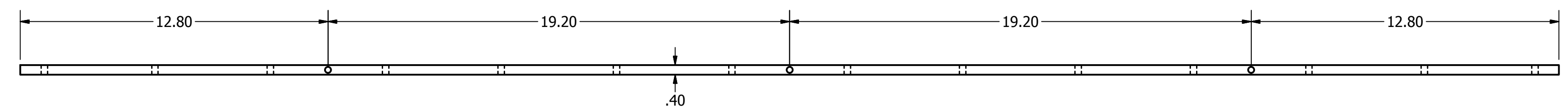
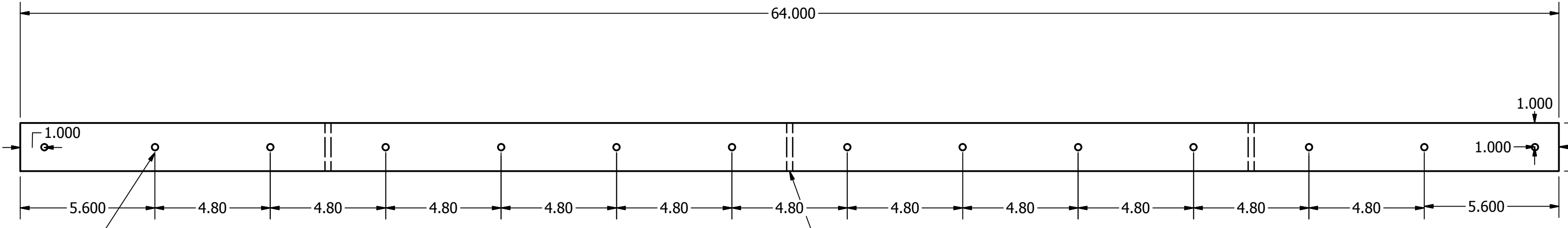
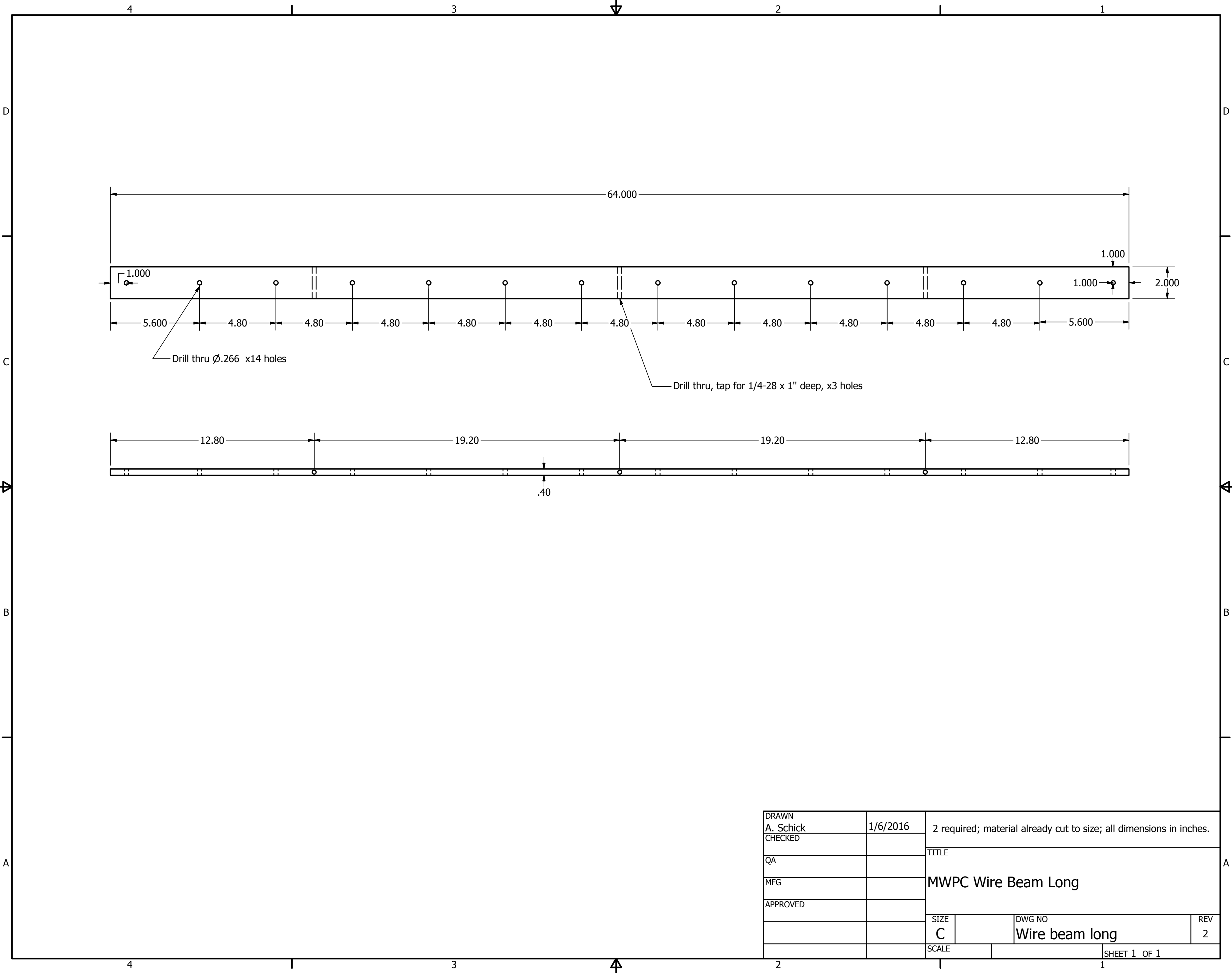
Drill and ream for 5/16 dowel

Drill thru $\varnothing.266$ x12 holes

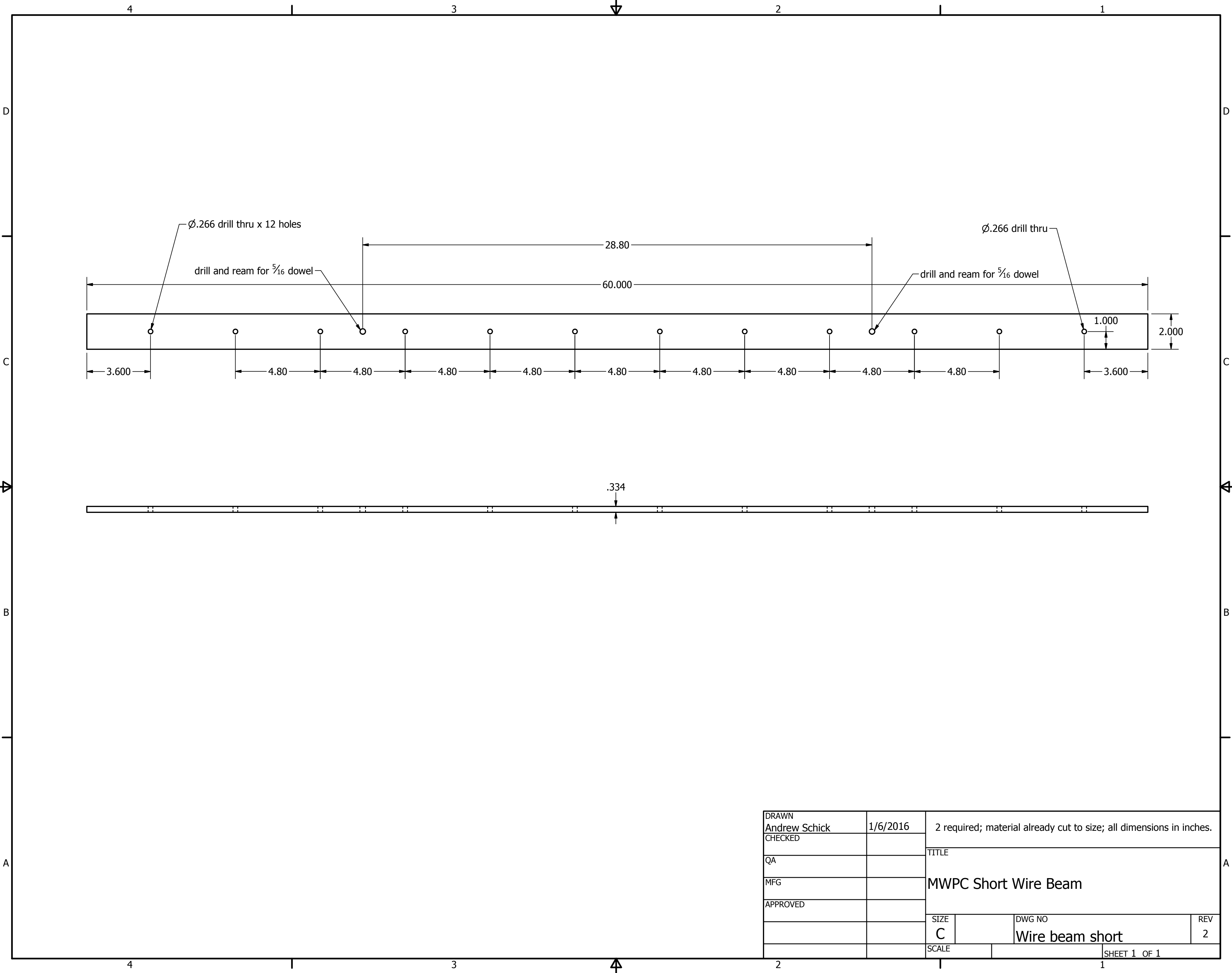
$.094 \pm .005$ wide x $.056 \pm .005$ deep

VIEW A-A
SCALE 2 : 1

DRAWN menp	7/28/2014	2 required; material already cut to size; all dimensions in inches.		
CHECKED		TITLE		
QA		MWPC Short Spacer Beam		
MFG				
APPROVED				
		SIZE C	DWG NO Spacer beam short	REV 2
		SCALE	SHEET 1 OF 1	



DRAWN A. Schick	1/6/2016	2 required; material already cut to size; all dimensions in inches.		
CHECKED		TITLE		
QA		MWPC Wire Beam Long		
MFG				
APPROVED				
		SIZE C	DWG NO Wire beam long	REV 2
		SCALE	SHEET 1 OF 1	



DRAWN Andrew Schick	1/6/2016	2 required; material already cut to size; all dimensions in inches.		
CHECKED		TITLE		
QA		MWPC Short Wire Beam		
MFG				
APPROVED				
		SIZE C	DWG NO Wire beam short	REV 2
		SCALE	SHEET 1 OF 1	