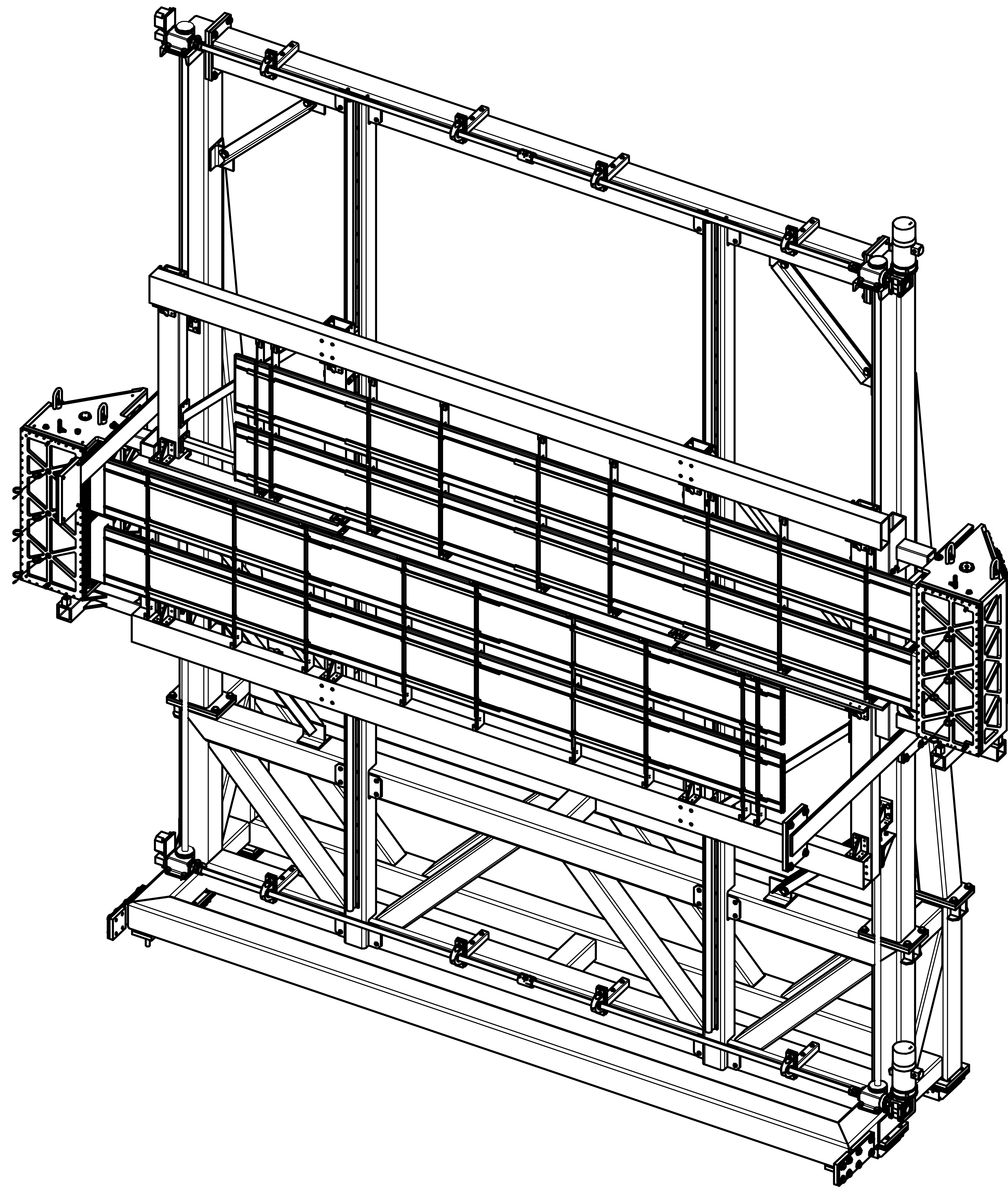


REVISION HISTORY		
ZONE	REV	DESCRIPTION



QTY	ITEM NO	PART OR IDENTIFYING NO	NOMENCLATURE OR DESCRIPTION	MATERIAL SPECIFICATION	NOTES
8	36	McMASTER-CARR 98023A035	FLAT WASHER - 0.656 ID X 1.312 OD	GRADE 8, STEEL	
8	35	McMASTER-CARR 91571A274	HEX BOLT - 0.625-11 UNC X 3.0 LG	STEEL	
4	34	HILTI 00336429	HDI DROP-IN ANCHOR - .750-10UNC	STEEL	
8	33	HILTI 00336428	HDI DROP-IN ANCHOR - 0.625-11 UNC	STEEL	
4	32	McMASTER-CARR 90322A193	THREADED ROD .75-10 X 24.0 LG	GRADE 8, STEEL	
4	31	McMASTER-CARR 93839A837	HEX JAM NUT - 0.750-10 UNC	GRADE 8, STEEL	
16	30	McMASTER-CARR 94895A823	HEX NUT - 0.500-13 UNC	GRADE 8, STEEL	
40	29	McMASTER CARR 91571A286	HEX BOLT - 0.750-10 UNC X 1.50 LG	STEEL	
8	28	McMASTER-CARR 91251A741	SHCS - 0.500-13 UNC X 12.0 LG	STEEL	
8	27	McMASTER-CARR 91251A732	SHCS - 0.500-13 UNC X 5.0 LG	STEEL	
32	26	McMASTER-CARR 92865A626	HEX BOLT - 0.375-16 UNC X 1.25 LG	ZINC PLATED STEEL	
16	25	McMASTER-CARR 91104A033	SPLIT LOCK WASHER - 0.512 ID X 0.869 OD	ZINC PLATED STEEL	
40	24	McMASTER-CARR 98023A036	FLAT WASHER - 0.812 ID X 1.469 OD	GRADE 8, STEEL	
32	23	McMASTER-CARR 98023A033	FLAT WASHER - 0.531 ID X 1.062 OD	GRADE 8, STEEL	
32	22	McMASTER-CARR 98023A031	FLAT WASHER - 0.406 ID X 0.812 OD	GRADE 8, STEEL	
1	21	D00000-01-08-2018	UPPER MIRROR BOX SUPPORT FRAME ASSEMBLY		
1	20	D00000-01-08-2017	BOTTOM MIRROR BOX SUPPORT FRAME ASSEMBLY		
1	19	D00000-01-08-2001	BAR BOX BOTTOM FRAME		
1	18	D00000-01-08-2003	BAR BOX TOP FRAME		
4	17	D00000-01-08-1037	MIRROR BOX FRAME SPACE BLOCK		
8	16	D00000-01-08-1026	LONG BEARING BASE PLATE		
4	15	D00000-01-08-1001	ACME NUT BRACKET SPACER PLATE		
4	14	D00000-05-01-2109	DIRC - WASHER PLATE		
1	13	D00000-05-01-2108	DIRC - HOLD DOWN BEAM		
2	12	D00000-05-01-2107	DIRC - FCAL BRACE WELD PLATE		3
2	11	D00000-05-01-2106	DIRC - ANCHOR PLATE		3
2	10	D00000-05-01-2105	DIRC-FCAL BRACE WELDMENT		
2	9	D00000-05-01-2104	DIRC - FLOOR ANCHOR		
2	8	D00000-05-01-2103	DIRC - TETHER STRAP		
2	7	D00000-05-01-2102	DIRC - TETHER WELD PLATE		3
8	6	D00000-05-01-2101	DIRC - SAFETY STRAP SPACER		
4	5	D00000-05-01-2100	DIRC - SAFETY STRAP		
1	4	D00000-01-08-2101	GLUEX FOB LH ASSEMBLY		
1	3	D00000-01-08-2100	GLUEX FOB RH ASSEMBLY		
2	2	D00000-05-01-1048	DIRC - CABLING ASSEMBLY		
1	1	D00000-05-01-1040	DIRC STRUCTURE ASSEMBLY		

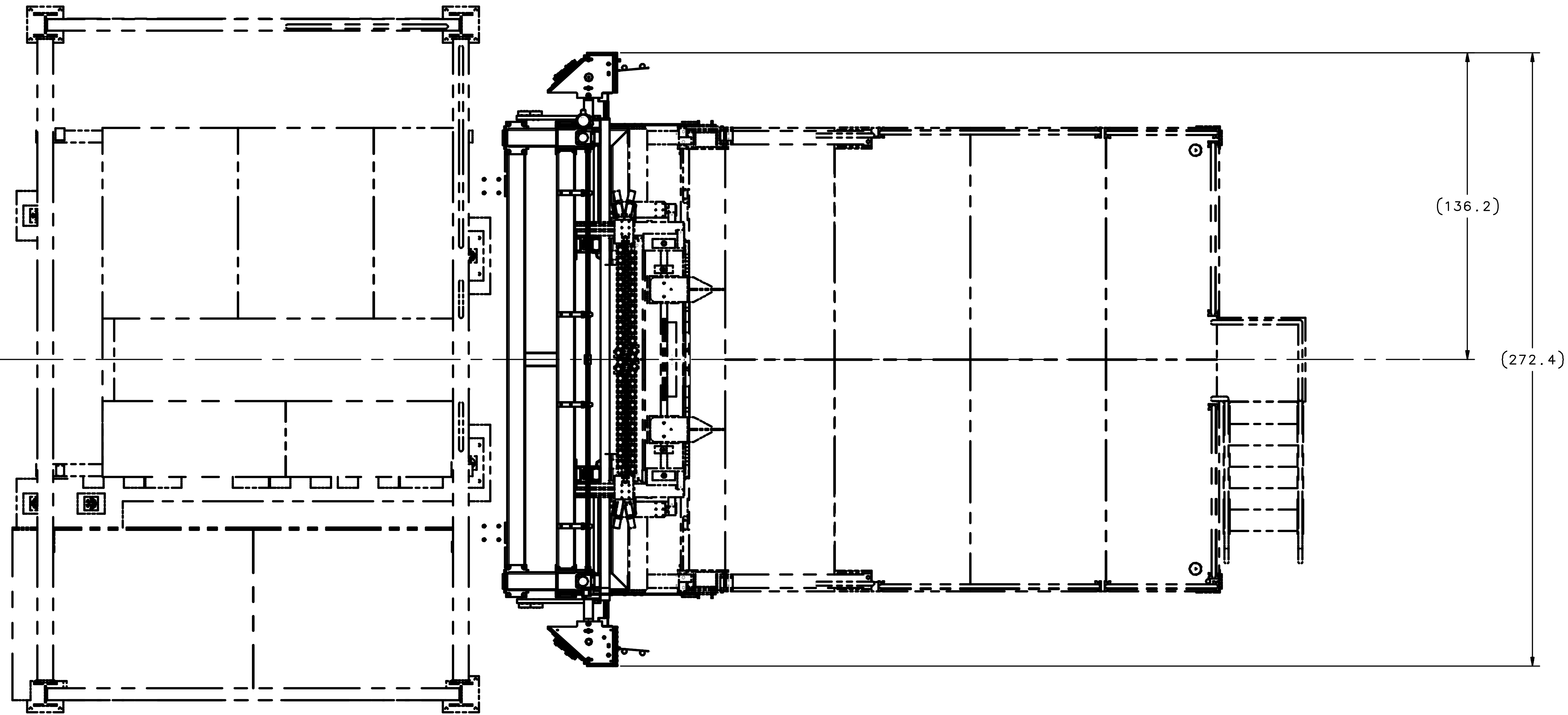
NOTES:

- SUGGESTED SOURCE OR JLAB APPROVED ALTERNATE: McMASTER-CARR (609)223-4200 - WWW.MCMASTER.COM
- SEE PROCEDURE D00000-01-08-P000 FOR INSTALLATION INSTRUCTIONS.
- ITEMS 7, 11 & 12 ARE TO BE FIELD WELDED DURING INSTALLATION IN HALL D.
- ALL WELDING SHALL BE IN ACCORDANCE WITH AWS D1.1 . ALL WELDS REQUIRE 100* VISUAL EXAMINATION IN ACCORDANCE WITH AWS D1.1 . BOTH WELDER AND EXAMINER ARE TO BE QUALIFIED PER AWS OR ASME STANDARDS.
- ANYWHERE PAINT WAS REMOVED FOR WELDING OF ITEMS 7, 11 & 12 DESCALE, SOLVENT WIPE & PRIME WITH ONE COAT OF PRIMER PER MANUFACTURER'S INSTRUCTIONS & SPECIFICATIONS. THEN PAINT WITH ONE COAT OF RUST-OLEUM 1644830 (SAFETY YELLOW ENAMEL) PER MANUFACTURER'S INSTRUCTIONS & SPECIFICATIONS.

EACH SHEET OF MULTI-SHEET DRAWINGS SHALL ALWAYS HAVE THE SAME REVISION LEVEL
 DIM & TOL PER ASME Y14.5 2009 UNLESS OTHERWISE SPECIFIED TOLERANCES ARE IN INCHES FRACTIONS DECIMAL ANGLES ± 1/8 XX ± .01 ± 50° XXX ± .005
 FINISH MACHINED SURFACES UNLESS OTHERWISE NOTED DEBURR & BREAK ALL SHARP EDGES
 DO NOT SCALE DRAWING
 DRAWN S. WORTHINGTON DATE 25JUN17
 United States Department of Energy
Jefferson Lab
 Newport News Virginia
 COMPASS Accelerator National Accelerator Facility
 HALL D - GLUEX INSTALLATION EXPERIMENTAL HALL D DIRC INSTALLATION
 SIZE DWG NO D00000-00-00-1019 REV -
 SCALE N/A SHEET 1 OF 4

NORTH

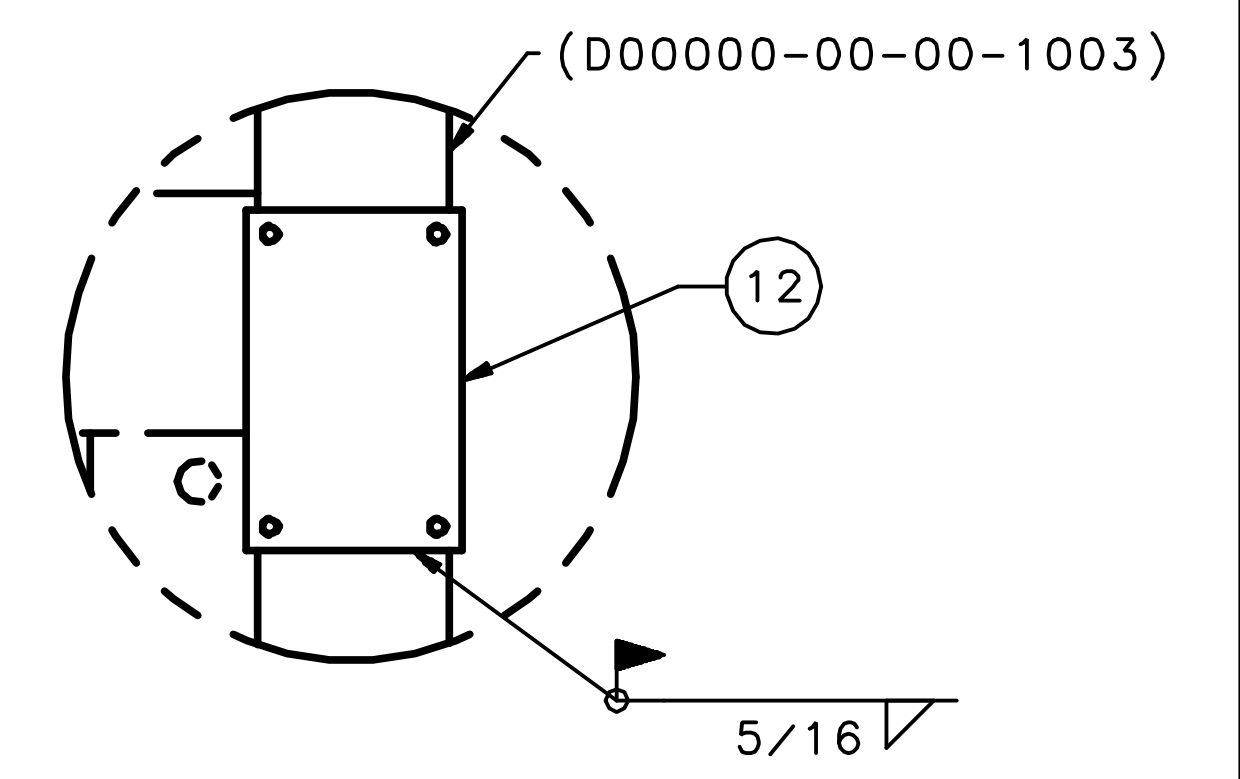
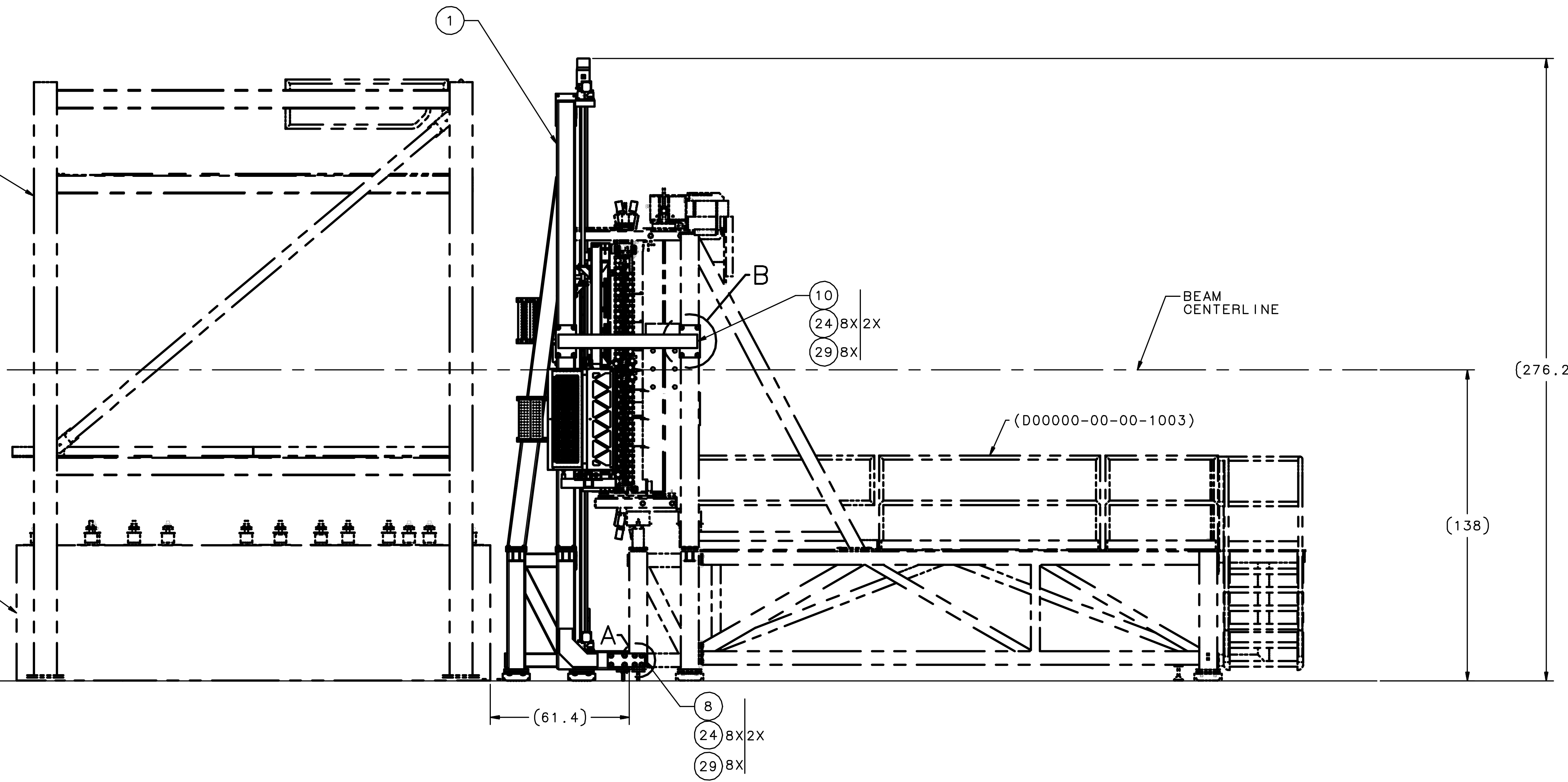
BEAM
DIRECTION



BEAM
DIRECTION

(D00000-05-00-1019)

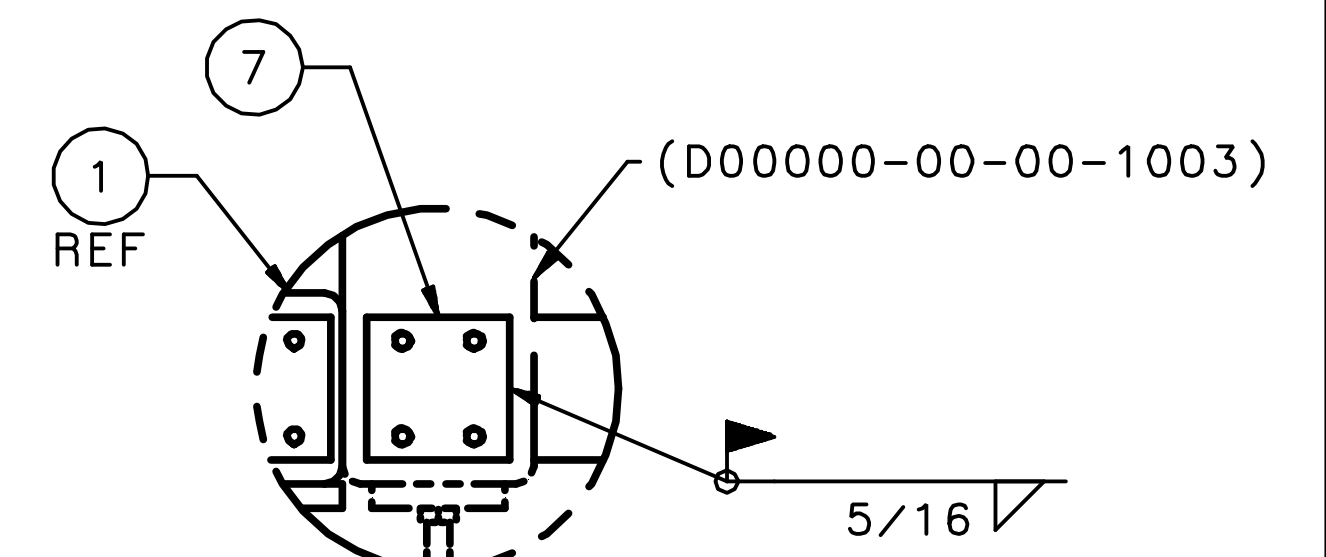
(D00000-14-00-3002)



DETAIL B

SCALE 1:8
TYP 2 PLCS

ITEM 10 HIDDEN FOR CLARITY

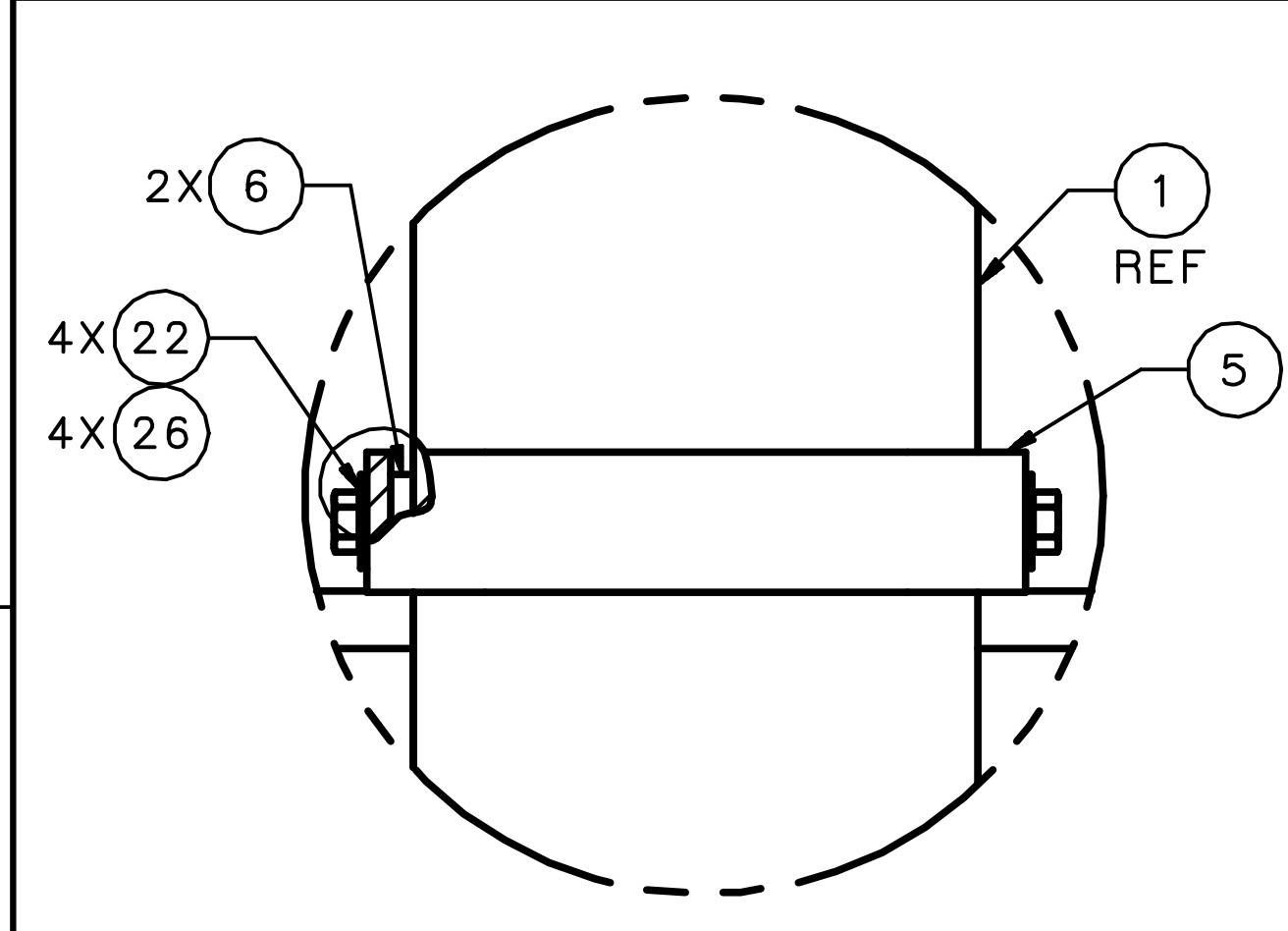


DETAIL A

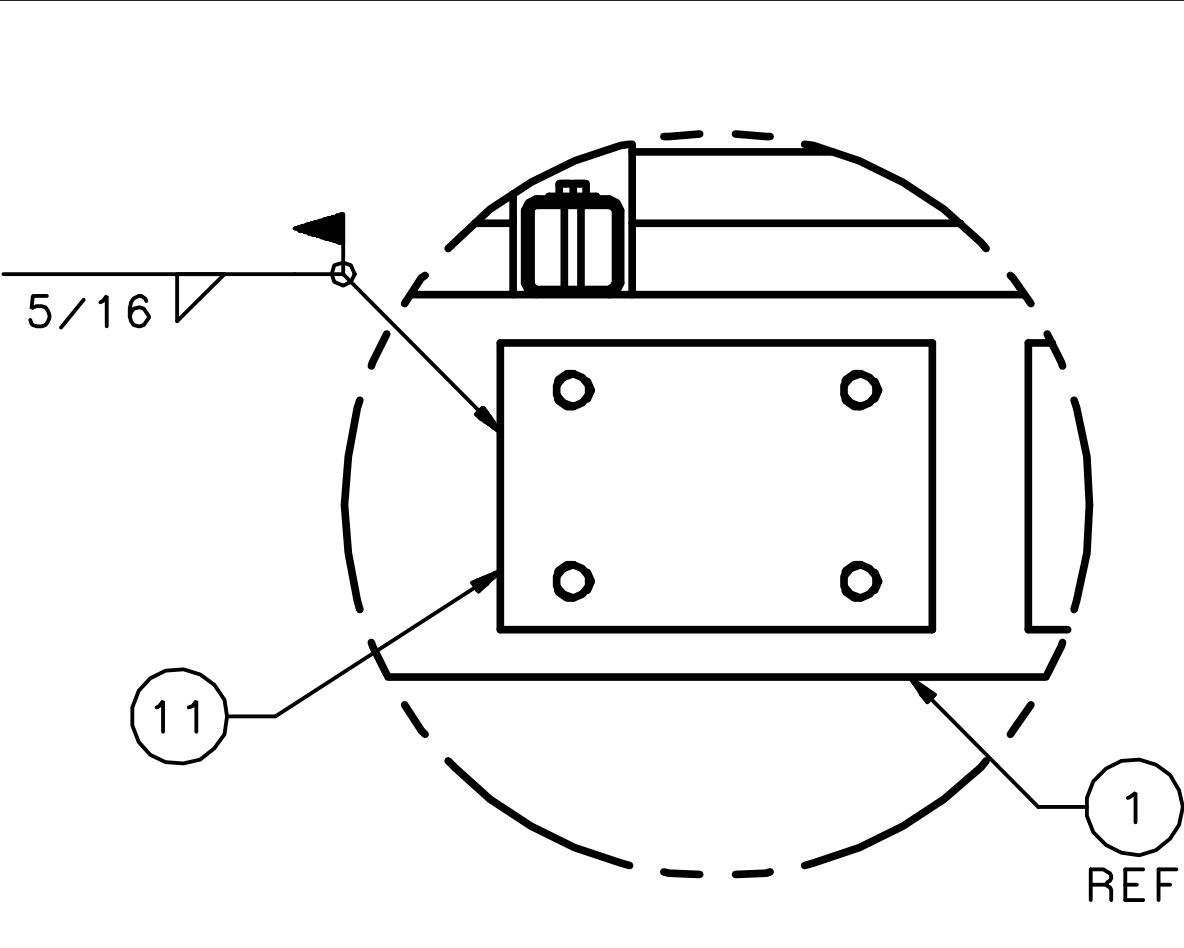
SCALE 1:8
TYP 2 PLCS

ITEM 8 HIDDEN FOR CLARITY

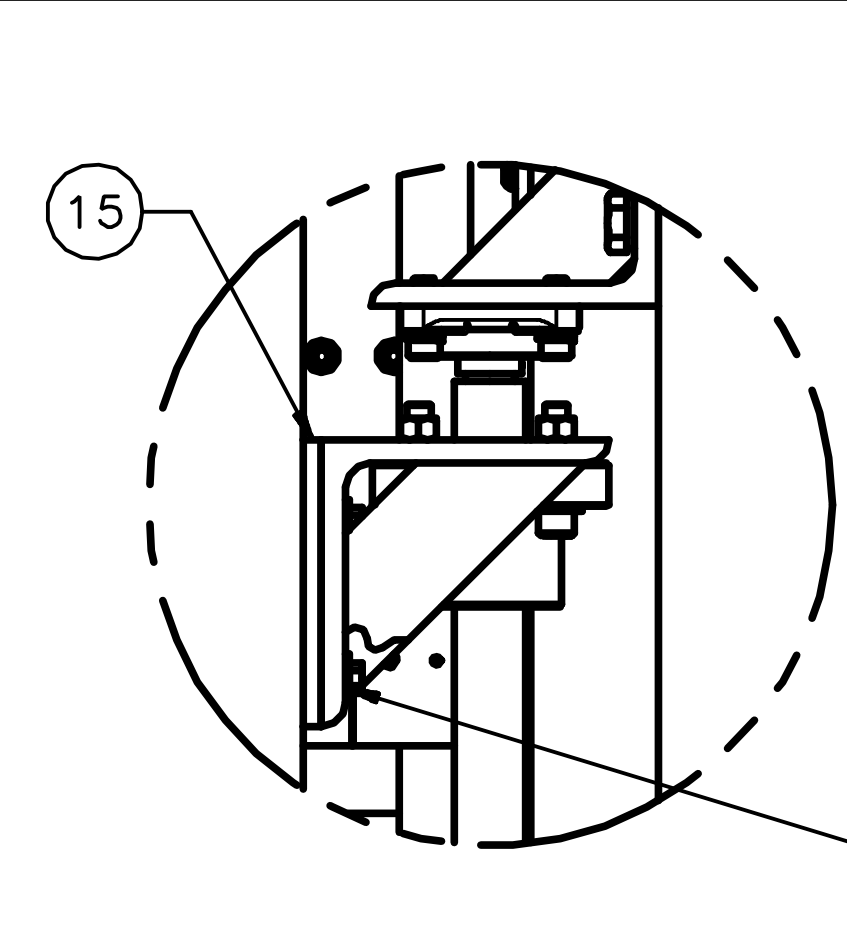
SIZE	DWG NO	REV
E	D00000-00-00-1019	-
SCALE	1:25	REV IN REF NO D00000-00-00-0000 SHEET 2 OF 4



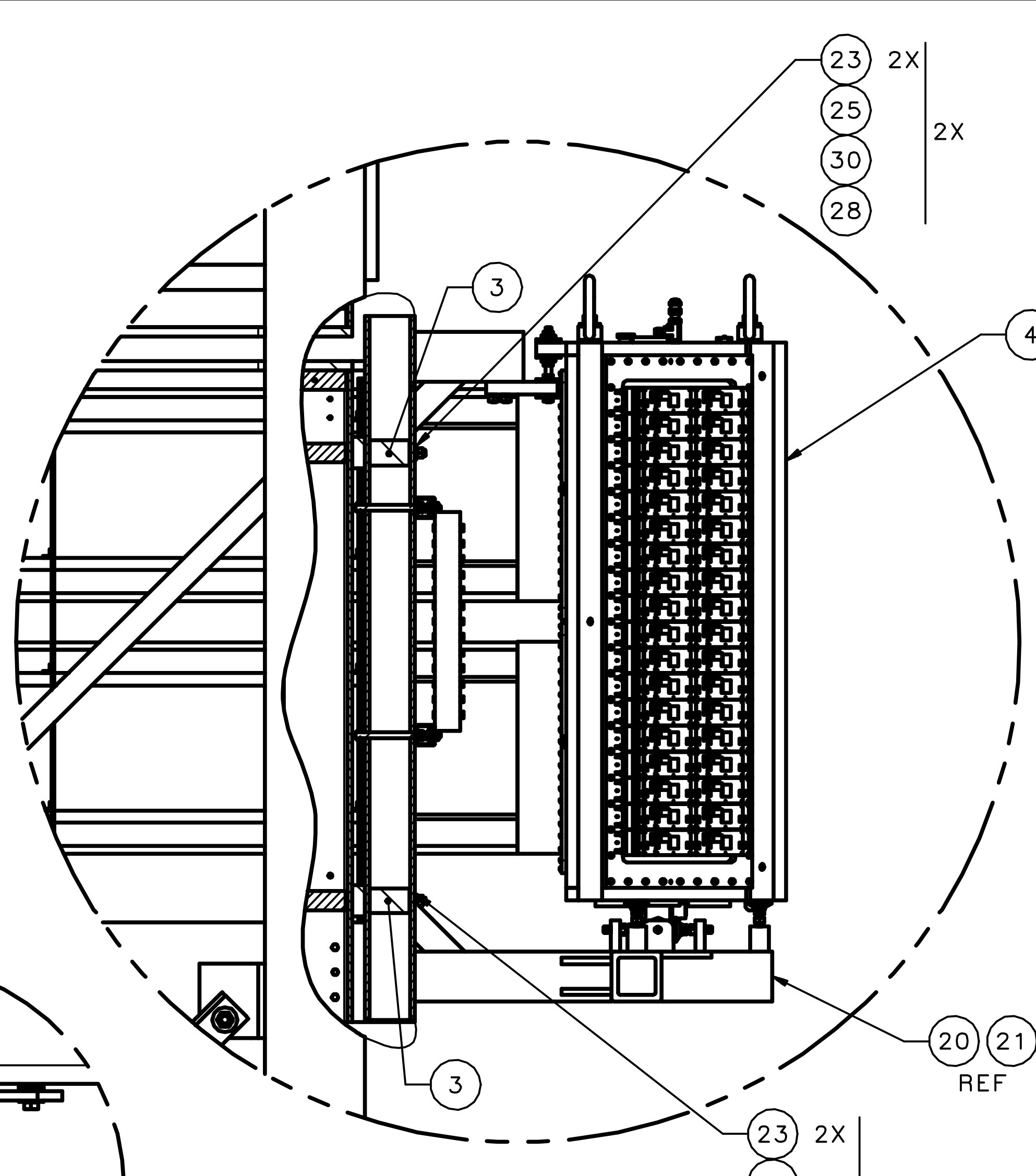
DETAIL C
SCALE 1:2
TYP 4 PLCS



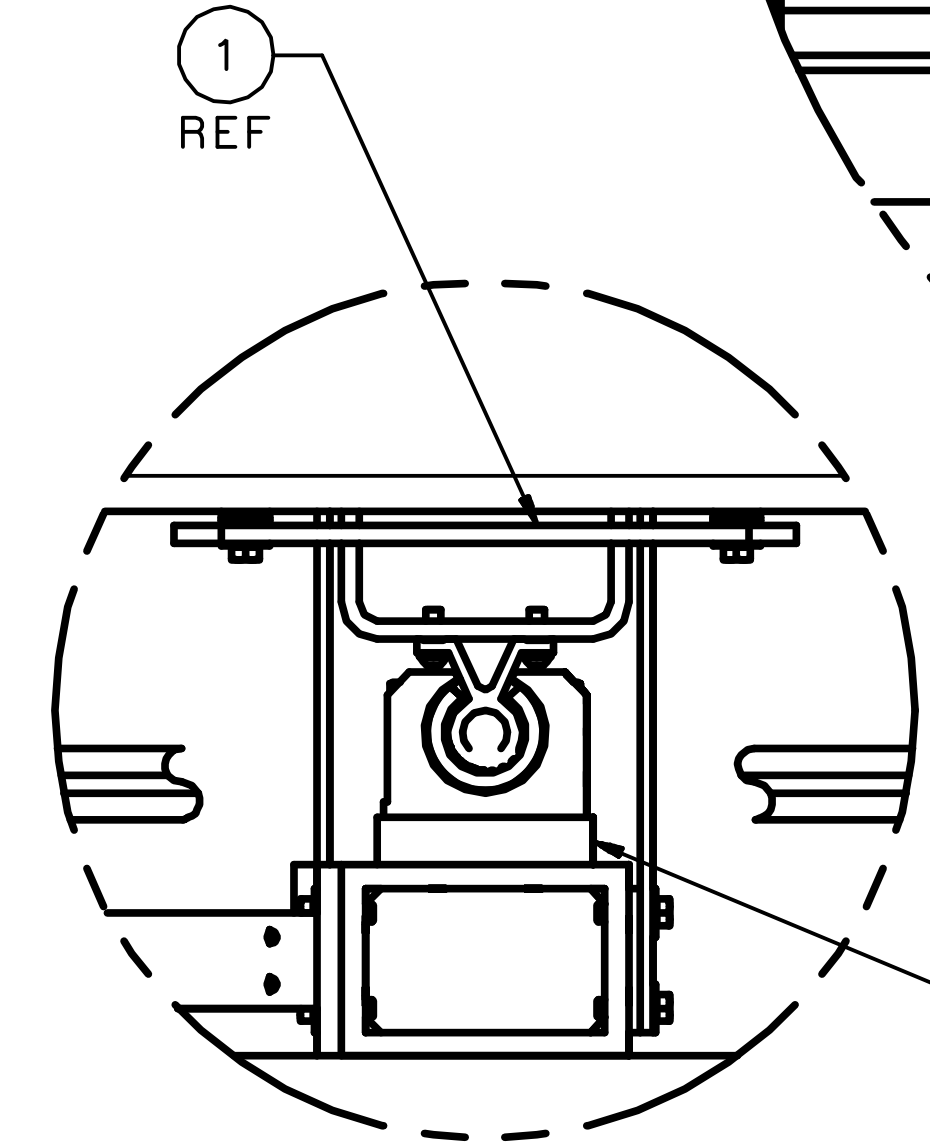
DETAIL E
SCALE 1:4
TYP 2 PLCS
ITEM 9 HIDDEN FOR CLARITY



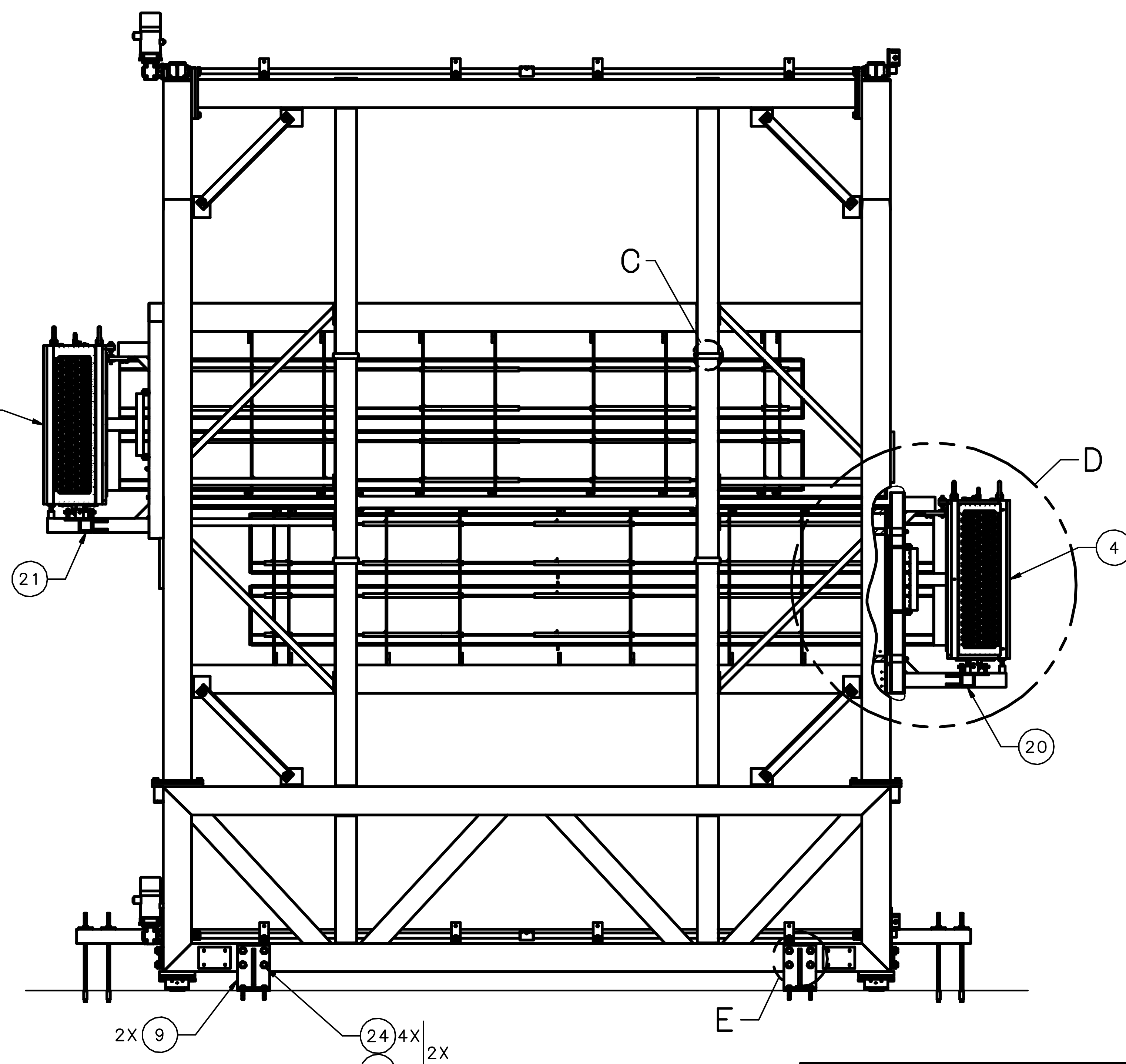
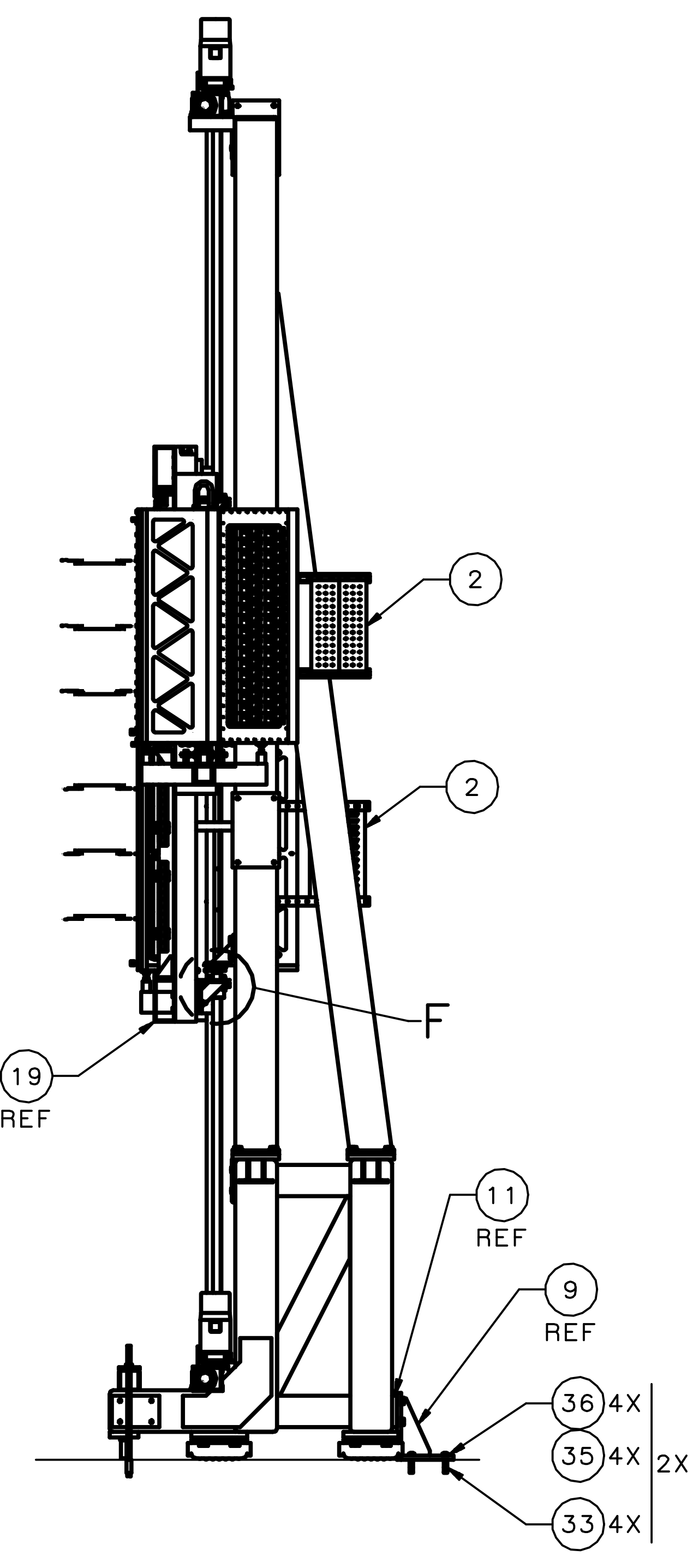
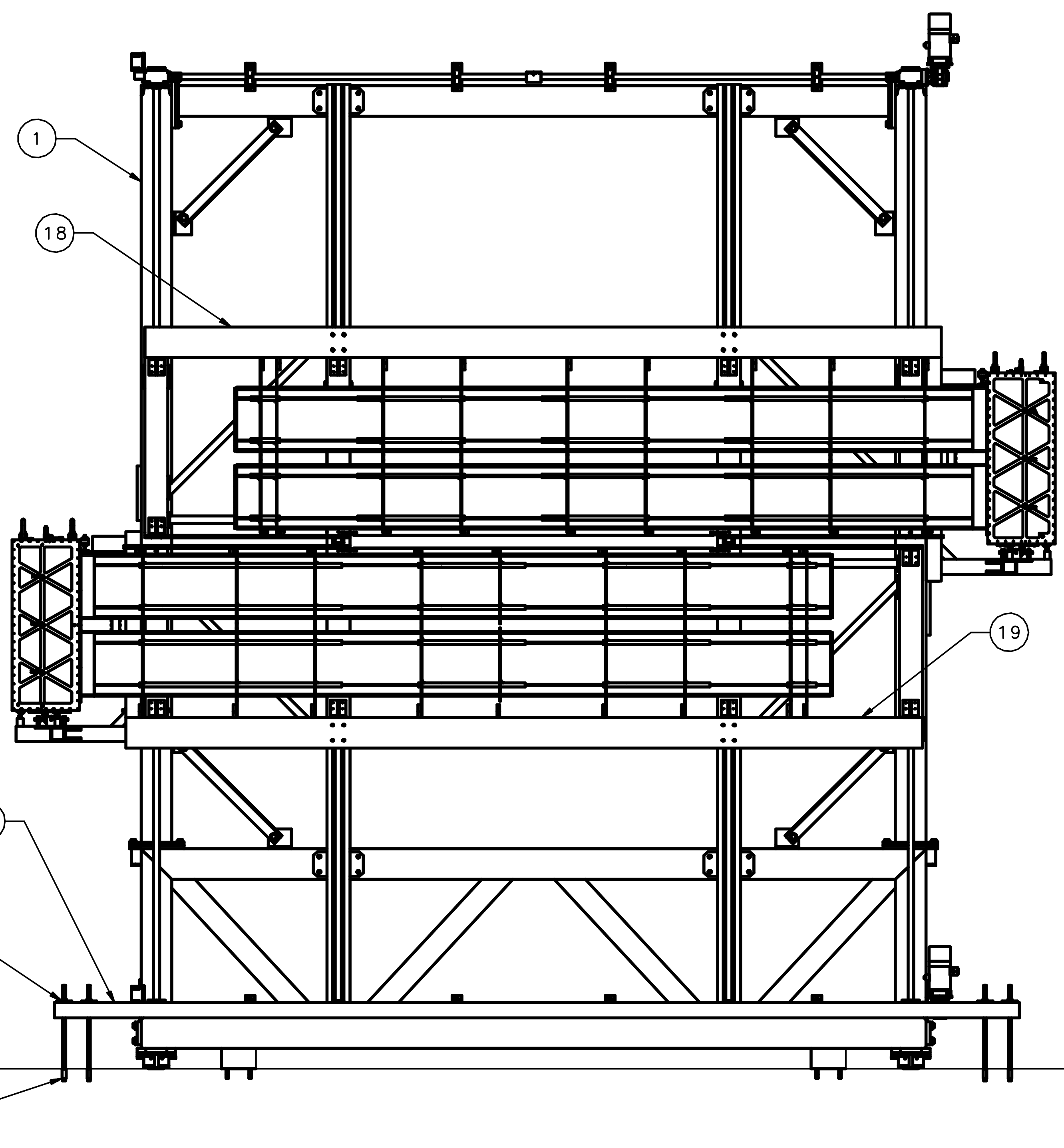
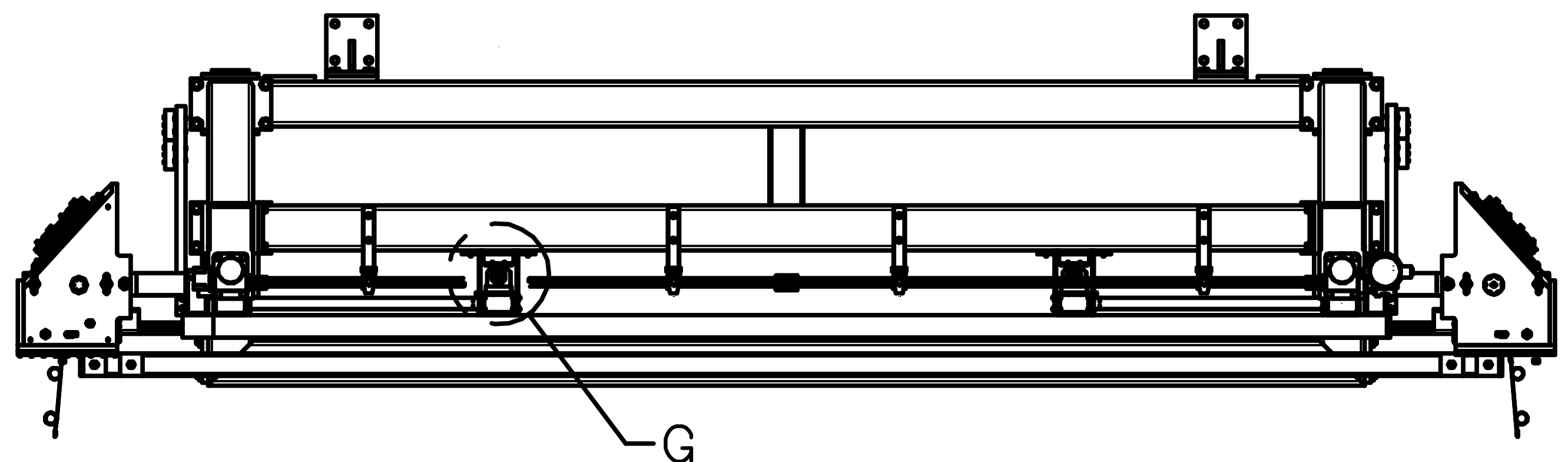
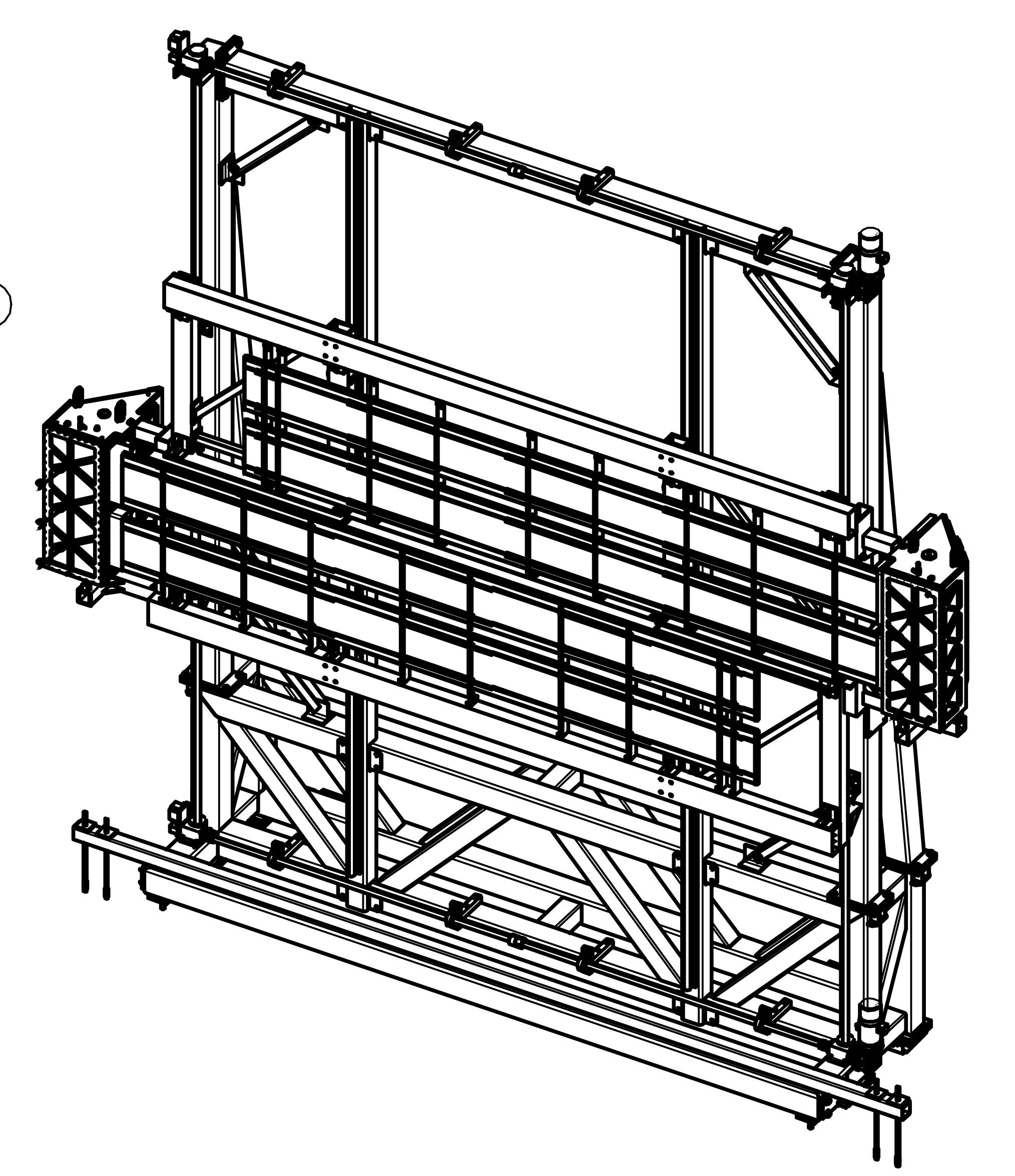
DETAIL F
SCALE 1:4
TYP 4 PLCS



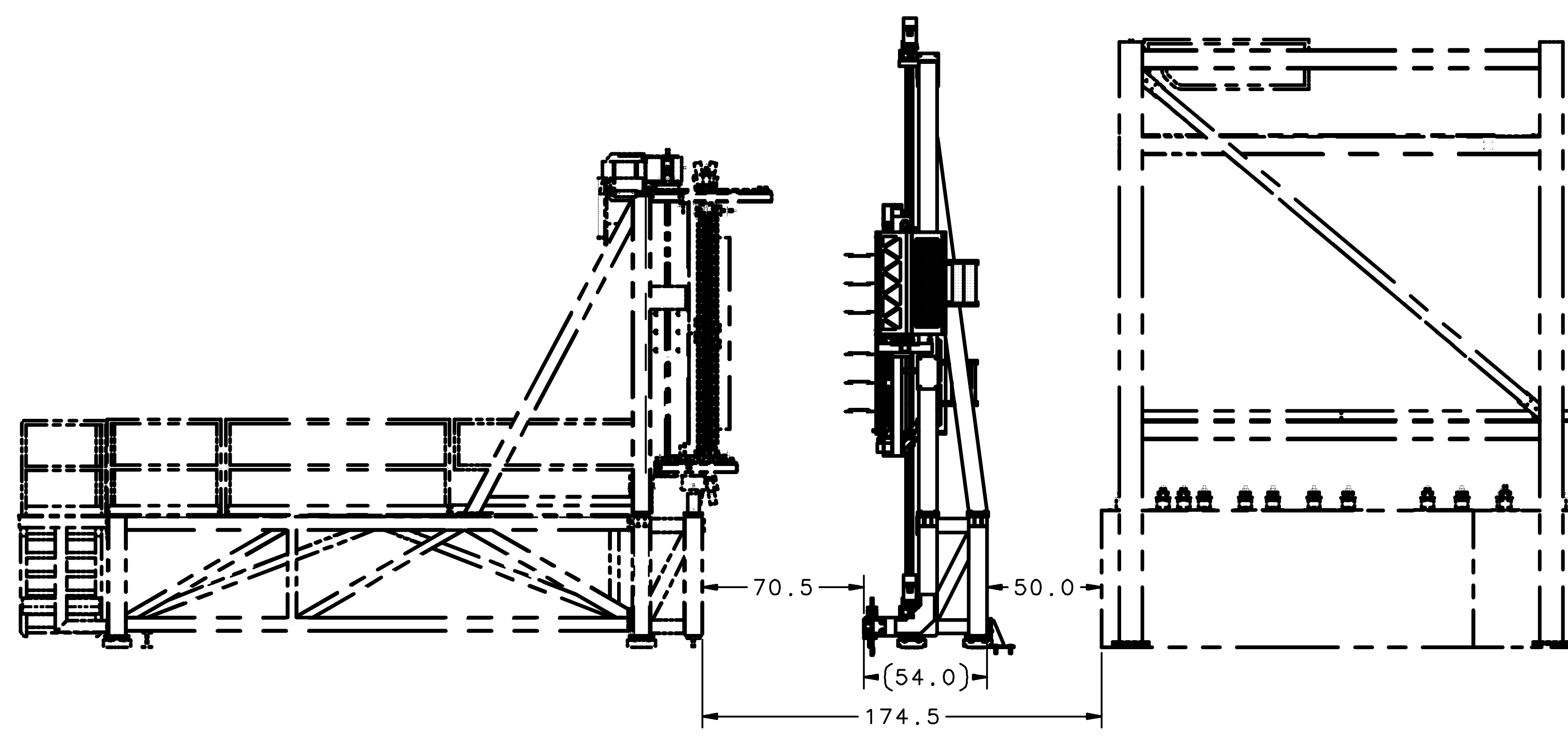
DETAIL D
SCALE 1:8
TYP 2 PLCS



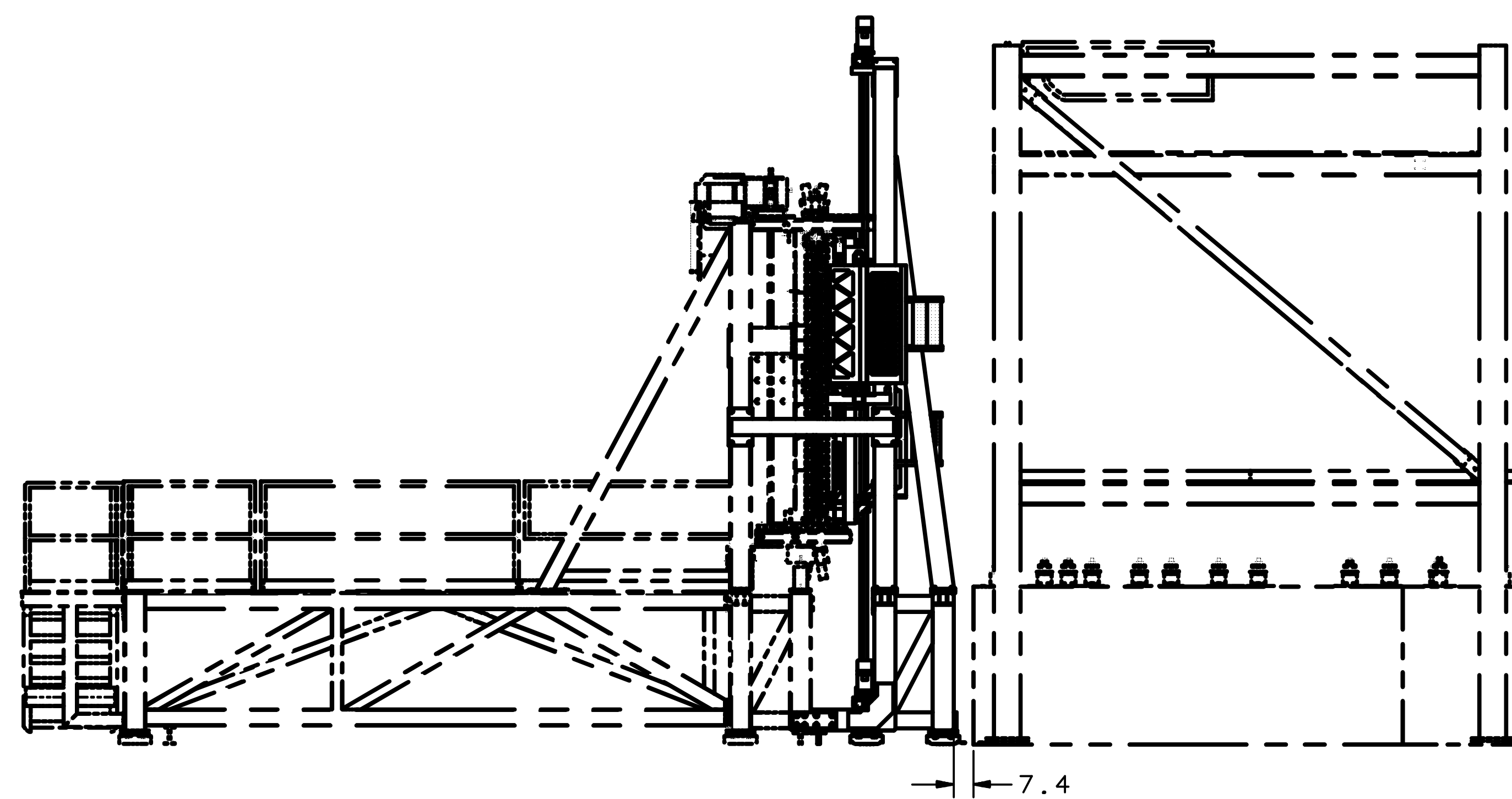
DETAIL G
SCALE 1:4
TYP 8 PLCS



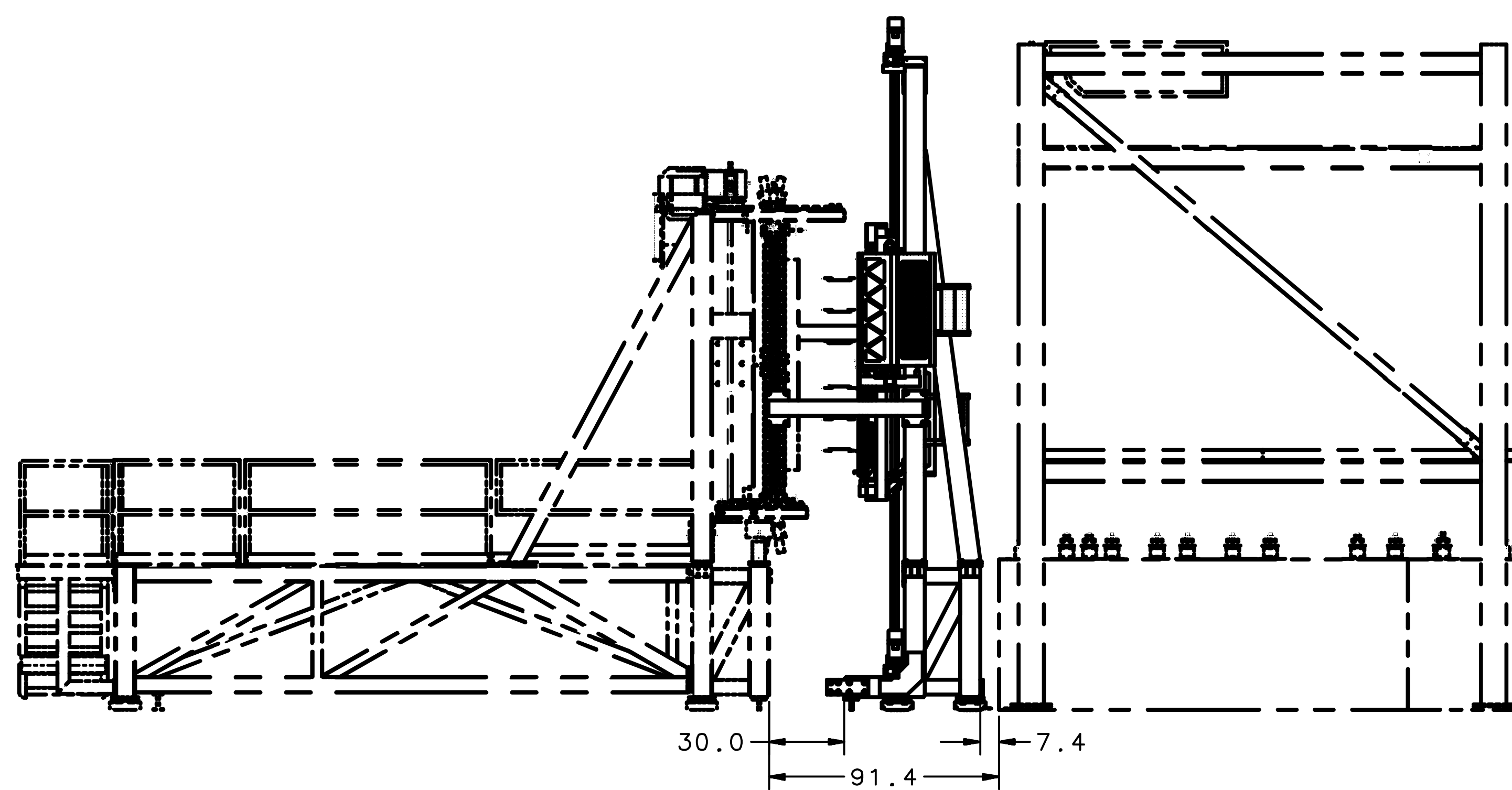
SIZE	DWG NO	REV
E	D00000-00-00-1019	-
SCALE	1:20	SHEET 3 OF 4



DURING INSTALLATION



INSTALLED



DURING POSITION CHANGE

SIZE	DWG. NO.	REV.
E	D00000-00-00-1019	-
SCALE	1:20	SHEET 4 OF 4